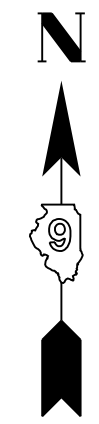


PARCEL 330 FOUNDATION FOR THE FUTURE OF PINCKNEYVILLE

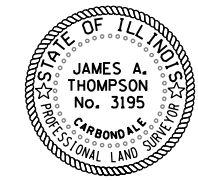
| ROW | TEMP. EASE. | TOTAL AREA OF LOTS 15 & 22 |
|-----------|-------------|----------------------------|
| 0.007 ac± | 0.010 ac± | 0.453 ac± |

COORDINATES

| | | |
|----------|-------------|--------------|
| PT JT1 | N 515962.05 | E 2522495.57 |
| PT JT2 | N 515962.14 | E 2522489.92 |
| PT JT3 | N 515890.74 | E 2522494.85 |
| PT JT4 | N 515872.61 | E 2522514.88 |
| PT JT5 | N 515896.53 | E 2522488.45 |
| PT MF267 | N 515873.22 | E 2522487.92 |



Scale: 1" = 20 feet



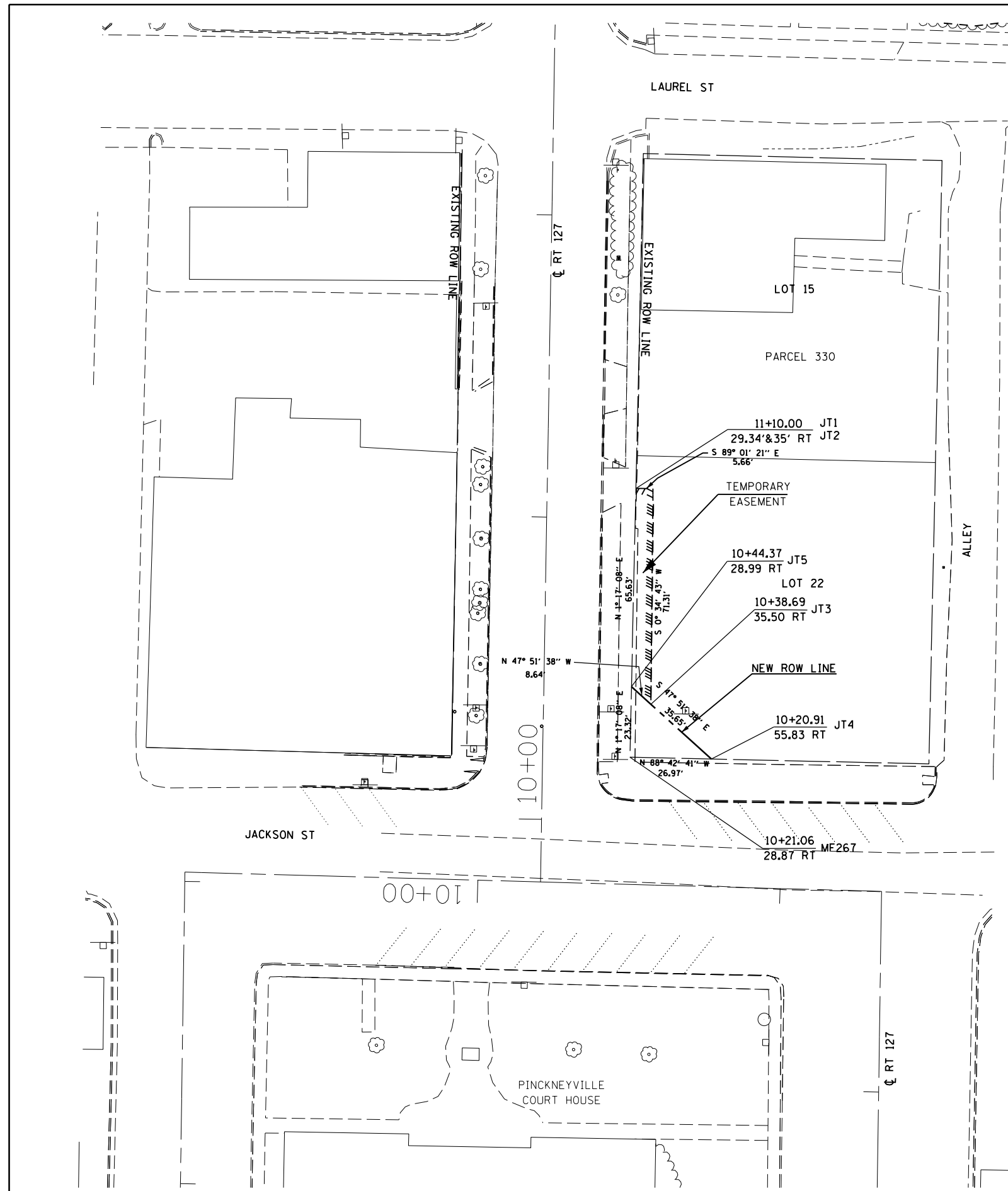
JAMES A. THOMPSON ILLINOIS PROFESSIONAL LAND SURVEYOR NO. 3195

Current license expires 11/2012.

This professional service conforms to the current Illinois minimum standards for a boundary survey.

SURVEYOR'S NOTES

- Survey information for Lots 15 and 22 was taken from a survey performed by Larry Moore, surveyor No. 2134, for The Foundation for the Future of Pinckneyville, Illinois, in February, 2012.



| | | | |
|--|-----------------------------|------------|-----------|
| FILE NAME = | USER NAME = pufferaa | DESIGNED - | REVISED - |
| ct:\pw\work\puidot\pufferaa\10310837\78324-shf-row.dgn | | DRAWN - | REVISED - |
| Default | PLOT SCALE = 40.0000' / in. | CHECKED - | REVISED - |
| | PLOT DATE = 2/5/2013 | DATE - | REVISED - |

STATE OF ILLINOIS
DEPARTMENT OF TRANSPORTATION

| ROW SHEET | |
|---------------|--|
| SCALE: 20'=1" | SHEET 1 OF 1 SHEETS STA. 10+00 TO STA. 12+00 |

| F.A.P. RTE. | SECTION | COUNTY | TOTAL SHEETS | SHEET NO. |
|---------------------------|---------|--------|--------------|-----------|
| 42 | 8(N-1) | PERRY | 26 | 12 |
| CONTRACT NO. 78324 | | | | |
| ILLINOIS FED. AID PROJECT | | | | |