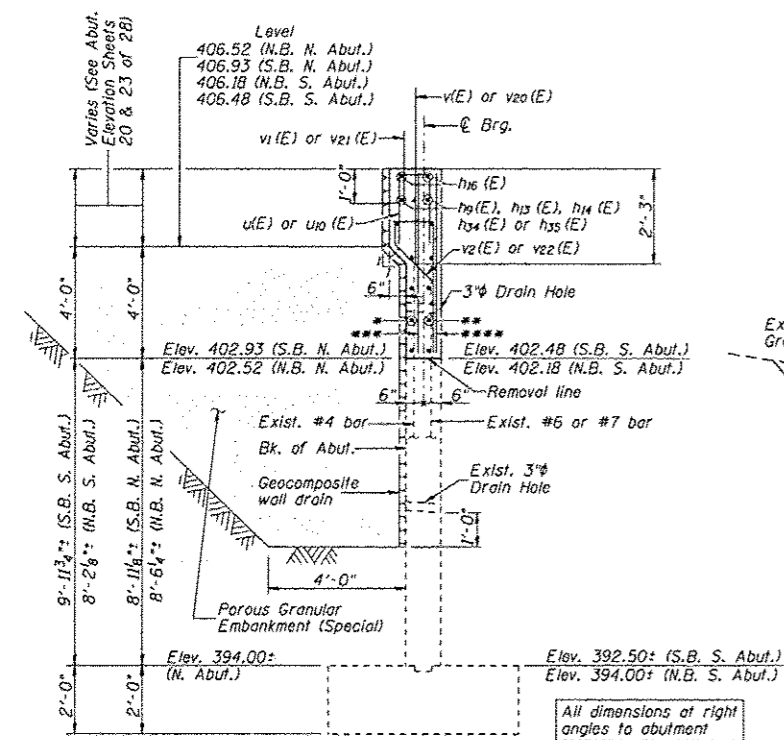
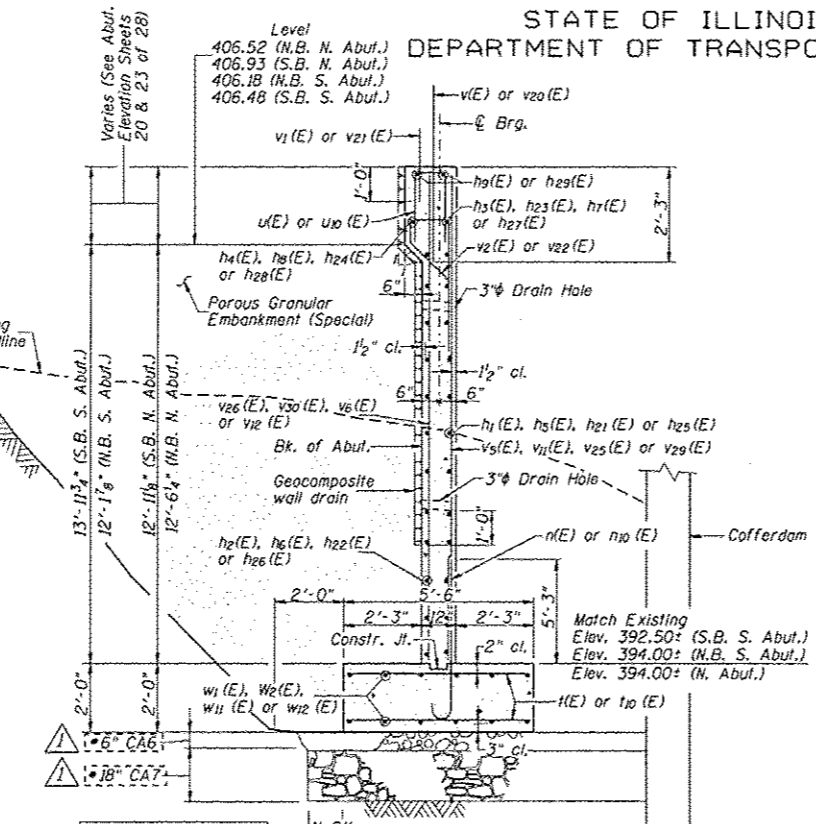


STATE OF ILLINOIS  
DEPARTMENT OF TRANSPORTATION



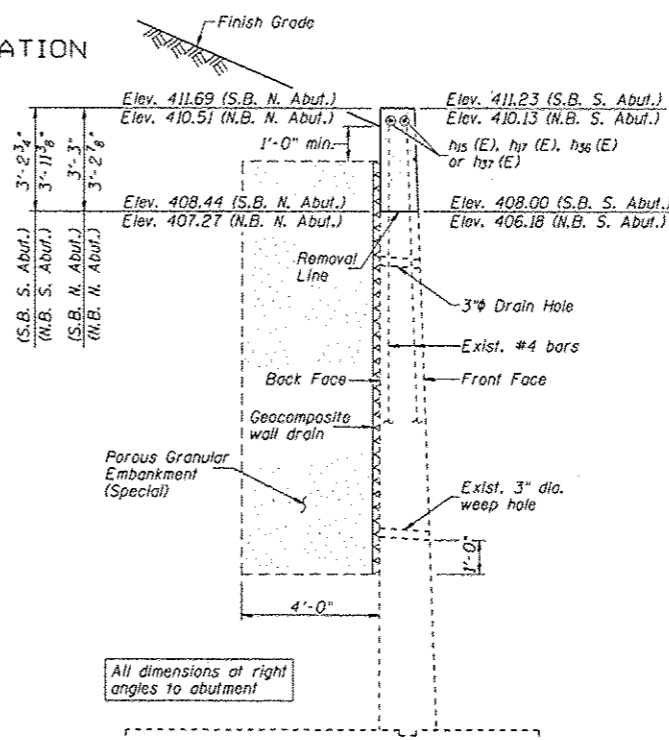
SECTION A-A

\* h24(E), h28(E), h34(E) h4(E), h8(E) or h13(E)  
 \*\* h5(E), h12(E), h7(E) h23(E), h27(E) or h33(E)  
 \*\*\* v4(E), v10(E), v24(E) or v32(E)  
 \*\*\*\* v5(E), v9(E), v25(E) or v31(E)



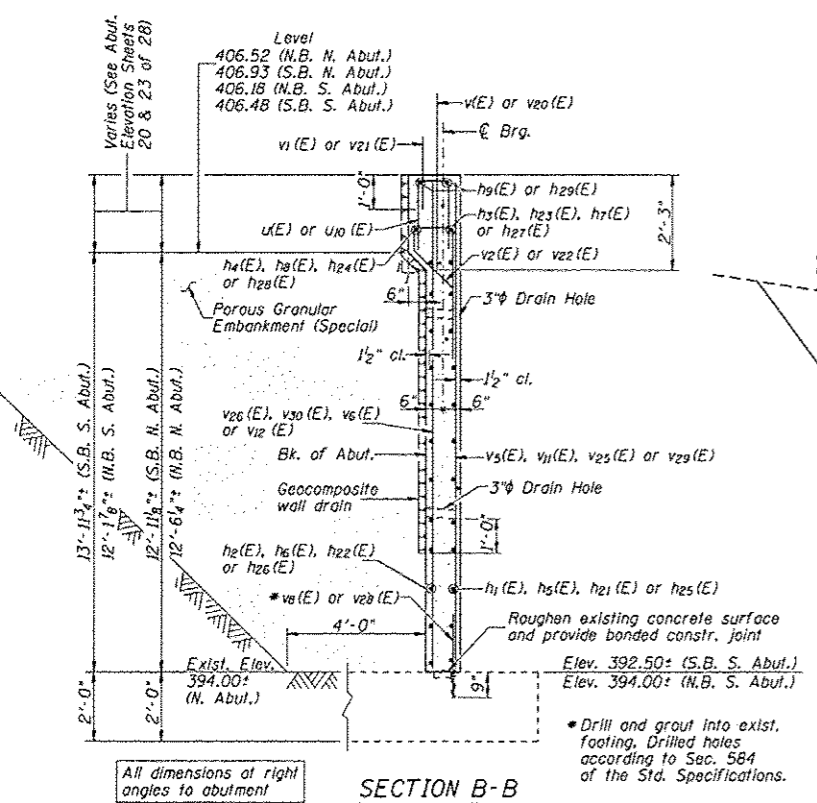
SECTION C-C

\*CAG & CA7 SHALL BE PAID FOR AS POROUS GRANULAR EMBANKMENT, SPECIAL



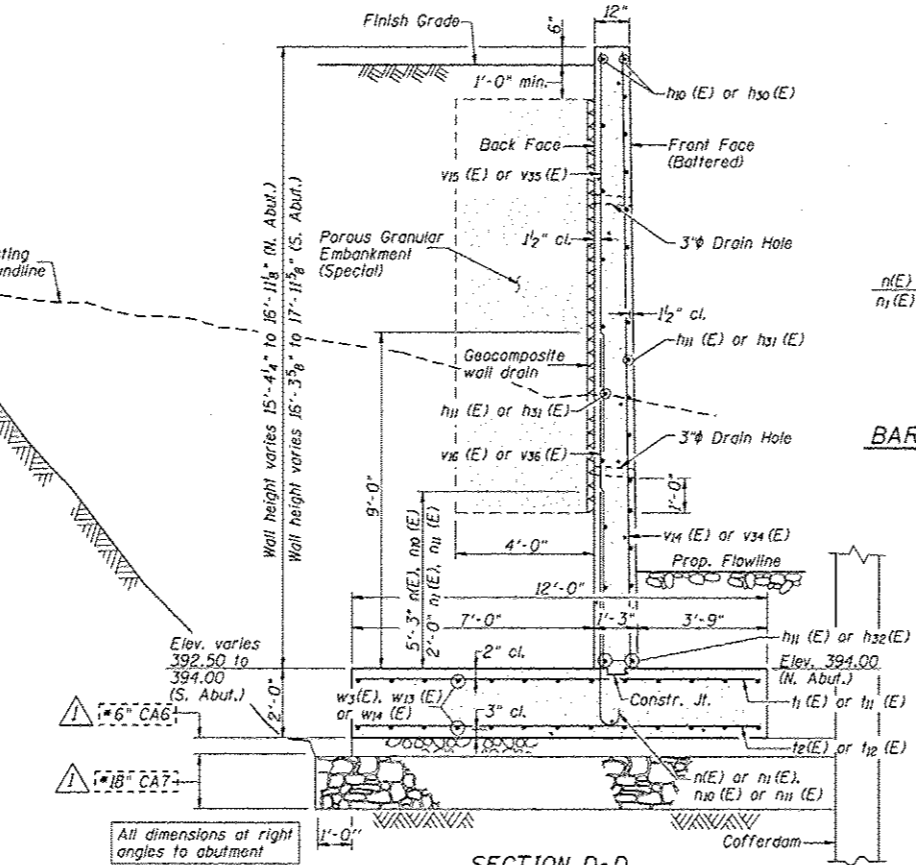
SECTION E-E

All dimensions at right angles to abutment



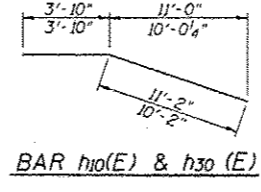
SECTION B-B

\* Drill and grout into exist. footing. Drilled holes according to Sec. 584 of the Std. Specifications.

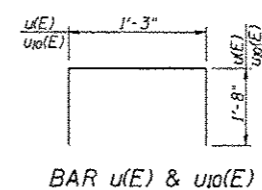


SECTION D-D

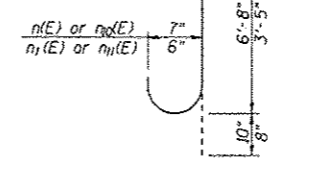
\*CAG & CA7 SHALL BE PAID FOR AS POROUS GRANULAR EMBANKMENT, SPECIAL



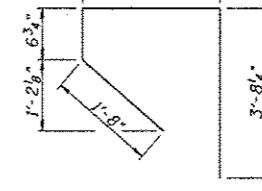
BAR h10(E) & h30(E)



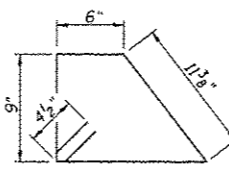
BAR u(E) & u10(E)



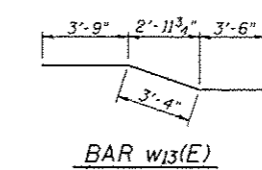
BAR n(E), n1(E), n10(E) & n11(E)



BAR v2(E) & v22(E)



BAR s(E) & s10(E)



BAR w13(E)

NORTH ABUTMENT BILL OF MATERIAL				SOUTH ABUTMENT BILL OF MATERIAL					
Bar	No.	Size	Length	Shape	Bar	No.	Size	Length	Shape
h (E)	18	6	4'-0"		h20(E)	18	6	4'-0"	
h1(E)	9	6	24'-7"		h21(E)	8	6	24'-5"	
h2(E)	9	4	24'-7"		h22(E)	8	4	24'-5"	
h3(E)	5	6	39'-7"		h23(E)	5	6	38'-1"	
h4(E)	5	4	39'-7"		h24(E)	5	4	38'-1"	
h5(E)	9	6	24'-5"		h25(E)	10	6	24'-7"	
h6(E)	9	4	24'-5"		h26(E)	10	4	24'-7"	
h7(E)	5	6	38'-1"		h27(E)	5	6	39'-1"	
h8(E)	5	4	38'-1"		h28(E)	5	4	39'-1"	
h9(E)	2	4	17'-3"		h29(E)	2	4	18'-0"	
h10(E)	4	4	15'-0"		h30(E)	4	4	14'-0"	
h11(E)	25	4	33'-8"		h31(E)	23	4	33'-8"	
h12(E)	10	6	42'-1"		h32(E)	3	4	26'-8"	
h13(E)	10	4	42'-1"		h33(E)	5	6	43'-7"	
h14(E)	2	4	21'-10"		h34(E)	5	4	43'-7"	
h15(E)	6	4	7'-9"		h35(E)	2	4	22'-8"	
h16(E)	2	4	30'-1"		h36(E)	6	4	25'-9"	
h17(E)	6	4	16'-8"		h37(E)	6	4	8'-7"	
h18(E)	16	5	6'-0"		h38(E)	5	6	42'-5"	
h19(E)	7	4	42'-5"		h39(E)	7	4	42'-5"	
n (E)	95	7	7'-6"		n10(E)	95	7	7'-6"	
n1(E)	40	6	4'-1"		n11(E)	40	6	4'-1"	
s (E)	8	3	4'-1"		s10(E)	8	3	4'-1"	
u (E)	84	5	5'-2"		u10(E)	82	5	5'-2"	
u1(E)	41	8	11'-8"		u11(E)	41	8	11'-8"	
u2(E)	41	6	11'-8"		u12(E)	41	6	11'-8"	
u3(E)	2	5	11'-8"		u13(E)	2	5	11'-8"	
v (E)	128	4	4'-9"		v10(E)	138	4	4'-9"	
v1(E)	161	5	4'-6"		v20(E)	161	5	4'-6"	
v2(E)	161	5	2'-0"		v21(E)	161	5	2'-0"	
v3(E)	255	6	7'-2"		v22(E)	262	6	7'-2"	
v4(E)	86	7	4'-6"		v23(E)	87	7	4'-5"	
v5(E)	22	4	4'-6"		v24(E)	22	4	4'-5"	
v6(E)	36	7	13'-2"		v25(E)	38	7	12'-9"	
v7(E)	13	4	13'-2"		v26(E)	14	4	12'-9"	
v8(E)	3	7	16'-5"		v27(E)	3	7	16'-0"	
v9(E)	23	7	6'-1"		v28(E)	3	7	16'-0"	
v10(E)	91	7	5'-1"		v29(E)	25	7	6'-1"	
v11(E)	21	4	5'-1"		v30(E)	40	7	14'-5"	
v12(E)	37	7	13'-5"		v31(E)	14	4	14'-5"	
v13(E)	13	4	13'-5"		v32(E)	97	7	5'-3"	
v14(E)	3	7	16'-8"		v33(E)	22	4	5'-3"	
v15(E)	10	4	16'-8"		v34(E)	3	7	17'-8"	
v16(E)	41	4	11'-6"		v35(E)	10	4	17'-8"	
v17(E)	41	6	9'-0"		v36(E)	41	4	12'-6"	
v18(E)	2	7	7'-8"		v37(E)	41	6	9'-0"	
v19(E)	2	7	8'-6"		v38(E)	2	7	8'-6"	
v20(E)	2	7	8'-6"		v39(E)	2	7	8'-6"	
w (E)	12	8	5'-0"		w10(E)	12	8	5'-0"	
w1(E)	12	5	19'-11"		w11(E)	12	5	20'-6"	
w2(E)	12	5	20'-4"		w12(E)	12	5	19'-1"	
w3(E)	26	5	33'-7"		w13(E)	26	5	10'-7"	
w4(E)	26	5	26'-7"		w14(E)	26	5	26'-7"	
Material					Material				
Porous Granular Embankment, Special			Cu. Yd.	2608	Porous Granular Embankment, Special			Cu. Yd.	2877
Concrete Removal			Cu. Yd.	43.2	Concrete Removal			Cu. Yd.	43.8
Structure Excavation			Cu. Yd.	1380	Structure Excavation			Cu. Yd.	1380
Cofferdam Excavation			Cu. Yd.	225	Cofferdam Excavation			Cu. Yd.	225
Cofferdam (Ty. 2)			Each	1	Cofferdam (Ty. 2)			Each	1
Concrete Structures			Cu. Yd.	122.2	Concrete Structures			Cu. Yd.	124.4
Reinforcement Bars			Pound	19,340	Reinforcement Bars			Pound	19,880
Bar Splicers			Each	22	Bar Splicers			Each	22
Geocomposite Wall Drain			Sq. Yd.	282	Geocomposite Wall Drain			Sq. Yd.	284

ABUTMENT DETAILS  
 F.A.I. RTE. 57 OVER  
 LAKE CREEK BRANCH  
 STATION 228+25.00  
 STRUCTURE NO. 100-0010 (N.B.)  
 STRUCTURE NO. 100-0011 (S.B.)

NOTES:  
 1. Work this sheet with sheets 21, 22, 24 and 25 of 29.

REVISED 4-16-13

**CMT**  
 CRAWFORD MURPHY & TILLY, INC.  
 CONSULTING ENGINEERS  
 SPRINGFIELD, IL ■ AURORA, IL ■ ST. LOUIS, MO  
 ROCKFORD, IL ■ PEORIA, IL ■ CHICAGO, IL

SHEET NO. 26  
 29 SHEETS

F.A.S. RTE.	SECTION	COUNTY	TOTAL SHEETS	SHEET NO.
I-57	(X1-4-1) BR -1	WILLIAMSON	202	109
CONTRACT NO. 78334				
FED. ROAD DIST. NO. 9 ILLINOIS FED. AID PROJECT				