

F.A.I. RTE.	SECTION	COUNTY	TOTAL SHEETS	SHEET NO.
57	(X1-6-2,X1-5,(X1-4-1BR-1))R-1	WILLIAMSON	202	1
		ILLINOIS	CONTRACT NO. 78334	

TRAFFIC DATA

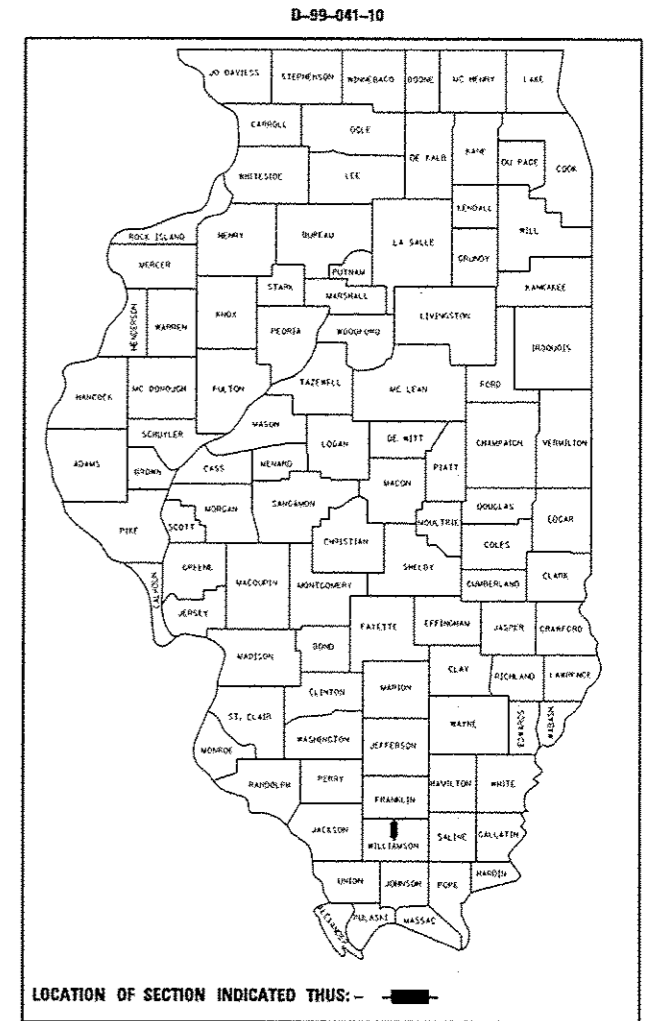
	ADT (2009)	TRUCKS %
I-57 (SOUTH OF JOHNSTON CITY)	33,700	27.7%
I-57 (NORTH OF JOHNSTON CITY)	33,000	27.7%

STATE OF ILLINOIS
DEPARTMENT OF TRANSPORTATION
DIVISION OF HIGHWAYS
PROPOSED
HIGHWAY PLANS

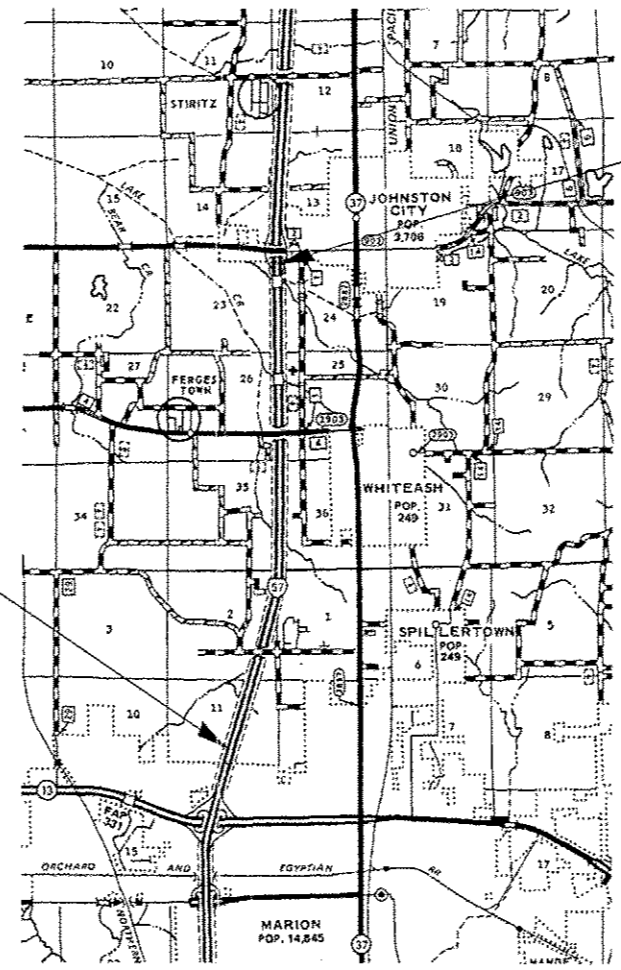
FAI ROUTE 57 (I-57)
SECTION (X1-6-2,X1-5,(X1-4-1BR-1))R-1
PROJECT NHPP-0057(005)
ADD-A-LANE
WILLIAMSON COUNTY

INDEX OF SHEETS

- 1 COVER SHEET
- 2 MIXTURE REQUIREMENTS, LIFT DIAGRAMS, SIGNATURE SHEET & HIGHWAY STANDARDS
- 3 GENERAL NOTES
- 4-8 SUMMARY OF QUANTITIES
- 9-12 TYPICAL SECTIONS
- 13-20 SCHEDULES OF QUANTITIES
- 21-22 ALIGNMENT, TIES, & BENCHMARKS
- 23-41 ROADWAY PLAN & PROFILE/DRAINAGE PROFILE - I-57
- 42 FULL DEPTH ROADWAY PROFILES I-57
- 43-56 CONSTRUCTION STAGING AND MAINTENANCE OF TRAFFIC
- 57-65 EROSION CONTROL PLANS
- 66-75 REMOVAL PLANS
- 76-77 CONSTRUCTION DETAILS
- 78-79 SIGNING PLANS
- 80-83 PAVEMENT MARKING PLANS
- 84-112 STRUCTURE PLANS - I-57 OVER LAKE CREEK BRANCH S.N.100-0010 (NB) & S.N. 100-011 (SB)
- 113-119 DISTRICT DETAILS
- 120-202 CROSS - SECTIONS I-57

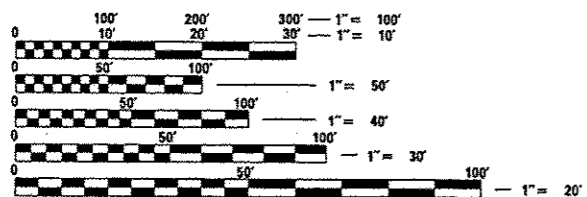


C-99-010-13



PROJECT BEGINS
 STA 166+50 I-57
 SOUTHBOUND LANES
 STA 169+30 I-57
 NORTHBOUND LANES

PROJECT ENDS
 STA 1476+00 I-57
 NORTHBOUND LANES
 STA. 409+51 I-57
 SOUTHBOUND LANES



FULL SIZE PLANS HAVE BEEN PREPARED USING STANDARD ENGINEERING SCALES. REDUCED SIZED PLANS WILL NOT CONFORM TO STANDARD SCALES. IN MAKING MEASUREMENTS ON REDUCED PLANS, THE ABOVE SCALES MAY BE USED.

J.U.L.I.E.
 JOINT UTILITY LOCATION INFORMATION FOR EXCAVATION
 1-800-892-0123
 OR 811

PROJECT ENGINEER DAVID PICHE
PROJECT MANAGER T. WAYNE HALSTEAD

CONTRACT NO. 78334

SOUTHBOUND - GROSS LENGTH = 24,158 FT. = 4.575 MILE
 NET LENGTH = 23,880 FT. = 4.523 MILE
 NORTHBOUND - GROSS LENGTH = 26,400 FT. = 5.000 MILE
 NET LENGTH = 26,127 FT. = 4.948 MILE

EQ. STA 209+50.00 BK = 209+51.50 AH
 EQ. STA 347+05.54 BK = 348+47.10 AH
 EQ. STA 419+77.93 BK = 1461+04.83 AH

Paul J. Krofke
 PROFESSIONAL ENGINEER
 STATE OF ILLINOIS
 062 053622

EXPIRES 11-30-2013

STATE OF ILLINOIS
 DEPARTMENT OF TRANSPORTATION
 DIVISION OF HIGHWAYS

SUBMITTED February 6, 2013
 Deputy Director of Highways, Region Engineer
 March 22, 2013
 John D. Baranzelli PE, Ia
 Engineer of Design and Environment
 March 22, 2013
 Omar Osman PE, Ia
 Director of Highways, Chief Engineer

PRINTED BY THE AUTHORITY
OF THE STATE OF ILLINOIS