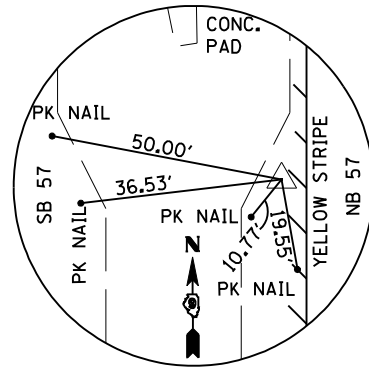
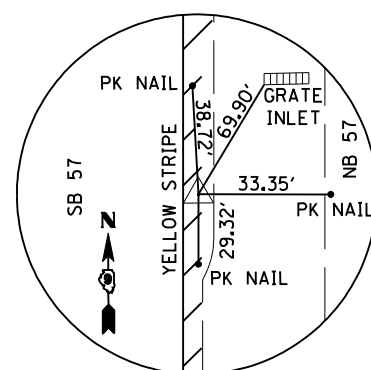


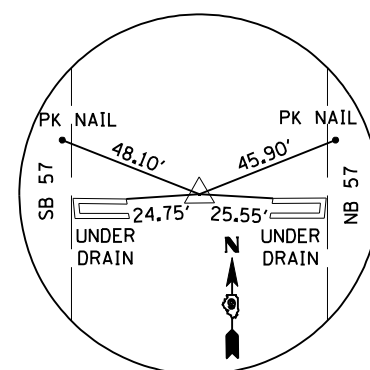
POINT, PC107  
157+36.04 1.61' LT  
IRON ROD/CAP  
N=420147.0373  
E=807289.3208  
Z=401.20



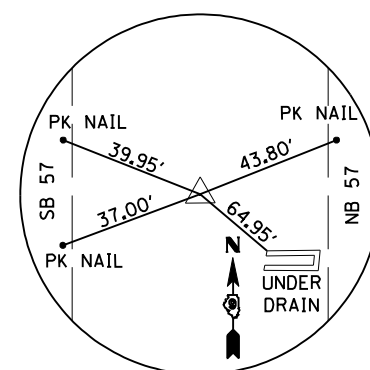
POINT, 2904  
169+38.47 18.92' LT.  
PK NAIL  
N=418944.5638  
E=807302.8574  
Z=402.08



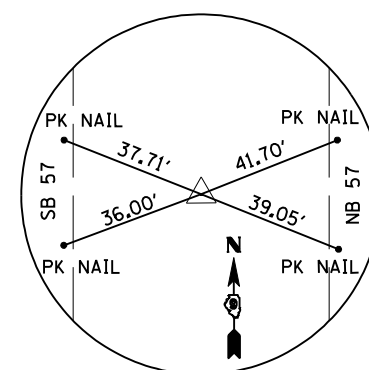
POINT, 2902  
186+25.84 17.05' RT.  
80D NAIL IN ASPHALT  
N=417257.3073  
E=807261.6336  
Z=402.14



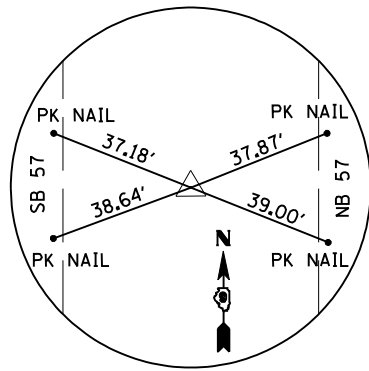
POINT, STA20500  
205+00.00 ON LINE  
R X R SPIKE  
N=415383.1061  
E=807272.8363  
Z=427.16



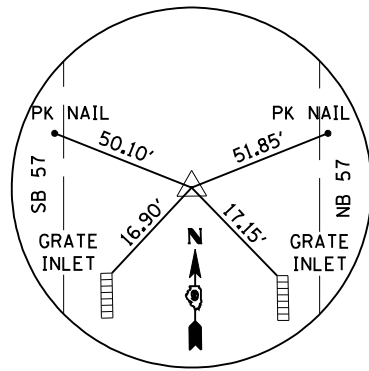
POINT, 2901  
222+92.42 1.58' RT.  
IRON ROD/CAP  
N=413592.1938  
E=807265.6703  
Z=417.86



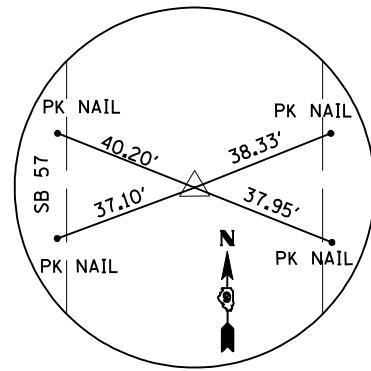
POINT, 2900  
242+61.11 1.32' RT.  
IRON ROD/CAP  
N=411623.5120  
E=807259.7910  
Z=413.53



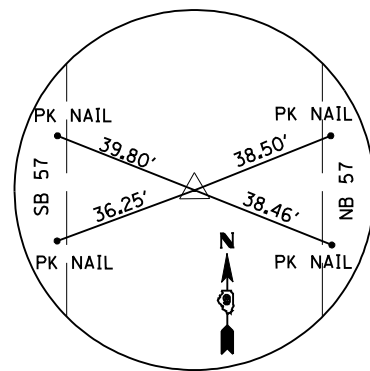
POINT, STA25800  
258+01.50 ON LINE  
IRON ROD/CAP  
N=410083.1318  
E=807256.3136  
Z=422.60



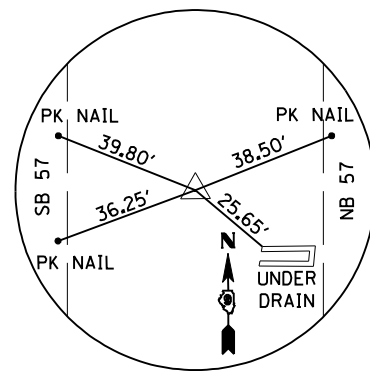
POINT, STA27300  
273+01.61 ON LINE  
R X R SPIKE  
N=408583.0287  
E=807251.6351  
Z=437.61



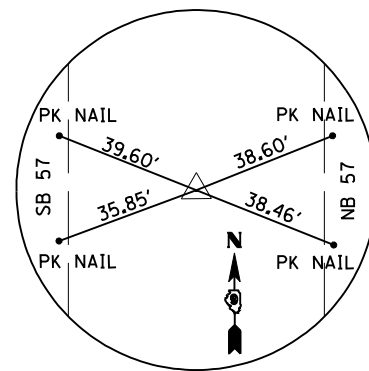
POINT, STA28900  
289+01.76 0.05' LT.  
IRON ROD/CAP  
N=406982.8863  
E=807246.6992  
Z=454.88



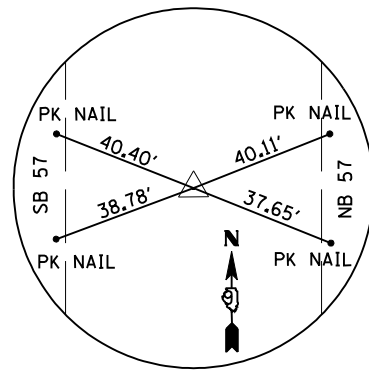
POINT, POT105  
308+62.58 0.01' RT.  
IRON ROD/CAP  
N=405022.0766  
E=807240.5254  
Z=462.16



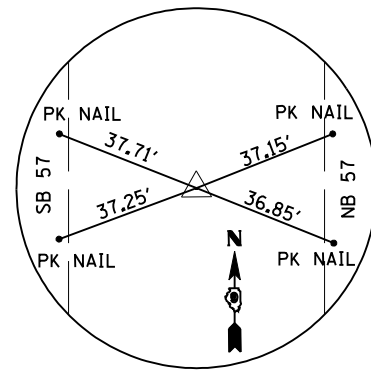
POINT, POC11  
330+82.17 0.28' LT.  
IRON ROD/CAP  
N=402815.1371  
E=807033.7808  
Z=471.59



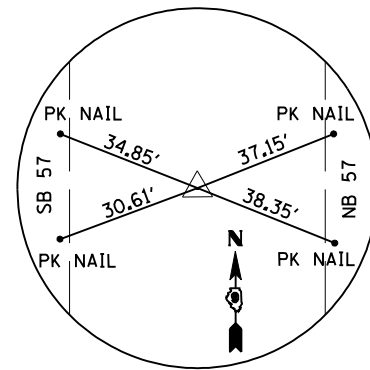
POINT, POT9  
350+54.64 0.02' RT.  
IRON ROD/CAP  
N=401046.1932  
E=806567.5842  
Z=491.36



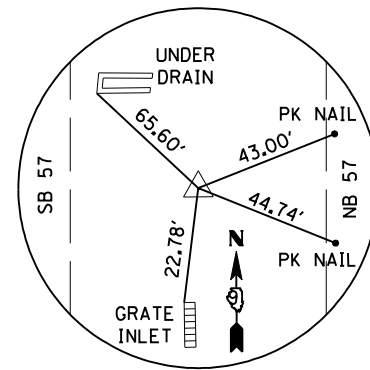
POINT, STA366  
366+03.91 0.14' LT.  
IRON ROD/CAP  
N=399573.6586  
E=806086.0612  
Z=493.76



POINT, STA384  
384+04.08 0.20' RT.  
R X R SPIKE  
N=397862.8023  
E=805526.0643  
Z=495.51



POINT, POT7  
401+54.24 0.16' LT.  
IRON ROD/CAP  
N=396199.2629  
E=804982.2839  
Z=504.03



POINT, MA103  
1461+58.94 0.15' LT.  
IRON ROD/CAP  
N=394414.5180  
E=804398.4660  
Z=479.00

FILE NAME =	USER NAME = \$USER\$	DESIGNED - MSK	REVISED -	<b>STATE OF ILLINOIS DEPARTMENT OF TRANSPORTATION</b>	<b>ALIGNMENT, TIES AND BENCHMARKS</b>			F.A.I. RTE.	SECTION	COUNTY	TOTAL SHEETS	SHEET NO.
\$FILEL\$		DRAWN - MSK	REVISED -		57	(X1-6-2,X1-5,(X1-4-1BR-1)R-1	WILLIAMSON	202	22			
PLOT SCALE = \$SCALE\$		CHECKED - JRD	REVISED -		SCALE: N. T. S.	SHEET NO. 2 OF 2 SHEETS	STA. 68+39.67 TO STA. 1461+36.88	CONTRACT NO. 78334				
PLOT DATE = \$DATE\$		DATE - 02/01/2013	REVISED -					ILLINOIS FED. AID PROJECT				