

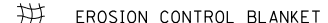


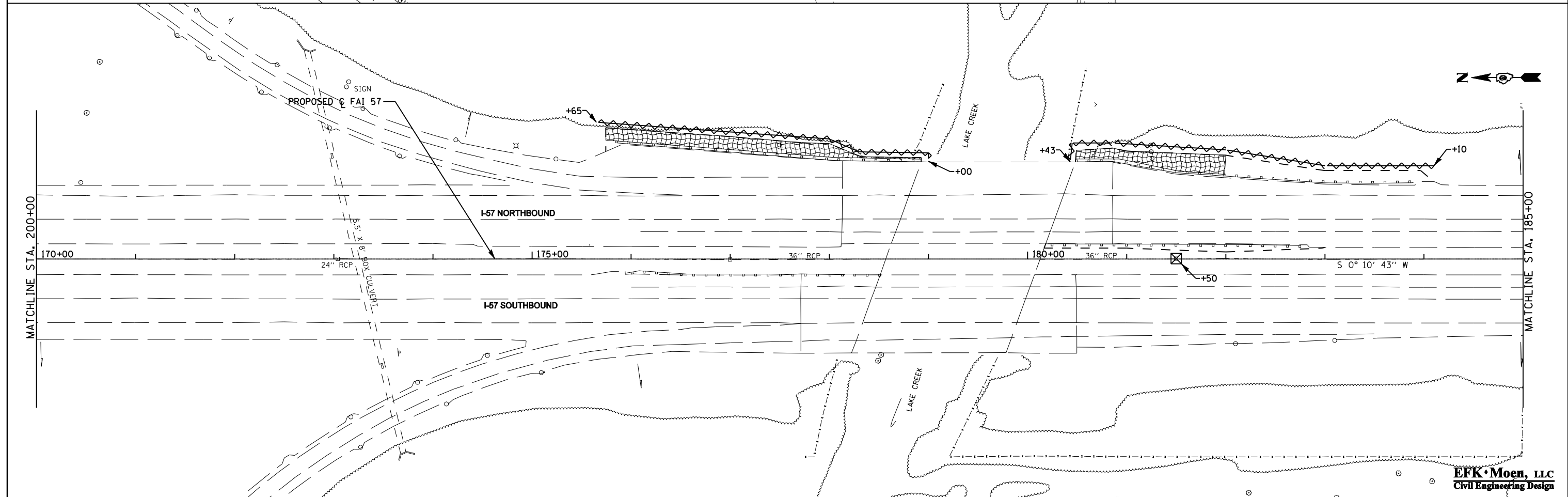
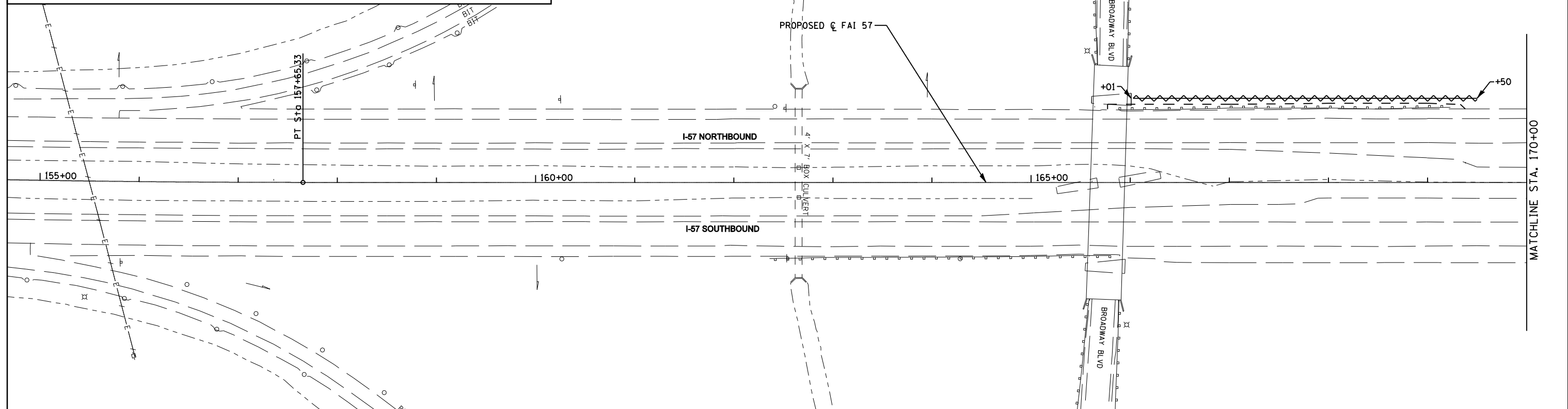


**TEMPORARY EROSION CONTROL**

**PERMANENT EROSION CONTROL**

-  DITCH FLOW
-  INLET AND PIPE PROTECTION
-  EROSION CONTROL BLANKET
-  TEMPORARY DITCH CHECK
-  PERIMETER EROSION BARRIER



FILE NAME =	USER NAME = *USER*	DESIGNED - JRD	REVISED -
*FILE*		DRAWN - MSK	REVISED -
	PLOT SCALE = *SCALE*	CHECKED - SLD	REVISED -
	PLOT DATE = *DATE*	DATE - 02/01/2013	REVISED -

**STATE OF ILLINOIS  
DEPARTMENT OF TRANSPORTATION**

**EROSION AND SEDIMENT CONTROL  
INTERSTATE 57**

SCALE: 1"=50'      SHEET NO. 1 OF 9 SHEETS      STA. 155+00 TO STA. 185+00

F.A.I. RTE.	SECTION	COUNTY	TOTAL SHEETS	SHEET NO.
57	(X1-6-2,X1-5,(X1-4-1BR-1)R-1	WILLIAMSON	202	57
CONTRACT NO. 78334				
FED. ROAD DIST. NO.    ILLINOIS FED. AID PROJECT				

**EFK Moen, LLC**  
Civil Engineering Design