

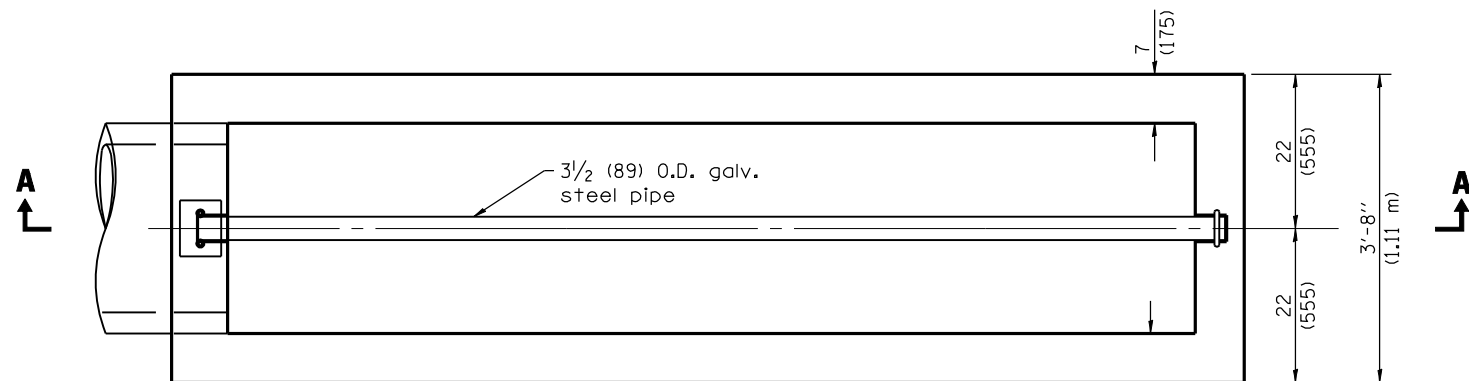
Material required for one inlet box

Bar	Qty.	Size	Length
h		No. 4 (No. 13)	
u		No. 4 (No. 13)	
u ₁		No. 4 (No. 13)	
u ₂		No. 4 (No. 13)	
v		No. 4 (No. 13)	
v ₁		No. 4 (No. 13)	
v ₂		No. 4 (No. 13)	
Concrete		cu. yds. (m ³)	
Reinf. Bars		lbs. (kg)	
Galv. Steel Pipe		3/2 (89) O.D.	

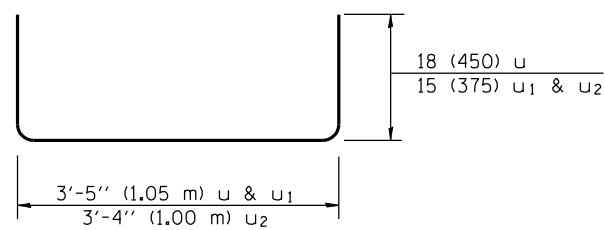
Varying dimension by Inlet Box

Station	Dimension, D
241+29	18.23 in.
251+39	22.56 in.
282+25	18.45 in.
315+32	20.68 in.
367+71	22.47 in.

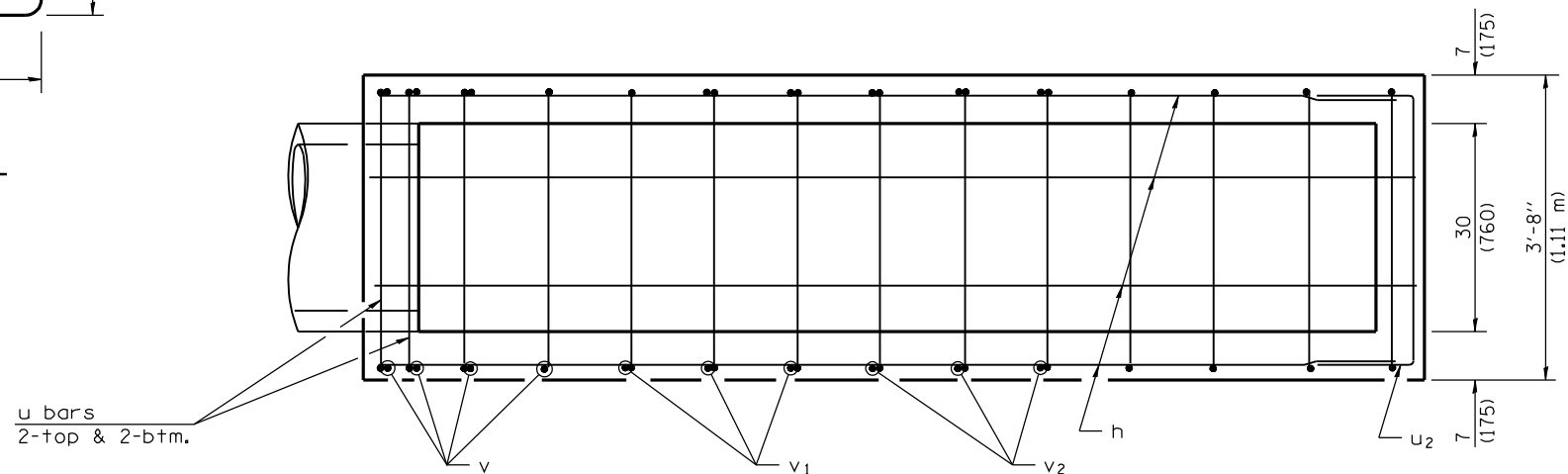
SECTION A-A



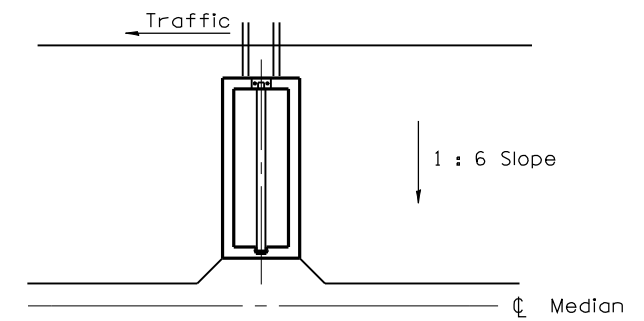
PLAN



Bars u, u₁ & u₂



PLAN OF REINFORCEMENT



Sketch showing location and direction of box in relation to \varnothing median.

GENERAL NOTES

All slope ratios are expressed as units of vertical displacement to units of horizontal displacement (V:H).

All dimensions are in inches (millimeters) unless otherwise shown.