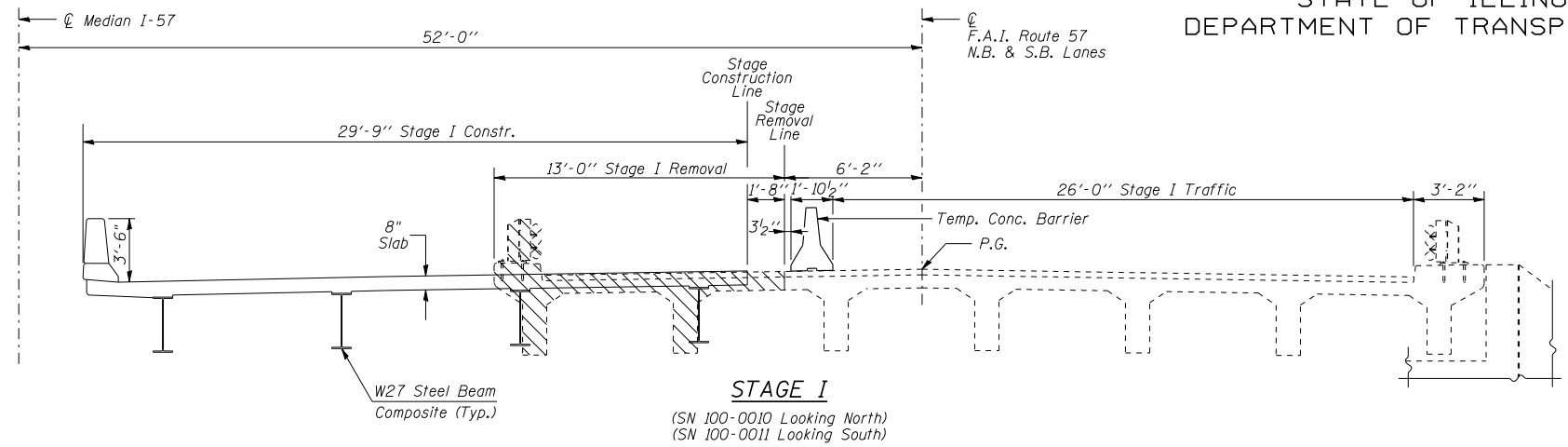
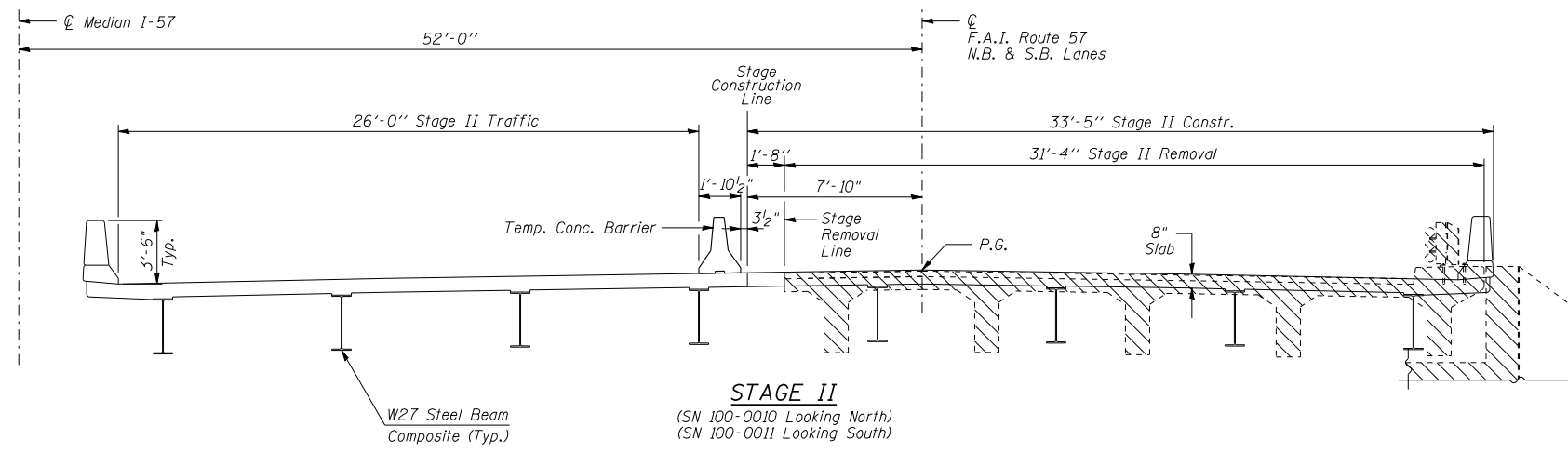


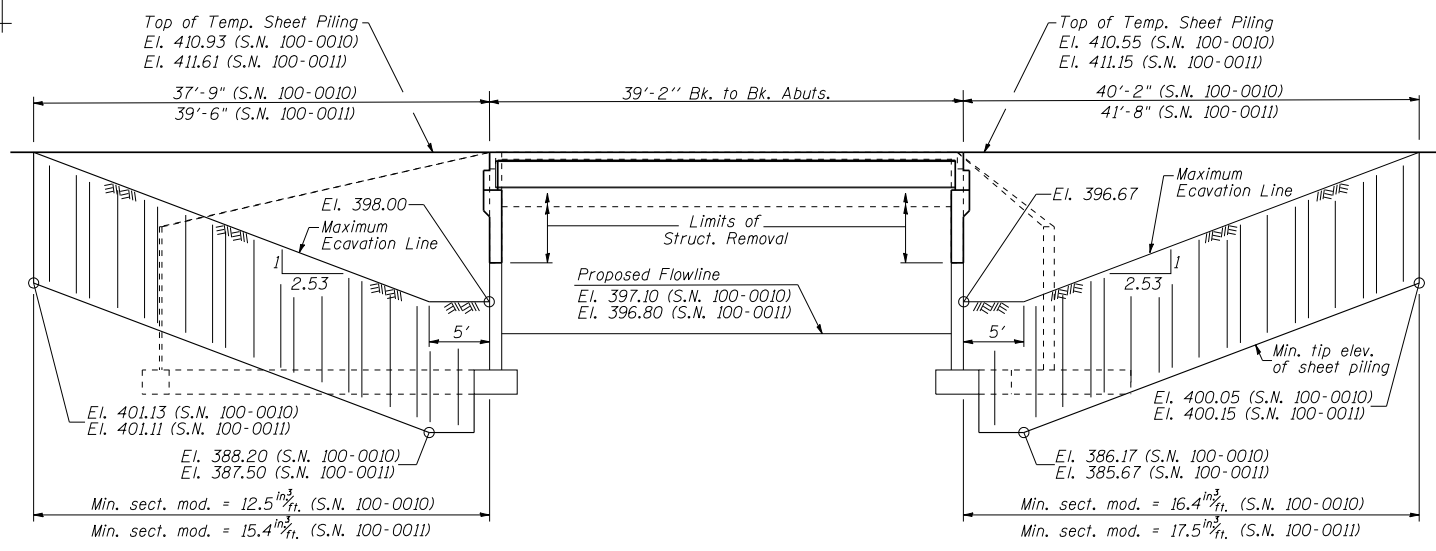
STATE OF ILLINOIS
DEPARTMENT OF TRANSPORTATION



STAGE I
(SN 100-0010 Looking North)
(SN 100-0011 Looking South)

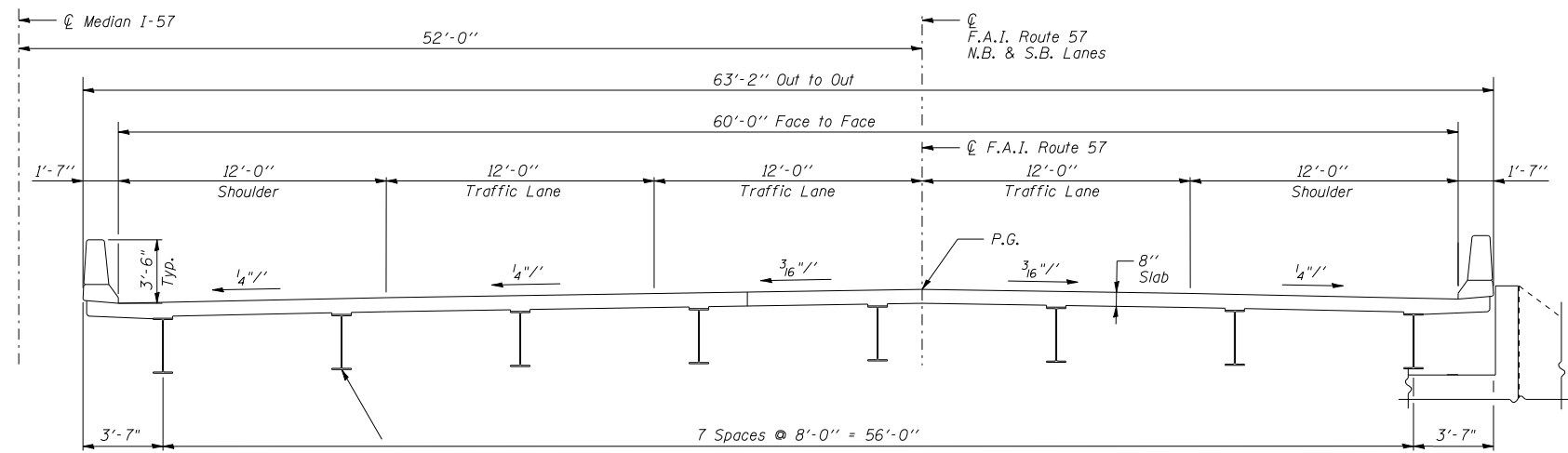


STAGE II
(SN 100-0010 Looking North)
(SN 100-0011 Looking South)



TEMPORARY SHEET PILING
(Looking East)
(Dimensions along ϕ F.A.I. 57)

Notes:
If the Contractor chooses to alter the temporary cantilevered sheet piling design requirements shown on the plans, a design submittal including plan details and calculations will be required for review and acceptance by the Engineer.
The Contractor shall connect the first sheet to the existing abutment wall to ensure stability of sheets driven to the top of the existing footing. This connection shall be reviewed and accepted by the Engineer and included in the cost for Temporary Sheet Piling.



CROSS SECTION
(SN 100-0010 Looking North)
(SN 100-0011 Looking South)

- STAGING NOTES:**
- Hatched areas indicate "Removal of Existing Superstructures."
 - Removal of existing bridge rail, deck and beams is included in the cost of "Removal of Existing Superstructures."
 - For quantities of "Temporary Concrete Barrier" see Roadway Plans.

STAGE CONSTRUCTION DETAILS
F.A.I. RTE. 57 OVER
LAKE CREEK BRANCH
STATION 228+25.00
STRUCTURE NO. 100-0010 (N.B.)
STRUCTURE NO. 100-0011 (S.B.)

<p>CRAWFORD MURPHY & TILLY, INC. CONSULTING ENGINEERS SPRINGFIELD, IL ■ AURORA, IL ■ ST. LOUIS, MO ROCKFORD, IL ■ PEORIA, IL ■ CHICAGO, IL</p> <p>DESIGNED BY: C.WJ CHECKED BY: WLB</p> <p>DRAWN BY: GLD DATE: 4/12/10</p>	SHEET NO. 3 29 SHEETS	F.A.S. RTE. I-57	SECTION (X1-4-1) BR -1	COUNTY WILLIAMSON	TOTAL SHEETS 202	SHEET NO. 86
	CONTRACT NO. 78334				FED. ROAD DIST. NO. 9 ILLINOIS FED. AID PROJECT	