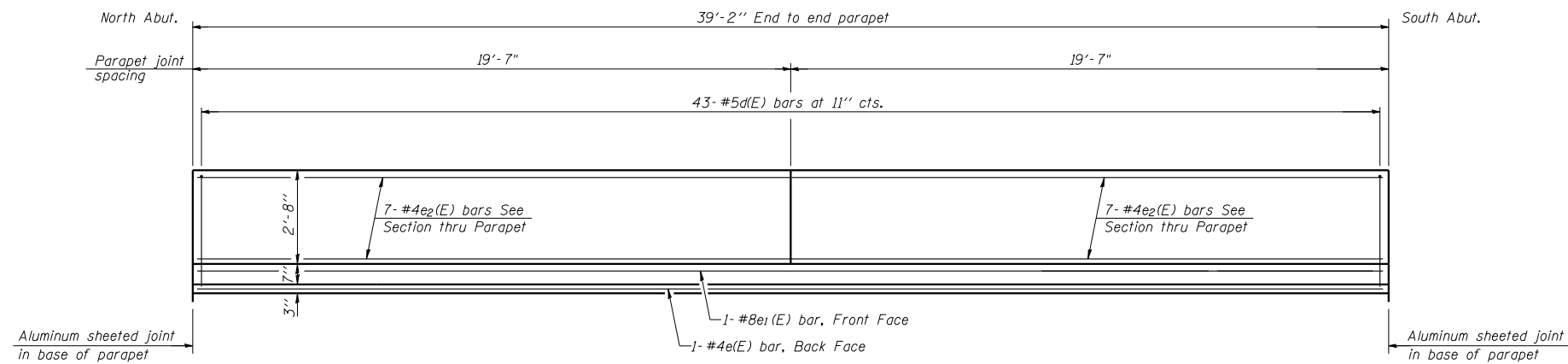
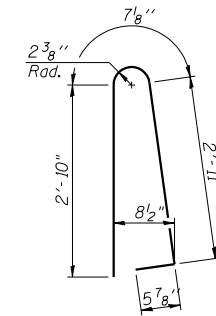


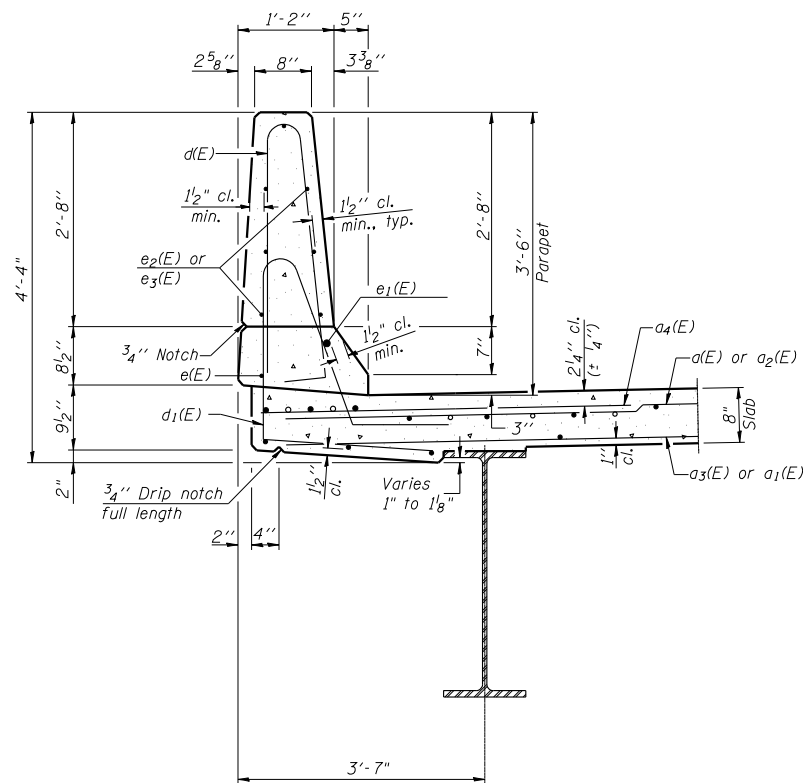
STATE OF ILLINOIS
DEPARTMENT OF TRANSPORTATION



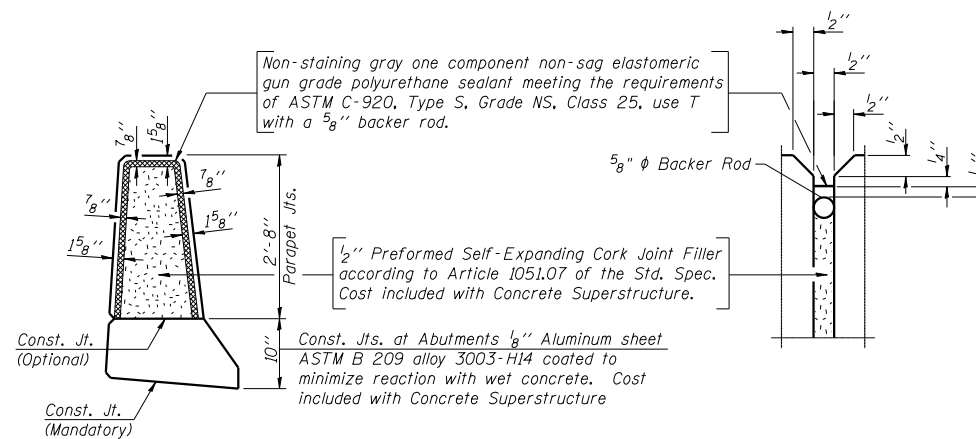
INSIDE ELEVATION OF PARAPET
(East Parapet shown, West opposite)



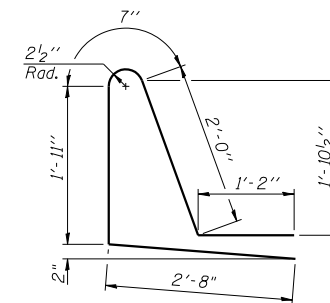
BAR d(E)



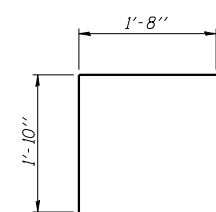
SECTION THRU PARAPET



PARAPET JOINT DETAILS



BAR d1(E)



BAR v40(E)

**S.N. 100-0010 (N.B.)
SUPERSTRUCTURE
BILL OF MATERIAL**

Bar	No.	Size	Length	Shape
d(E)	84	#5	29'-11"	—
a1(E)	52	#5	28'-11"	—
a2(E)	84	#5	32'-11"	—
a3(E)	52	#5	32'-7"	—
a4(E)	168	#6	6'-6"	—
a5(E)	4	#5	36'-10"	—
a6(E)	4	#5	41'-8"	—
b(E)	121	#5	38'-10"	—
d(E)	86	#5	6'-10"	⌋
d1(E)	86	#5	8'-4"	⌋
e(E)	2	#4	38'-10"	—
e1(E)	2	#8	38'-10"	—
e2(E)	28	#4	19'-3"	—
m(E)	8	#6	11'-1"	—
m1(E)	16	#6	13'-8"	—
m2(E)	4	#6	9'-4"	—
m3(E)	4	#6	13'-10"	—
m4(E)	4	#6	37'-2"	—
m5(E)	4	#6	41'-10"	—
v40(E)	124	#5	3'-6"	⌋
Reinforcement Bars, Epoxy Coated		Pound	19,140	
Concrete Superstructure		Cu. Yd.	86.8	
Bridge Deck Grooving		Sq. Yd.	252	
Protective Coat		Sq. Yd.	299	
Bar Splicers		Each	268	

**SUPERSTRUCTURE DETAILS (N.B.)
F.A.I. RTE. 57 OVER
LAKE CREEK BRANCH
STATION 228+25.00
STRUCTURE NO. 100-0010 (N.B.)**

CMT
CRAWFORD MURPHY & TILLY, INC.
CONSULTING ENGINEERS
SPRINGFIELD, IL ■ AURORA, IL ■ ST. LOUIS, MO
ROCKFORD, IL ■ PEORIA, IL ■ CHICAGO, IL

SHEET NO. 11 29 SHEETS	F.A.S. RTE. I-57	SECTION (X1-4-1) BR -1	COUNTY WILLIAMSON	TOTAL SHEETS 202	SHEET NO. 94
	CONTRACT NO. 78334			FED. ROAD DIST. NO. 9 ILLINOIS FED. AID PROJECT	

DESIGNED BY: DRAWN BY: GLD
CHECKED BY: WLB DATE: 4/12/10