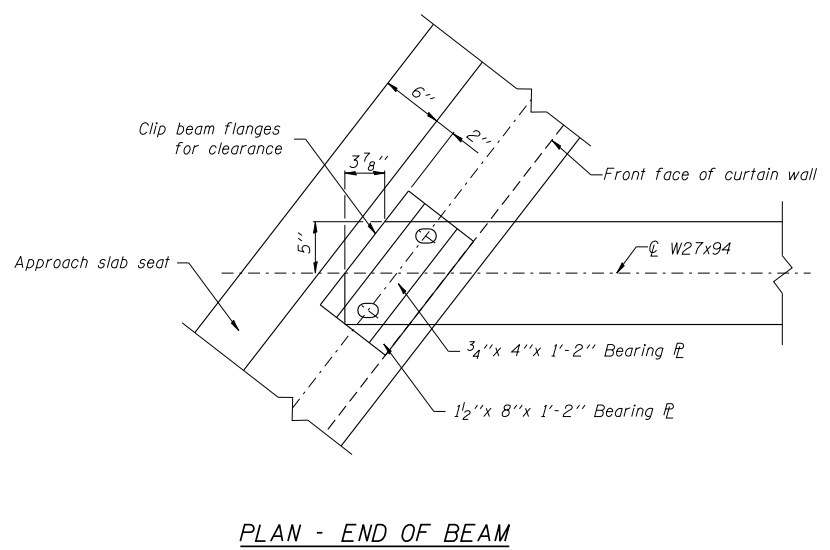
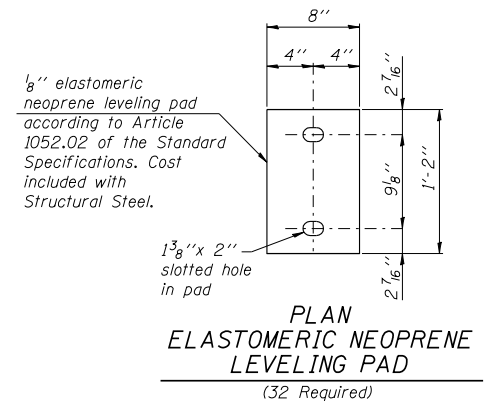
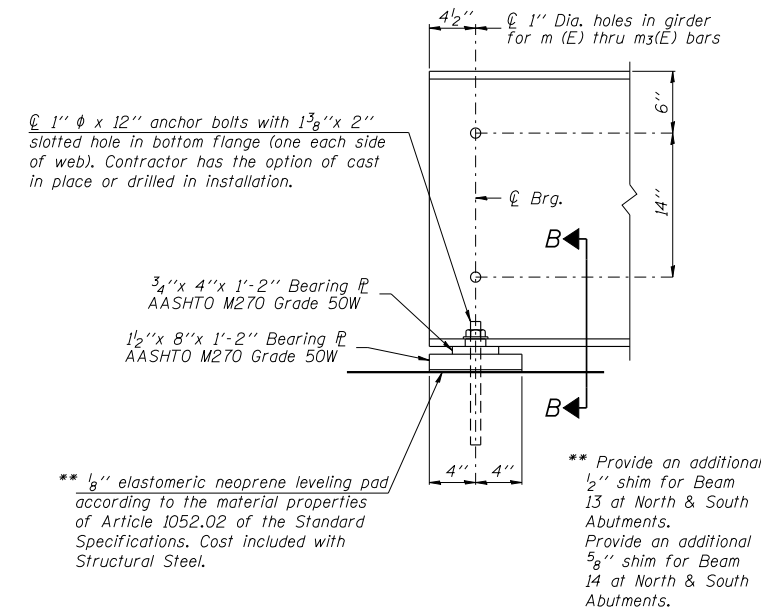
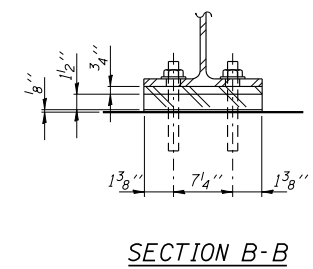
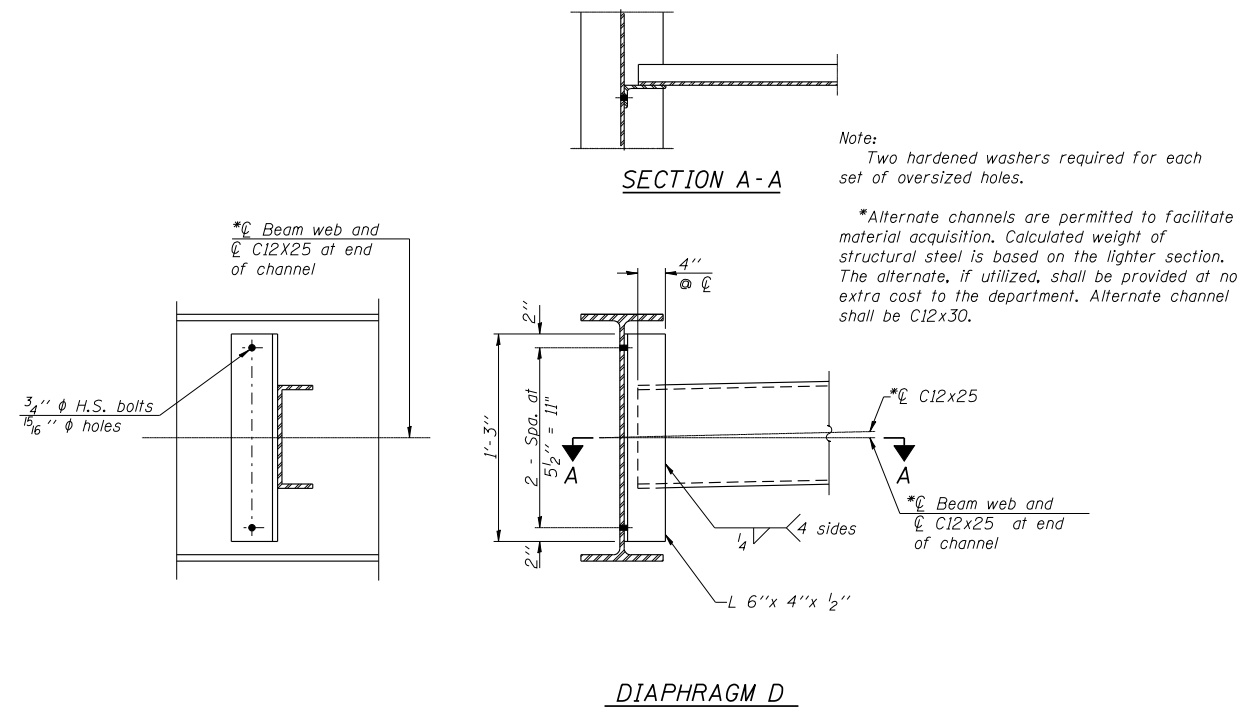


STATE OF ILLINOIS  
DEPARTMENT OF TRANSPORTATION



**NOTES:**  
1. All diaphragms shall be installed as steel is erected and secured with erection pins and bolts except as otherwise noted.

**FRAMING DETAILS**  
**F.A.I. RTE. 57 OVER**  
**LAKE CREEK BRANCH**  
**STATION 228+25.00**  
**STRUCTURE NO. 100-0010 (N.B.)**  
**STRUCTURE NO. 100-0011 (S.B.)**

<p>CRAWFORD MURPHY &amp; TILLY, INC. CONSULTING ENGINEERS SPRINGFIELD, IL ■ AURORA, IL ■ ST. LOUIS, MO ROCKFORD, IL ■ PEORIA, IL ■ CHICAGO, IL</p> <p>DESIGNED BY: KEH CHECKED BY: WLB</p> <p>DRAWN BY: GLD DATE: 4/12/10</p>	<p>SHEET NO. 19</p> <p>29 SHEETS</p>	<p>F.A.S. RTE.</p> <p>I-57</p>	<p>SECTION</p> <p>(X1-4-1) BR -1</p>	<p>COUNTY</p> <p>WILLIAMSON</p>	<p>TOTAL SHEETS</p> <p>202</p>	<p>SHEET NO.</p> <p>102</p>
	<p>CONTRACT NO. 78334</p>				<p>FED. ROAD DIST. NO. 9 ILLINOIS FED. AID PROJECT</p>	