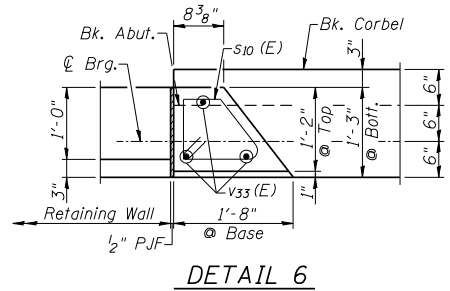
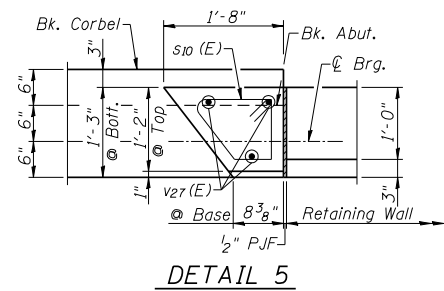
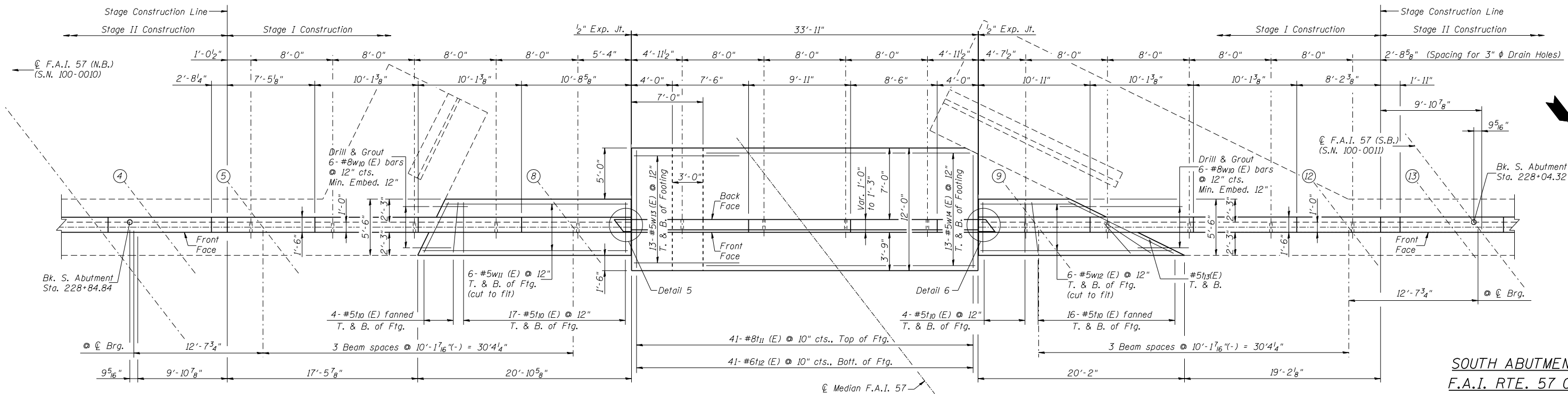
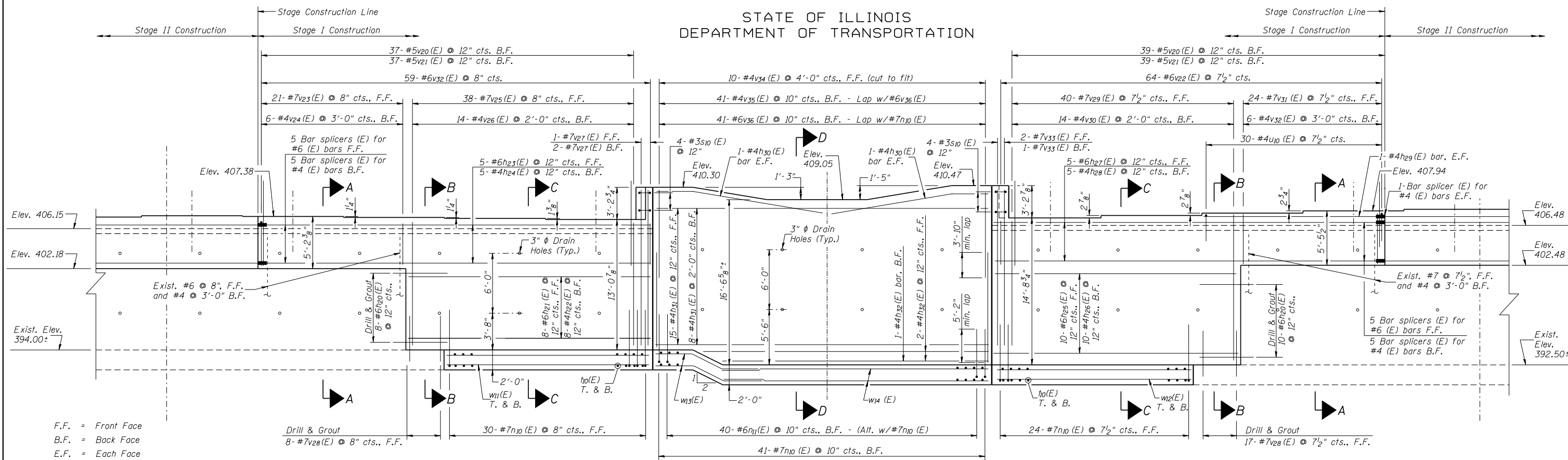


STATE OF ILLINOIS  
DEPARTMENT OF TRANSPORTATION



**NOTES:**

- Cost for Drill and Grout Bars shall be included in Reinforcement Bars, Epoxy coated, Min. Embedment = 9" (Unless noted otherwise)
- For sections A-A, B-B, C-C, D-D and Bill of Material See Sheet 26 of 29.
- See Sheet 23 of 29 for seat elevations.

**SOUTH ABUTMENT 2**  
**F.A.I. RTE. 57 OVER**  
**LAKE CREEK BRANCH**  
**STATION 228+25.00**  
**STRUCTURE NO. 100-0010 (N.B.)**  
**STRUCTURE NO. 100-0011 (S.B.)**

 CRAWFORD MURPHY & TILLY, INC. CONSULTING ENGINEERS SPRINGFIELD, IL ■ AURORA, IL ■ ST. LOUIS, MO ROCKFORD, IL ■ PEORIA, IL ■ CHICAGO, IL DESIGNED BY: DRAWN BY: GLD CHECKED BY: WLB DATE: 4/12/10	SHEET NO. 24	F.A.S. RTE. I-57	SECTION (X1-4-1) BR -1	COUNTY WILLIAMSON	TOTAL SHEETS 202	SHEET NO. 107
	29 SHEETS	CONTRACT NO. 78334		FED. ROAD DIST. NO. 9 ILLINOIS FED. AID PROJECT		