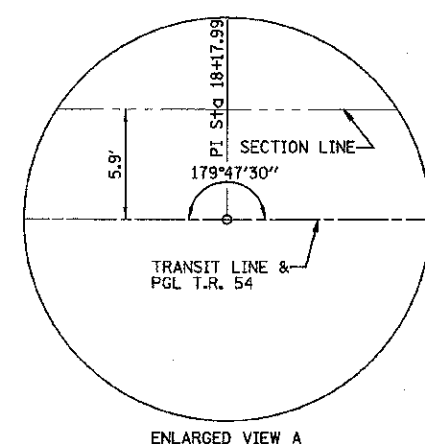
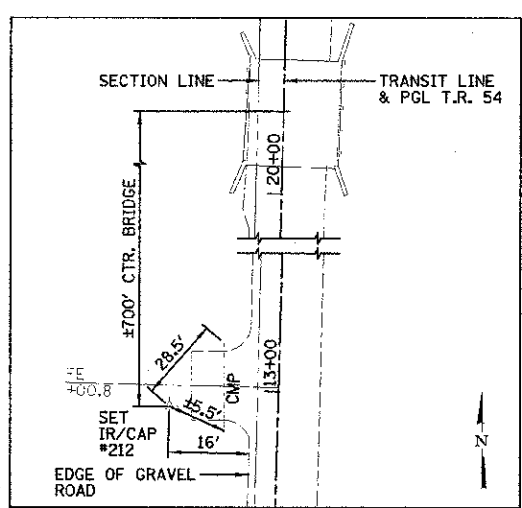


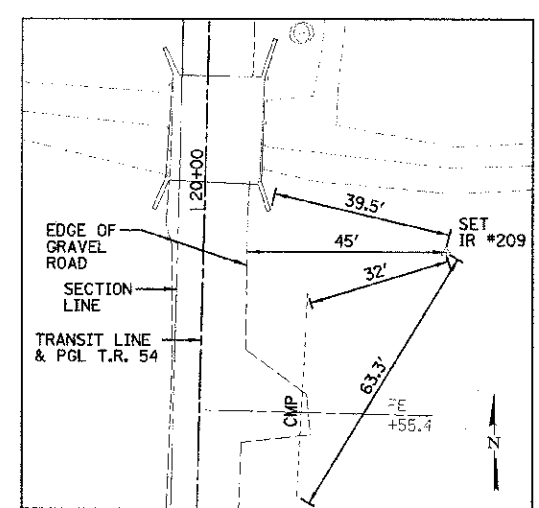
STATION	NORTHING	EASTING
17+00.00	1613509.479	862399.564
18+17.99	1613627.426	862402.755
20+18.00	1613827.381	862407.437
23+50.00	1614159.290	862415.210



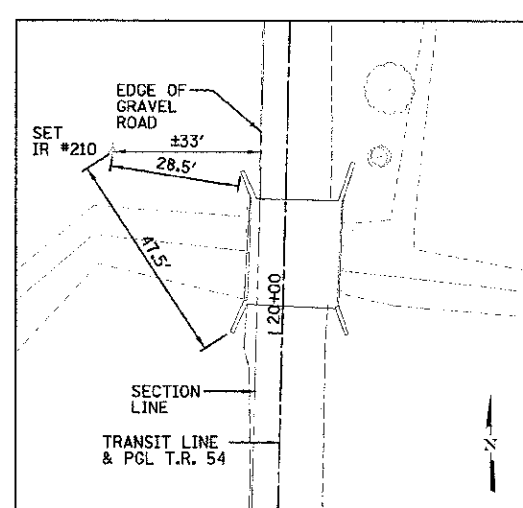
- BENCHMARK:**  
 #501, S.W. FACE OF WOOD POST @ S.E. CORNER OF RAILROAD & ROAD 800E (520± N. OF BRIDGE)  
 STA 25+55.33/30.69' RT.  
 ELEVATION = 620.86
- BENCHMARK:**  
 #502, TOP W. END 30" CONC. PIPE E. SIDE ROAD 800E 280' N. OF BRIDGE  
 STA 23+03.05/35.75' RT.  
 ELEVATION = 616.15
- BENCHMARK:**  
 #503, TOP S.W. WINGWALL NEAR S.W. CORNER BRIDGE DECK  
 STA 20+05.98/8.58' LT.  
 ELEVATION = 620.56



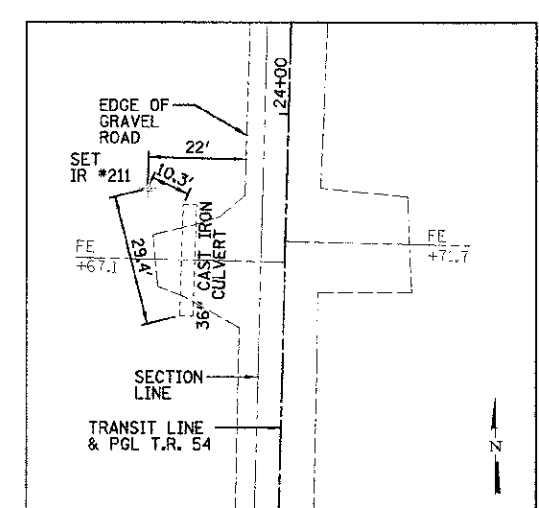
SET IR #212  
 STA 12+96.09/23.97' LT.  
 N=1613106.366  
 E=862364.679  
 ELEV=619.240



SET IR #209  
 STA 19+92.00/53.46' RT  
 N=1613800.138  
 E=862460.279  
 ELEV=617.640



SET IR #210  
 STA 20+39.26/58.35' LT  
 N=1613849.531  
 E=862369.596  
 ELEV=617.420



SET IR #211  
 STA 23+82.73/30.71' LT  
 N=1614192.732  
 E=862385.277  
 ELEV=618.800



DESIGNED - JJC  
 CHECKED - JMC  
 DRAWN - JJO  
 DATE - 01/18/13

REVISED -  
 REVISED -  
 REVISED -  
 CHECKED - MSW

STATE OF ILLINOIS  
 DEPARTMENT OF TRANSPORTATION

ALIGNMENT, SURVEY TIES AND BENCHMARKS

SCALE: SHEET NO. OF SHEETS STA. TO STA.

T.R.	SECTION	COUNTY	TOTAL SHEETS	SHEET NO.
54	11-17129-01-BR	LIVINGSTON	16	4
CONTRACT NO. 87503			ILLINOIS FED. AID PROJECT	