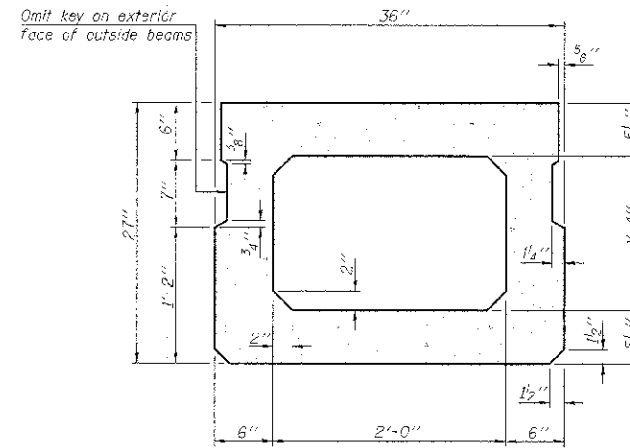
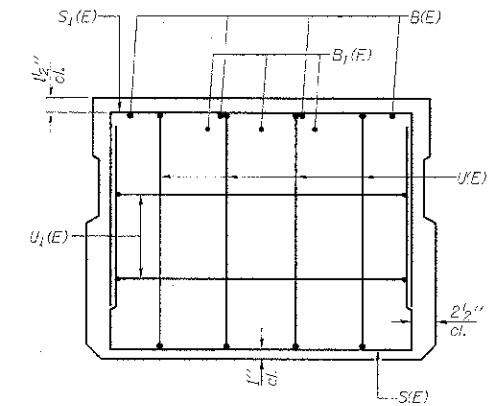


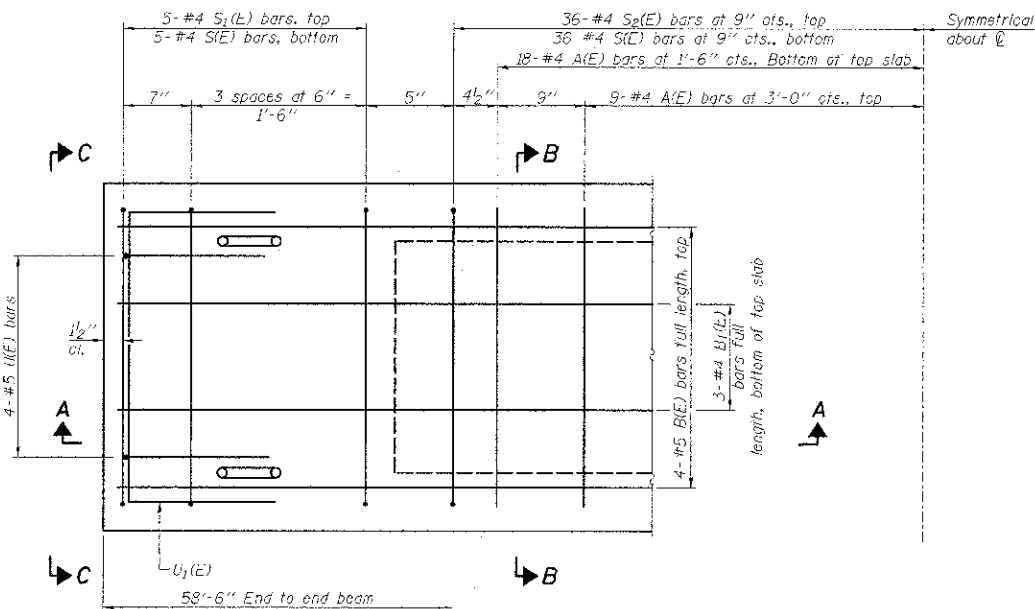
SECTION A-A



SECTION B-B
(Showing dimensions)

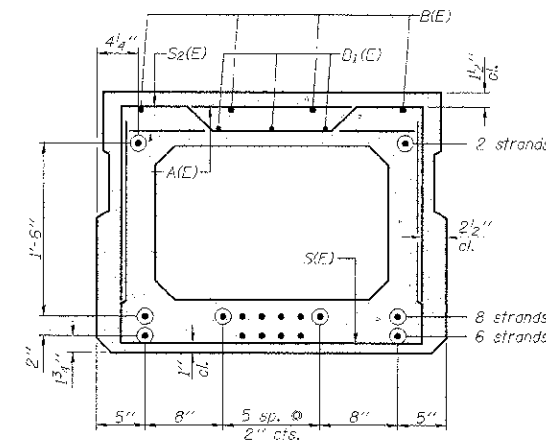


VIEW C-C



PLAN VIEW

Note: Spacing of S1(E) and S2(E) bars may be adjusted up to 4" in the immediate area of the transverse tie diaphragms to miss the block outs for the transverse ties.



SECTION B-B

(Showing reinforcement and permissible strand locations)
Note: Place the number of strands specified in each row symmetrically about the centerline of beam in the permissible strand locations shown.

MINIMUM BAR LAP

#4 Lar = 2'-0"
#5 bar = 2'-6"

BAR LIST
ONE BEAM ONLY
(For information only)

Bar	No.	Size	Length	Shape
A(C)	54	#4	2'-7"	—
B(E)	8	#5	30'-5"	—
B1(E)	9	#4	20'-9"	—
S(E)	82	#4	6'-5"	—
S1(E)	10	#4	5'-11"	—
S2(E)	72	#4	6'-2"	—
U(E)	9	#5	4'-6"	—
U1(E)	4	#4	5'-0"	—

Note: See Sheet B4 for additional details and Bill of Material.

PD-2736-0

7-1-10

Farnsworth GROUP, INC.
2700 McGraw Drive
Bloomington, Illinois 61704
318/695-8435, 318/663-1571 fax

DESIGNED - CEE
CHECKED - JML
DRAWN - DJM
DATE - 01/18/13
CHECKED - MSW

REVISED
REVISED
REVISED
REVISED

STATE OF ILLINOIS
DEPARTMENT OF TRANSPORTATION

27" x 36" PPC DECK BEAM
STRUCTURE NO. 053-4204

SHEET NO. B3 OF 9 SHEETS

T.R.	SECTION	COUNTY	TOTAL SHEETS	SHEET NO.
54	11-17129-01-BR	LIVINGSTON	16	8
				CONTRACT NO. 87503
ILLINOIS FED. AID PROJECT				