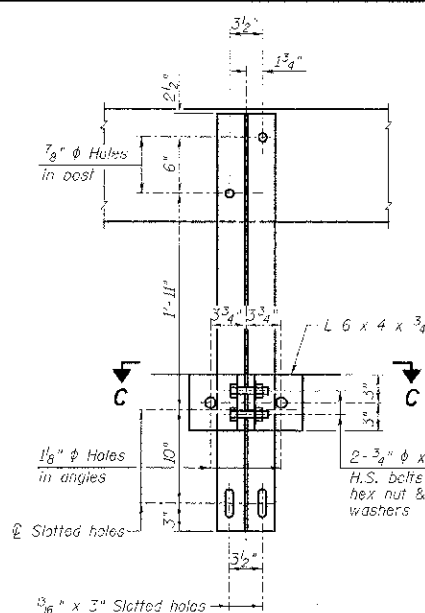
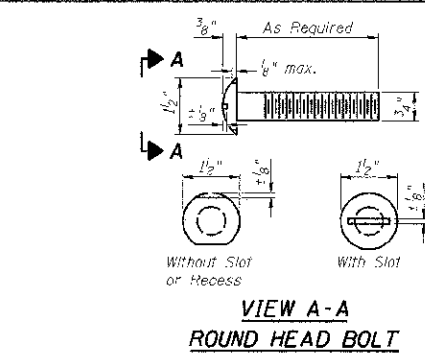


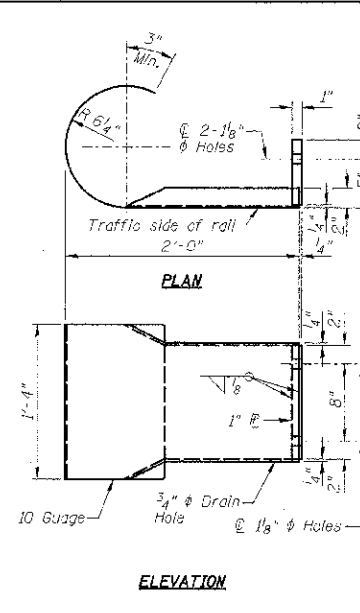
SECTION AT RAILING POST



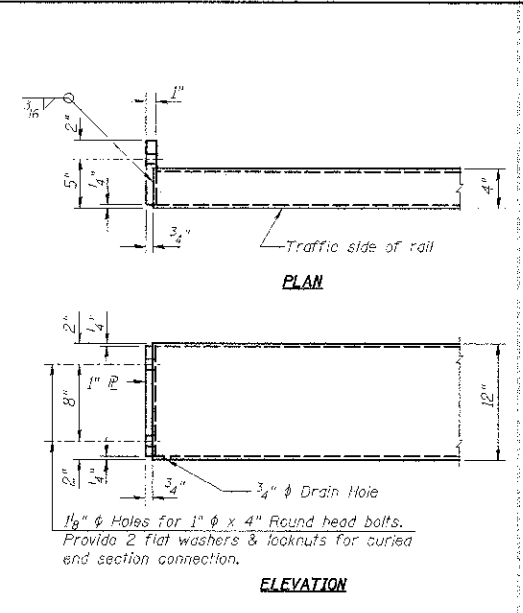
SECTION B-B



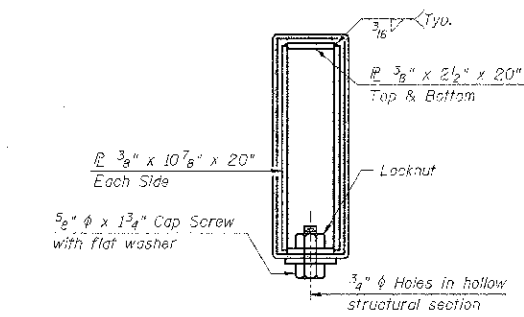
VIEW A-A ROUND HEAD BOLT



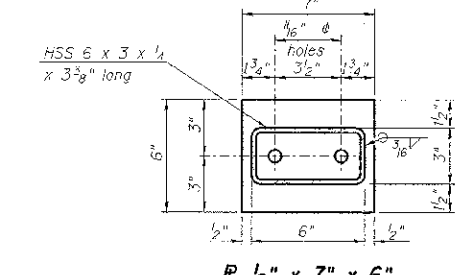
CURLED END SECTION



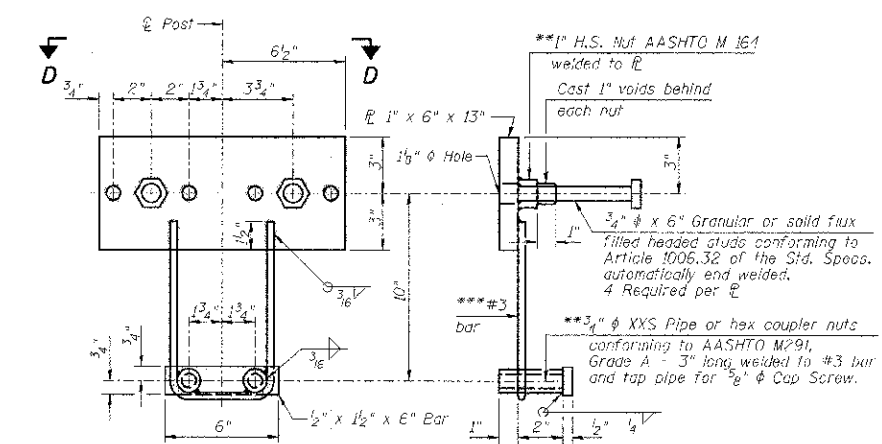
END OF RAIL DETAILS



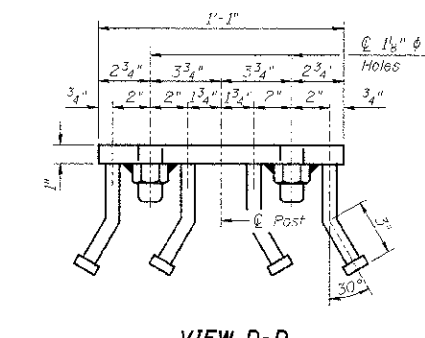
SECTIONS AT RAIL SPLICE



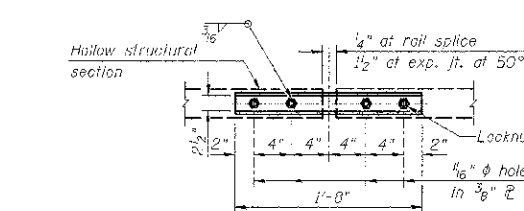
SECTION C-C



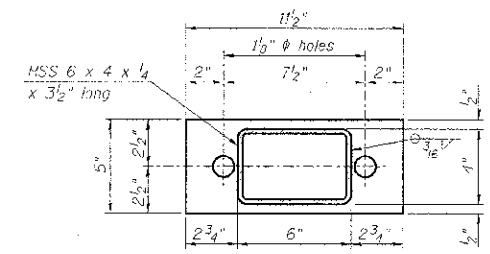
ANCHOR DEVICE



VIEW D-D



PLAN-BOTT. SPLICE P TYPICAL

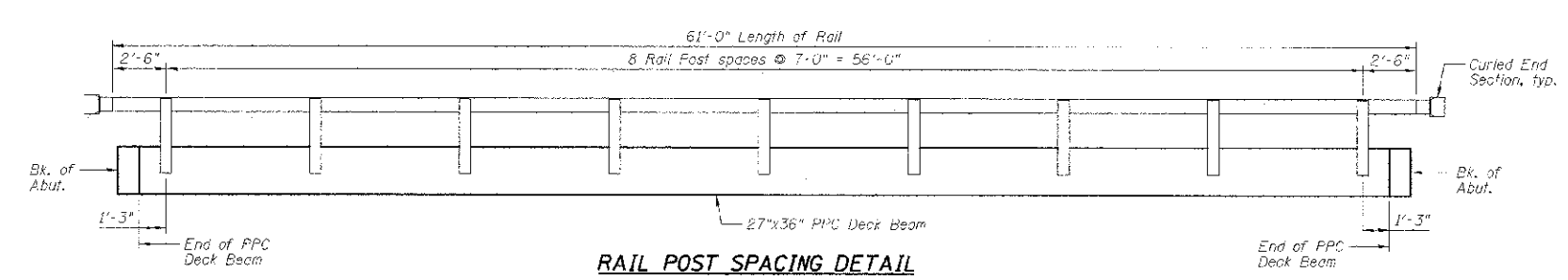


SECTION C-C

***Threaded areas shall be plugged or blocked off during casting of beam.
 ***Whenever the lower insert assemblies interfere with strand locations, the #3 bars shall be cut and adjusted in order to allow raising or lowering of the lower inserts. Maximum adjustment not to exceed 1/2 inch.

NOTES:

- 1.) All field drilled holes shall be coated with an approved zinc rich paint before erection.
- 2.) All steel rail elements shall be galvanized according to Article 509.05 of the Standard Specifications.
- 3.) *The studs of the anchor devices shall be placed below the top reinforcement bars and the outermost longitudinal reinforcement bar shall be placed directly above the studs of the rail post anchor device.



RAIL POST SPACING DETAIL

BILL OF MATERIAL

Item	Unit	Quantity
Steel Railing, Type S1	Foot	122

(10'-9" Maximum Post Spacing)

Farnsworth GROUP, INC.
 2709 McGraw Drive
 Skokie, Illinois 60074
 308663-8435, 308662-1271 fax

DESIGNED - CEE
 CHECKED - JML
 DRAWN - DJM
 CHECKED - MSW
 DATE - 01/18/13

REVIS
 REVIS
 REVIS
 REVIS

STATE OF ILLINOIS
 DEPARTMENT OF TRANSPORTATION

STEEL RAILING, TYPE S1
 STRUCTURE NO. 053-4204

SHEET NO. 05 OF 9 SHEETS

T.R.	SECTION	COUNTY	TOTAL SHEETS	SHEET NO.
54	11-17129-01-BR	LIVINGSTON	16	12

CONTRACT NO. 87503
 ILLINOIS FED. AID PROJECT