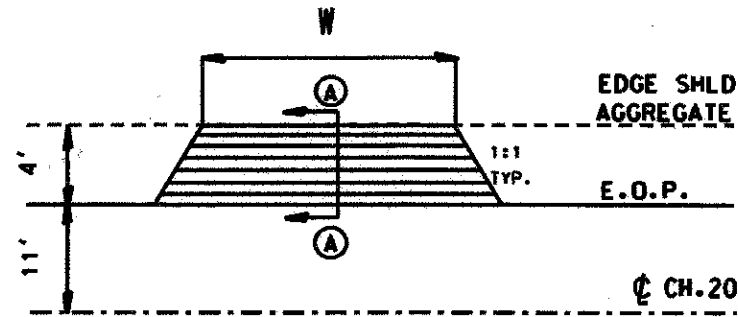
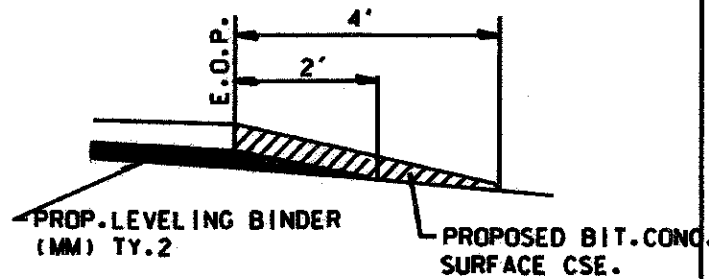


TYPICAL ENTRANCE DETAIL

W: WIDTH OF APPROACH PADS IS ESTIMATED AT 20' PER ENTRANCE. THE ACTUAL CONSTRUCTED WIDTH MAY VARY AS DIRECTED BY THE ENGINEER TO FIT THE EXISTING ENTRANCES.

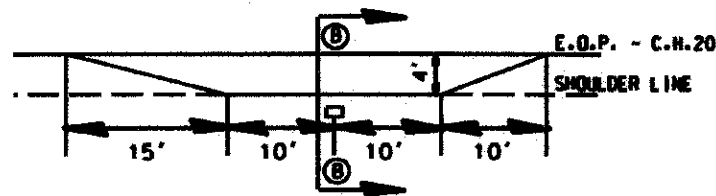


SECTION A-A

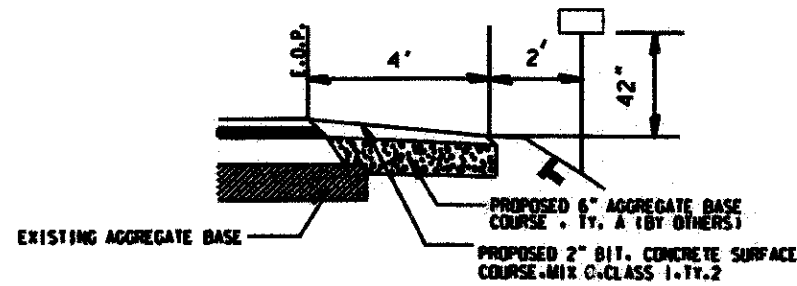


ESTIMATED QUANTITIES-65 ENTRANCES		
ITEM	UNIT	QUANTITY
BITUMINOUS MATERIALS (PRIME COAT)	GAL	58
LEVELING BINDER(MM) TY.2	TON	16
BIT. CONC. SURFACE CSE. MIX C CL 1 TY. 2	TON	41

TYPICAL MAILBOX TURNOUT DETAIL



SECTION B-B



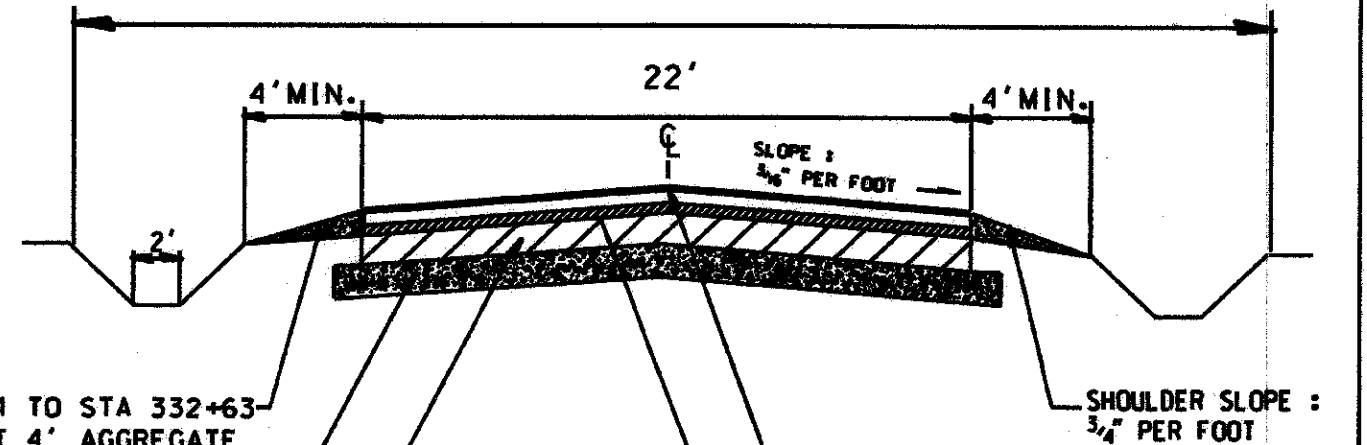
ESTIMATED QUANTITIES - 45 MAILBOX TURNOUTS		
ITEM	UNIT	QUANTITY
BIT. MATERIALS (PRIME COAT)	GAL	304
MIX C, CLASS 1, TY. 2	TON	61
BIT. CONC. SURFACE CSE.		

MAILBOX TURNOUT SCHEDULE			
STATION	SIDE	STATION	SIDE
35+55	RT	206+35	RT
40+53	RT	207+38	RT
42+43	RT	208+12	RT
79+94	RT	208+42	RT
83+55	RT	214+68	RT
125+64	RT	218+67	RT
127+97	RT	248+74	LT
138+07	RT	255+12	LT
152+54	RT	255+61	RT
154+33	RT	257+41	LT
158+86	RT	258+74	LT
162+02	RT	259+23	LT
163+10	RT	261+00	LT
182+03	RT	261+86	LT
187+02	RT	264+65	LT
195+57	RT	269+11	LT
199+91	RT	271+53	LT
200+28	RT	287+31	LT
201+10	RT	295+92	LT
201+64	RT	299+70	LT
203+60	RT	306+36	RT
204+61	RT	318+05	RT
205+36	RT		

SECTION	COUNTY	TOTAL SHEETS	SHEET NO.
08-00072-08-RS	KANKAKEE	3	2
ILLINOIS PROJECT C-93-088-12		CONTRACT NO. 87527	

TYPICAL CROSS SECTION STA 22+54 TO STA 332+63

VARIES: 60' to 70' R.O.W.



STA 22+54 TO STA 332+63
CONSTRUCT 4' AGGREGATE
SHOULDERS TY.B

EXISTING 7" AGGREGATE
BASE

EXISTING 11 1/2" BIT.
CONC. SURFACE

STA 22+54 TO STA 332+63
CONSTRUCT HOT-MIX ASPHALT
SURFACE CSE. MIX C, CLASS 1
TY. 2 1 1/2" THICK, 22' WIDE

Sta. 22+79 TO Sta. 332+38
CONSTRUCT LEVELING BINDER
(MACHINE METHOD) TY. 2,
3/4" THICK, 22' WIDE

ESTIMATED QUANTITIES ON TANGENTS

ITEM	UNIT	QUANTITY
AGGREGATE SHOULDERS TY.B	TON	3529
BITUMINOUS MATERIALS (PRIME COAT)	GALLON	7992
AGGREGATE (PRIME COAT)	TON	157
LEVELING BINDER (MM), NSO	TON	3724
HOT-MIX ASPHALT SURF. CSE. MIX C, NSO	TON	6367
SHORT-TERM PAVEMENT MARKING	FOOT	6202