

STATE OF ILLINOIS
DEPARTMENT OF TRANSPORTATION
DIVISION OF HIGHWAYS
**PLANS FOR PROPOSED
IMPROVEMENTS TO TRAIL**

ITEP FUNDING
CITY OF KANKAKEE
RIVERFRONT TRAIL PHASE 2a
SECTION 10-00276-00-BT
PROJECT NO. TE00D3(073)
JOB NO. C-93-121-12
KANKAKEE COUNTY

INDEX OF SHEETS

- 1 COVER SHEET, INDEX OF SHEETS & STANDARDS
- 2 GENERAL NOTES, PAVEMENT DESIGN, STATUS OF UTILITIES, HMA MIXTURE REQUIREMENTS, SUMMARY OF BENCHMARKS
- 3 SUMMARY OF QUANTITIES
- 4 TYPICAL CROSS SECTIONS
- 5 SCHEDULE OF QUANTITIES
- 6 - 14 PLAN AND PROFILE
- 15 - 18 STORM WATER POLLUTION PREVENTION PLAN

STANDARDS

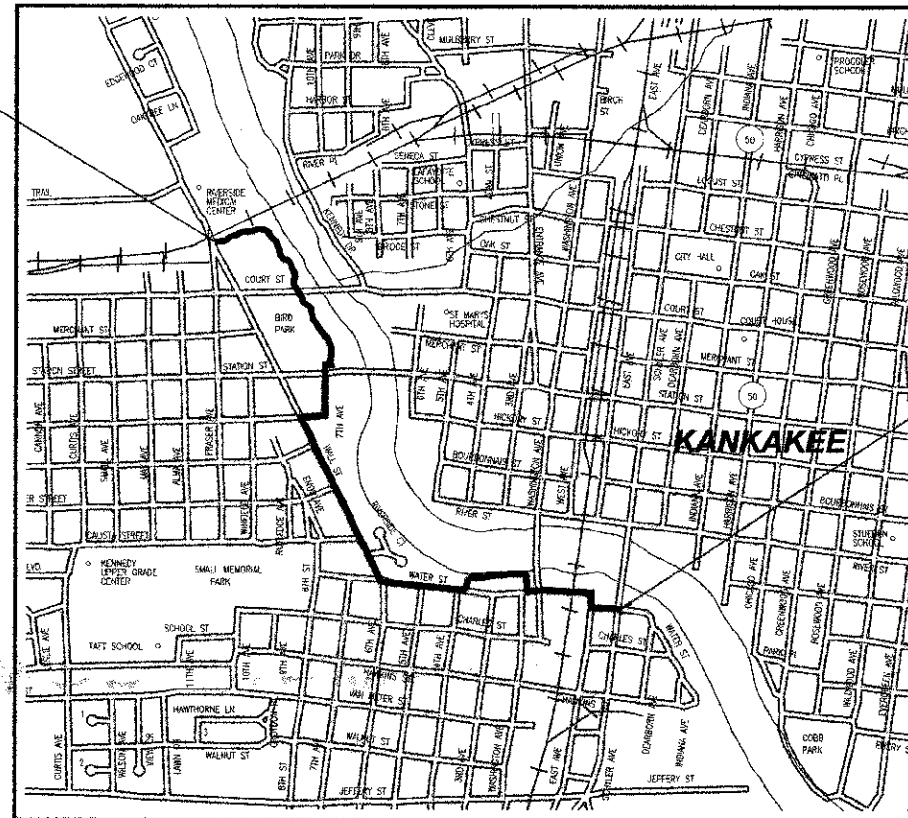
- 000001-06 STANDARD SYMBOLS, ABBREVIATIONS AND PATTERNS
- 280001-07 TEMPORARY EROSION CONTROL SYSTEMS
- 424001-07 PERPENDICULAR CURB RAMPS FOR SIDEWALKS
- 424006-01 DIAGONAL CURB RAMPS FOR SIDEWALKS
- 424011-01 CORNER PARALLEL CURB RAMPS FOR SIDEWALKS
- 424016-01 MID-BLOCK CURB RAMPS FOR SIDEWALKS
- 424021-01 DEPRESSED CORNER FOR SIDEWALKS
- 424026-01 ENTRANCE/ALLEY PEDESTRIAN CROSSING
- 701001-02 OFF-ROAD OPERATIONS, 2L, 2W, MORE THAN 15'(4.5m) AWAY
- 701006-04 OFF-ROAD OPERATIONS, 2L, 2W, 15'(4.5m) TO 24'(600mm) FROM PAVEMENT EDGE
- 701101-03 OFF-ROAD OPERATIONS, MULTILANE, 15'(4.5m) TO 24'(600mm) FROM PAVEMENT EDGE
- 701301-04 LANE CLOSURE, 2L, 2W, SHORT TIME OPERATIONS
- 701427-01 LANE CLOSURE, MULTILANE, INTERMITTENT OR MOVING OPERATIONS, FOR SPEEDS ≤ 40 MPH
- 701501-06 URBAN LANE CLOSURE, 2L, 2W, UNDIVIDED
- 701801-05 SIDEWALK, CORNER OR CROSSWALK CLOSURE
- 701901-02 TRAFFIC CONTROL DEVICES
- 720001-01 SIGN PANEL MOUNTING DETAILS
- 720006-03 SIGN PANEL ERECTION DETAILS
- 720011-01 METAL POSTS FOR SIGNS, MARKERS, AND DELINEATORS
- 720016-01 TELESCOPING STEEL SIGN SUPPORT
- 729001-01 APPLICATIONS OF TYPE 'A' AND 'B' METAL POSTS (FOR SIGNS & MARKERS)
- 780001-05 TYPICAL PAVEMENT MARKINGS
- 836001-02 LIGHT POLE FOUNDATION

BUREAU OF LOCAL ROADS AND STREETS:
DISTRICT 3, ROGER BLAKLEY, (815) 434-8495

DESIGNATED BIKE ROUTE ROADS			
ROAD	AVERAGE DAILY TRAFFIC	SPEED LIMIT	DESIGN SPEED
7TH AVENUE	150	20	20
HICKORY STREET	125	25	30
WATER STREET	4450	30	30
EAST AVENUE	3350	30	30

DESIGN DESIGNATION - PATH

DESIGN SPEED = 20 MPH
STA. 139+70 TO STA. 221+50
2012 ADT = 20 PEDES 0 BIKES
DESIGN 2032 ADT = 50 PEDES 150 BIKES
SEE SHEET 2 FOR PAVEMENT DESIGN

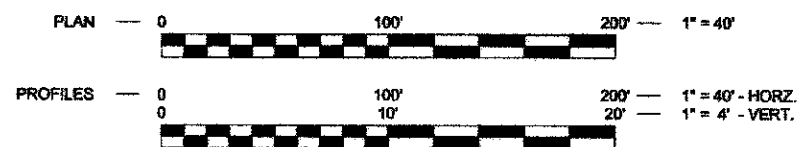


LOCATION MAP
NOT TO SCALE

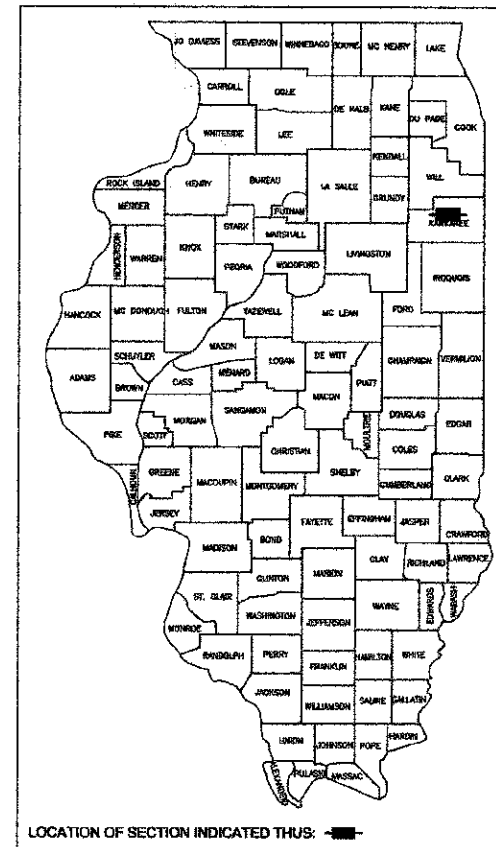
SECTIONS 5 AND 6, TOWNSHIP 30 NORTH, RANGE 12 EAST
SECTIONS 31, TOWNSHIP 31 NORTH, RANGE 12 EAST

GROSS LENGTH OF IMPROVEMENT = 8,100.00 FEET = 1.549 MILES
NET LENGTH OF IMPROVEMENT = 8,180.00 FEET = 1.549 MILES

STANDARD SCALES



CALL J.U.L.I.E. BEFORE YOU DIG
(Joint Utility Locating Information For Excavators)
PH.# 1-800-892-0123



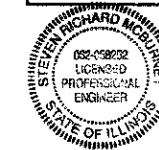
PREPARED IN ACCORDANCE WITH THE
POLICIES OF THE BUREAU OF LOCAL
ROADS AND STREETS MANUAL
STATE OF ILLINOIS
DEPARTMENT OF TRANSPORTATION
DIVISION OF HIGHWAYS

APPROVED 1-25 20 13
Dina Epstein
MAYOR, CITY OF KANKAKEE

APPROVED 1-28 20 13
Bill
EXECUTIVE DIRECTOR, KANKAKEE VALLEY PARK DISTRICT

PASSED 2-4 20 13
Dan R. E.
DISTRICT 3 LOCAL ROADS AND STREETS ENGINEER

RELEASED FOR BID
BASED ON LIMITED REVIEW 2-4 20 13
Paul H. ...
DEPUTY DIRECTOR OF HIGHWAYS, REGION 2 ENGINEER



Steven R. McBurney 1-28-13
STEVEN R. MCBURNEY P.E.# 062-058252 DATE
EXPIRATION DATE OF P.E. LICENSE: 11-30-13

PRINTED BY THE AUTHORITY OF THE STATE OF ILLINOIS

REVISIONS				
NO.	DATE	BY	GENERAL DESCRIPTION	SHEETS CHANGED
1	7/6/12	MRC	PER IDOT REVIEW	ALL

CONTRACT NO. 87539	FED. ROAD DIST. NO. ILLINOIS	FED. AID PROJECT								
*10-00276-00-BT										
 TYSON ENGINEERING, INC. CONSULTING CIVIL ENGINEERS AND SURVEYORS DESIGN FIRM LICENSE #184-001138 367 SOUTH SCHUYLER AVENUE KANKAKEE, ILLINOIS 60901 PHONE (815) 852-7406										
This document and the ideas and designs incorporated herein, as an instrument of professional service, is the property of Tyson Engineering Inc. and is not to be used in whole or in part, for any other project without written authorization of Tyson Engineering Inc. Do not scale drawings. Use dimensions only. Contractor shall be responsible for verifying all dimensions. Information herein and herein is confidential.										
REVISIONS <table border="1"> <thead> <tr> <th>NO.</th> <th>DATE</th> <th>BY</th> <th>DESCRIPTION</th> </tr> </thead> <tbody> <tr> <td>1</td> <td>7/6/12</td> <td>MRC</td> <td>PER IDOT REVIEW</td> </tr> </tbody> </table>			NO.	DATE	BY	DESCRIPTION	1	7/6/12	MRC	PER IDOT REVIEW
NO.	DATE	BY	DESCRIPTION							
1	7/6/12	MRC	PER IDOT REVIEW							
COVER SHEET										
PROPOSED IMPROVEMENTS FOR RIVERFRONT TRAIL PHASE II KANKAKEE, ILLINOIS										
SECTION 10-00276-00-BT										
DATE: 6/7/12	JOB NO. E10054									
SCALE: N/A	FILE NO.									
DRAWN BY: MRC	SHEET									
CHECKED BY: SRM	1									