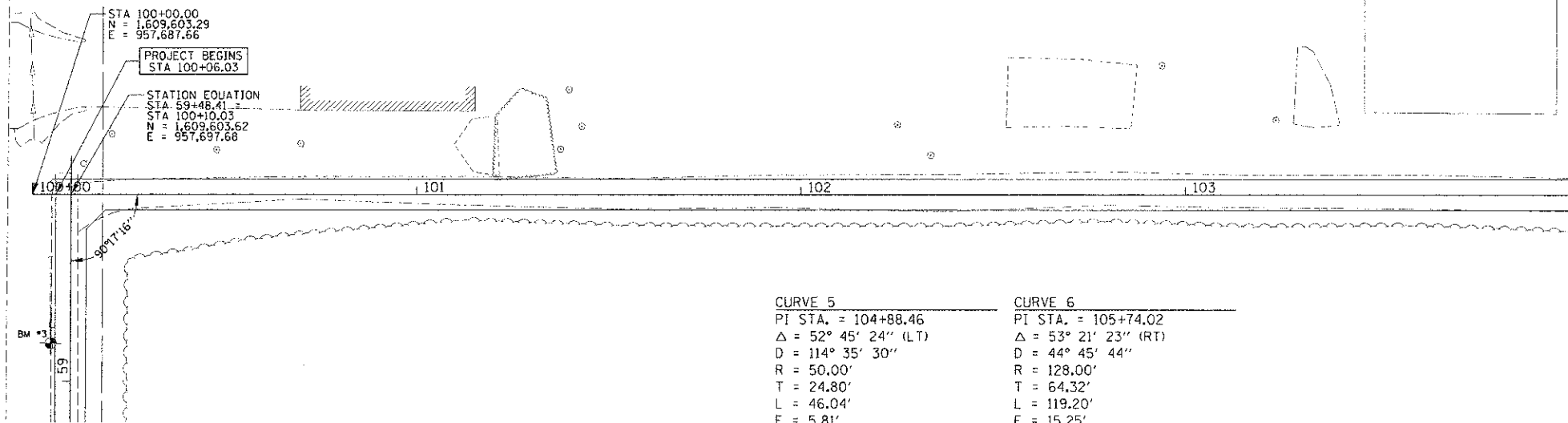
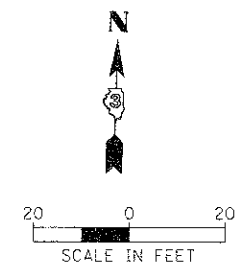


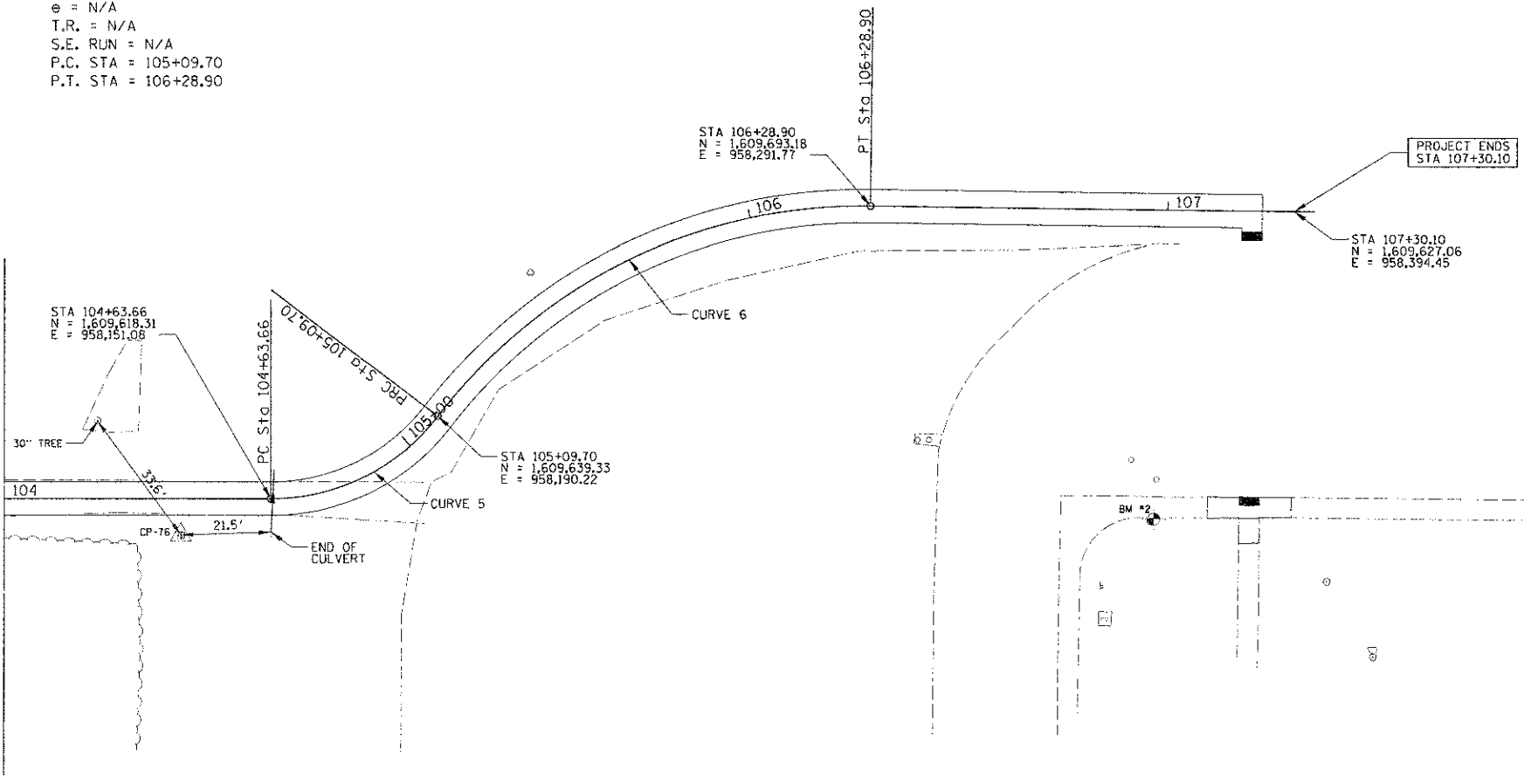
CONTROL POINT	DESCRIPTION	NORTHING	EASTING
75	ROD	1609690.15	958800.75
76	ROD	1609608.98	958129.92
77	NAIL	1609553.90	959060.25
78	ROD	1609515.51	957630.94
79	ROD	1608697.56	957669.04
80	ROD	1609499.40	957194.16

ELEVATION BENCHMARKS DATUM: NAVD 88		
NO.	DESCRIPTION	ELEV.
BM 1	CHISELED SQUARE LOCATED ON SIDEWALK ON WEST SIDE OF FRANKLIN STREET AT THE END OF FRANKLIN STREET AT ENTRANCE TO THE HIGH SCHOOL.	635.80
BM 2	CHISELED "X" ON NORTH CAP BOLT OF FIRE HYDRANT LOCATED NEAR THE NORTHWEST CORNER OF THE SCHOOL BUILDING.	637.47
BM 3	RAILROAD SPIKE IN POWER POLE LOCATED ON THE EAST SIDE OF COLUMBIA STREET JUST NORTH OF THE NORTH ENTRANCE TO THE GRADE SCHOOL.	635.70
BM 4	RAILROAD SPIKE IN POWER POLE LOCATED ON THE WEST SIDE OF COLUMBIA STREET SOUTH OF THE INTERSECTION OF TROJAN DRIVE.	639.21
BM 5	RAILROAD SPIKE IN POWER POLE LOCATED IN THE NORTHEAST QUADRANT OF THE INTERSECTION OF COLUMBIA STREET AND KAREN DRIVE.	640.16
BM 6	MAG NAIL IN ASPHALT LOCATED IN THE GRADE SCHOOLS NORTH DRIVE EAST OF THE INTERSECTION OF THE GRADE SCHOOL DRIVE AND WASHINGTON STREET	633.58



CURVE 5	CURVE 6
PI STA. = 104+88.46	PI STA. = 105+74.02
Δ = 52° 45' 24" (LT)	Δ = 53° 21' 23" (RT)
D = 114° 35' 30"	D = 44° 45' 44"
R = 50.00'	R = 128.00'
T = 24.80'	T = 64.32'
L = 46.04'	L = 119.20'
E = 5.81'	E = 15.25'
θ = N/A	θ = N/A
T.R. = N/A	T.R. = N/A
S.E. RUN = N/A	S.E. RUN = N/A
P.C. STA = 104+63.66	P.C. STA = 105+09.70
P.T. STA = 105+09.70	P.T. STA = 106+28.90

MATCHLINE STA 105 + 00



FILE NAME: X:\dough\B923926\032\PC\1\BIB14-R02.DWG	USER NAME: DMCCOLLON	DESIGNED: CJM	REVISED: -	STATE OF ILLINOIS DEPARTMENT OF TRANSPORTATION	ALIGNMENT, TIES, AND BENCHMARKS HIGH SCHOOL PROPERTY	F.A. RTE.:	SECTION:	COUNTY:	TOTAL SHEETS:	SHEET NO.:
	PLOT SCALE: 1"=20'	DRAWN: CJM	REVISED: -			12-00051-00-SW	LIVINGSTON	40	9	
	DATE: 2/7/2013	CHECKED: REH	REVISED: -			SCALE:	SHEET NO. 4 OF 6 SHEETS	STA. 100+06.03 TO STA. 107+30.10	ILLINOIS FED. AID PROJECT	
	DATE: 02/08/13	DATE: 02/08/13	REVISED: -						CONTRACT NO. 87547	