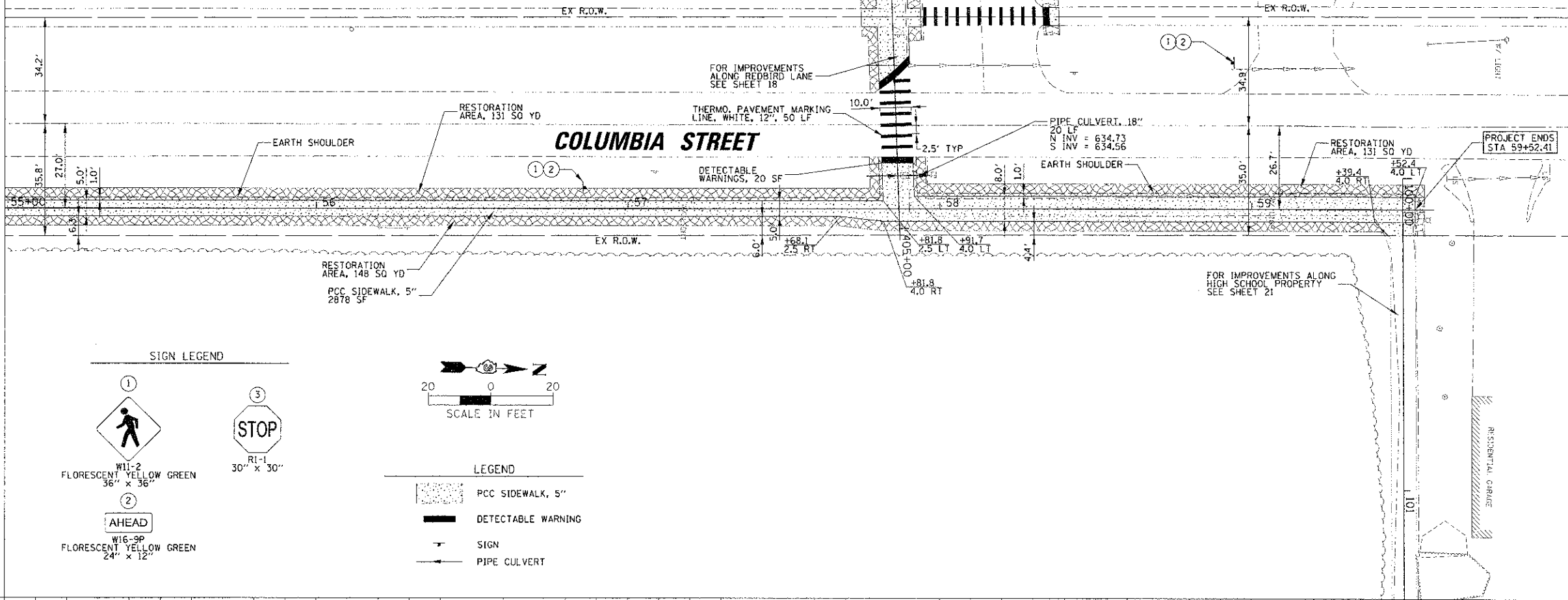


NOTE:
ALL ADVANCED WARNING PEDESTRIAN SIGNS
SHALL BE PLACED 100' FEET IN FRONT OF
THE LEADING EDGE OF THE CROSS WALK

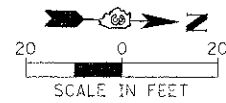
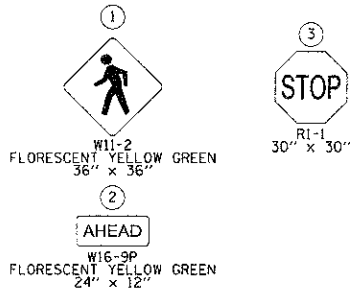
DATE	5/7	
BY	SV	
REVISIONS		
NO.	DESCRIPTION	DATE
1	REVISED	
2	REVISED	
3	REVISED	
4	REVISED	
5	REVISED	
6	REVISED	
7	REVISED	
8	REVISED	
9	REVISED	
10	REVISED	

DATE	5/7	
BY	SV	
REVISIONS		
NO.	DESCRIPTION	DATE
1	REVISED	
2	REVISED	
3	REVISED	
4	REVISED	
5	REVISED	
6	REVISED	
7	REVISED	
8	REVISED	
9	REVISED	
10	REVISED	

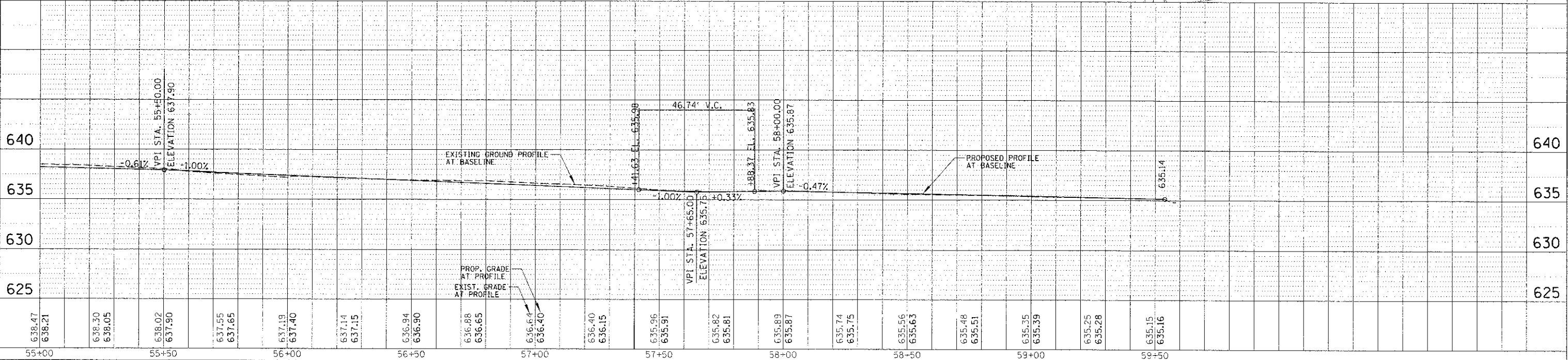
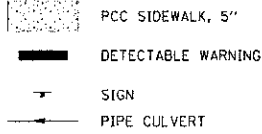
MATCHLINE STA 55+00



SIGN LEGEND



LEGEND



FILE NAME X:\D:\gpr\1209080224\civil\120908\120908.dgn	USER NAME C:\CCO\COM	DESIGNED - CJM	REVISED -	STATE OF ILLINOIS DEPARTMENT OF TRANSPORTATION	PLAN AND PROFILE COLUMBIA STREET	P.A. RTE.	SECTION	COUNTY	TOTAL SHEETS	SHEET NO.	
PLT SCALE = 20'	CHECKED - REH	REVISED -	SCALE: 20'			SHEET NO. 4 OF 8 SHEETS	STA. 55+00.00 TO STA. 59+48.41	12-00051-00-SW	LIVINGSTON	40	20
PLT DATE = 2/7/2013	DATE - 02/08/13	REVISED -				CONTRACT NO. 87547	ILLINOIS FED. AID PROJECT				