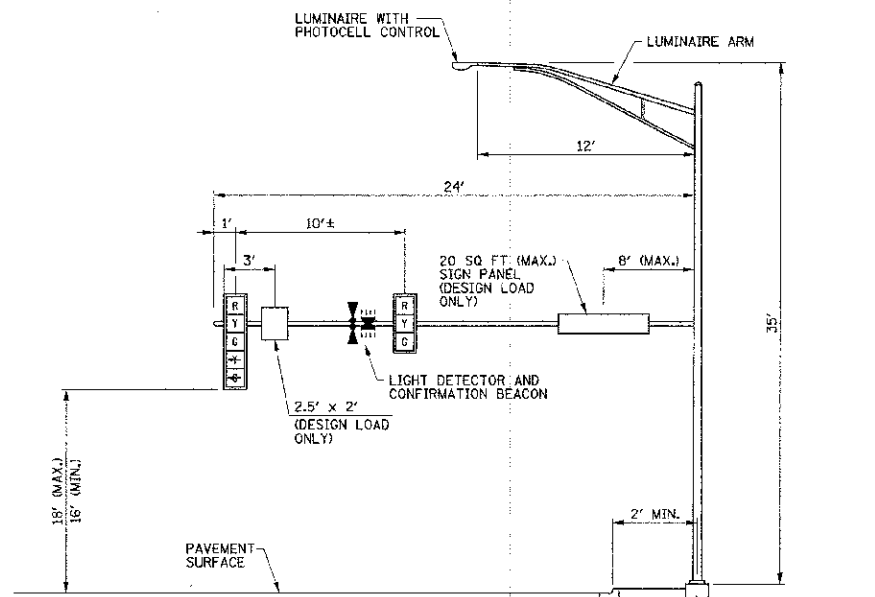


MAST ARM LOADING DIAGRAM

MAIN STREET & RACE STREET
NORTHWEST QUADRANT (LOOKING WEST)
MAST ARM NO. P5

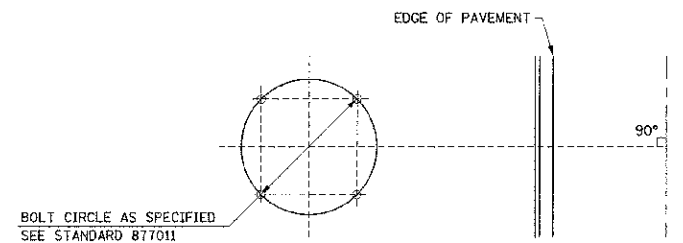
TYPE E FOUNDATION
DIAMETER = 30"
DEPTH BELOW FINISHED
GRADE LINE = 13.5'



MAST ARM LOADING DIAGRAM

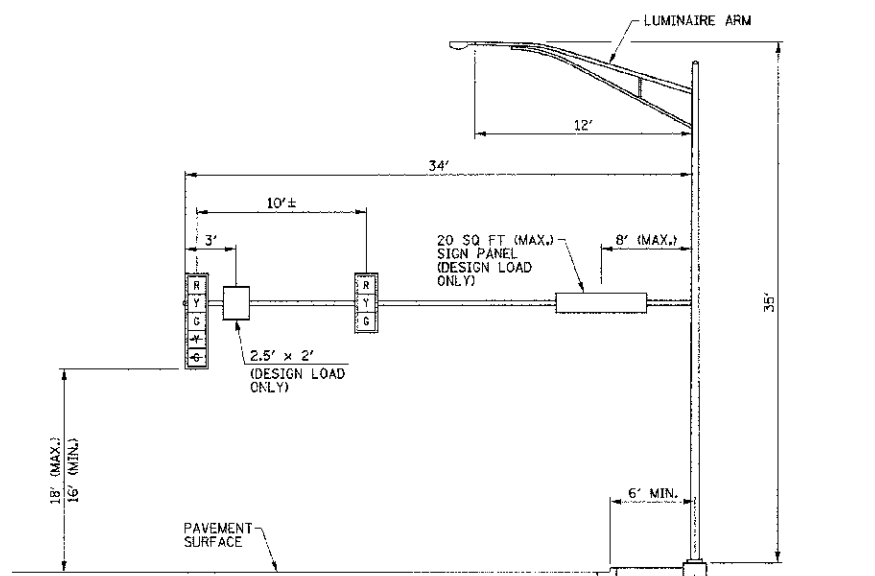
MAIN STREET & RACE STREET
NORTHEAST QUADRANT (LOOKING NORTH)
MAST ARM NO. P11

TYPE E FOUNDATION
DIAMETER = 30"
DEPTH BELOW FINISHED
GRADE LINE = 13.5'



MAST ARM FOUNDATION BOLT PATTERN DETAIL

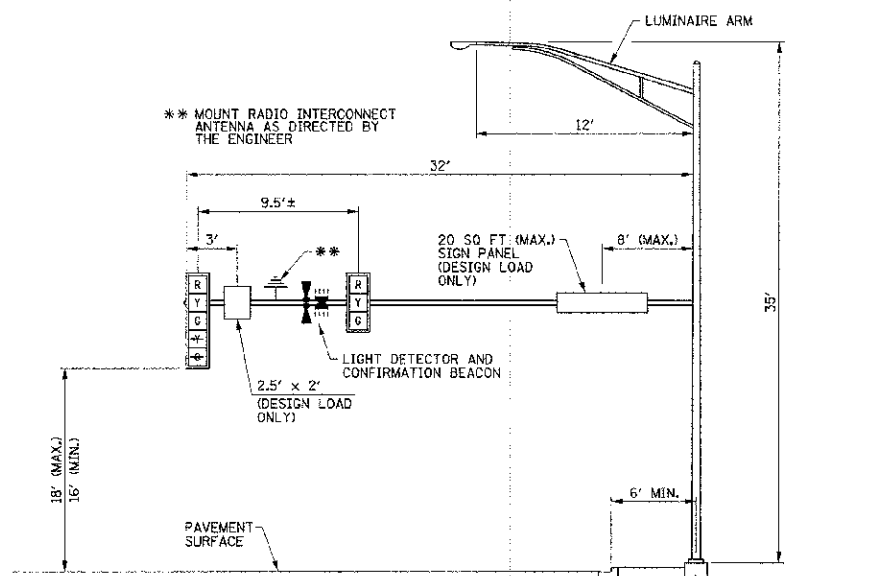
ORIENTATION OF ANCHOR BOLTS TO BE FIELD VERIFIED



MAST ARM LOADING DIAGRAM

MAIN STREET & RACE STREET
SOUTHWEST QUADRANT (LOOKING SOUTH)
MAST ARM NO. P1

TYPE E FOUNDATION
DIAMETER = 30"
DEPTH BELOW FINISHED
GRADE LINE = 13.5'



MAST ARM LOADING DIAGRAM

MAIN STREET & RACE STREET
SOUTHEAST QUADRANT (LOOKING EAST)
MAST ARM NO. P7

TYPE E FOUNDATION
DIAMETER = 30"
DEPTH BELOW FINISHED
GRADE LINE = 13.5'

FILE NAME = p:\U0370061_Urbana - Main Street HSI\Plans\Sheets\09 traffic signals.dgn
PLOT DATE = 1/15/2013 9:06:19 PM

DESIGNED - JAJ	REVISED -
DRAWN - KLR	REVISED -
CHECKED - SMW	REVISED -
DATE - 01/2013	REVISED -

STATE OF ILLINOIS
DEPARTMENT OF TRANSPORTATION

MAIN STREET & RACE STREET
TRAFFIC SIGNAL PLANS
TRAFFIC SIGNAL DETAILS

SCALE : NONE SHEET NO. 11 OF 12 SHEETS STA. TO STA.

F.A.J. RTE.	SECTION	COUNTY	TOTAL SHEETS	SHEET NO.
7124	11-00510-00-TL	CHAMPAIGN	12	11
MAIN STREET		CONTRACT NO. 91481		
FED. ROAD DIST. NO.		ILLINOIS FED. AID PROJECT		