

INDEX OF SHEETS

SHEET NO.	DESCRIPTION
1	TITLE SHEET
2	GENERAL NOTES
3	HIGHWAY STANDARDS AND LEGEND
4	SUMMARY OF QUANTITIES
5	HORIZONTAL ALIGNMENT LAYOUT AND CONTROL
6	REMOVAL PLANS
7	ROADWAY PLANS
8-12	TRAFFIC SIGNAL PLANS

04-26-13 LETTING ITEM 101

STATE OF ILLINOIS
DEPARTMENT OF TRANSPORTATION
DIVISION OF HIGHWAYS

**PLANS FOR PROPOSED
STREET IMPROVEMENTS**

PLAN 1 INCH = 20 FEET
PROFILE HORIZ. 1 INCH = 20 FEET
PROFILE VERT. 1 INCH = 5 FEET
CROSS SECTIONS HORIZ. 1 INCH = 5 FEET
CROSS SECTIONS VERT. 1 INCH = 5 FEET

CITY OF URBANA
CHAMPAIGN COUNTY, ILLINOIS

SECTION: 11-00510-00-TL

PROJECT NO. HSIP-5181(051)

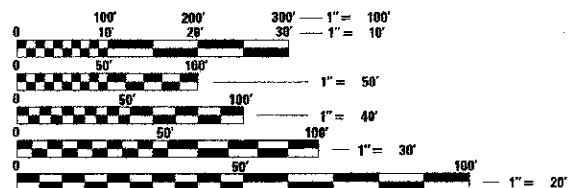
JOB NO. C-95-341-12

HIGHWAY SAFETY IMPROVEMENT PROGRAM

**MAIN STREET – F.A.U. ROUTE 7124
TRAFFIC SIGNAL MODERNIZATION AT RACE STREET**

ILLINOIS HIGHWAY STANDARD DRAWINGS
(SEE SHEET NO. 3)

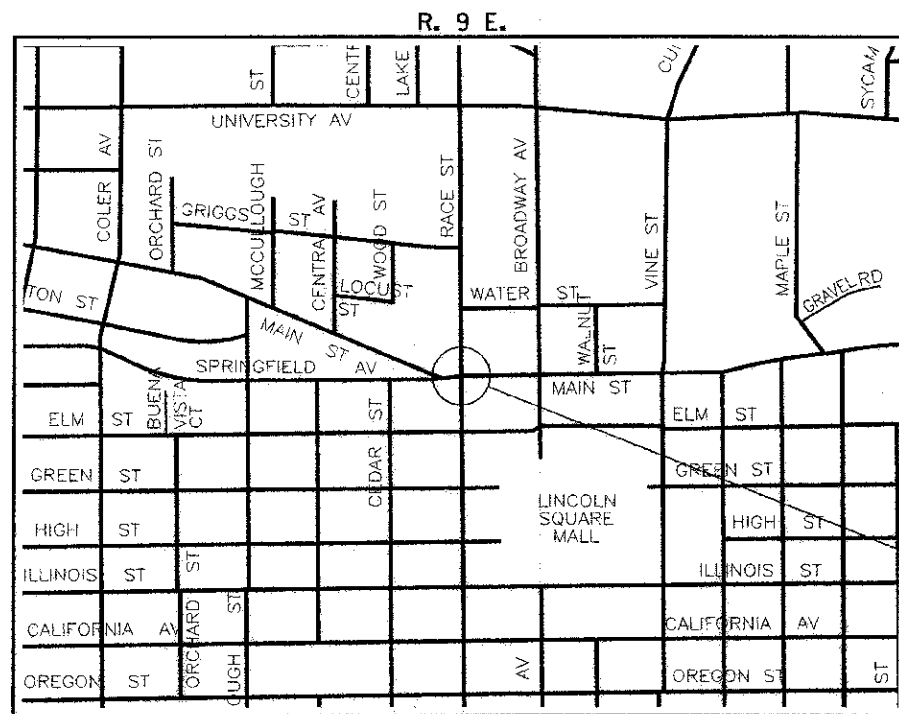
FAU ROUTE 7124 (MAIN STREET) = MINOR ARTERIAL
ADT = 9,000 (2013) & 9,900 (2033)
FAU ROUTE 7181 (RACE STREET) = COLLECTOR
ADT = 5,100 (2013) & 5,600 (2033)



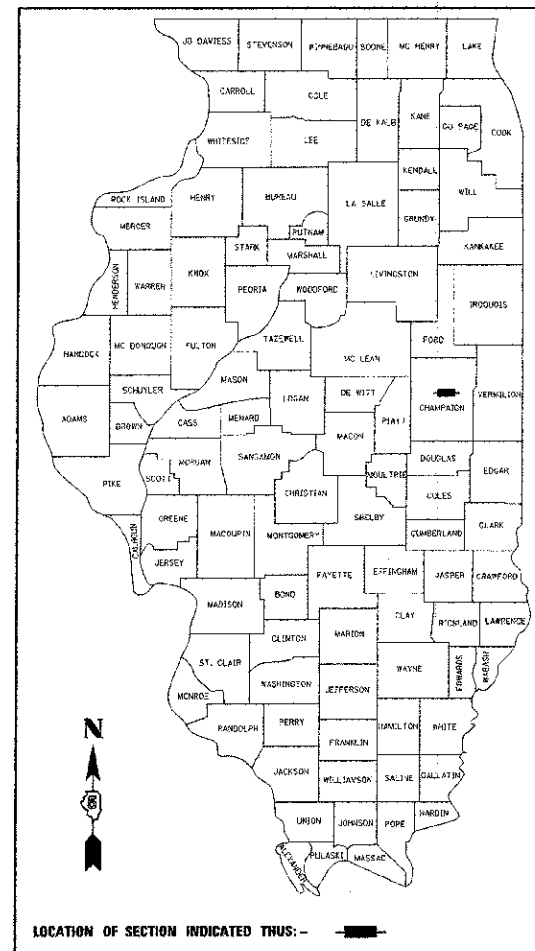
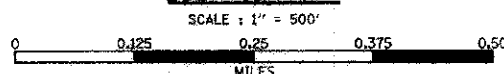
FULL SIZE PLANS HAVE BEEN PREPARED USING STANDARD ENGINEERING SCALES. REDUCED SIZED PLANS WILL NOT CONFORM TO STANDARD SCALES. IN MAKING MEASUREMENTS ON REDUCED PLANS, THE ABOVE SCALES MAY BE USED.

J.U.L.I.E.
JOINT UTILITY LOCATION INFORMATION FOR EXCAVATION
1-800-892-0123 OR 811

CONTRACT NO. 91481



LOCATION MAP



LICENSE EXPIRES
11/30/13

CITY OF URBANA

APPROVED: 1/15 2013
Whelan R. Gray
DIRECTOR OF PUBLIC WORKS

PASSED: 2-4 2013
Scott A. Lachner, P.E.
DISTRICT FIVE ENGINEER OF LOCAL ROADS & STREETS

Releasing For Bid Based on Limited Review: 02-04 2013
William A. Jones, P.E.
DEPUTY DIRECTOR OF HIGHWAYS, REGION THREE ENGINEER

STATE OF ILLINOIS
DEPARTMENT OF TRANSPORTATION



PROFESSIONAL ENGINEER
CLARK DIETZ, INC.
DATE: 01/15/2013
LICENSE EXPIRES 11-30-2013

**PRINTED BY THE AUTHORITY
OF THE STATE OF ILLINOIS**

Clark Dietz
ENGINEERS
125 WEST CHURCH STREET
CHAMPAIGN, IL 61820
PHONE: 217.373.8100
FAX: 217.373.8223

GENERAL NOTES

GENERAL

- ALL ELEVATIONS SHOWN ARE REFERRED TO THE N.A.V.D. 1988 DATUM.
- WHEREVER IN THE PLANS OR SPECIFICATIONS THE TERM "STANDARD SPECIFICATIONS" IS USED IT SHALL BE UNDERSTOOD BY THE CONTRACTOR TO MEAN THE "STANDARD SPECIFICATIONS FOR ROAD AND BRIDGE CONSTRUCTION" AS PREPARED BY THE DEPARTMENT OF TRANSPORTATION OF THE STATE OF ILLINOIS AND ADOPTED ON JANUARY 1, 2012.
- WHEREVER IN THE PLANS OR SPECIFICATIONS THE TERMS "STANDARD SPECIFICATIONS FOR WATER MAIN CONSTRUCTION" OR "STANDARD SPECIFICATIONS FOR SEWER CONSTRUCTION" ARE USED IT SHALL BE UNDERSTOOD BY THE CONTRACTOR TO MEAN THE "STANDARD SPECIFICATIONS FOR WATER AND SEWER CONSTRUCTION IN ILLINOIS" AS PREPARED BY ISPE, UCA, APWA, ASCE, AND IML AND ADOPTED IN JULY 2009.
- ANY REFERENCE TO STANDARDS THROUGHOUT THE PLANS SHALL BE INTERPRETED TO BE THE LATEST STANDARDS OF THE DEPARTMENT AS SHOWN ON THE HIGHWAY STANDARDS AND LEGEND SHEET NO. 3.
- IT IS THE CONTRACTOR'S RESPONSIBILITY TO ASCERTAIN EXISTING FIELD CONDITIONS BEFORE BIDDING ON THE PROJECT.
- THE CONTRACTOR SHALL BE REQUIRED TO COMPLY WITH STATE REGULATIONS REGARDING AIR, WATER, AND NOISE POLLUTION.
- THE CONTRACTOR SHALL TAKE CARE NOT TO STORE OR DISPOSE OF DEBRIS OR UNSUITABLE MATERIALS WITHIN THE LIMITS OF THE IMPROVEMENT AND SHALL TAKE CARE TO LIMIT CONSTRUCTION ACTIVITIES TO WITHIN THE RIGHT-OF-WAY AND EASEMENT AREAS. UNNECESSARY ENCROACHMENTS ONTO PRIVATE OR PUBLIC AREAS WILL NOT BE ALLOWED.
- WHERE SECTION OR SUBSECTION MONUMENTS, BENCHMARKS, OR IRON PIPE MONUMENTS ARE ENCOUNTERED, THE ENGINEER SHALL BE NOTIFIED BEFORE SUCH MONUMENTS ARE REMOVED. THE CONTRACTOR SHALL PROTECT AND CAREFULLY PRESERVE ALL MONUMENTS UNTIL AN ILLINOIS REGISTERED LAND SURVEYOR OR AGENT HAS WITNESSED OR OTHERWISE REFERENCED THEIR LOCATION. THE CONTRACTOR SHALL BE RESPONSIBLE FOR HAVING AN ILLINOIS REGISTERED LAND SURVEYOR REESTABLISH ANY MONUMENTS UNNECESSARILY DESTROYED BY HIS OR HER OPERATIONS. THIS WORK WILL NOT BE PAID FOR SEPARATELY BUT SHALL BE INCLUDED IN THE COST OF CONSTRUCTION LAYOUT, AND NO ADDITIONAL COMPENSATION WILL BE ALLOWED.
- ALL STREET RETURNS HAVE RADII DESIGNATED TO THE EDGE OF PAVEMENT UNLESS OTHERWISE NOTED ON THE PLANS.
- THE EXCAVATION FOR THIS PROJECT IS CLASSIFIED AS EARTH EXCAVATION IN ACCORDANCE WITH SECTION 202 OF THE STANDARD SPECIFICATIONS AND AS PROVIDED IN THE SPECIAL PROVISIONS. THE EARTH EXCAVATION SHALL INCLUDE THE REMOVAL OF EARTH AND UNCLASSIFIED MATERIALS. THE CONTRACTOR SHALL NOTIFY ALL UTILITY COMPANIES AND AGENCIES PRIOR TO EXCAVATION OPERATIONS. EARTH EXCAVATION WILL NOT BE MEASURED FOR PAYMENT BUT SHALL BE INCLUDED IN THE COST OF THE SPECIFIC CONSTRUCTION PAY ITEM REQUIRING THE EXCAVATION, AND NO ADDITIONAL COMPENSATION WILL BE ALLOWED. THE REMAINING EXCAVATION IS CLASSIFIED AS PAVEMENT REMOVAL, COMBINATION CURB AND GUTTER REMOVAL, CURB REMOVAL, AND SIDEWALK REMOVAL.
- THE EXISTING TRAFFIC SIGNS AND POSTS WHICH INTERFERE WITH THE CONSTRUCTION SHALL BE REMOVED AND RESET, AS THE CASE MAY BE, AS DIRECTED BY THE ENGINEER. THIS WORK SHALL BE PERFORMED IN ACCORDANCE WITH ARTICLE 107.25 OF THE STANDARD SPECIFICATIONS. EXISTING SIGNS THAT WILL NOT BE RESET SHALL BE RETURNED TO THE CITY OF URBANA'S PUBLIC WORKS GARAGE AT 706 SOUTH GLOVER AVENUE. REFER TO THE SPECIAL PROVISION FOR "TRAFFIC CONTROL AND PROTECTION (SPECIAL)" FOR ADDITIONAL INFORMATION ON REMOVING AND RESETTING THE EXISTING TRAFFIC SIGNS AND POSTS. REMOVING AND RESETTING THE EXISTING TRAFFIC SIGNS AND POSTS WILL NOT BE MEASURED FOR PAYMENT BUT SHALL BE INCLUDED IN THE COST OF THE VARIOUS REMOVAL PAY ITEMS, AND NO ADDITIONAL COMPENSATION WILL BE ALLOWED.
- THE FOLLOWING RATES OF APPLICATION HAVE BEEN ASSUMED IN CALCULATING PLAN QUANTITIES:
AGGREGATE MATERIALS - 2.05 TON/CU YD
- UTILITY LOCATIONS WERE PLOTTED FROM INFORMATION FURNISHED BY THE VARIOUS UTILITY COMPANIES, AND THEIR ACCURACY SHOULD BE CONSIDERED APPROXIMATE. NO RESPONSIBILITY IS ACCEPTED FOR THE UTILITY LOCATIONS AS SHOWN OR THAT ALL UTILITY FACILITIES ARE SHOWN. THE UTILITY LOCATIONS SHOWN IN THE PLANS ARE APPROXIMATE AND REPRESENT LOCATIONS PRIOR TO ANY UTILITY RELOCATIONS REQUIRED TO ACCOMMODATE THE PROPOSED CONSTRUCTION. THE CONTRACTOR IS ADVISED THAT SOME UTILITY COMPANIES MAY HAVE RELOCATED THEIR FACILITIES PRIOR TO THE START OF CONSTRUCTION UNDER THIS CONTRACT. BEFORE COMMENCING CONSTRUCTION OPERATIONS, THE CONTRACTOR SHALL OBTAIN FROM THE ENGINEER ANY AVAILABLE INFORMATION REGARDING THE RELOCATED POSITIONS OF UTILITIES WITHIN THE PROJECT LIMITS. WHETHER VARIOUS UTILITIES HAVE BEEN RELOCATED OR REMAIN IN THEIR ORIGINAL LOCATION, IT SHALL BE THE RESPONSIBILITY OF THE CONTRACTOR TO DETERMINE THEIR EXACT LOCATION AT THE TIME OF CONSTRUCTION AND TO PROTECT SAME. THE CONTRACTOR SHALL ALSO BE RESPONSIBLE FOR AVOIDING CONFLICTS BETWEEN OVERHEAD UTILITY LINES AND THE EQUIPMENT USED DURING CONSTRUCTION. REFER TO THE "STATUS OF UTILITIES" SHEET WITHIN THE SPECIAL PROVISIONS FOR ADDITIONAL INFORMATION REGARDING KNOWN UTILITY RELOCATIONS OR ADJUSTMENTS REQUIRED FOR THE PROPOSED CONSTRUCTION. THE CONTRACTOR'S ATTENTION IS DIRECTED TO THE SPECIAL PROVISION ENTITLED "COOPERATION WITH UTILITIES" AND ARTICLE 107.31 OF THE STANDARD SPECIFICATIONS.
- THE CONTRACTOR SHALL COORDINATE CONSTRUCTION ACTIVITIES WITH THE UTILITY COMPANIES.
- THE CONTRACTOR SHALL BE RESPONSIBLE FOR PROTECTING UTILITY PROPERTY FROM CONSTRUCTION OPERATIONS AS OUTLINED IN ARTICLE 107.31 OF THE STANDARD SPECIFICATIONS. THE JULIE NUMBER IS 800-892-0123.
- UTILITY OWNERS:
*INDICATES JULIE MEMBER
*AMEREN IP
1112 WEST ANTHONY DRIVE
URBANA, ILLINOIS 61803
(217) 383-7280
*COMCAST
303 FAIRLAWN DRIVE
URBANA, ILLINOIS 61801
(217) 383-8031
*WINDSTREAM
102 EAST SHAFER STREET
FORSYTH, ILLINOIS 62535
(217) 876-7194
*URBANA & CHAMPAIGN SANITARY DISTRICT
1100 EAST UNIVERSITY AVENUE
URBANA, ILLINOIS 61803
(217) 367-3409
*AT&T
201 SOUTH NEIL STREET
CHAMPAIGN, ILLINOIS 61820
(217) 398-7980
*ILLINOIS AMERICAN
201 DEVONSHIRE DRIVE
CHAMPAIGN, ILLINOIS 61820
(217) 373-3258
*UC2B
URBANA CHAMPAIGN B16 BROADBAND
217-366-UC2B (8222)
*CITY OF URBANA PUBLIC WORKS
706 SOUTH GLOVER AVENUE
URBANA, ILLINOIS 61802
(217) 384-2385
- ABANDONED UNDERGROUND UTILITIES THAT CONFLICT WITH CONSTRUCTION SHALL BE REMOVED AND DISPOSED OF OUTSIDE THE LIMITS OF THE RIGHT-OF-WAY ACCORDING TO ARTICLE 202.03 OF THE STANDARD SPECIFICATIONS AND AS APPROVED BY THE ENGINEER. THIS WORK WILL NOT BE PAID FOR SEPARATELY BUT SHALL BE INCLUDED IN THE COST OF THE VARIOUS REMOVAL PAY ITEMS, AND NO ADDITIONAL COMPENSATION WILL BE ALLOWED.
- EXISTING PAVEMENTS, CURBS AND GUTTERS, AND SIDEWALKS IN WHICH THE TOP SURFACE IS TO BE JOINED TO THE PROPOSED WORK SHALL BE SO JOINED THROUGH SAW CUT JUNCTURES. 3/4" EXPANSION JOINT MATERIAL SHALL BE PLACED AT THESE JUNCTURES AS DIRECTED BY THE ENGINEER. THIS WORK SHALL BE INCLUDED IN THE COST OF THE PROPOSED PAVEMENT, CURB AND GUTTER, OR SIDEWALK, AND NO ADDITIONAL COMPENSATION WILL BE ALLOWED.
- ALL EXPANSION JOINTS IN THE SIDEWALK SHALL BE SEALED. THE JOINT SEALANT SHALL BE SONOLASTIC NP-1 OR SL-1 ELASTOMERIC JOINT SEALANT MANUFACTURED BY SONNEBORN OR AN EQUIVALENT APPROVED ELASTOMERIC SEALANT. EXPANSION JOINTS SHALL BE SEALED TO WITHIN 1/4" OF THE FINISHED SURFACE. EXPANSION JOINTS SHALL BE USED BETWEEN THE CURB AND GUTTER AND THE SIDEWALK. EXPANSION JOINTS SHALL BE USED AT OTHER LOCATIONS AS DIRECTED BY THE ENGINEER. SEE THE STANDARD SPECIFICATIONS FOR ADDITIONAL SIDEWALK JOINT INFORMATION.
- HORIZONTAL CONTROL TIES ARE SHOWN FOR THE CONTRACTOR TO PHYSICALLY LOCATE MONUMENTATION IN THE FIELD. IT IS THE CONTRACTOR'S RESPONSIBILITY TO MAINTAIN CONTROL POINTS OR TO USE ADDITIONAL TIES AS NECESSARY TO INSURE THAT CONTROL POINTS CAN BE ACCURATELY REPLICATED DURING CONSTRUCTION.
- THE CONTRACTOR SHALL BE RESPONSIBLE FOR CLEANUP OF THE SITE PRIOR TO FINAL ACCEPTANCE IN ACCORDANCE WITH ARTICLE 104.06 OF THE STANDARD SPECIFICATIONS. THIS WORK SHALL ALSO INCLUDE CLEANING ALL DRAINAGE FACILITIES OF FOREIGN MATERIALS IN ACCORDANCE WITH ARTICLE 602.15 OF THE STANDARD SPECIFICATIONS. THIS WORK SHALL BE PERFORMED AS DIRECTED BY THE ENGINEER, AND NO ADDITIONAL COMPENSATION WILL BE ALLOWED.
- ALL OPEN TRENCHES OR EXCAVATIONS SHALL BE PROTECTED WITH A SIX-FOOT HIGH CHAIN LINK FENCE AS DIRECTED BY THE ENGINEER. THIS WORK WILL NOT BE PAID FOR SEPARATELY BUT SHALL BE INCLUDED IN THE COST OF THE VARIOUS REMOVAL PAY ITEMS, AND NO ADDITIONAL COMPENSATION WILL BE ALLOWED.
- THE HORIZONTAL COORDINATE SYSTEM IS BASED ON A GPS CALIBRATION OF CITY OF URBANA HORIZONTAL CONTROL POINTS.
- THE IMPROVEMENTS ALONG MAIN STREET BETWEEN CEDAR STREET AND VINE STREET WILL BE PERFORMED UNDER A SEPARATE PROJECT. THE CONTRACTOR SHALL COORDINATE THE REMOVAL, ROADWAY, AND TRAFFIC SIGNAL ITEMS ON THIS PROJECT WITH THE MAIN STREET IMPROVEMENTS PERFORMED UNDER THE SEPARATE PROJECT AS DIRECTED BY THE ENGINEER, AND NO ADDITIONAL COMPENSATION WILL BE ALLOWED.

EROSION CONTROL

- THE TEMPORARY EROSION CONTROL SYSTEMS REQUIRED ALONG MAIN STREET WILL BE INSTALLED AND MAINTAINED UNDER A SEPARATE PROJECT.
- ADDITIONAL TEMPORARY EROSION CONTROL SYSTEMS MAY BE REQUIRED FOR THE TRAFFIC SIGNAL MODERNIZATION PERFORMED UNDER THIS PROJECT. THE SYSTEMS SHALL BE PLACED AS DIRECTED BY THE ENGINEER AND SHALL BE PAID FOR IN ACCORDANCE WITH SECTION 280 OF THE STANDARD SPECIFICATIONS. THE SYSTEMS SHALL BE MAINTAINED UNTIL SUCH TIME THAT THEY CAN BE REMOVED AS DIRECTED BY THE ENGINEER.

- SODDING AND LANDSCAPING OF DISTURBED EARTH AREAS ALONG MAIN STREET WILL BE PERFORMED UNDER A SEPARATE PROJECT. ALL TURF AREAS THAT ARE DAMAGED DURING THE TRAFFIC SIGNAL MODERNIZATION SHALL BE REPLACED WITH SOG AS DIRECTED BY THE ENGINEER AND AT THE CONTRACTOR'S EXPENSE.

TRAFFIC CONTROL

- PRIOR TO THE START OF CONSTRUCTION OPERATIONS, THE CONTRACTOR SHALL SUBMIT A TRAFFIC CONTROL PLAN AND SEQUENCE OF CONSTRUCTION OPERATIONS TO THE ENGINEER FOR APPROVAL. THE CONTRACTOR SHALL MAINTAIN PEDESTRIAN ACCESS TO ALL BUSINESSES WITHIN THE PROJECT LIMITS AT ALL TIMES DURING CONSTRUCTION. THE CONTRACTOR'S TRAFFIC CONTROL PLAN AND SEQUENCE OF CONSTRUCTION OPERATIONS SHALL INCLUDE THIS REQUIREMENT.
- NO DEVIATIONS FROM THE APPROVED TRAFFIC CONTROL PLAN WILL BE ALLOWED WITHOUT WRITTEN AUTHORIZATION FROM THE ENGINEER.
- ONE LANE OF TRAFFIC SHALL BE MAINTAINED IN EACH DIRECTION ON MAIN STREET AND ON RACE STREET EXCEPT AS OTHERWISE DIRECTED BY THE ENGINEER.
- TRAFFIC CONTROL AND PROTECTION SHALL BE IN ACCORDANCE WITH THE APPLICABLE PORTIONS OF THE STANDARD SPECIFICATIONS FOR ROAD AND BRIDGE CONSTRUCTION; THE APPLICABLE GUIDELINES CONTAINED IN THE MANUAL ON UNIFORM TRAFFIC CONTROL DEVICES FOR STREETS AND HIGHWAYS; STANDARDS 701301, 701701, 701801, AND 701901; THE TRAFFIC CONTROL NOTES; AND THE SPECIAL PROVISIONS. DELETE ALL REFERENCES TO MEASUREMENT AND PAYMENT.
- THE FOLLOWING TRAFFIC CONTROL STANDARDS ARE THE MINIMUM REQUIREMENTS FOR THE TRAFFIC CONTROL FOR THIS PROJECT WHEN LANES ARE OPEN TO TRAFFIC:

STANDARD	APPLICATION
701301	SHORT TIME LANE CLOSURE ON VARIOUS STREETS FOR CONSTRUCTION LAYOUT, DEBRIS CLEANUP, ETC.
701701	LANE CLOSURE ON VARIOUS STREETS FOR INTERSECTION SHOULDER OPERATIONS, CORNER ISLAND OPERATIONS, LEFT-LANE OPERATIONS, ETC.
701801	SIDEWALK CLOSURES WITHIN PROJECT LIMITS
701901	TRAFFIC CONTROL DEVICES
- TRAFFIC CONTROL AND PROTECTION WILL BE PAID FOR AT THE CONTRACT LUMP SUM PRICE FOR TRAFFIC CONTROL AND PROTECTION (SPECIAL). THE TRAFFIC CONTROL AND PROTECTION INSTALLATION FOR EACH WORK AREA WILL NOT BE PAID FOR SEPARATELY, BUT SHALL BE INCLUDED IN THE LUMP SUM PRICE FOR THIS ITEM. ALL ADDITIONAL TRAFFIC CONTROL DEVICES AND TRAFFIC CONTROL SIGNS REQUIRED TO MAINTAIN THE TRAFFIC CONTROL OR AS DIRECTED BY THE ENGINEER SHALL BE INCLUDED IN THE LUMP SUM PRICE OF TRAFFIC CONTROL AND PROTECTION (SPECIAL).
- TRAFFIC CONTROL SURVEILLANCE WILL NOT BE PAID FOR SEPARATELY FOR THIS PROJECT. THE CONTRACTOR SHALL BE RESPONSIBLE FOR INSPECTING AND MAINTAINING ALL TRAFFIC CONTROL DEVICES AT ALL TIMES INCLUDING NIGHTTIME, WEEKENDS, AND ANY TIME WORKERS ARE NOT PRESENT. THIS WORK SHALL BE PERFORMED IN ACCORDANCE WITH RECURRING SPECIAL PROVISION LRS3. THE COST OF ALL LABOR AND MATERIALS FOR THE MAINTENANCE OF TRAFFIC CONTROL DEVICES SHALL BE INCLUDED IN THE LUMP SUM PRICE OF TRAFFIC CONTROL AND PROTECTION (SPECIAL).
- THE CONTRACTOR SHALL MAINTAIN AT LEAST ONE POINT OF ACCESS TO EACH PROPERTY IN THE WORK AREA AT ALL TIMES.
- FURNISHING, PLACING, MAINTAINING, AND REMOVING ALL AGGREGATE THAT IS USED TO TEMPORARILY FILL ANY VOIDS OR TO PROVIDE TEMPORARY ACCESS FOR VEHICLES OR PEDESTRIANS WILL BE PAID FOR AT THE CONTRACT UNIT PRICE PER TON FOR AGGREGATE FOR TEMPORARY ACCESS. AN APPROXIMATE QUANTITY OF AGGREGATE FOR THE TEMPORARY ACCESS HAS BEEN INCLUDED FOR THIS WORK.
- THE CONTRACTOR SHALL COVER OR REMOVE ANY EXISTING SIGN THAT CONFLICTS WITH THE TRAFFIC CONTROL PLAN AS DIRECTED BY THE ENGINEER. THE CONTRACTOR SHALL PROVIDE "NO PARKING" SIGNS (R7-1-1218) AT THE INTERSECTION AS DIRECTED BY THE ENGINEER. THE PROPOSED SIGNS SHALL BE INSTALLED IN ACCORDANCE WITH STANDARD 701901 AND AS DIRECTED BY THE ENGINEER. THIS WORK WILL NOT BE PAID FOR SEPARATELY BUT SHALL BE INCLUDED IN THE COST OF TRAFFIC CONTROL AND PROTECTION (SPECIAL), AND NO ADDITIONAL COMPENSATION WILL BE ALLOWED.
- THE CONTRACTOR SHALL PROVIDE AND INSTALL TWO WEIGHTED SAND BAGS ON EACH TYPE II BARRICADE USED (ONE WEIGHTED SAND BAG ACROSS EACH BOTTOM RAIL).
- FOR STABILIZATION, ALL TYPE III BARRICADES SHALL REQUIRE A MINIMUM OF FOUR SAND BAGS PER BARRICADE.
- FLASHING LIGHTS SHALL BE PLACED ON ALL TYPE III BARRICADES IN ACCORDANCE WITH STANDARD 701901 UNLESS OTHERWISE DIRECTED BY THE ENGINEER. STEADY BURN LIGHTS SHALL BE PLACED ON ALL DRUMS AND BARRICADES (EXCEPT FOR TYPE III BARRICADES) IN ACCORDANCE WITH STANDARD 701901 UNLESS OTHERWISE DIRECTED BY THE ENGINEER.
- TRAFFIC CONTROL DEVICES MAY BE ADJUSTED TO FIT FIELD CONDITIONS AS DIRECTED BY THE ENGINEER. ADDITIONAL TRAFFIC CONTROL DEVICES NOT ASSOCIATED WITH ANY TRAFFIC CONTROL STANDARD MAY BE REQUIRED AS DIRECTED BY THE ENGINEER. THE ADDITIONAL TRAFFIC CONTROL DEVICES SHALL BE INCLUDED IN THE LUMP SUM PRICE OF TRAFFIC CONTROL AND PROTECTION (SPECIAL).
- TRAFFIC CONTROL DEVICES SHALL BE REMOVED AS DIRECTED BY THE ENGINEER.
- THE CONTRACTOR SHALL NOTIFY THE CITY OF URBANA OF ALL ROAD CLOSURES AND CHANGES TO THE TRAFFIC CONTROL PLAN A MINIMUM OF 48 HOURS IN ADVANCE OF THE WORK.
- THE CITY OF URBANA WILL BE RESPONSIBLE FOR NOTIFYING THE PUBLIC, THE UNITED STATES POSTAL SERVICE, THE CHAMPAIGN-URBANA MASS TRANSIT DISTRICT, AND THE EMERGENCY SERVICE AGENCIES OF ALL ROAD CLOSURES AND CHANGES TO THE TRAFFIC CONTROL PLAN.
- FOR SPECIFIC INSTRUCTIONS ON THE INCLUSION OF SIGNS, BARRICADES, AND OTHER TRAFFIC CONTROL DEVICES FOR INDIVIDUAL WORK ZONES, AND THE PLACEMENT THEREOF, REFER TO THE TRAFFIC CONTROL STANDARDS, THE STANDARD SPECIFICATIONS FOR ROAD AND BRIDGE CONSTRUCTION, AND THE SPECIAL PROVISIONS.
- THE INITIAL TRAFFIC CONTROL SETUP AND SUBSEQUENT CHANGES BETWEEN TRAFFIC CONTROL STAGES SHALL BE PERFORMED DURING NON-PEAK TRAFFIC HOURS AS DIRECTED BY THE ENGINEER. FLAGGERS SHALL BE REQUIRED DURING THE INITIAL SETUP AND SUBSEQUENT CHANGES OF THE TRAFFIC CONTROL DEVICES AS DIRECTED BY THE ENGINEER.
- REFER TO THE SPECIAL PROVISIONS FOR ADDITIONAL REQUIREMENTS CONCERNING THE USE OF FLAGGERS.
- THE CONTRACTOR SHALL COORDINATE THE TRAFFIC CONTROL FOR THIS PROJECT WITH THE TRAFFIC CONTROL FOR THE MAIN STREET IMPROVEMENTS BETWEEN CEDAR STREET AND VINE STREET AS DIRECTED BY THE ENGINEER. THIS WORK SHALL BE INCLUDED IN THE LUMP SUM PRICE OF TRAFFIC CONTROL AND PROTECTION (SPECIAL), AND NO ADDITIONAL COMPENSATION WILL BE ALLOWED.
- THE INTERSECTION OF MAIN STREET AND RACE STREET SHALL BE ALL-WAY STOP-CONTROLLED DURING THE CONSTRUCTION OF THE PROPOSED TRAFFIC SIGNAL IMPROVEMENTS AT THE INTERSECTION. THE CONTRACTOR SHALL FURNISH, INSTALL, AND MAINTAIN TEMPORARY "STOP" SIGNS (R1-1-30), "ALL-WAY" SIGNS (R1-4-1806), AND "STOP AHEAD" SIGNS (W3-1-48) ON ALL INTERSECTION APPROACHES AS DIRECTED BY THE ENGINEER. THIS WORK WILL NOT BE PAID FOR SEPARATELY BUT SHALL BE INCLUDED IN THE COST OF TRAFFIC CONTROL AND PROTECTION (SPECIAL), AND NO ADDITIONAL COMPENSATION WILL BE ALLOWED.
- THE DURATION OF THE ALL-WAY STOP-CONTROL SHALL BE KEPT TO A MINIMUM AS DIRECTED BY THE ENGINEER AND THE CITY OF URBANA.
- SEE THE SPECIAL PROVISIONS FOR ADDITIONAL INFORMATION.

FILE NAME = p:\0070081_Urbana - Main Street HSIP\Plans\Sheets\02 general notes.dgn
 PLOT DATE = 1/15/2013 9:06:18 PM

DESIGNED - JAJ	REVISED -
DRAWN - KLR	REVISED -
CHECKED - SMW	REVISED -
DATE - 01/2013	REVISED -

STATE OF ILLINOIS
DEPARTMENT OF TRANSPORTATION

GENERAL NOTES

SCALE : NONE SHEET NO. 2 OF 12 SHEETS STA. TO STA.

F.A.U. R.T.E.	SECTION	COUNTY	TOTAL SHEETS	SHEET NO.
7124	11-00510-00-TL	CHAMPAIGN	12	2
MAIN STREET			CONTRACT NO. 91481	
FED. ROAD DIST. NO.		ILLINOIS	FED. AID PROJECT	

ILLINOIS HIGHWAY STANDARD DRAWINGS

STANDARD NO.	DESCRIPTION
000001-06	STANDARD SYMBOLS, ABBREVIATIONS, AND PATTERNS
280001-07	TEMPORARY EROSION CONTROL SYSTEMS
420001-07	PAVEMENT JOINTS
701301-04	LANE CLOSURE, 2L, 2W, SHORT TIME OPERATIONS
701701-08	URBAN LANE CLOSURE, MULTILANE, INTERSECTION
701801-05	LANE CLOSURE, MULTILANE 1W OR 2W CROSSWALK OR SIDEWALK CLOSURE
701901-02	TRAFFIC CONTROL DEVICES
720001-01	SIGN PANEL MOUNTING DETAILS
720006-03	SIGN PANEL ERECTION DETAILS
805001-01	ELECTRICAL SERVICE INSTALLATION DETAILS
814001-02	HANDHOLES
814006-02	DOUBLE HANDHOLES
857001-01	STANDARD PHASE DESIGNATION DIAGRAMS AND PHASE SEQUENCE
862001-01	UNINTERRUPTIBLE POWER SUPPLY (UPS)
873001-02	TRAFFIC SIGNAL GROUNDING AND BONDING
876001-02	PEDESTRIAN PUSH BUTTON POST
877011-05	STEEL COMBINATION MAST ARM ASSEMBLY AND POLE 16' THROUGH 55'
878001-09	CONCRETE FOUNDATION DETAILS
880006-01	TRAFFIC SIGNAL MOUNTING DETAILS
886001-01	DETECTOR LOOP INSTALLATIONS
886006-01	TYPICAL LAYOUTS FOR DETECTOR LOOPS

LEGEND

EXISTING	PROPOSED	EXISTING	PROPOSED
	WATER LINE		MONUMENT
	IRRIGATION WATER LINE		IRON PIN/PIPE FOUND
	GAS LINE		RIGHT-OF-WAY MARKER
	OVERHEAD ELECTRIC		SOIL BORING
	UNDERGROUND ELECTRIC		PAVEMENT CORE
	OVERHEAD TELEPHONE		TRAFFIC SIGNAL CONTROL BOX
	UNDERGROUND TELEPHONE		TRAFFIC SIGNAL POST
	UNDERGROUND TELEPHONE (FIBER OPTIC)		TRAFFIC SIGNAL MAST ARM
	CABLE TELEVISION		PEDESTRIAN PUSH BUTTON POST
	COMMUNICATION LINE		TRAFFIC SIGNAL HANDHOLE
	FIBER OPTIC LINE		TRAFFIC SIGNAL JUNCTION BOX
	STEAM LINE		RR CROSSING GATE
	FORCE MAIN		RR FLASHING SIGNAL
	SANITARY SEWER		RR CROSSBUCK
	STORM SEWER		STREET SIGN
	STORM SEWER WATER MAIN QUALITY		TRAFFIC SIGN
	INLET OR CATCH BASIN		DELINEATOR
	MANHOLE		PARKING LOT LIGHT
	UTILITY WARNING SIGN		YARD LIGHT
	SERVICE BOX SHUTOFF		MAILBOX
	VALVE		PARKING METER
	WATER MANHOLE		IRRIGATION CONTROL BOX
	WATER METER		IRRIGATION HEAD
	FIRE HYDRANT		TANK FILLER CAP
	GAS METER		INSPECTION WELL
	GAS REGULATOR		CLEANOUT
	GAS VENT PIPE		DOWNSPOUT
	ELECTRIC MANHOLE		BOLLARD
	ELECTRIC METER		FENCE POST
	ELECTRIC PEDESTAL		GATE POST
	ELECTRIC JUNCTION BOX		FLAG POLE
	POWER POLE		FLOOD LIGHT
	POWER POLE W/LIGHT		TREE STUMP
	POWER POLE W/TRANSFORMER		BUSH
	ROADWAY LIGHTING CONTROLLER		CONIFEROUS TREE
	ROADWAY STREET LIGHT		DECIDUOUS TREE
	ORNAMENTAL STREET LIGHT		PROPERTY PARCEL NUMBER
	GUY POLE		HOUSE ADDRESS NUMBER
	GUY WIRE		
	TELEPHONE POLE		
	TELEPHONE MANHOLE		
	TELEPHONE PEDESTAL		
	PEDESTAL PAY PHONE		
	PHONE BOOTH		

FILE NAME = p:\0070061_Urbana - Main Street HSIP\Plans\sheets\03 standards and legend.dgn	DESIGNED - JAJ DRAWN - KLR CHECKED - SWW DATE - 01/2013	REVISED - REVISED - REVISED - REVISED -	STATE OF ILLINOIS DEPARTMENT OF TRANSPORTATION	HIGHWAY STANDARDS AND LEGEND	F.A.U. RTE. 7124 SECTION 11-00510-00-TL COUNTY CHAMPAIGN TOTAL SHEETS 12 SHEET NO. 3	CONTRACT NO. 91481
PILOT DATE = 1/15/2013 9:06:16 PM			SCALE : NONE	SHEET NO. 3 OF 12 SHEETS	STA. TO STA.	FED. ROAD DIST. NO. ILLINOIS FED. AID PROJECT

SUMMARY OF QUANTITIES				CONSTRUCTION CODE		0021	0021
CODE NO.	BASE BID PAY ITEMS	UNIT	TOTAL QUANTITY	ROADWAY	TRAFFIC SIGNALS		
Δ* 40201000	AGGREGATE FOR TEMPORARY ACCESS	TON	6	6			
Δ* 42400300	PORTLAND CEMENT CONCRETE SIDEWALK 6 INCH	SQ FT	164	164			
Δ 44000600	SIDEWALK REMOVAL	SQ FT	164	164			
67100100	MOBILIZATION	L SUM	1	1			
* 81028320	UNDERGROUND CONDUIT, PVC, 1" DIA.	FOOT	49		49		
* 81028340	UNDERGROUND CONDUIT, PVC, 1 1/2" DIA.	FOOT	51		51		
* 81028350	UNDERGROUND CONDUIT, PVC, 2" DIA.	FOOT	106		106		
* 81028360	UNDERGROUND CONDUIT, PVC, 2 1/2" DIA.	FOOT	66		66		
* 81028370	UNDERGROUND CONDUIT, PVC, 3" DIA.	FOOT	65		65		
* 81028390	UNDERGROUND CONDUIT, PVC, 4" DIA.	FOOT	146		146		
* 81028740	UNDERGROUND CONDUIT, COILABLE NONMETALLIC CONDUIT, 1 1/2"	FOOT	360		360		
81400700	HANDHOLE, PORTLAND CEMENT CONCRETE	EACH	3		3		
81400720	DOUBLE HANDHOLE, PORTLAND CEMENT CONCRETE	EACH	1		1		
* 81500120	GULFBOX JUNCTION, COMPOSITE CONCRETE	EACH	6		6		
* 81702110	ELECTRIC CABLE IN CONDUIT, 600V (XLP-TYPE USE) 1/C NO. 10	FOOT	1120		1120		
* 85700200	FULL-ACTUATED CONTROLLER AND TYPE IV CABINET	EACH	1		1		
* 86200200	UNINTERRUPTABLE POWER SUPPLY, STANDARD	EACH	1		1		
* 87301215	ELECTRIC CABLE IN CONDUIT, SIGNAL, NO. 14 2C	FOOT	1300		1300		
* 87301225	ELECTRIC CABLE IN CONDUIT, SIGNAL, NO. 14 3C	FOOT	150		150		
* 87301245	ELECTRIC CABLE IN CONDUIT, SIGNAL, NO. 14 5C	FOOT	710		710		
* 87301255	ELECTRIC CABLE IN CONDUIT, SIGNAL, NO. 14 7C	FOOT	1730		1730		
* 87301515	ELECTRIC CABLE IN CONDUIT, LEAD-IN, NO. 18 3 PAIR	FOOT	1330		1330		
* 87301804	ELECTRIC CABLE IN CONDUIT, SERVICE, NO. 6 1C	FOOT	80		80		
* 87301900	ELECTRIC CABLE IN CONDUIT, EQUIPMENT GROUNDING CONDUCTOR, NO. 6 1C	FOOT	570		570		
* 87500600	TRAFFIC SIGNAL POST, 10 FT.	EACH	3		3		
* 87501000	TRAFFIC SIGNAL POST, 14 FT.	EACH	3		3		
* 87501200	TRAFFIC SIGNAL POST, 16 FT.	EACH	1		1		
* 87600100	PEDESTRIAN PUSH-BUTTON POST, TYPE I	EACH	3		3		
* 87702850	STEEL COMBINATION MAST ARM ASSEMBLY AND POLE 24 FT.	EACH	1		1		
* 87702890	STEEL COMBINATION MAST ARM ASSEMBLY AND POLE 32 FT.	EACH	2		2		
* 87702900	STEEL COMBINATION MAST ARM ASSEMBLY AND POLE 34 FT.	EACH	1		1		
* 87800100	CONCRETE FOUNDATION, TYPE A	FOOT	21		21		
* 87800150	CONCRETE FOUNDATION, TYPE C	FOOT	4		4		
* 87800400	CONCRETE FOUNDATION, TYPE E 30-INCH DIAMETER	FOOT	54		54		
* 88040090	SIGNAL HEAD, POLYCARBONATE, LED, 1-FACE, 3-SECTION, MAST ARM MOUNTED	EACH	4		4		
* 88040160	SIGNAL HEAD, POLYCARBONATE, LED, 1-FACE, 5-SECTION, MAST ARM MOUNTED	EACH	4		4		

* SEE SPECIAL PROVISIONS

SUMMARY OF QUANTITIES				CONSTRUCTION CODE		0021	0021
CODE NO.	BASE BID PAY ITEMS	UNIT	TOTAL QUANTITY	ROADWAY	TRAFFIC SIGNALS		
* 88040260	SIGNAL HEAD, POLYCARBONATE, LED, 2-FACE, 1-3-SECTION, 1-5-SECTION, BRACKET MOUNTED	EACH	4		4		
* 88102825	PEDESTRIAN SIGNAL HEAD, POLYCARBONATE, LED, 1-FACE, BRACKET MOUNTED WITH COUNTDOWN TIMER	EACH	8		8		
88200100	TRAFFIC SIGNAL BACKPLATE	EACH	8		8		
* 88600100	DETECTOR LOOP, TYPE I	FOOT	660		660		
* 88700200	LIGHT DETECTOR	EACH	2		2		
* 88700300	LIGHT DETECTOR AMPLIFIER	EACH	1		1		
* 89502380	REMOVE EXISTING HANDHOLE	EACH	2		2		
* 89502385	REMOVE EXISTING CONCRETE FOUNDATION	EACH	9		9		
* X0321973	MODIFY EXISTING SERVICE INSTALLATION	EACH	1		1		
* X0323713	RADIO INTERCONNECT SYSTEM COMPLETE, LOCAL	EACH	1		1		
* X7010216	TRAFFIC CONTROL AND PROTECTION (SPECIAL)	L SUM	1		1		
* X8250215	PHOTOCELL CONTROL SYSTEM	EACH	1		1		
* X8730250	ELECTRIC CABLE IN CONDUIT NO. 20 3C, TWISTED, SHIELDED	FOOT	280		280		
* X8760200	ACCESSIBLE PEDESTRIAN SIGNALS	EACH	8		8		
* X8760250	VIBROTACTILE FEATURE	EACH	8		8		
* X8850106	INDUCTIVE LOOP DETECTOR, RACK MOUNTED	EACH	9		9		
Δ* XX005565	REMOVE AND RESET BRICK PAVERS	SQ FT	16	16			
* XX005703	REMOVE EXISTING TRAFFIC SIGNAL EQUIPMENT, SPECIAL	L SUM	1		1		
* XX007797	LUMINAIRE (SPECIAL)	EACH	3		3		
* Z0013798	CONSTRUCTION LAYOUT	L SUM	1		1		

* SEE SPECIAL PROVISIONS

Δ SPECIALTY ITEMS

FILE NAME = p:\0070061_Urbana - Main Street HSP\Plans\sheet04 summary.dgn
 PLOT DATE = 1/18/2013 8:58:16 AM

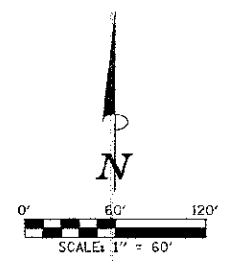
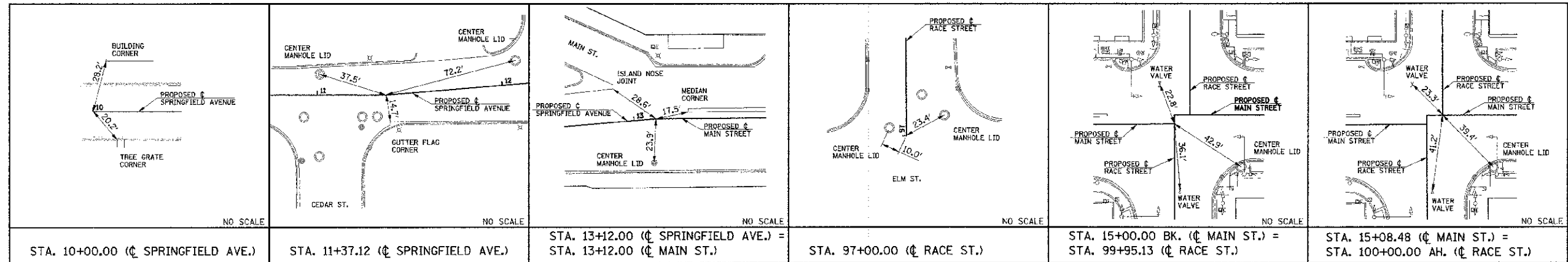
DESIGNED - JAJ	REVISED -
DRAWN - JAJ	REVISED -
CHECKED - SMW	REVISED -
DATE - 01/20/13	REVISED -

STATE OF ILLINOIS
DEPARTMENT OF TRANSPORTATION

SUMMARY OF QUANTITIES

SCALE: NONE SHEET NO. 4 OF 12 SHEETS STA. TO STA.

F.A.U. RTE.	SECTION	COUNTY	TOTAL SHEETS	SHEET NO.
7124	11-00510-00-TL	CHAMPAIGN	12	4
MAIN STREET		CONTRACT NO. 91481		
FED. ROAD DIST. NO.		ILLINOIS FED. AID PROJECT		



STA. 15+00.00 AH. (C MAIN STREET) =
 STA. 100+00.00 BK. (C RACE STREET)
 N - 1254891.78
 E - 1019034.28
 NO MAG NAIL SET

STA. 15+08.48 (C MAIN STREET) =
 STA. 100+00.00 AH. (C RACE STREET)
 N - 1254891.95
 E - 1019042.75
 MAG NAIL SET

P.O.L. STA. 103+50.00
 N - 1255241.85
 E - 1019034.79
 MAG NAIL SET

STA. 15+00.00 BK. (C MAIN STREET) =
 STA. 99+95.13 (C RACE STREET)
 N - 1254886.91
 E - 1019034.40
 MAG NAIL SET

STA. 13+12.00 (C SPRINGFIELD AVE.) =
 STA. 13+12.00 (C MAIN STREET)
 N - 1254882.12
 E - 1018846.46
 MAG NAIL SET

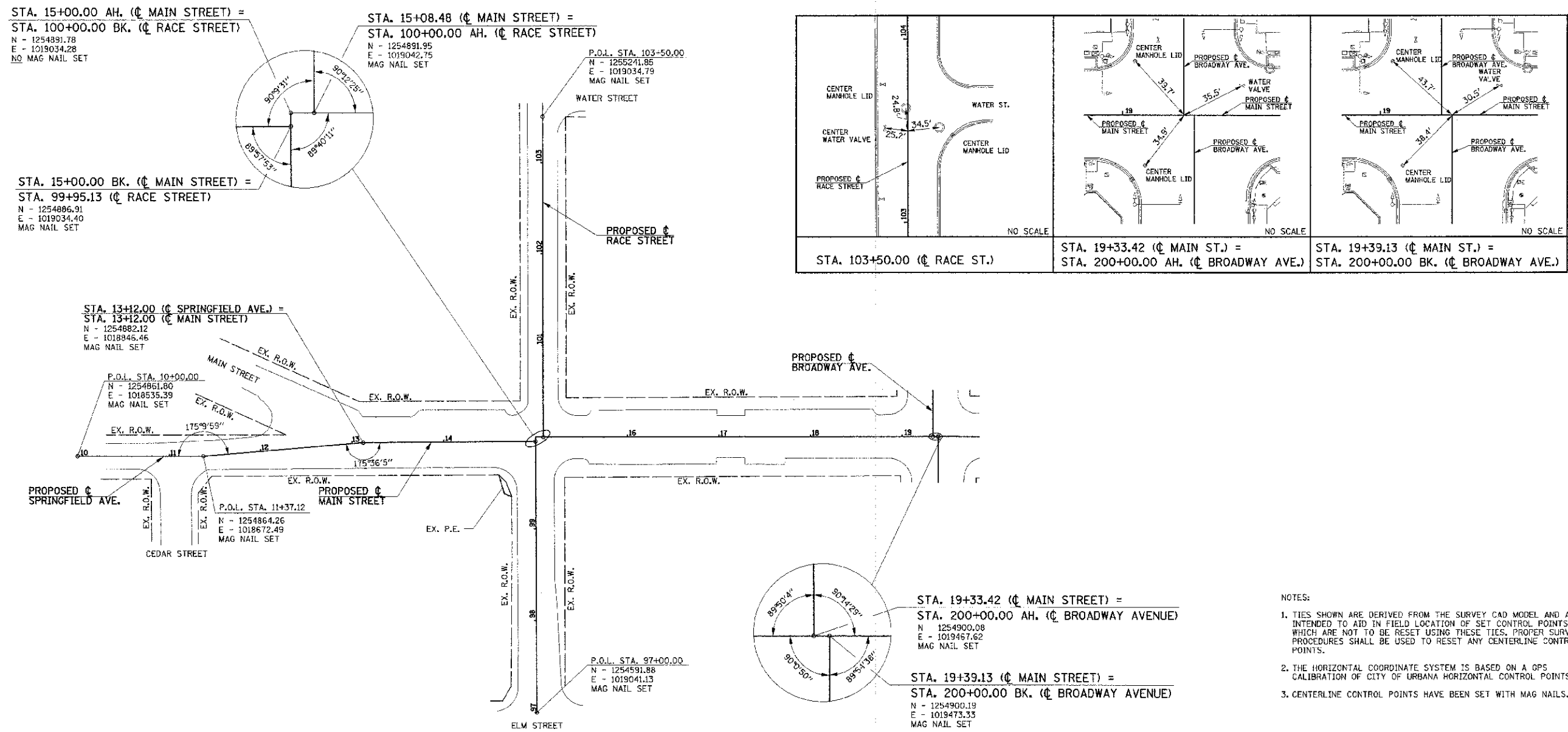
P.O.L. STA. 10+00.00
 N - 1254861.80
 E - 1018535.39
 MAG NAIL SET

P.O.L. STA. 11+37.12
 N - 1254864.26
 E - 1018672.49
 MAG NAIL SET

P.O.L. STA. 97+00.00
 N - 1254591.88
 E - 1019041.13
 MAG NAIL SET

STA. 19+33.42 (C MAIN STREET) =
 STA. 200+00.00 AH. (C BROADWAY AVENUE)
 N - 1254900.08
 E - 1019467.62
 MAG NAIL SET

STA. 19+39.13 (C MAIN STREET) =
 STA. 200+00.00 BK. (C BROADWAY AVENUE)
 N - 1254900.19
 E - 1019473.33
 MAG NAIL SET



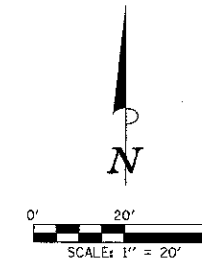
- NOTES:
1. TIES SHOWN ARE DERIVED FROM THE SURVEY CAD MODEL AND ARE INTENDED TO AID IN FIELD LOCATION OF SET CONTROL POINTS, WHICH ARE NOT TO BE RESET USING THESE TIES. PROPER SURVEY PROCEDURES SHALL BE USED TO RESET ANY CENTERLINE CONTROL POINTS.
 2. THE HORIZONTAL COORDINATE SYSTEM IS BASED ON A OPS CALIBRATION OF CITY OF URBANA HORIZONTAL CONTROL POINTS.
 3. CENTERLINE CONTROL POINTS HAVE BEEN SET WITH MAG NAILS.

FILE NAME = p:\0070661_Urbana - Main Street HSP\Plans\sheet\05 layout and control.dgn	DESIGNED - DLM	REVISED -	STATE OF ILLINOIS DEPARTMENT OF TRANSPORTATION	HORIZONTAL ALIGNMENT LAYOUT AND CONTROL			F.A.U. RTE. 7124	SECTION 11-00510-00-TL	COUNTY CHAMPAIGN	TOTAL SHEET SHEETS: NO. 12 5
PLOT DATE = 1/15/2013 9:08:17 PM	DRAWN - DLM	REVISED -		SCALE: 1"=60'	SHEET NO. 5 OF 12 SHEETS	STA. TO STA.	MAIN STREET CONTRACT NO. 91481			
	CHECKED - SMW	REVISED -		FED. ROAD DIST. NO. ILLINOIS FED. AID PROJECT						
	DATE - 01/2013	REVISED -								

REMOVAL NOTES

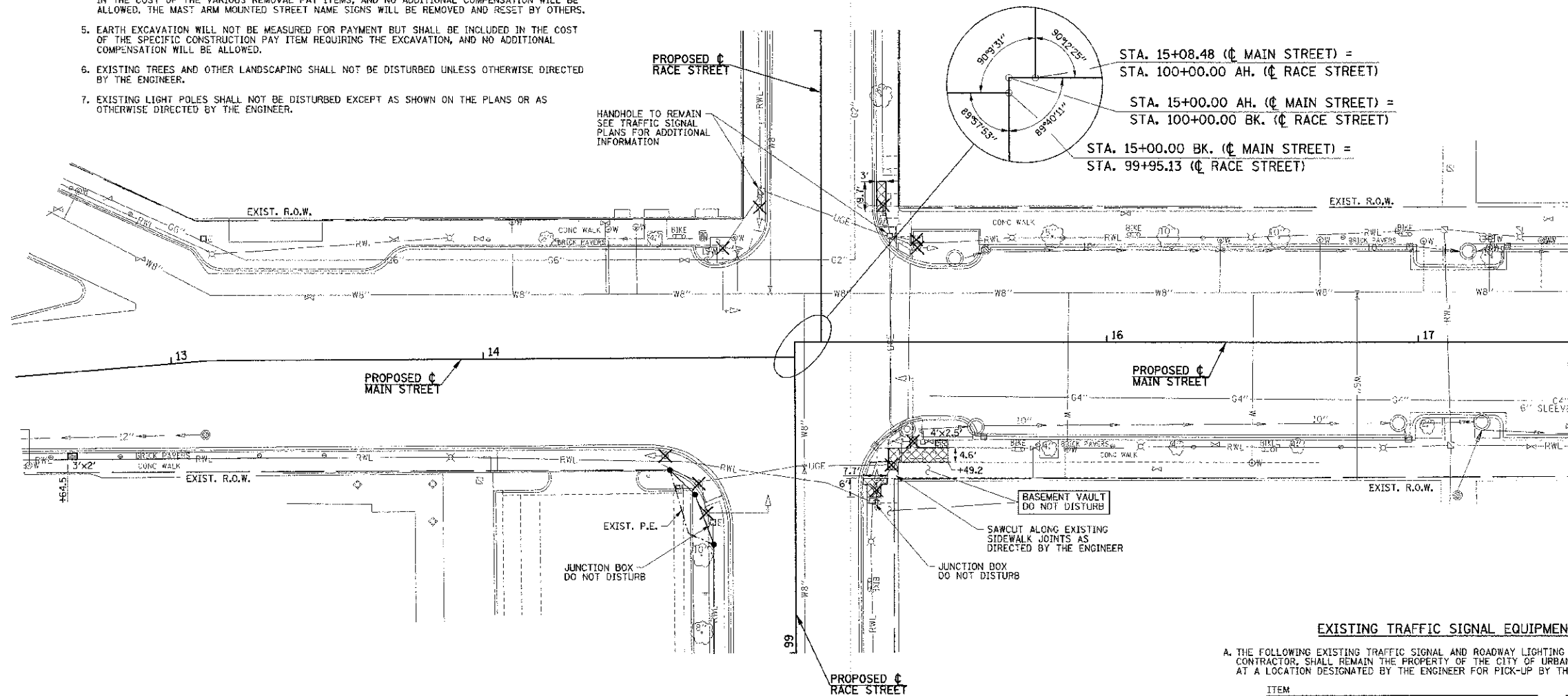
- BRICK PAVERS THAT ARE REMOVED FOR THE REMOVAL OR INSTALLATION OF TRAFFIC SIGNAL EQUIPMENT SHALL BE CUT AS NECESSARY AND REINSTALLED AT THEIR ORIGINAL LOCATIONS UNLESS OTHERWISE DIRECTED BY THE ENGINEER. THIS WORK WILL BE INCLUDED IN THE COST OF REMOVE AND RESET BRICK PAVERS, AND NO ADDITIONAL COMPENSATION WILL BE ALLOWED.
- THE CONTRACTOR SHALL MAKE FULL DEPTH SAW CUTS AT ALL SIDEWALK REMOVAL LIMITS.
- THE REMOVAL LIMITS MAY BE ADJUSTED AS DIRECTED BY THE ENGINEER.
- THE CONTRACTOR SHALL BE RESPONSIBLE FOR REMOVING, STORING, AND RESETTING ALL SIGNS AFFECTED BY THE CONSTRUCTION, EXCEPT FOR THE MAST ARM MOUNTED STREET NAME SIGNS. THIS INCLUDES SIGNS MOUNTED ON EXISTING SIGNAL EQUIPMENT OR AT OTHER LOCATIONS SHOWN IN THE PLANS. THIS WORK WILL NOT BE PAID FOR SEPARATELY BUT SHALL BE INCLUDED IN THE COST OF THE VARIOUS REMOVAL PAY ITEMS, AND NO ADDITIONAL COMPENSATION WILL BE ALLOWED. THE MAST ARM MOUNTED STREET NAME SIGNS WILL BE REMOVED AND RESET BY OTHERS.
- EARTH EXCAVATION WILL NOT BE MEASURED FOR PAYMENT BUT SHALL BE INCLUDED IN THE COST OF THE SPECIFIC CONSTRUCTION PAY ITEM REQUIRING THE EXCAVATION, AND NO ADDITIONAL COMPENSATION WILL BE ALLOWED.
- EXISTING TREES AND OTHER LANDSCAPING SHALL NOT BE DISTURBED UNLESS OTHERWISE DIRECTED BY THE ENGINEER.
- EXISTING LIGHT POLES SHALL NOT BE DISTURBED EXCEPT AS SHOWN ON THE PLANS OR AS OTHERWISE DIRECTED BY THE ENGINEER.

THE ROADWAY AND SIDEWALK IMPROVEMENTS AT THE MAIN STREET AND RACE STREET INTERSECTION WILL BE PERFORMED UNDER A SEPARATE PROJECT ALONG MAIN STREET. THE CONTRACTOR SHALL COORDINATE THE SIDEWALK REMOVAL REQUIRED FOR THE TRAFFIC SIGNAL MODERNIZATION AT RACE STREET WITH THE SIDEWALK REMOVAL REQUIRED FOR THE MAIN STREET IMPROVEMENTS PERFORMED UNDER THE SEPARATE PROJECT AS DIRECTED BY THE ENGINEER. NO ADDITIONAL COMPENSATION WILL BE ALLOWED FOR THE COORDINATION OF REMOVAL ITEMS.



LEGEND

✕ EXISTING TRAFFIC SIGNAL EQUIPMENT TO BE REMOVED



STA. 15+08.48 (C MAIN STREET) =
STA. 100+00.00 AH. (C RACE STREET)

STA. 15+00.00 AH. (C MAIN STREET) =
STA. 100+00.00 BK. (C RACE STREET)

STA. 15+00.00 BK. (C MAIN STREET) =
STA. 99+95.13 (C RACE STREET)

EXISTING TRAFFIC SIGNAL EQUIPMENT TO BE REMOVED

A. THE FOLLOWING EXISTING TRAFFIC SIGNAL AND ROADWAY LIGHTING EQUIPMENT SHALL BE REMOVED BY THE CONTRACTOR, SHALL REMAIN THE PROPERTY OF THE CITY OF URBANA, AND SHALL BE MOVED TO AND STORED AT A LOCATION DESIGNATED BY THE ENGINEER FOR PICK-UP BY THE CITY'S FORCES:

ITEM	UNIT	QUANTITY
CONTROLLER IN CABINET (COMPLETED)	EACH	1
TRAFFIC SIGNAL POST	EACH	4
COMBINATION MAST ARM ASSEMBLY AND POLE	EACH	3
LIGHT POLE WITH DAVIT ARM	EACH	1
TRAFFIC SIGNAL BACKPLATE	EACH	3
SIGNAL HEAD	EACH	12
PEDESTRIAN SIGNAL HEAD	EACH	8

THIS WORK SHALL BE INCLUDED IN THE CONTRACT LUMP SUM PRICE FOR REMOVE EXISTING TRAFFIC SIGNAL EQUIPMENT, SPECIAL REMOVAL OF INDIVIDUAL ITEMS WILL NOT BE PAID FOR SEPARATELY.

B. THE CONTRACTOR SHALL REMOVE THE FOLLOWING EXISTING TRAFFIC SIGNAL AND ROADWAY LIGHTING ITEMS AND DISPOSE OF THEM IN ACCORDANCE WITH THE CONTRACT DOCUMENTS:

ITEM	UNIT	QUANTITY
HANDHOLE	EACH	2
CONCRETE FOUNDATION	EACH	9

THIS WORK WILL BE PAID FOR AT THE CONTRACT UNIT PRICE EACH FOR REMOVE EXISTING HANDHOLE AND REMOVE EXISTING CONCRETE FOUNDATION.

C. THE CONTRACTOR SHALL REMOVE THE EXISTING ELECTRIC CABLES AS SHOWN ON THE TRAFFIC SIGNAL PLANS AND AS DIRECTED BY THE ENGINEER. THE CONTRACTOR SHALL DISPOSE OF THE ELECTRIC CABLES IN ACCORDANCE WITH THE CONTRACT DOCUMENTS. CABLES THAT ARE REMOVED SHALL NOT BE REUSED; THE REMAINING CABLES AT THE INTERSECTION SHALL BE ABANDONED IN PLACE UNLESS OTHERWISE DIRECTED BY THE ENGINEER. THIS WORK SHALL BE INCLUDED IN THE CONTRACT LUMP SUM PRICE FOR REMOVE EXISTING TRAFFIC SIGNAL EQUIPMENT, SPECIAL, AND NO ADDITIONAL COMPENSATION WILL BE ALLOWED. REMOVAL OF INDIVIDUAL CABLES WILL NOT BE PAID FOR SEPARATELY.

D. REFER TO THE TRAFFIC SIGNAL PLANS FOR ADDITIONAL INFORMATION.

SIDEWALK REMOVAL 44000600

LOCATION	SQ. FT.
NE CORNER MAIN AND RACE	29
SE CORNER MAIN AND RACE	135
TOTAL	164

REMOVE AND RESET BRICK PAVERS XX005565

LOCATION	SQ. FT.
MAIN WEST OF RACE	6
SE CORNER MAIN AND RACE	10
TOTAL	16

FILE NAME = p:\00970061_Urbana - Main Street HSIP\Plans\sheet\06 removal.dgn
PLOT DATE = 1/5/2013 9:08:18 PM

DESIGNED - JAJ	REVISED -
DRAWN - KLR	REVISED -
CHECKED - SMW	REVISED -
DATE - 01/2013	REVISED -

STATE OF ILLINOIS
DEPARTMENT OF TRANSPORTATION

REMOVAL PLANS

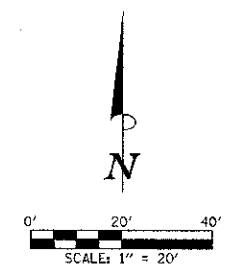
SCALE: 1"=20' SHEET NO. 6 OF 12 SHEETS STA. TO STA.

F.A.U. RTE.	SECTION	COUNTY	TOTAL SHEETS	SHEET NO.
7124	11-00510-00-TL	CHAMPAIGN	12	6
MAIN STREET			CONTRACT NO. 91481	
ILLINOIS FED. AID PROJECT				

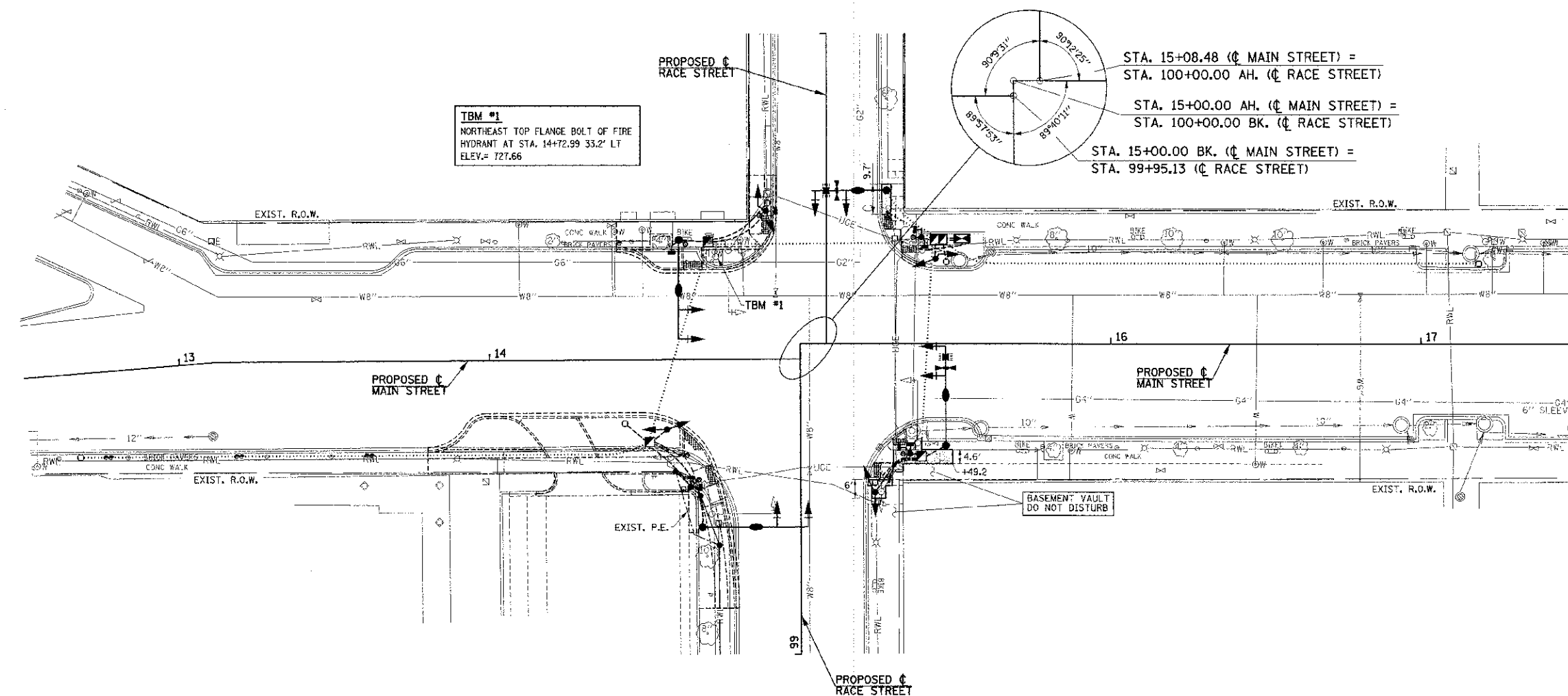
THE ROADWAY AND SIDEWALK IMPROVEMENTS AT THE MAIN STREET AND RACE STREET INTERSECTION WILL BE PERFORMED UNDER A SEPARATE PROJECT ALONG MAIN STREET AND ARE SHOWN FOR INFORMATION ONLY. THE CONTRACTOR SHALL COORDINATE THE PROPOSED SIDEWALK REQUIRED FOR THE TRAFFIC SIGNAL MODERNIZATION AT RACE STREET WITH THE PROPOSED SIDEWALK REQUIRED FOR THE MAIN STREET IMPROVEMENTS PERFORMED UNDER THE SEPARATE PROJECT AS DIRECTED BY THE ENGINEER. NO ADDITIONAL COMPENSATION WILL BE ALLOWED FOR THE COORDINATION OF PROPOSED ITEMS.

EXISTING TREES AND OTHER LANDSCAPING SHALL NOT BE DISTURBED UNLESS OTHERWISE DIRECTED BY THE ENGINEER.

THE TOPSOIL REQUIRED IN THE PLANTER AREAS WILL BE FURNISHED AND INSTALLED BY THE CITY OF URBANA.



LEGEND
 ----- PROPOSED IMPROVEMENTS BY OTHERS (SHOWN FOR INFORMATION ONLY)



TBM #1
 NORTHEAST TOP FLANGE BOLT OF FIRE HYDRANT AT STA. 14+72.99 33.2' LT
 ELEV.= 727.66

STA. 15+08.48 (C MAIN STREET) =
 STA. 100+00.00 AH. (C RACE STREET)
 STA. 15+00.00 AH. (C MAIN STREET) =
 STA. 100+00.00 BK. (C RACE STREET)
 STA. 15+00.00 BK. (C MAIN STREET) =
 STA. 99+95.13 (C RACE STREET)

BASEMENT VAULT
 DO NOT DISTURB

AGGREGATE FOR TEMPORARY ACCESS
 40201000

LOCATION	TON
APPROXIMATE QUANTITY	6
TOTAL	6

PORTLAND CEMENT CONCRETE SIDEWALK 6 INCH
 42400300

LOCATION	50 FT
NE CORNER MAIN AND RACE	29
SE CORNER MAIN AND RACE	135
TOTAL	164

FILE NAME = p:\0070001_Urbana - Main Street HSIP\Plan\shae\107_roadway.dgn
 PLOT DATE = 1/15/2013 9:06:18 PM

DESIGNED - JAJ	REVISED -
DRAWN - KLR	REVISED -
CHECKED - SMW	REVISED -
DATE - 01/2013	REVISED -

STATE OF ILLINOIS
 DEPARTMENT OF TRANSPORTATION

ROADWAY PLANS

F.A.I. RTE.	SECTION	COUNTY	TOTAL SHEETS	SHEET NO.
7124	11-00510-00-TL	CHAMPAIGN	12	7
MAIN STREET		CONTRACT NO. 91481		
SCALE: 1"=20'	SHEET NO. 7 OF 12 SHEETS	STA. TO STA.		
CITY OF URBANA		SECTION NO. 11-00510-00-TL	CHAMPAIGN COUNTY	

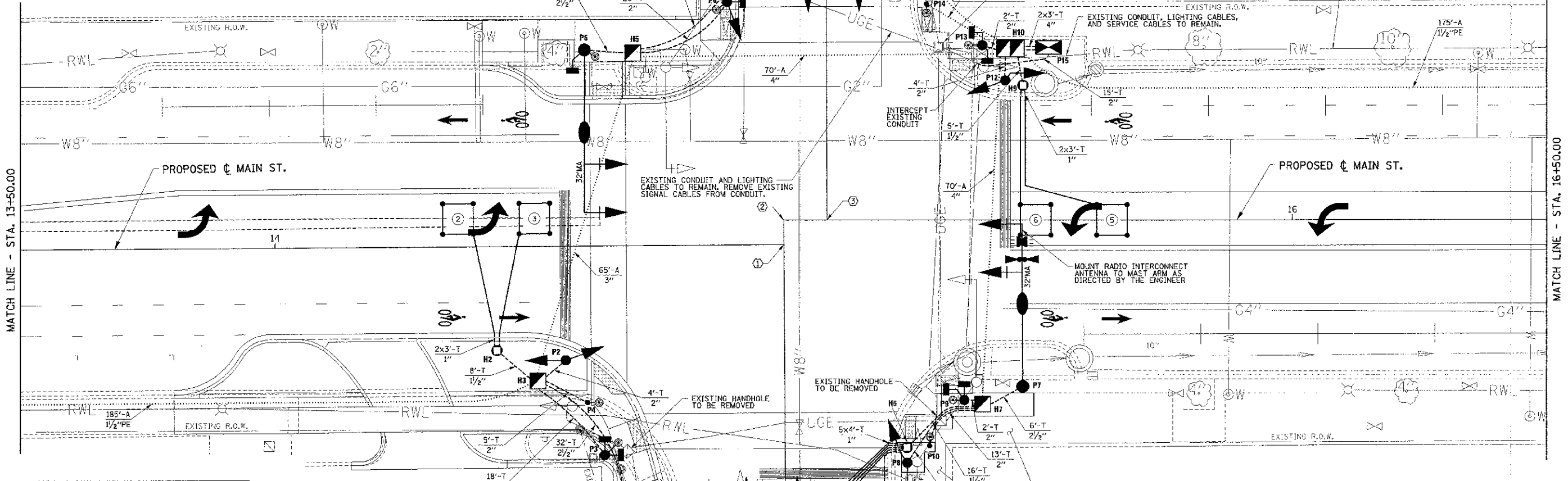
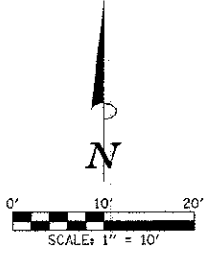
POST, MAST ARM, AND CONTROLLER DATA				
NO.	STATION	OFFSET	DESCRIPTION	FOUNDATION
P1	14+68.3	54.1' RT	STEEL COMB. MAST ARM ASSEMBLY AND POLE 34'	E-30"DIA.-13.5'
P2	14+57.0	22.5' RT	TRAFFIC SIGNAL POST, 14'	A
P3	14+64.6	41.2' RT	TRAFFIC SIGNAL POST, 10'	A
P4	14+61.3	30.8' RT	PEDESTRIAN PUSH-BUTTON POST	(SEE DETAIL)
P5	14+61.0	38.6' LT	STEEL COMB. MAST ARM ASSEMBLY AND POLE 32'	E-30"DIA.-13.5'
P6	14+89.1	47.9' LT	TRAFFIC SIGNAL POST, 16'	A
P7	15+47.0	32.8' RT	STEEL COMB. MAST ARM ASSEMBLY AND POLE 32'	E-30"DIA.-13.5'
P8	15+24.3	47.9' RT	TRAFFIC SIGNAL POST, 14'	A
P9	15+35.5	35.5' RT	TRAFFIC SIGNAL POST, 10'	A
P10	15+28.7	44.5' RT	PEDESTRIAN PUSH-BUTTON POST	(SEE DETAIL)
P11	15+27.7	49.6' LT	STEEL COMB. MAST ARM ASSEMBLY AND POLE 24'	E-30"DIA.-13.5'
P12	15+43.5	27.5' LT	TRAFFIC SIGNAL POST, 14'	A
P13	15+39.0	34.4' LT	TRAFFIC SIGNAL POST, 10'	A
P14	15+28.0	42.5' LT	PEDESTRIAN PUSH-BUTTON POST	(SEE DETAIL)
P15	15+52.0	34.0' LT	FULL-ACTUATED CONTROLLER AND TYPE IV CABINET	C

SOME OF THE TRAFFIC SIGNAL ITEMS WILL BE PLACED IN LOCATIONS WHERE THE SIDEWALKS WILL BE REMOVED UNDER A SEPARATE PROJECT ALONG MAIN STREET. THE CONTRACTOR SHALL COORDINATE THE PLACEMENT OF THE TRAFFIC SIGNAL ITEMS WITH THE PROPOSED SIDEWALK REMOVAL AND REPLACEMENT REQUIRED FOR THE MAIN STREET IMPROVEMENTS PERFORMED UNDER THE SEPARATE PROJECT AS DIRECTED BY THE ENGINEER. NO ADDITIONAL COMPENSATION WILL BE ALLOWED FOR THE COORDINATION OF THESE ITEMS.

EXISTING HANDHOLE AND LIGHTING CABLES TO REMAIN. REMOVE EXISTING SIGNAL CABLES FROM HANDHOLE. PLUG ABANDONED CONDUITS AS DIRECTED BY THE ENGINEER.

NOTES:

- THE CONTRACTOR SHALL VERIFY THE LOCATION OF ALL UTILITIES PRIOR TO CONSTRUCTING THE CONCRETE FOUNDATIONS.
- EXCAVATIONS ADJACENT TO CONCRETE FOUNDATIONS SHALL BE BACKFILLED PRIOR TO CONSTRUCTING THE FOUNDATIONS AS DIRECTED BY THE ENGINEER. TRENCH BACKFILL MATERIAL OR CONTROLLED LOW STRENGTH MATERIAL SHALL BE BLOCKED OUT AT THE FOUNDATION LOCATIONS TO ALLOW FOR THEIR LATER CONSTRUCTION.
- THE CONTRACTOR SHALL VERIFY THE LOCATION OF THE EXISTING CONDUIT TO BE INTERCEPTED.
- THE INTERSECTION OF MAIN STREET AND RACE STREET SHALL BE ALL-WAY STOP-CONTROLLED DURING THE CONSTRUCTION OF THE PROPOSED TRAFFIC SIGNAL IMPROVEMENTS. THE CONTRACTOR SHALL FURNISH, INSTALL, AND MAINTAIN TEMPORARY "STOP" SIGNS ON EACH QUADRANT OF THE INTERSECTION AS DIRECTED BY THE ENGINEER. THIS WORK WILL NOT BE PAID FOR SEPARATELY BUT SHALL BE INCLUDED IN THE COST OF TRAFFIC CONTROL AND PROTECTION (SPECIAL), AND NO ADDITIONAL COMPENSATION WILL BE ALLOWED.
- THE ROADWAY AND SIDEWALK IMPROVEMENTS THAT ARE NOT REQUIRED FOR THE TRAFFIC SIGNAL MODERNIZATION WILL BE PERFORMED UNDER A SEPARATE PROJECT AND ARE SHOWN FOR INFORMATION ONLY.



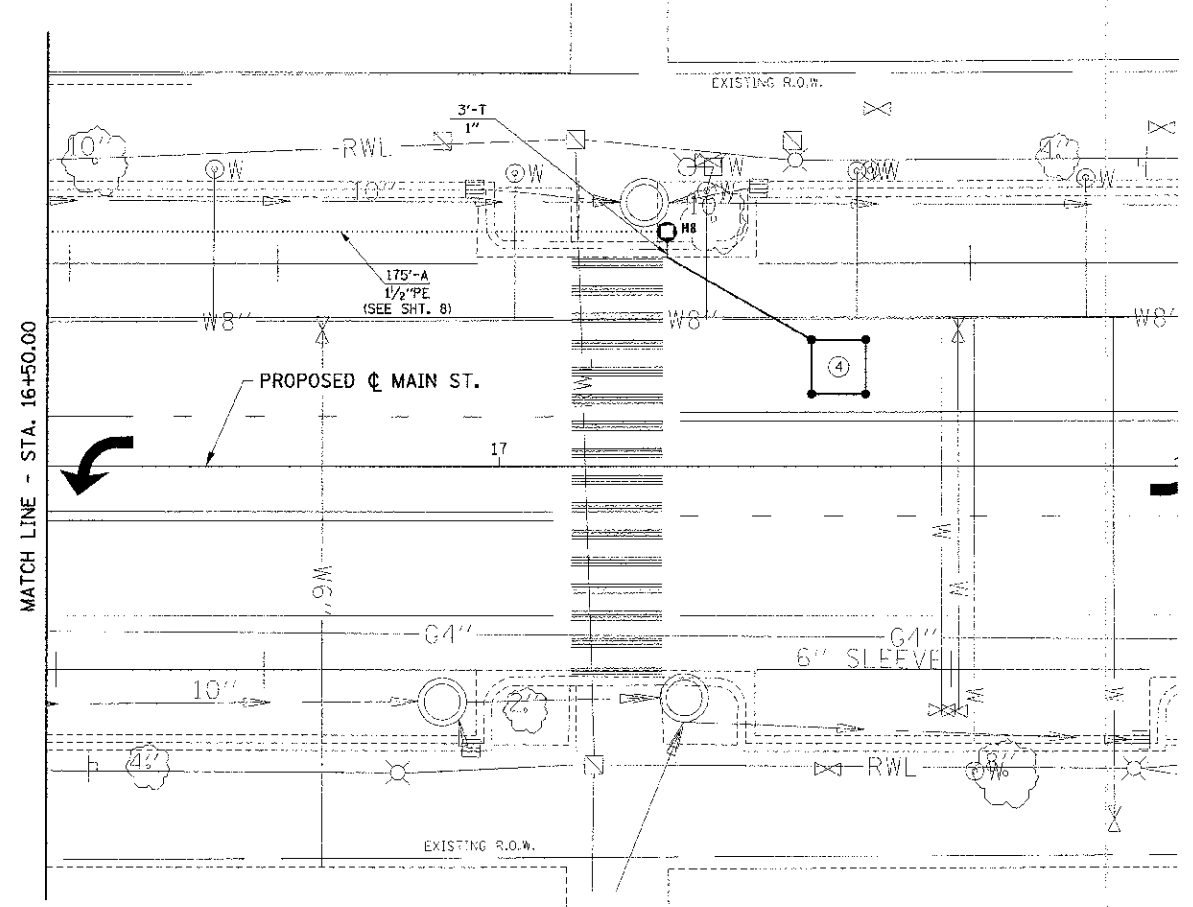
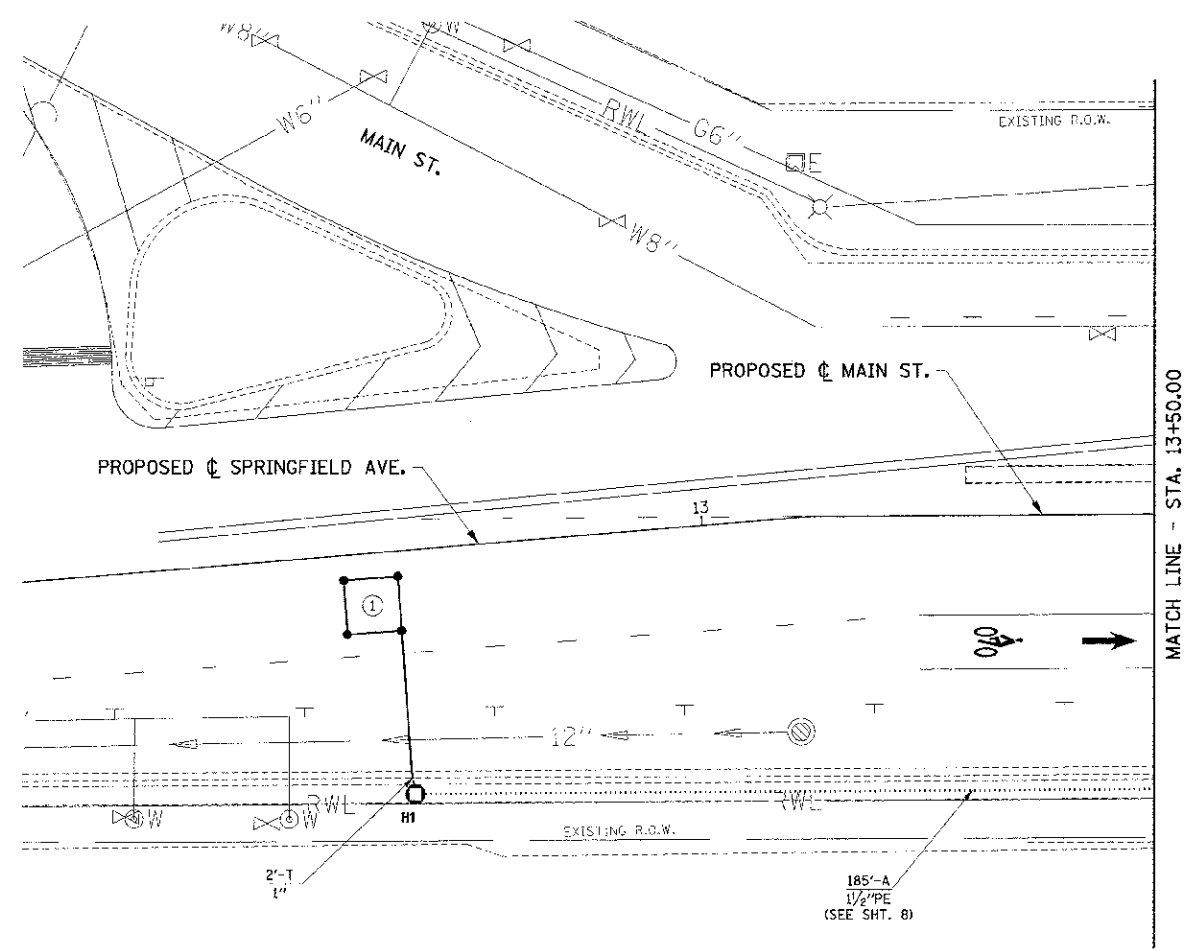
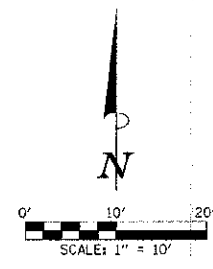
DETECTOR LOOP DATA				
NO.	STATION	OFFSET	SIZE	NO. OF TURNS
1	12+63.0	5.8' RT	6' x 6'	5
2	14+36.0	5.5' LT	6' x 6'	4
3	14+51.0	5.5' LT	6' x 6'	4
4	17+37.5	11.0' LT	6' x 6'	4
5	15+64.5	CL	6' x 6'	4
6	15+49.5	CL	6' x 6'	4
7	99+29.0	10.0' RT	6' x 6'	4
8	99+44.0	10.0' RT	6' x 6'	4
9	99+29.0	CL	6' x 6'	4
10	99+44.0	CL	6' x 6'	4
11	100+68.0	11.0' LT	6' x 6'	4
12	100+53.0	11.0' LT	6' x 6'	4
13	100+68.0	1.0' LT	6' x 6'	4
14	100+53.0	1.0' LT	6' x 6'	4
15	99+44.0	17.5' RT	6' x 4'*	4*

- KEY NOTES
- ① STA. 15+00.00 BK. (CL MAIN ST.) = STA. 99+95.13 (CL RACE ST.)
 - ② STA. 15+00.00 AH. (CL MAIN ST.) = STA. 100+00.00 BK. (CL RACE ST.)
 - ③ STA. 15+08.48 (CL MAIN ST.) = STA. 100+00.00 AH. (CL RACE ST.)

HANDHOLE AND GULFBOX JUNCTION DATA			
NO.	STATION	OFFSET	DESCRIPTION
H1	12+65.0	27.0' RT	GULFBOX JUNCTION, CC
H2	14+43.5	20.5' RT	GULFBOX JUNCTION, CC
H3	14+51.5	26.5' RT	HANDHOLE, PCC
H4	14+89.6	50.4' LT	GULFBOX JUNCTION, CC
H5	14+70.5	38.0' LT	HANDHOLE, PCC
H6	15+24.3	44.9' RT	GULFBOX JUNCTION, CC
H7	15+39.1	36.3' RT	HANDHOLE, PCC
H8	17+18.5	26.0' LT	GULFBOX JUNCTION, CC
H9	15+47.0	26.5' LT	GULFBOX JUNCTION, CC
H10	15+44.5	33.8' LT	DOUBLE HANDHOLE, PCC

TRAFFIC SIGNAL LEGEND	
--- (A)	CONDUIT AUGERED (A)
--- (T)	CONDUIT IN TRENCH (T)
●	STEEL COMB. MAST ARM ASSEMBLY AND POLE
○	SIGNAL POST
○	SIGNAL HEAD
○	SIGNAL HEAD WITH BACKPLATE
○	PEDESTRIAN SIGNAL HEAD
○	PEDESTRIAN PUSH-BUTTON POST
○	ACCESSIBLE PEDESTRIAN SIGNALS
○	CONTROLLER AND CABINET
□	DETECTOR LOOP, TYPE I
■	SERVICE INSTALLATION
○	CONFIRMATION BEACON
○	EMERGENCY VEHICLE PREEMPTION DETECTOR
□	HANDHOLE, PORTLAND CEMENT CONCRETE
□	DOUBLE HANDHOLE, PORTLAND CEMENT CONCRETE
○	GULFBOX JUNCTION
PE	POLYETHYLENE DUCT

FILE NAME = p:\10070061_Urbana - Main Street H91Plans\sheet\08 traffic signals.dgn	DESIGNED - JAJ	REVISED -	STATE OF ILLINOIS DEPARTMENT OF TRANSPORTATION		MAIN STREET & RACE STREET TRAFFIC SIGNAL PLANS TRAFFIC SIGNAL LAYOUT				F.A.U. RTE. 7124	SECTION 11-00510-00-TL	COUNTY CHAMPAIGN	TOTAL SHEETS 12	SHEET NO. 8			
PLOT DATE = 1/15/2013 9:05:19 PM	DRAWN - KLR	REVISED -							SCALE: 1"=10'		SHEET NO. 8 OF 12 SHEETS		STA. TO STA.		CONTRACT NO. 91481	
	CHECKED - SMW	REVISED -							CITY OF URBANA		SECTION NO. 11-00510-00-TL		CHAMPAIGN COUNTY		FED. ROAD DIST. NO. ILLINOIS FED. AID PROJECT	
	DATE - 01/2013	REVISED -														



TRAFFIC SIGNAL LEGEND

- CONDUIT AUGERED (A)
- CONDUIT IN TRENCH (T)
- STEEL COMB. MAST ARM ASSEMBLY AND POLE
- SIGNAL POST
- ▲ SIGNAL HEAD
- ▲+ SIGNAL HEAD WITH BACKPLATE
- ▲- PEDESTRIAN SIGNAL HEAD
- PEDESTRIAN PUSH-BUTTON POST
- ACCESSIBLE PEDESTRIAN SIGNALS
- ☒ CONTROLLER AND CABINET
- ☐ DETECTOR LOOP, TYPE 1
- ⚡ SERVICE INSTALLATION
- ⊕ CONFIRMATION BEACON
- ⚡ EMERGENCY VEHICLE PREEMPTION DETECTOR
- ☒ HANDHOLE, PORTLAND CEMENT CONCRETE
- ☒ DOUBLE HANDHOLE, PORTLAND CEMENT CONCRETE
- GULFBOX JUNCTION
- PE POLYETHYLENE DUCT

FILE NAME = p:\00070061_Urbana - Main Street H&I\Plans\Sheets\06 traffic signals.dgn
 PLOT DATE = 1/15/2013 9:08:19 PM

DESIGNED - JAJ	REVISED -
DRAWN - KLR	REVISED -
CHECKED - SMW	REVISED -
DATE - 01/2013	REVISED -

STATE OF ILLINOIS
 DEPARTMENT OF TRANSPORTATION

**MAIN STREET & RACE STREET
 TRAFFIC SIGNAL PLANS
 TRAFFIC SIGNAL LAYOUT**

SCALE: 1"=10' SHEET NO. 9 OF 12 SHEETS STA. TO STA.

F.A.J. RIE.	SECTION	COUNTY	TOTAL SHEETS	SHEET NO.
7124	11-00510-00-TL	CHAMPAIGN	12	9
MAIN STREET		CONTRACT NO. 91481		
FED. ROAD DIST. NO.		ILLINOIS FED. AID PROJECT		

BILL OF MATERIALS

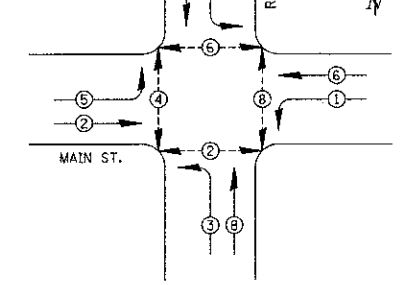
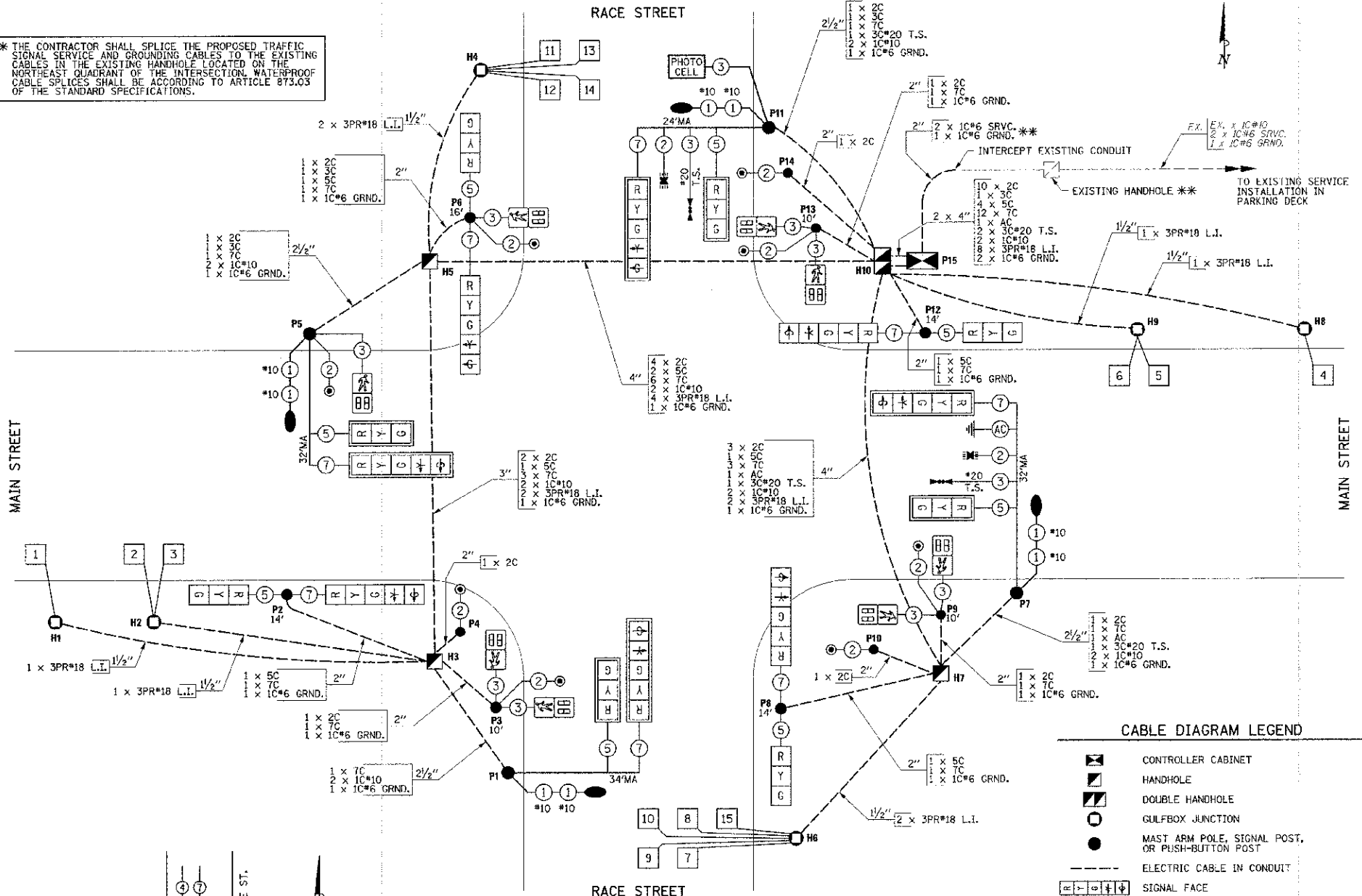
ITEM	UNIT	QUANTITY
UNDERGROUND CONDUIT, PVC, 1" DIA.	FOOT	49
UNDERGROUND CONDUIT, PVC, 1 1/2" DIA.	FOOT	51
UNDERGROUND CONDUIT, PVC, 2" DIA.	FOOT	106
UNDERGROUND CONDUIT, PVC, 2 1/2" DIA.	FOOT	66
UNDERGROUND CONDUIT, PVC, 3" DIA.	FOOT	65
UNDERGROUND CONDUIT, PVC, 4" DIA.	FOOT	146
UNDERGROUND CONDUIT, COILABLE NONMETALLIC CONDUIT, 1 1/2"	FOOT	360
HANDHOLE, PORTLAND CEMENT CONCRETE	EACH	3
DOUBLE HANDHOLE, PORTLAND CEMENT CONCRETE	EACH	1
GULFBOX JUNCTION, COMPOSITE CONCRETE	EACH	6
ELECTRIC CABLE IN CONDUIT, 600V OLP-TYPE USED 1/C NO. 10	FOOT	1120
FULL-ACTUATED CONTROLLER AND TYPE IV CABINET	EACH	1
UNINTERRUPTIBLE POWER SUPPLY, STANDARD	EACH	1
ELECTRIC CABLE IN CONDUIT, SIGNAL, NO. 14 2C	FOOT	1300
ELECTRIC CABLE IN CONDUIT, SIGNAL, NO. 14 3C	FOOT	150
ELECTRIC CABLE IN CONDUIT, SIGNAL, NO. 14 5C	FOOT	710
ELECTRIC CABLE IN CONDUIT, SIGNAL, NO. 14 7C	FOOT	1730
ELECTRIC CABLE IN CONDUIT, LEAD-IN, NO. 18 3 PAIR	FOOT	1330
ELECTRIC CABLE IN CONDUIT, SERVICE, NO. 6 1C	FOOT	80
ELECTRIC CABLE IN CONDUIT, EQUIPMENT GROUNDING CONDUCTOR, NO. 6 1C	FOOT	570
TRAFFIC SIGNAL POST, 10 FT.	EACH	3
TRAFFIC SIGNAL POST, 14 FT.	EACH	3
TRAFFIC SIGNAL POST, 16 FT.	EACH	1
PEDESTRIAN PUSH-BUTTON POST, TYPE I	EACH	3
STEEL COMBINATION MAST ARM ASSEMBLY AND POLE 24 FT.	EACH	1
STEEL COMBINATION MAST ARM ASSEMBLY AND POLE 32 FT.	EACH	2
STEEL COMBINATION MAST ARM ASSEMBLY AND POLE 34 FT.	EACH	1
CONCRETE FOUNDATION, TYPE A	FOOT	21
CONCRETE FOUNDATION, TYPE C	FOOT	4
CONCRETE FOUNDATION, TYPE E 30-INCH DIAMETER	FOOT	54
SIGNAL HEAD, POLYCARBONATE, LED, 1-FACE, 3-SECTION, MAST ARM MOUNTED	EACH	4
SIGNAL HEAD, POLYCARBONATE, LED, 1-FACE, 5-SECTION, MAST ARM MOUNTED	EACH	4
SIGNAL HEAD, POLYCARBONATE, LED, 2-FACE, 1-3-SECTION, 1-5-SECTION, BRACKET MOUNTED	EACH	4
PEDESTRIAN SIGNAL HEAD, POLYCARBONATE, LED, 1-FACE, BRACKET MOUNTED WITH COUNTDOWN TIMER	EACH	8
TRAFFIC SIGNAL BACKPLATE	EACH	8
DETECTOR LOOP, TYPE I	FOOT	660
LIGHT DETECTOR	EACH	2
LIGHT DETECTOR AMPLIFIER	EACH	1
REMOVE EXISTING HANDHOLE	EACH	2
REMOVE EXISTING CONCRETE FOUNDATION	EACH	9
MODIFY EXISTING SERVICE INSTALLATION	EACH	1
RADIO INTERCONNECT SYSTEM COMPLETE, LOCAL	EACH	1
PHOTOCELL CONTROL SYSTEM	EACH	1
ELECTRIC CABLE IN CONDUIT, NO. 20 3C, TWISTED, SHIELDED	FOOT	280
ACCESSIBLE PEDESTRIAN SIGNALS	EACH	8
VIBROTACTILE FEATURE	EACH	8
INDUCTIVE LOOP DETECTOR, RACK MOUNTED	EACH	9
REMOVE EXISTING TRAFFIC SIGNAL EQUIPMENT, SPECIAL	L. SUM	1
LUMINAIRE (SPECIAL)	EACH	3

SEE SPECIAL PROVISIONS FOR SYSTEM GROUNDING INFORMATION.

TRAFFIC SIGNAL GENERAL NOTES

- THE ACTUAL LOCATIONS OF ALL SIGNAL FOUNDATIONS, HANDHOLES, AND THE TRAFFIC SIGNAL CONTROLLER WILL BE VERIFIED IN THE FIELD BY THE ENGINEER.
- POST MOUNTED SIGNAL HEADS SHALL BE INSTALLED SUCH THAT NO PART OF THE SIGNAL HEAD IS WITHIN TWO (2) FEET OF THE FACE OF CURB. MAST ARM POLES SHALL BE PLACED SUCH THAT A MINIMUM DISTANCE OF SIX (6) FEET IS MAINTAINED BETWEEN THE CENTER OF THE POLE AND THE FACE OF CURB (ON THE MAST ARM SIDE) UNLESS OTHERWISE SHOWN ON THE PLANS.
- COMBINATION MAST ARM ASSEMBLIES SHALL BE FURNISHED WITH 12-FOOT LUMINAIRE ARMS WITH A MOUNTED LUMINAIRE HEIGHT OF 35 FEET.
- ALL MAST ARM MOUNTED SIGNAL HEADS ON AN INDIVIDUAL MAST ARM SHALL BE MOUNTED SO THAT THE RED INDICATIONS ARE LEVEL WITH EACH OTHER UNLESS OTHERWISE DIRECTED BY THE ENGINEER.
- 12" LENSES SHALL BE USED ON ALL SIGNAL FACES. LED INDICATIONS SHALL BE USED ON ALL SIGNAL HEADS AND PEDESTRIAN SIGNAL HEADS. PEDESTRIAN SIGNAL HEAD FACES SHALL BE SYMBOLS WITH COUNTDOWN TIMERS.
- ACCESSIBLE PEDESTRIAN SIGNALS SHALL BE THE POLARA NAVIGATOR SYSTEM OR APPROVED EQUIVALENT.
- THE LUMINAIRE ARM, LUMINAIRE POLE WIRING, LUMINAIRE, AND PHOTOCELL SHALL BE ERECTED WITH THE TRAFFIC SIGNAL MAST ARM POLE.
- THE CONTRACTOR SHALL VERIFY THE EXACT LOCATION OF ALL UNDERGROUND UTILITIES PRIOR TO BEGINNING CONSTRUCTION.
- NO ADDITIONAL COMPENSATION WILL BE ALLOWED FOR UNCOVERING OR HAND DIGGING AROUND UTILITIES.
- NO ADDITIONAL COMPENSATION WILL BE ALLOWED FOR PLACING CONDUIT AT GREATER THAN 2 FOOT DEPTH.
- A 1/4" POLYPROPYLENE PULL ROPE SHALL BE INSTALLED IN ALL CONDUIT RUNS EXCEEDING 20 FEET. A MINIMUM OF 2 FEET OF ROPE SHALL BE PROVIDED AT EACH END OF A CONDUIT RUN. THE ROPE SHALL BE INCLUDED IN THE COST OF THE RESPECTIVE CONDUIT PAY ITEM.
- ALL ADAPTERS REQUIRED TO CONNECT THE PROPOSED CONDUIT TO THE EXISTING CONDUIT SHALL BE INCLUDED IN THE COST OF THE RESPECTIVE CONDUIT PAY ITEM.
- THE CONTRACTOR SHALL BE RESPONSIBLE FOR OBTAINING ELECTRICAL SERVICE FOR THE TRAFFIC SIGNALS AND SHALL CONTACT THE UTILITY COMPANY AND THE CITY OF URBANA PRIOR TO COMMENCEMENT OF WORK FOR THE REQUIREMENTS FOR THE SERVICE INSTALLATION.
- THE TRAFFIC SIGNAL CONTROLLER SHALL BE ORIENTED SUCH THAT INTERSECTION OPERATION AND CONTROLLER COMPONENTS CAN BE VIEWED SIMULTANEOUSLY.
- CONTROLLER PROGRAMMING OF SIGNAL TIMING WILL BE PROVIDED BY THE CITY OF URBANA.
- THE CONFIRMATION BEACON SHALL BE INCLUDED IN THE COST OF THE LIGHT DETECTOR.
- THE ELECTRIC CABLE FOR THE LIGHT DETECTOR SHALL BE A CONTINUOUS UNBROKEN RUN FROM THE LIGHT DETECTOR TO THE LIGHT DETECTOR AMPLIFIER. SPLICES IN THE CABLE SHALL NOT BE ALLOWED.
- THE ELECTRIC CABLE FOR THE RADIO INTERCONNECT ANTENNA SHALL BE A CONTINUOUS UNBROKEN RUN FROM THE ANTENNA TO THE SURGE ARRESTOR. SPLICES IN THE CABLE SHALL NOT BE ALLOWED.
- THE THREE SECTION AND FIVE SECTION SIGNAL HEADS THAT OPERATE TOGETHER IN THE SAME PHASE AT THE SAME LOCATION WILL BE COMBINED ON A SINGLE SEVEN CONDUCTOR CABLE. TWO PEDESTRIAN SIGNAL HEADS AT THE SAME LOCATION OR ON THE SAME QUADRANT WILL BE COMBINED ON A SINGLE SEVEN CONDUCTOR CABLE. SPLICES WILL BE MADE AT THE POLE, HANDHOLE OR CONCRETE HANDHOLE WITH INDIVIDUAL CABLES RUNNING FROM THE SPLICE TO EACH SIGNAL HEAD OR PEDESTRIAN SIGNAL HEAD. WATERPROOF CABLE SPLICES SHALL BE ACCORDING TO ARTICLE 873.03 OF THE STANDARD SPECIFICATIONS.
- THE CONCRETE FOUNDATION FOR THE PEDESTRIAN PUSH-BUTTON POST SHALL BE INCLUDED IN THE COST OF THE PEDESTRIAN PUSH-BUTTON POST.
- DETECTOR LOOPS SHALL BE INSTALLED AFTER CONSTRUCTION OF THE HMA SURFACE COURSE.
- DISTURBED AREAS AROUND PROPOSED CONCRETE FOUNDATIONS SHALL BE BACKFILLED WITH CONTROLLED LOW-STRENGTH MATERIAL UNLESS OTHERWISE DIRECTED BY THE ENGINEER. THIS WORK SHALL BE INCLUDED IN THE COST OF THE CONCRETE FOUNDATION, AND NO ADDITIONAL COMPENSATION WILL BE ALLOWED.

** THE CONTRACTOR SHALL SPLICE THE PROPOSED TRAFFIC SIGNAL SERVICE AND GROUNDING CABLES TO THE EXISTING CABLES IN THE EXISTING HANDHOLE LOCATED ON THE NORTHEAST QUADRANT OF THE INTERSECTION. WATERPROOF CABLE SPLICES SHALL BE ACCORDING TO ARTICLE 873.03 OF THE STANDARD SPECIFICATIONS.



PHASE DESIGNATION DIAGRAM

PHASE DESIGNATION DIAGRAM LEGEND

- DUAL ENTRY PHASE * NUMBER REFERS TO ASSOCIATED PHASE
- PEDESTRIAN PHASE

NO.	SIZE	MODE	NO.	SIZE	MODE
1	6' x 6'	PULSE	9	6' x 6'	PRESENCE
2	6' x 6'	PRESENCE	10	6' x 6'	PRESENCE
3	6' x 6'	PRESENCE	11	6' x 6'	PRESENCE
4	6' x 6'	PULSE	12	6' x 6'	PRESENCE
5	6' x 6'	PRESENCE	13	6' x 6'	PRESENCE
6	6' x 6'	PRESENCE	14	6' x 6'	PRESENCE
7	6' x 6'	PRESENCE	15	6' x 6'	QUADRUPOLE
8	6' x 6'	PRESENCE	15	QUADRUPOLE	PRESENCE

THE FOLLOWING LOOPS SHALL BE WIRED TO COMMON AMPLIFIERS: (1) (2,3) (4) (5,6) (7,8) (9,10) (11,12) (13,14) (15) = 9 AMPLIFIERS REQUIRED.

THE CONTROLLER SHALL BE SET TO MINIMUM RECALL ON MAIN STREET.

QUADRUPOLE LOOPS SHALL BE USED IN BIKE LANES AS SHOWN ON THE PLANS UNLESS OTHERWISE DIRECTED BY THE ENGINEER. THE 6' DIMENSION SHALL BE THE LENGTH OF THE LOOP IN THE DIRECTION OF TRAVEL. THE 4' DIMENSION SHALL BE THE OVERALL WIDTH OF THE LOOP ACROSS THE BIKE LANE.

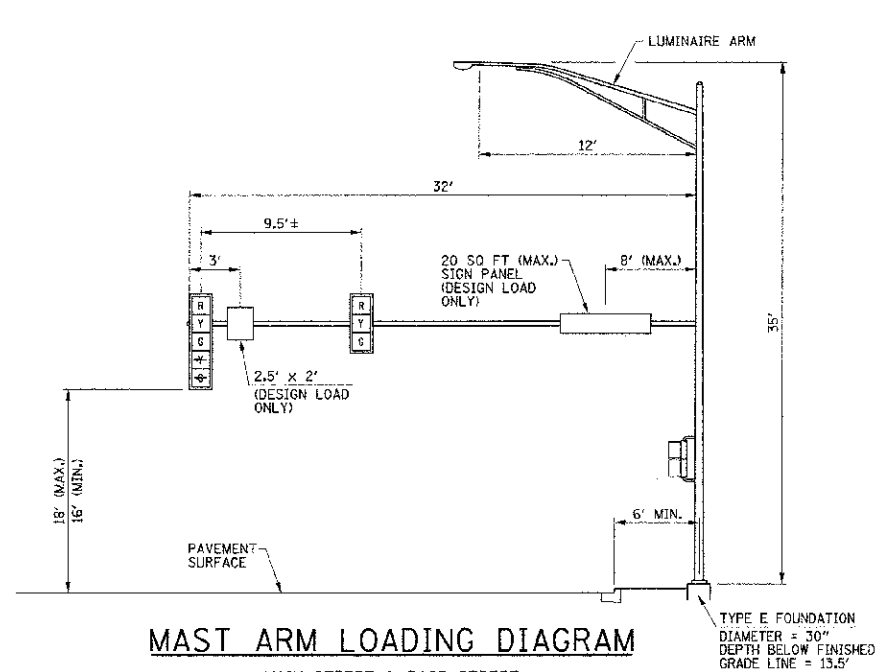
THE HOME-RUN FROM EACH LOOP SHALL ENTER A GULFBOX JUNCTION THROUGH A SEPARATE 1" CONDUIT. EACH PROPOSED SERIES OF LOOPS SHALL BE SPLICED TO ITS RESPECTIVE LEAD-IN CABLE IN A GULFBOX JUNCTION.

EACH BIKE LANE LOOP SHALL USE THE REMAINING PAIR OF THE 3 PAIR LEAD-IN CABLE FOR THE ADJACENT VEHICLE LANE LOOPS BUT SHALL BE WIRED TO ITS OWN AMPLIFIER.

CABLE DIAGRAM LEGEND

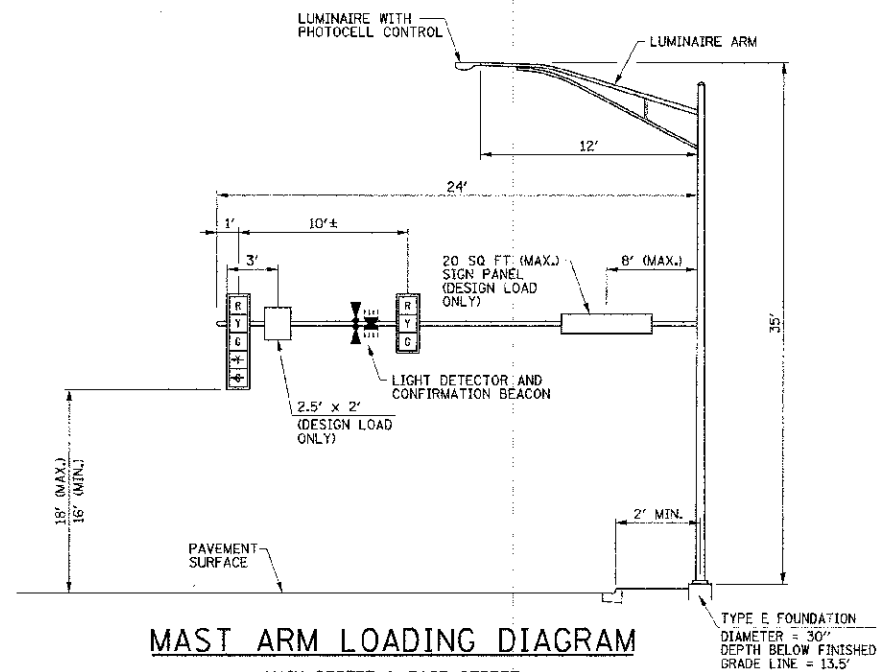
- CONTROLLER CABINET
- HANDHOLE
- DOUBLE HANDHOLE
- GULFBOX JUNCTION
- MAST ARM POLE, SIGNAL POST, OR PUSH-BUTTON POST
- ELECTRIC CABLE IN CONDUIT
- SIGNAL FACE
- SIGNAL FACE AND BACKPLATE
- ACCESSIBLE PEDESTRIAN SIGNALS
- PEDESTRIAN SIGNAL FACE
- CONFIRMATION BEACON
- EMERGENCY VEHICLE PREEMPTION DETECTOR
- SERVICE INSTALLATION
- DETECTOR LOOP, TYPE I (WITH LOOP NO.)
- LUMINAIRE
- RADIO INTERCONNECT ANTENNA
- RADIO INTERCONNECT ANTENNA CABLE
- 3 DENOTES NUMBER OF CONDUCTORS ALL CABLE #14 EXCEPT AS INDICATED
- L.I. LEAD-IN CABLE (TWISTED, SHIELDED)
- T.S. TWISTED, SHIELDED
- SRVC. SERVICE CABLE
- GRND. GROUNDING CABLE (GREEN)
- NUMBER OF CABLES IN CONDUIT
- NUMBER OF CONDUCTORS IN EACH CABLE
- CONDUIT SIZE

FILE NAME = p:\0070061\Urbana - Main Street HSIP\Plans\sheet\08 traffic signals.dgn	DESIGNED - JAJ	REVISED -	STATE OF ILLINOIS DEPARTMENT OF TRANSPORTATION		MAIN STREET & RACE STREET TRAFFIC SIGNAL PLANS		F.A.I.L. R.T.E.	SECTION	COUNTY	TOTAL SHEETS	SHEET NO.
PLOT DATE = 1/15/2013 9:06:19 PM	DRAWN - KLR	REVISED -			CABLE AND PHASE DESIGNATION DIAGRAMS / GENERAL NOTES / BILL OF MATERIALS		7124	11-00510-00-TL	CHAMPAIGN	12	10
	CHECKED - SMW	REVISED -	SCALE: NONE		SHEET NO. 10 OF 12 SHEETS	STA.	CONTRACT NO. 91481		ILLINOIS FED. AID PROJECT		
	DATE - 01/2013	REVISED -	CITY OF URBANA		SECTION NO. 11-00510-00-TL	CHAMPAIGN COUNTY					



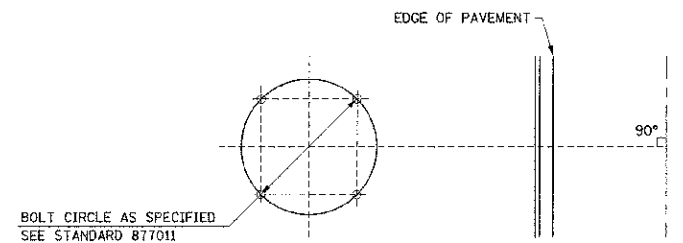
MAST ARM LOADING DIAGRAM

MAIN STREET & RACE STREET
NORTHWEST QUADRANT (LOOKING WEST)
MAST ARM NO. P5



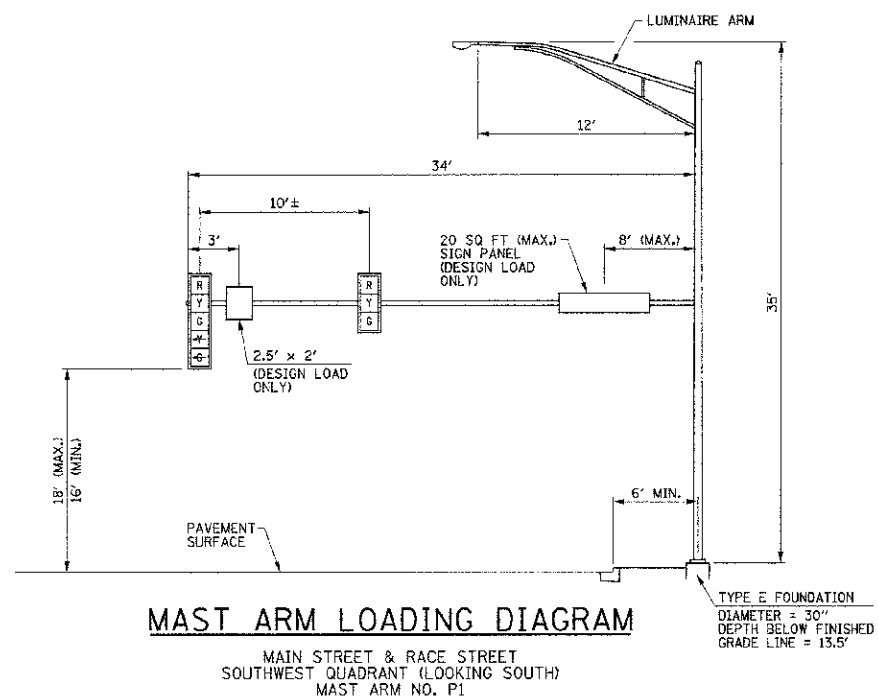
MAST ARM LOADING DIAGRAM

MAIN STREET & RACE STREET
NORTHEAST QUADRANT (LOOKING NORTH)
MAST ARM NO. P11



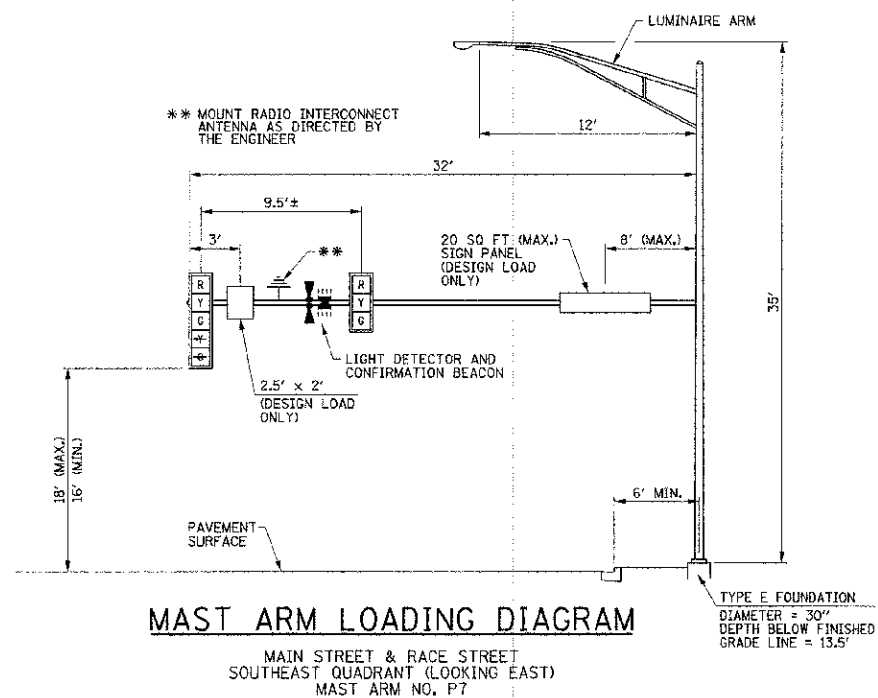
MAST ARM FOUNDATION BOLT PATTERN DETAIL

ORIENTATION OF ANCHOR BOLTS TO BE FIELD VERIFIED



MAST ARM LOADING DIAGRAM

MAIN STREET & RACE STREET
SOUTHWEST QUADRANT (LOOKING SOUTH)
MAST ARM NO. P1



MAST ARM LOADING DIAGRAM

MAIN STREET & RACE STREET
SOUTHEAST QUADRANT (LOOKING EAST)
MAST ARM NO. P7

FILE NAME = p:\U0370061_Urbana - Main Street HSIIP\Plans\Sheets\09 traffic signals.dgn
PLOT DATE = 1/15/2013 9:06:19 PM

DESIGNED - JAJ	REVISED -
DRAWN - KLR	REVISED -
CHECKED - SMW	REVISED -
DATE - 01/2013	REVISED -

STATE OF ILLINOIS
DEPARTMENT OF TRANSPORTATION

MAIN STREET & RACE STREET
TRAFFIC SIGNAL PLANS
TRAFFIC SIGNAL DETAILS

SCALE : NONE SHEET NO. 11 OF 12 SHEETS STA. TO STA.

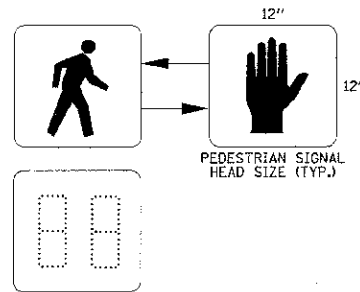
F.A.J. RTE.	SECTION	COUNTY	TOTAL SHEETS	SHEET NO.
7124	11-00510-00-TL	CHAMPAIGN	12	11
MAIN STREET		CONTRACT NO. 91481		
FED. ROAD DIST. NO.		ILLINOIS FED. AID PROJECT		



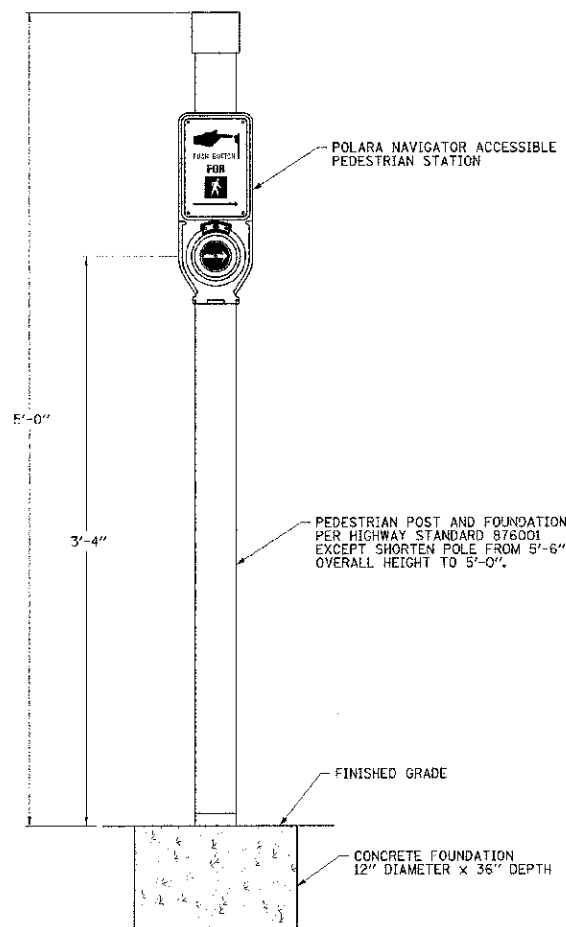
MUTCD R10-3

THE PEDESTRIAN PUSH-BUTTON SIGNS SHALL BE INCLUDED IN THE COST OF THE ACCESSIBLE PEDESTRIAN SIGNALS.

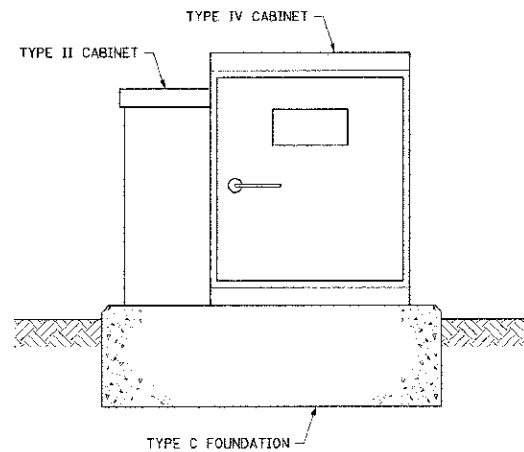
PEDESTRIAN PUSH-BUTTON SIGN DETAIL



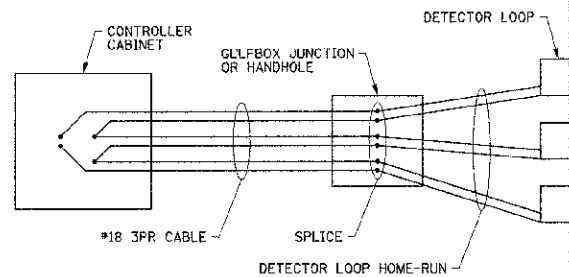
PEDESTRIAN COUNTDOWN SIGNAL DISPLAY DETAIL



PEDESTRIAN PUSH-BUTTON POST DETAIL

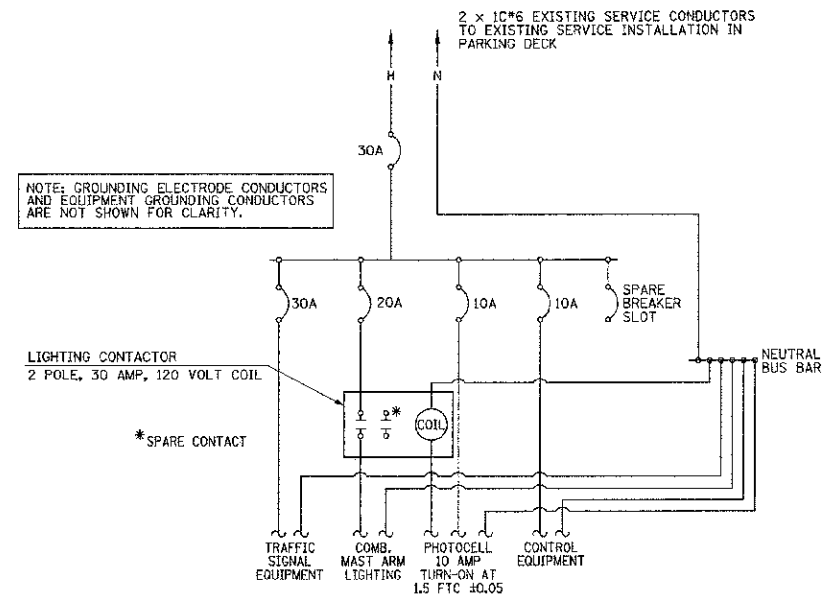


UPS BATTERY CABINET MOUNTING DETAIL

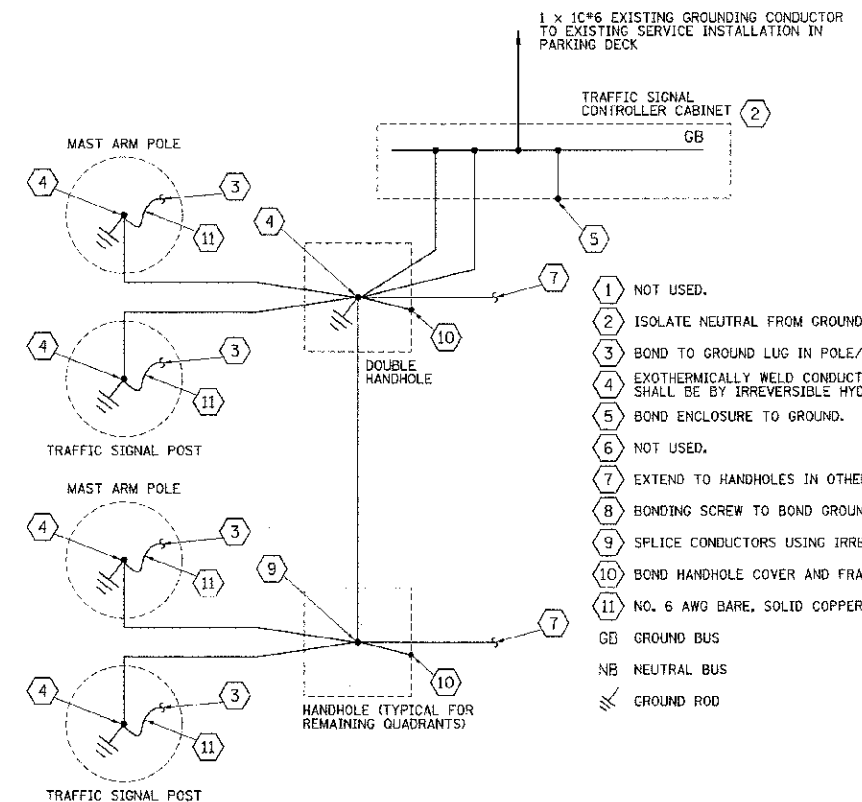


DETECTOR LOOP WIRING DETAIL

WIRED IN SERIES WITH MULTI-PAIR CABLE



TRAFFIC SIGNAL CONTROLLER INSTALLATION DIAGRAM



- 1 NOT USED.
- 2 ISOLATE NEUTRAL FROM GROUND. DO NOT BOND NEUTRAL.
- 3 BOND TO GROUND LUG IN POLE/POST.
- 4 EXOTHERMICALLY WELD CONDUCTORS TO GROUND ROD. ANY SPLICES SHALL BE BY IRREVERSIBLE HYDRAULIC COMPRESSION SPLICES.
- 5 BOND ENCLOSURE TO GROUND.
- 6 NOT USED.
- 7 EXTEND TO HANDHOLES IN OTHER QUADRANTS AS REQUIRED.
- 8 BONDING SCREW TO BOND GROUND BUS TO EQUIPMENT ENCLOSURE.
- 9 SPLICE CONDUCTORS USING IRREVERSIBLE HYDRAULIC COMPRESSION SPLICES.
- 10 BOND HANDHOLE COVER AND FRAME TO GROUND.
- 11 NO. 6 AWG BARE, SOLID COPPER GROUNDING ELECTRODE CONDUCTOR.
- GB GROUND BUS
- NB NEUTRAL BUS
- Ground Rod

TRAFFIC SIGNAL GROUNDING DIAGRAM

ALL WIRES SHALL BE NO. 6 AWG STRANDED COPPER CONDUCTORS WITH XLP INSULATION UNLESS OTHERWISE INDICATED. THE INSULATION COLOR SHALL BE GREEN.

FILE NAME = p:\0070081_Urbana - Main Street HSIP\Plans\sheet\08.traffic signal.dgn	DESIGNED - JAJ	REVISED -	STATE OF ILLINOIS DEPARTMENT OF TRANSPORTATION	MAIN STREET & RACE STREET TRAFFIC SIGNAL PLANS TRAFFIC SIGNAL DETAILS		F.A.U. RTE. 7124	SECTION 11-00510-00-TL	COUNTY CHAMPAIGN	TOTAL SHEETS 12	SHEET NO. 12
PLOT DATE = 1/15/2013 9:08:20 PM	DRAWN - KLR	REVISED -		SCALE: NONE	SHEET NO. 12 OF 12 SHEETS	STA. TO STA.	MAIN STREET		CONTRACT NO. 91481	
	CHECKED - SMW	REVISED -				FED. ROAD DIST. NO.		ILLINOIS		FED. AID PROJECT
	DATE - 01/2013	REVISED -								