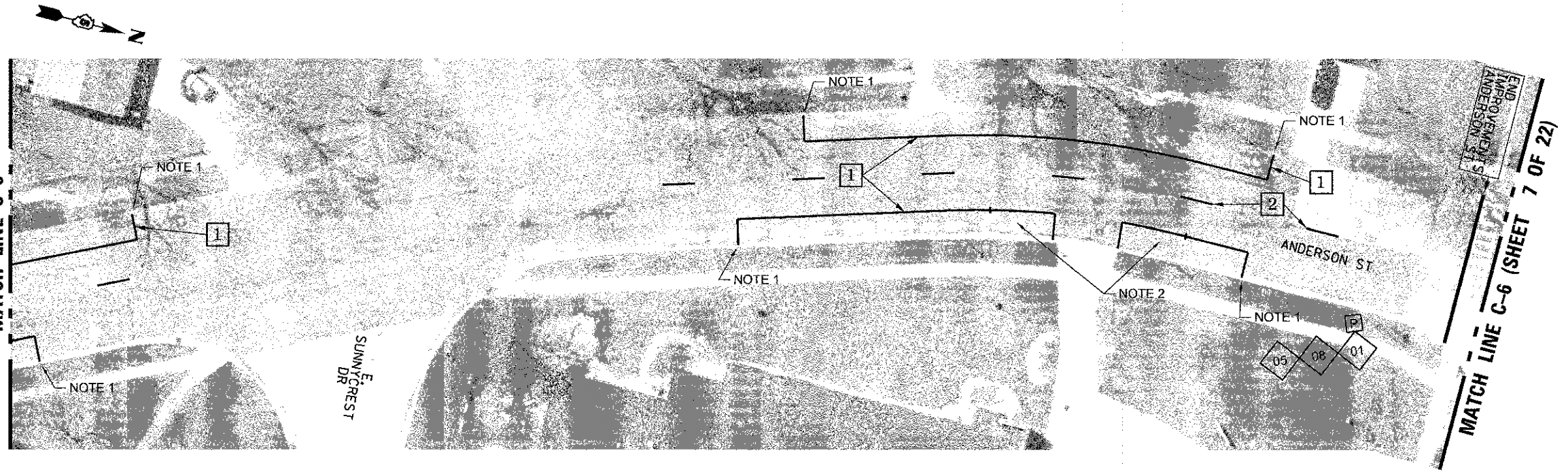
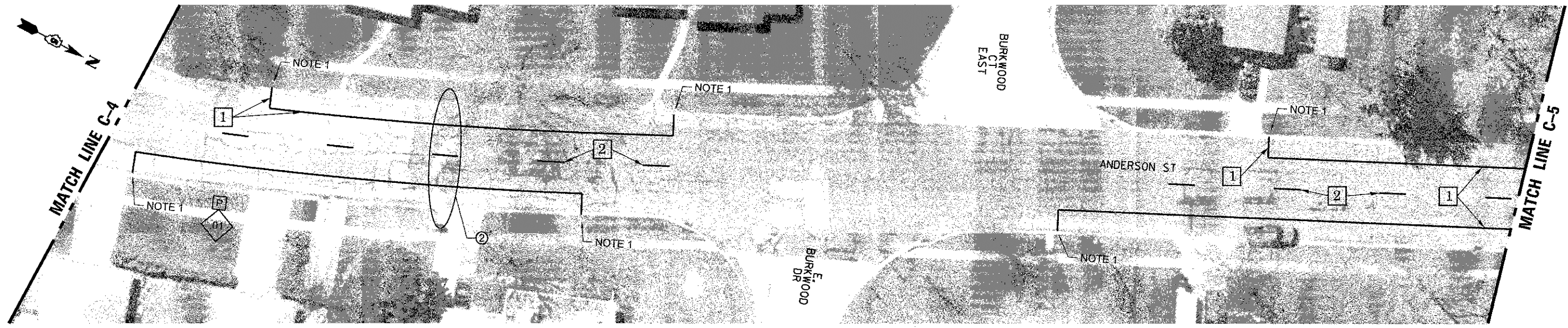
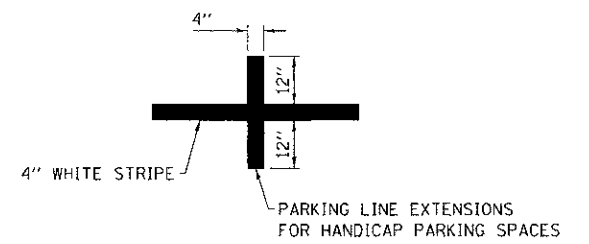


0' 20' 40'
SCALE: 1"=40'-0"



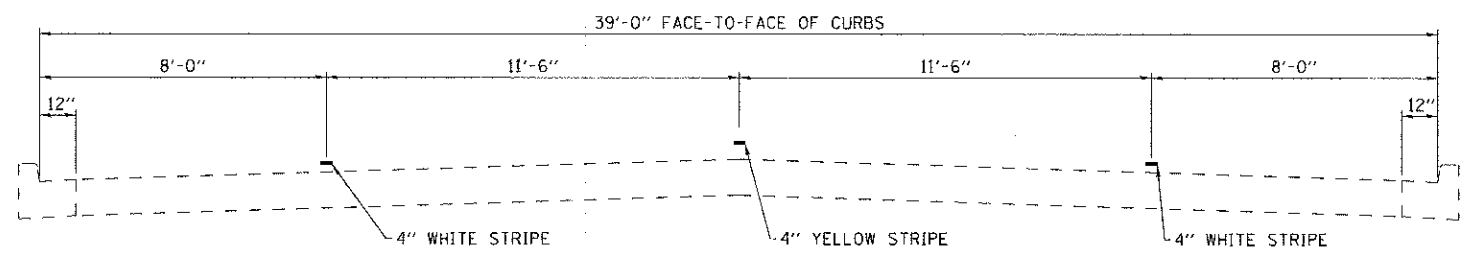
NOTE 1:
THE 4" WHITE PAVEMENT MARKING LINE TERMINATES AT THE LIMIT OF THE YELLOW PAINTED CURB UNLESS NOTED OTHERWISE

NOTE 2:
THE EXISTING HANDICAP PARKING SHALL BE MAINTAINED.

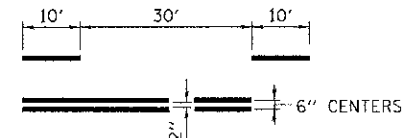


SIGN LEGEND			
01	BIKE ROUTE (D11-1)		
02	BIKE LANE (R3-17)		
03	MAY USE FULL LANE (R4-11)		
04	NO PARKING THIS SIDE OF STREET		
05	BIKE ROUTE ARROW LEFT AND RIGHT (M6-4)		
06	BIKE ROUTE ARROW RIGHT (M6-1)		
07	BIKE ROUTE ARROW LEFT (M6-1)		
08	BIKE ROUTE ARROW AHEAD (M6-3)		
09	AHEAD (R3-17aP)		
10	ENDS (R3-17bP)		

- 2 4" SKIP-DASH YELLOW
- 6 4" DOUBLE YELLOW



2 TYPICAL FOR PAVEMENT MARKING ANDERSON STREET
COLORADO AVENUE TO FLORIDA AVENUE



PAVEMENT MARKING LEGEND	
1	4" WHITE
2	4" YELLOW
3	6" WHITE
4	12" YELLOW
5	12" WHITE
6	4" DOUBLE YELLOW

PRINTED BY: ESCA
 PROJECT NO. 102004
 PLOT DATE: 1/30/2013
 2:23:45 PM