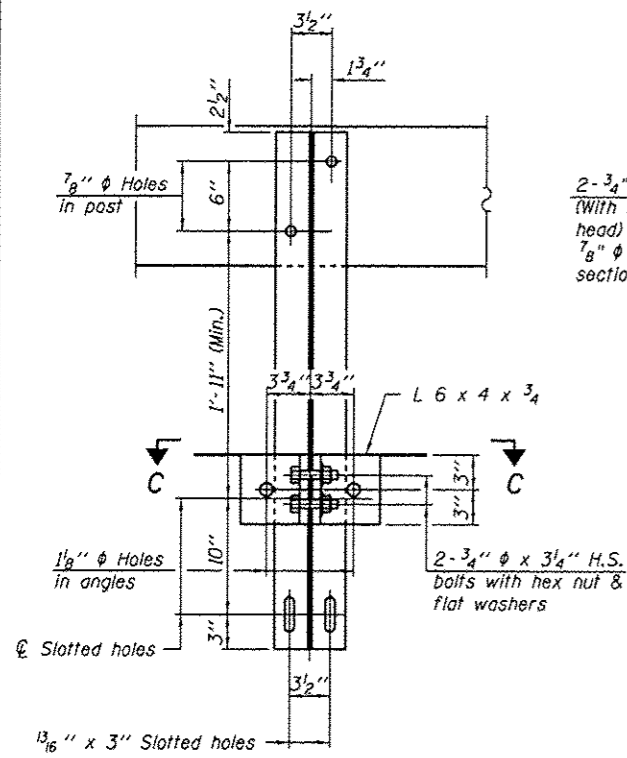
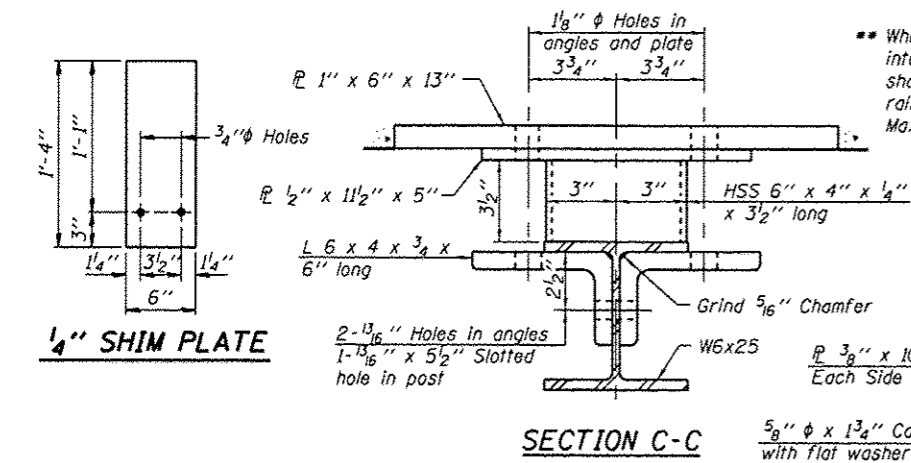


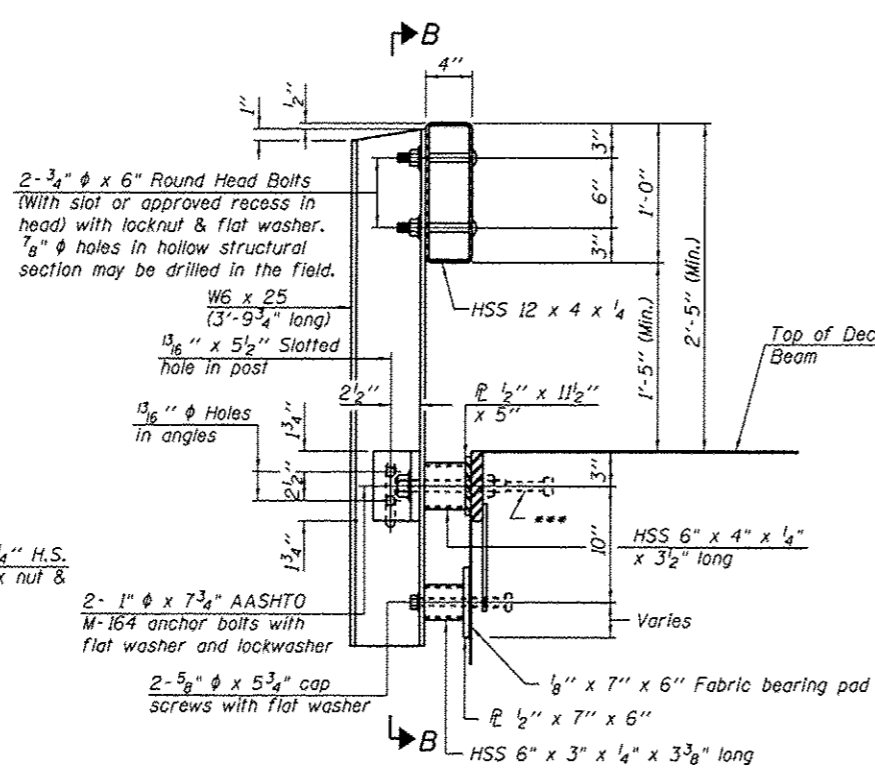
VIEW A-A  
ROUND HEAD BOLT



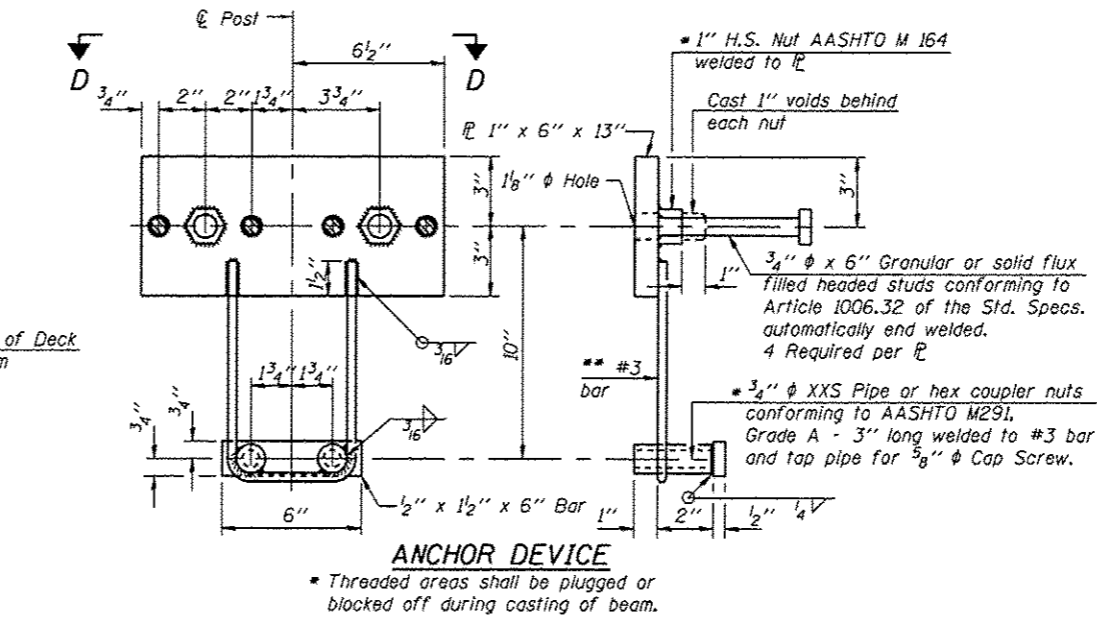
SECTION B-B



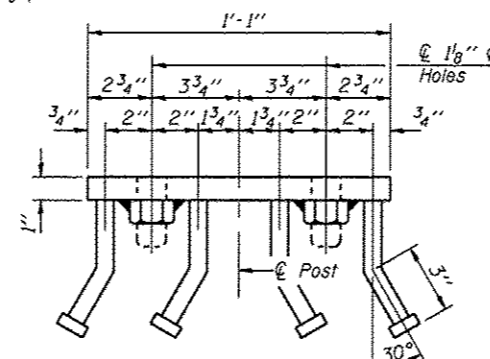
SECTION C-C



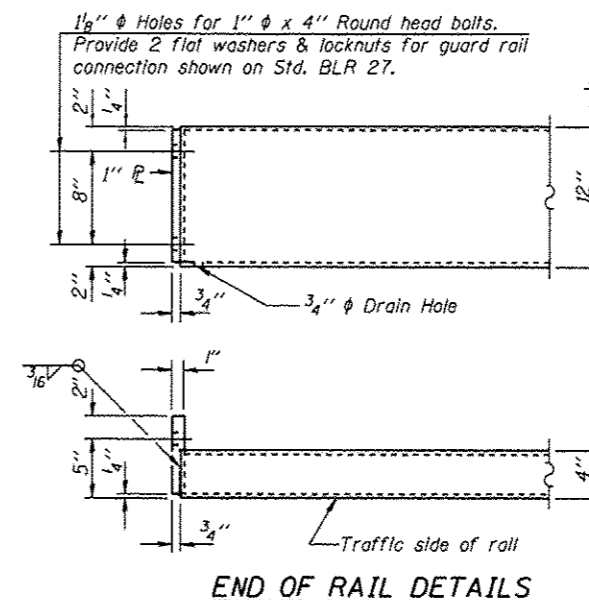
SECTION AT RAILING POST



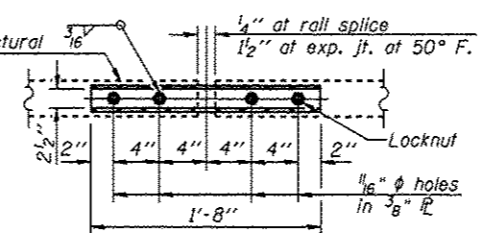
ANCHOR DEVICE



VIEW D-D

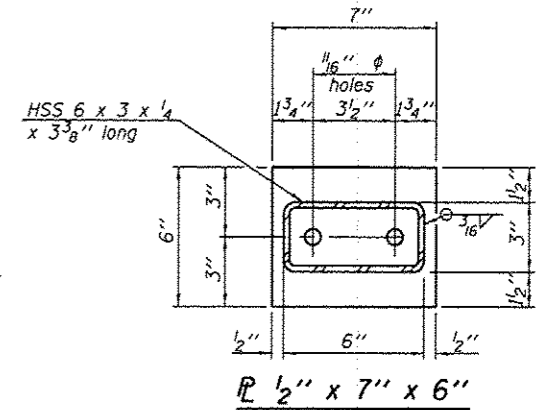


END OF RAIL DETAILS



PLAN-BOTT. SPLICE TYPICAL

Notes:  
 All field drilled holes shall be coated with an approved zinc rich paint before erection.  
 For multi-span bridges, sufficient 1/4" x 6" x 1'-2" galvanized steel shims shall be provided to align rail between adjacent spans. Cost included with Steel Railing, Type S1.  
 All steel rail elements shall be galvanized according to Article 509.05 of the Standard Specifications.  
 \*\*\* The studs of the anchor devices shall be placed below the top reinforcement bars and the outermost longitudinal reinforcement bar shall be placed directly above the studs of the rail post anchor device.



BILL OF MATERIAL

Item	Unit	Quantity
Steel Railing, Type S1	Foot	131

STEEL RAILING, TYPE S-1  
 STRUCTURE NO. 059-3329

R-23A 5-16-08 (10'-9" Maximum Post Spacing)

**CEC** Cummins Engineering Corporation  
 Civil and Structural Engineering

JOB = 2228	DESIGNED	A.A.M.
FILE = 2228rail.dgn	CHECKED	M.D.C.
DATE = 5/14/2009	DRAWN	T.S.H.
	CHECKED	M.D.C.

SECTIONS AT RAIL SPLICE

Sheet	RTE.	SECTION	COUNTY	TOTAL SHEETS	SHEET NO.
5 of 7	CH 10	08-00092-00-BR	MACOUPIN	23	14
CONTRACT NO.					93595
FED. ROAD DIST. NO.					ILLINOIS FED. AID PROJECT