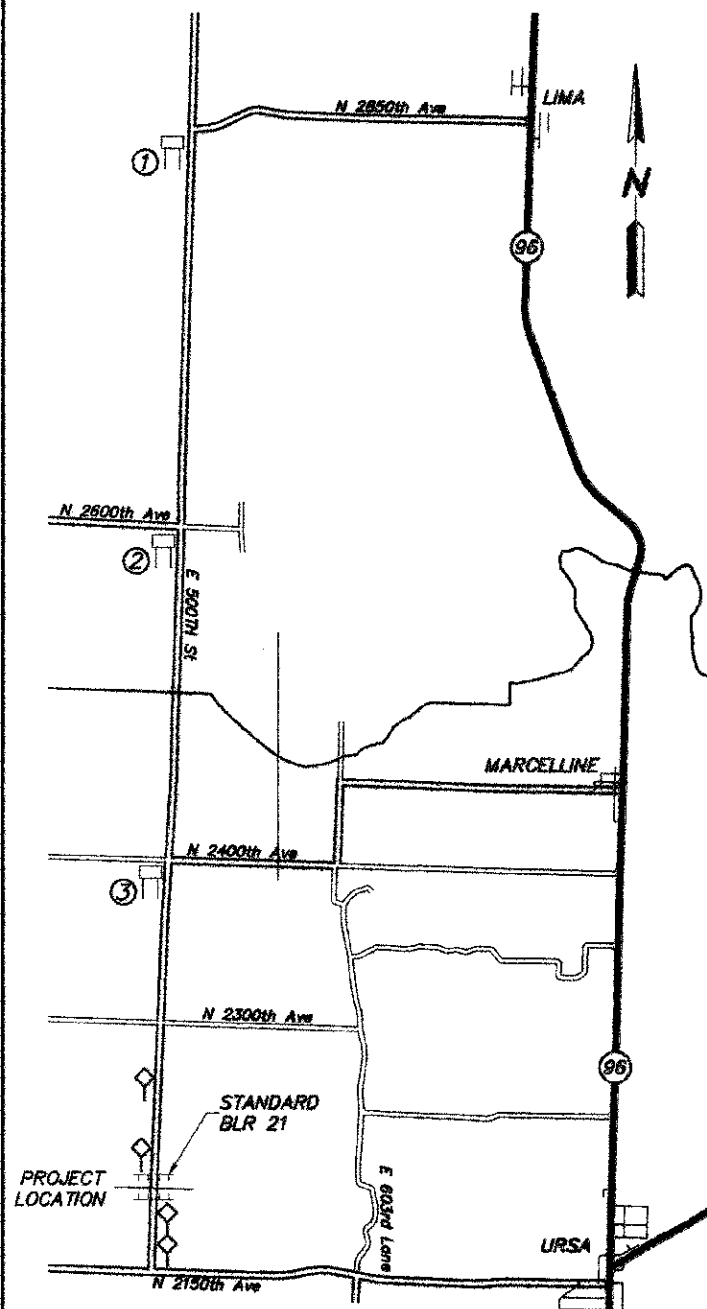


TRAFFIC CONTROL AND PROTECTION

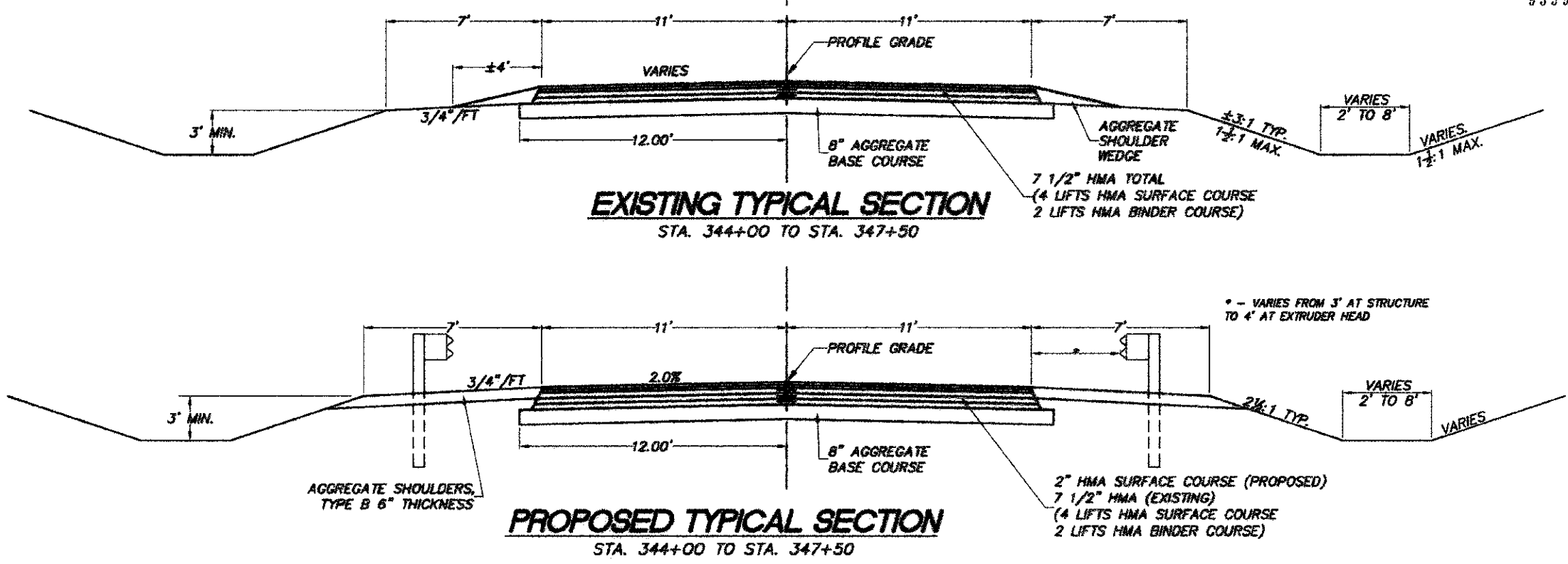


- ① R-11-3a SIGN
ROAD CLOSED
6.5 MILES AHEAD
LOCAL TRAFFIC ONLY
- ② R-11-3a SIGN
ROAD CLOSED
4 MILES AHEAD
LOCAL TRAFFIC ONLY
- ③ R-11-3a SIGN
ROAD CLOSED
2 MILES AHEAD
LOCAL TRAFFIC ONLY

COUNTY	ROUTE	SECTION	SHT. NO.
ADAMS	FAS 1800	11-00078-02-BR	3

TRAFFIC CONTROL TYPICAL SECTIONS
HMA SURFACE REMOVAL DETAILS
93598

TYPICAL SECTIONS



HMA SURFACE REMOVAL, VARIABLE DEPTH

