

PROJECT NO. RS-1600(120)			
COUNTY	ROUTE	SECTION	SHT. NO.
ADAMS	FS 1000	11-00078-02-BR	4
STA. 343+00 TO STA. 348+50			
93598			

STA. - STA.	TRAFFIC BARRIER TERMINAL, TYPE SA	STEEL PLATE BEAM GUARDRAIL, TYPE A	TRAFFIC BARRIER TERMINAL, TYPE 1 (SPECIAL) TANGENT	GUARDRAIL REMOVAL
LT. STA. 344+75.0 - 348+83.0	1	12.5 FT.	1	75 FT.
RT. STA. 344+75.0 - 348+83.0	1	12.5 FT.	1	75 FT.
LT. STA. 348+03.0 - 348+83.0	1	12.5 FT.	1	75 FT.
RT. STA. 348+03.0 - 348+83.0	1	12.5 FT.	1	75 FT.

SECTION 11 - T.I.N. - R.9W. - 4th P.M.

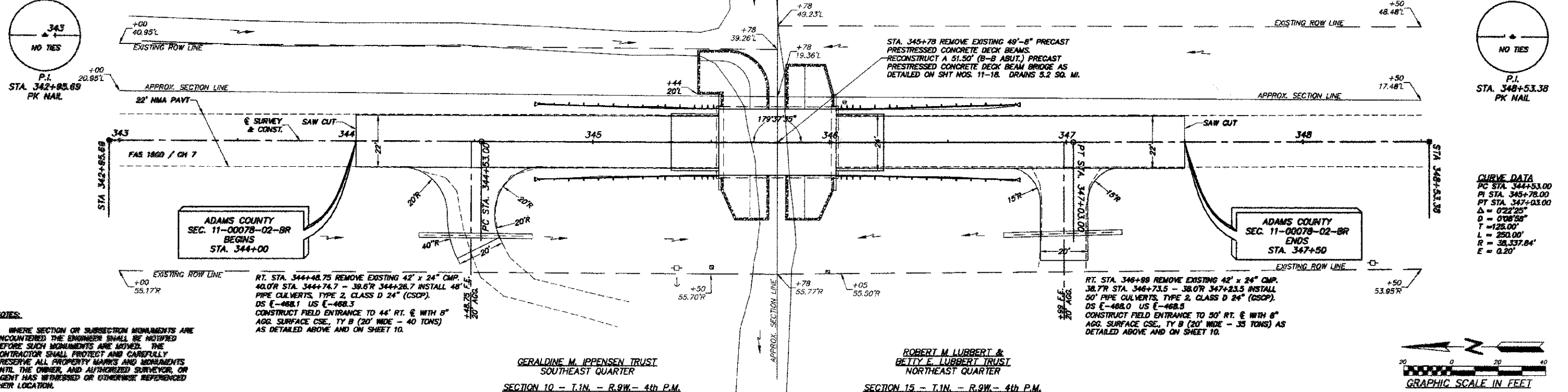
SECTION 14 - T.I.N. - R.9W. - 4th P.M.

RUSSELL P. & MARY K. SHRIVER
SOUTHWEST QUARTER

SPIRIT KNOB FARMS, INC.
W 1/2 OF THE NW 1/4

GERALDINE M. IPPENSEN TRUST
SOUTHEAST QUARTER

ROBERT M. LUBBERT &
BETTY E. LUBBERT TRUST
NORTHEAST QUARTER



ADAMS COUNTY
SEC. 11-00078-02-BR
BEGINS
STA. 344+00

ADAMS COUNTY
SEC. 11-00078-02-BR
ENDS
STA. 347+50

CURVE DATA
PC STA. 344+53.00
PI STA. 345+78.00
PT STA. 347+03.00
Δ = 022°25'
D = 078°50'
T = 128.00'
L = 292.00'
R = 38,337.84'
E = 0.20'

NOTES:
1. WHERE SECTION OR SUBSECTION MONUMENTS ARE ENCOUNTERED THE ENGINEER SHALL BE NOTIFIED BEFORE SUCH MONUMENTS ARE MOVED. THE CONTRACTOR SHALL PROTECT AND CAREFULLY PRESERVE ALL PROPERTY MARKS AND MONUMENTS UNTIL THE OWNER, AND AUTHORIZED SURVEYOR, OR AGENT HAS WITNESSED OR OTHERWISE REFERENCED THEIR LOCATION.

RT. STA. 344+48.75 REMOVE EXISTING 42" x 24" CMP. 40.0'R STA. 344+74.7 - 39.6'R 344+26.7 INSTALL 48" PIPE CULVERTS, TYPE 2, CLASS D 24" (GSCP). DS E-488.1 US E-488.3 CONSTRUCT FIELD ENTRANCE TO 44' RT. E WITH 6" AGG. SURFACE CSE, TY B (20' WIDE - 40 TONS) AS DETAILED ABOVE AND ON SHEET 10.

RT. STA. 346+99 REMOVE EXISTING 42" x 24" CMP. 38.7'R STA. 346+73.5 - 38.0'R 347+23.5 INSTALL 50" PIPE CULVERTS, TYPE 2, CLASS D 24" (GSCP). DS E-488.0 US E-488.5 CONSTRUCT FIELD ENTRANCE TO 50' RT. E WITH 6" AGG. SURFACE CSE, TY B (20' WIDE - 35 TONS) AS DETAILED ABOVE AND ON SHEET 10.

