

COUNTY	ROUTE	SECTION	SHT. NO.
ADAMS	FAS 1600	11-00078-02-BR	71
BRIDGE GENERAL PLAN & ELEVATION			
BRIDGE SHEET 1 OF 8			93598

GENERAL NOTES

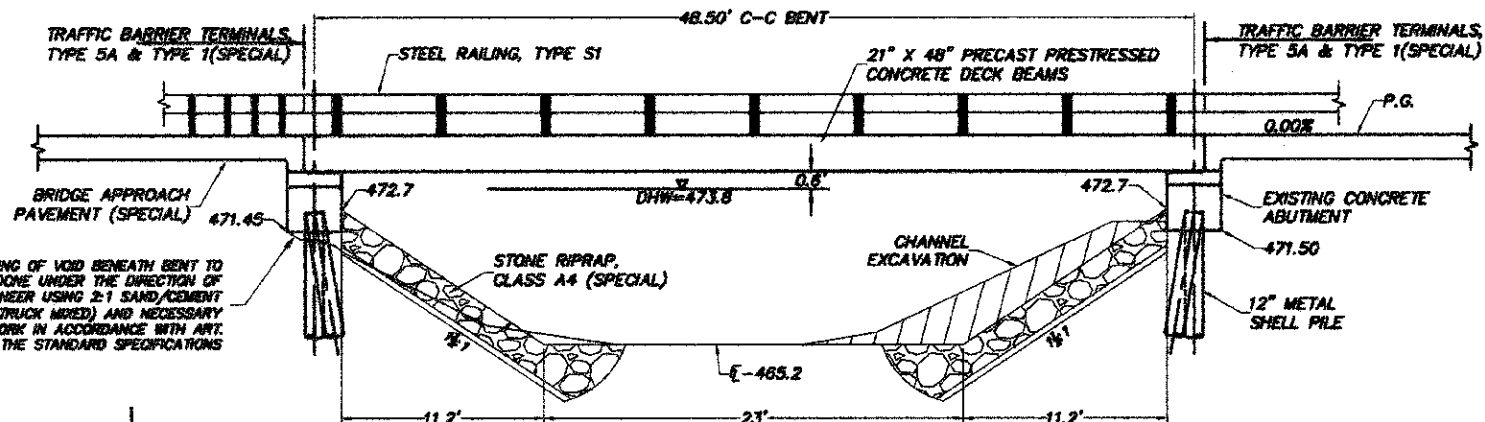
1. WATERPROOFING MEMBRANE SYSTEM SHALL BE REQUIRED ON THIS PROJECT.
2. ALL GROUT ON THIS PROJECT SHALL BE NON-SHRINK.
3. STONE RIPRAP SHALL BE PLACED TO THE DIMENSIONS SHOWN OVER A GEOTECHNICAL FABRIC IN ACCORDANCE WITH THE RIPRAP PLACEMENT DETAIL AND APPLICABLE SPECIAL PROVISIONS.
4. THE ENGINEER RESERVES THE RIGHT TO ALTER THE RIPRAP PLACEMENT DETAIL AND/OR ADJUST QUANTITIES TO FIT FIELD CONDITIONS.
5. REINFORCEMENT BARS SHALL CONFORM TO THE REQUIREMENTS OF ASTM A706, GRADE 60.
6. CORROSION INHIBITOR WILL BE REQUIRED IN THE PRODUCTION OF DECK BEAMS ON THIS PROJECT.
7. PLAN DIMENSIONS AND DETAILS RELATIVE TO EXISTING PLANS ARE SUBJECT TO NOMINAL CONSTRUCTION VARIATIONS. THE CONTRACTOR SHALL FIELD VERIFY EXISTING DIMENSIONS AND MAKE NECESSARY APPROVED ADJUSTMENTS PRIOR TO CONSTRUCTION OR ORDERING OF MATERIALS. SUCH VARIATIONS SHALL NOT BE CAUSE FOR A CHANGE IN SCOPE OF WORK, HOWEVER, THE CONTRACTOR WILL BE PAID FOR THE QUANTITY ACTUALLY FURNISHED AT THE UNIT PRICE BID FOR THE WORK.
8. REINFORCEMENT BARS DESIGNATED (e) SHALL BE EPOXY COATED.

BM - CHISELED "+" IN TOP OF WINGWALL
16' LT. STA. 345+53
ELEV. = 476.72 (78Q)

EXISTING STRUCTURE - 49'-8" x 30' PPC
DECK BEAM BRIDGE (21" DEPTH) ON
CONCRETE ABUTMENT CAPS WITH CONCRETE
PILING

SALVAGE - NONE

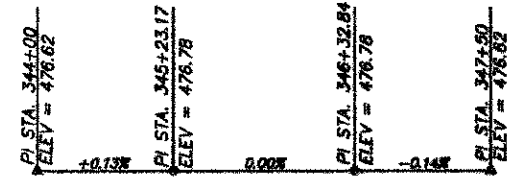
FILLING OF VOID BENEATH BENT TO
BE DONE UNDER THE DIRECTION OF
THE ENGINEER USING 2:1 SAND/CEMENT
GROUT (TRUCK MIXED) AND NECESSARY
FORMWORK IN ACCORDANCE WITH ART.
109.04 OF THE STANDARD SPECIFICATIONS



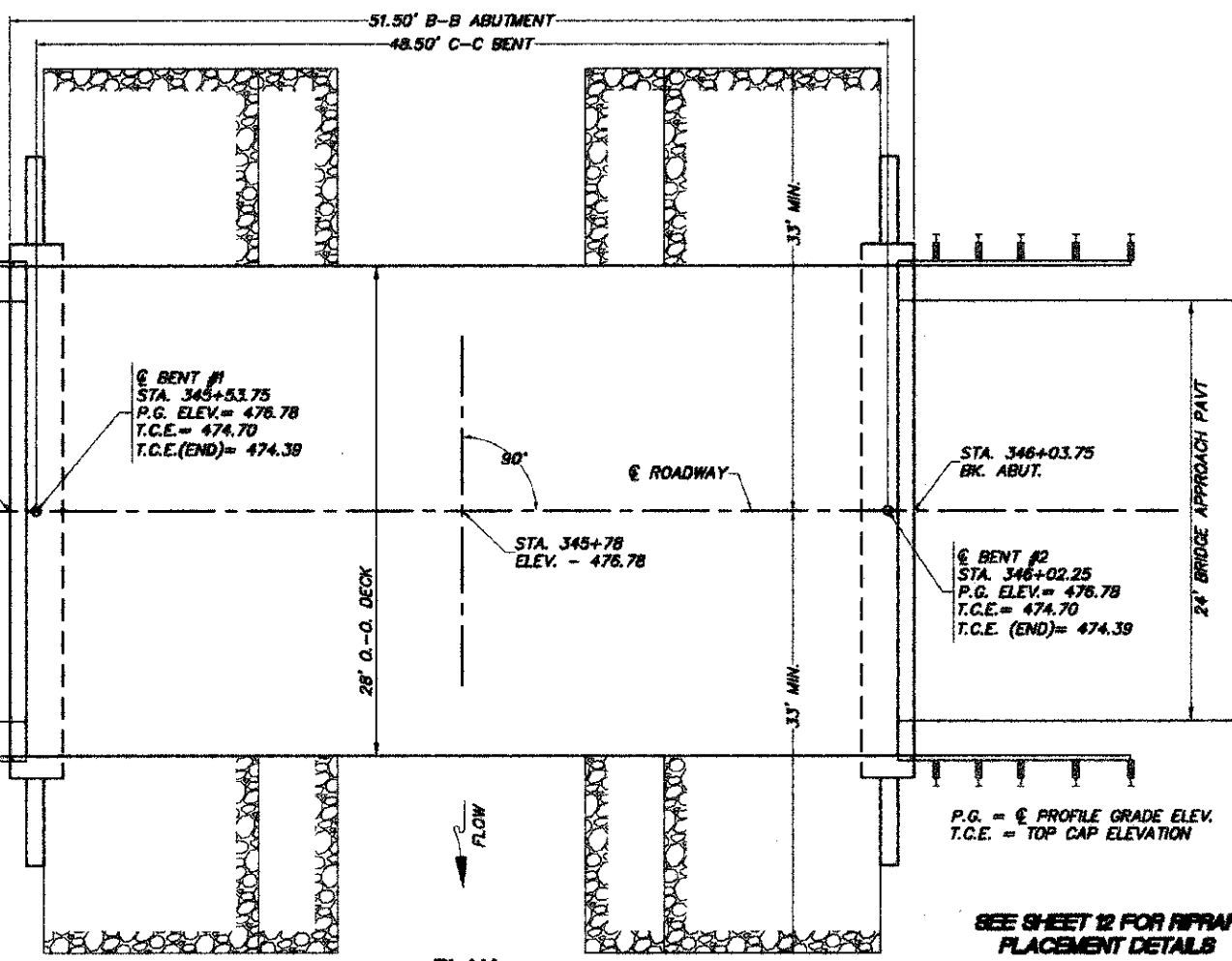
ELEVATION
SHOWN ALONG & ROADWAY

TOTAL BILL OF MATERIAL

ITEM	UNIT	SUPER.	SUBSTRUCTURE		TOTAL
			PIER	ABUT.	
CHANNEL EXCAVATION	CU. YD.				148
STONE RIPRAP, CLASS A4 (SPECIAL)	TON				360
HOT-MIX ASPHALT SURFACE CSE., MIX "C", N50	TON	21.9			21.9
REMOVAL OF EXISTING PRECAST PRESTRESSED CONCRETE DECK BEAMS	SQ. FT.	1,490			1,490
CONCRETE STRUCTURES	CU. YD.			5.6	5.6
P.P. CONCRETE DECK BEAMS 21" DEPTH	SQ. FT.	1,391			1,391
REINFORCEMENT BARS, EPOXY COATED	POUND			570	570
STEEL RAILING, TYPE S1	FOOT	100			100
WATERPROOFING MEMBRANE SYSTEM	SQ. YD.	155			155
BRIDGE APPROACH PAVEMENT, SPECIAL	SQ. YD.	107			107
NAME PLATES	EACH	1			1



PROFILE



PLAN

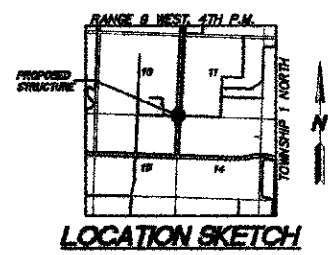
INDEX OF SHEETS

1. BRIDGE GENERAL PLAN AND ELEVATION
2. RIPRAP PLAN
3. TRAFFIC BARRIER TERMINAL INSTALLATION
4. PPC DECK BEAM SUPERSTRUCTURE
5. 21"x48" PPC DECK BEAM
6. 21"x48" PPC DECK BEAM DETAILS
7. PPC DECK BEAMS MODIFIED PILE BENT ABUTMENT
8. STEEL RAILING, TYPE S1
9. BRIDGE APPROACH PAVEMENT, SPECIAL

DESIGN STRESSES

(PRESTRESSED UNITS) (FIELD UNITS)
f_{ci} = 5.0 KSI f_c = 3.5 KSI
f_c = 6.0 KSI f_y = 60 KSI
f_y = 60 KSI

DESIGN SCOUR ELEVATION (FT.)	
BENT #1	BENT #2
471.45	471.50



LOCATION SKETCH

DRAINAGE DITCH
BUILT 20____ BY
ADAMS COUNTY
SEC. 11-00078-02-BR
PROJECT RS-1600(120)
STATION 345+78
STR. NO. 001-3235 LOADING HL-93

WATERWAY INFORMATION

FLOOD DESIGN	FLOOD FREQUENCY (YEAR)	FLOW VOLUME (CFS)	OPENING SQ. FT.		NATURAL H.W.E.	HEAD - FT.		HEADWATER ELEV.	
			EXISTING	PROPOSED		EXISTING	PROPOSED	EXISTING	PROPOSED
DESIGN	15	1,400	292	308		0.0	0.0		473.6
BASE	100	2,500							
OVERTOPPING									
MAX. CALC									

THE STRUCTURE HAS BEEN DESIGNED TO BE STABLE FOR SCOUR CONDITIONS IN ACCORDANCE WITH THE FHWA TECHNICAL ADVISORY T-5140.23 "EVALUATING SCOUR AT BRIDGES" AND HYDRAULIC ENGINEER CIRCULAR 18 - EVALUATING SCOUR AT BRIDGES. THE REQUIREMENTS OF THE IDNR DIVISION OF WATER RESOURCES HAVE BEEN FULFILLED WITH STATEWIDE PERMIT NO. 12.

I Certify That to the Best of my Knowledge, Information and Belief, the Revised Standard Detail Sheets and/or Special Component Sheets Included with the Standard Bridge Detail Sheets are Structurally Adequate for the Design Loading Shown on the Plans and Comply with the Requirements of the Current AASHTO Standard Specifications for Highway Bridges.

Matthew R. Frankenhoff
1-9-13
Date
Licensed Structural Engineer

DESIGN SPECIFICATIONS

AASHTO LRFD BRIDGE DESIGN SPECIFICATIONS - 5th ED. WITH 2010 INTERIMS.

LOADING HL-93

ALLOW 50#/SQ.FT. FOR FUTURE WEARING SURFACE

LETTERING FOR NAME PLATE
RAIL MOUNT NAME PLATE AT THE SAME CORNER OF BRIDGE AS EXISTING NAMEPLATE (SEE STD. 515001)

BRIDGE GENERAL PLAN & ELEVATION
STRUCTURE NO. 001-3235
DRAINAGE DITCH
ADAMS COUNTY
SEC. 11-00078-02-BR
STATION 345+78

