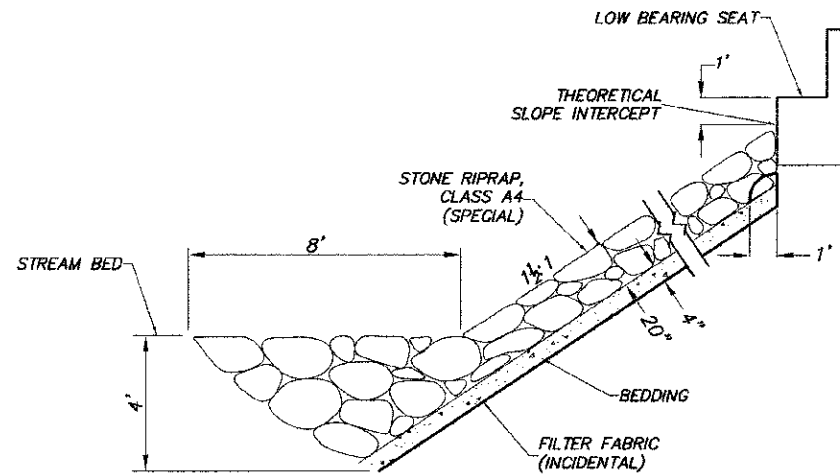
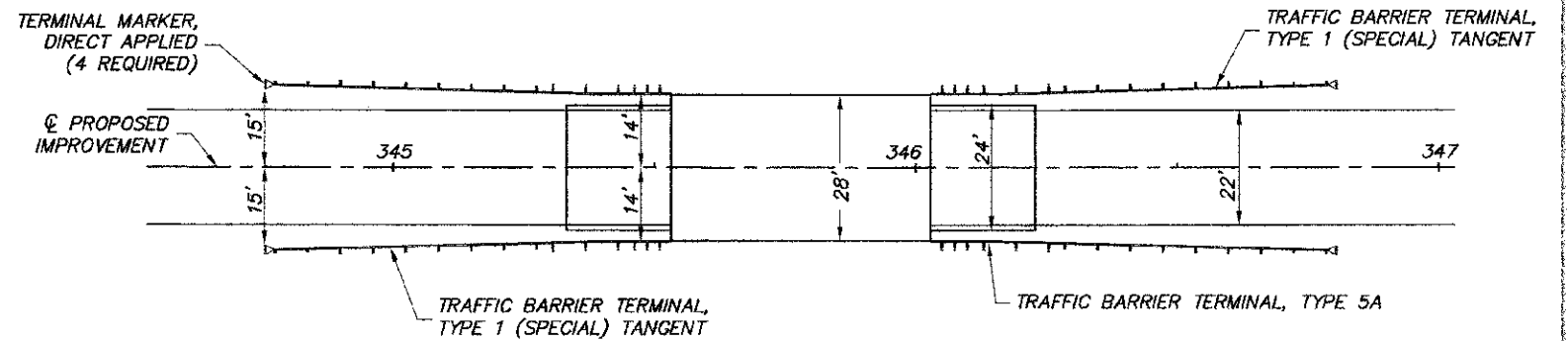


COUNTY	ROUTE	SECTION	SHT. NO.
ADAMS	FAS 1600	11-00078-02-BR	12
RIPRAP PLAN			
TRAFFIC BARRIER TERMINAL INSTALLATION			
BRIDGE SHEET 2 OF 8 93598			

TRAFFIC BARRIER TERMINAL INSTALLATION



RIPRAP PLACEMENT DETAIL



GUARD RAIL SCHEDULE

STA. - STA.	TRAFFIC BARRIER TERMINAL, TYPE 5A	STEEL PLATE BEAM GUARDRAIL, TYPE A	TRAFFIC BARRIER TERMINAL, TYPE 1 (SPECIAL) TANGENT	GUARDRAIL REMOVAL
LT. STA. 344+75.2 - 345+53.0	1	12.5 FT.	1	75 FT.
RT. STA. 344+75.2 - 345+53.0	1	12.5 FT.	1	75 FT.
LT. STA. 346+03.0 - 346+80.8	1	12.5 FT.	1	75 FT.
RT. STA. 346+03.0 - 346+80.8	1	12.5 FT.	1	75 FT.

SEE STANDARD 630301 FOR SHOULDER WIDENING DETAILS

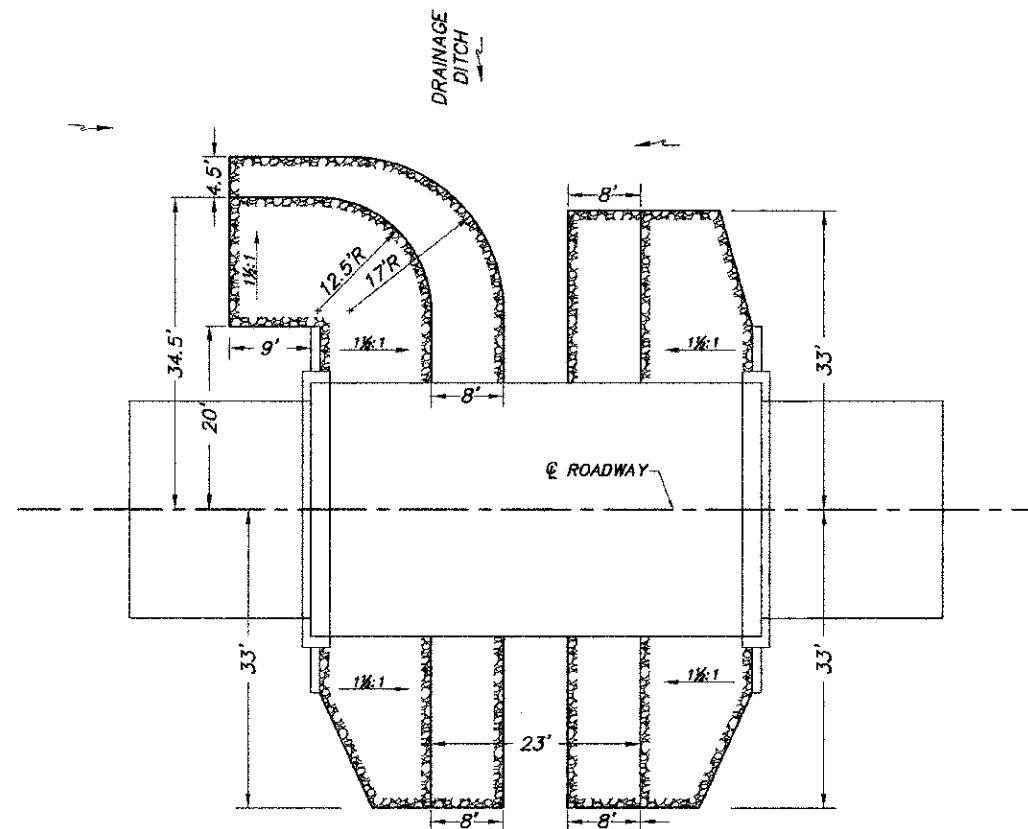
SUMMARY OF QUANTITIES

ITEM	UNIT	NO. ABUT.	SO. ABUT.	TOTAL
FILTER FABRIC FOR USE WITH RIPRAP	SQ. YD.	145	120	265*
STONE RIPRAP, CLASS A4 (SPECIAL)	TON	192	168	360

* INCIDENTAL TO UNIT PRICE BID FOR RIPRAP, SPECIAL

GENERAL NOTES:

- LAYOUT OF THE SLOPE PROTECTION SYSTEM MAY BE VARIED TO SUIT GROUND CONDITIONS IN THE FIELD AS DIRECTED BY THE ENGINEER.
- 1.6 TON/CY USED FOR RIPRAP QUANTITY CALCULATION.



RIPRAP LAYOUT

RIPRAP PLAN
 TRAFFIC BARRIER TERMINAL INSTALLATION
 STRUCTURE NO. 001-3235
 DRAINAGE DITCH
 ADAMS COUNTY
 SEC. 11-00078-02-BR
 STATION 345+78