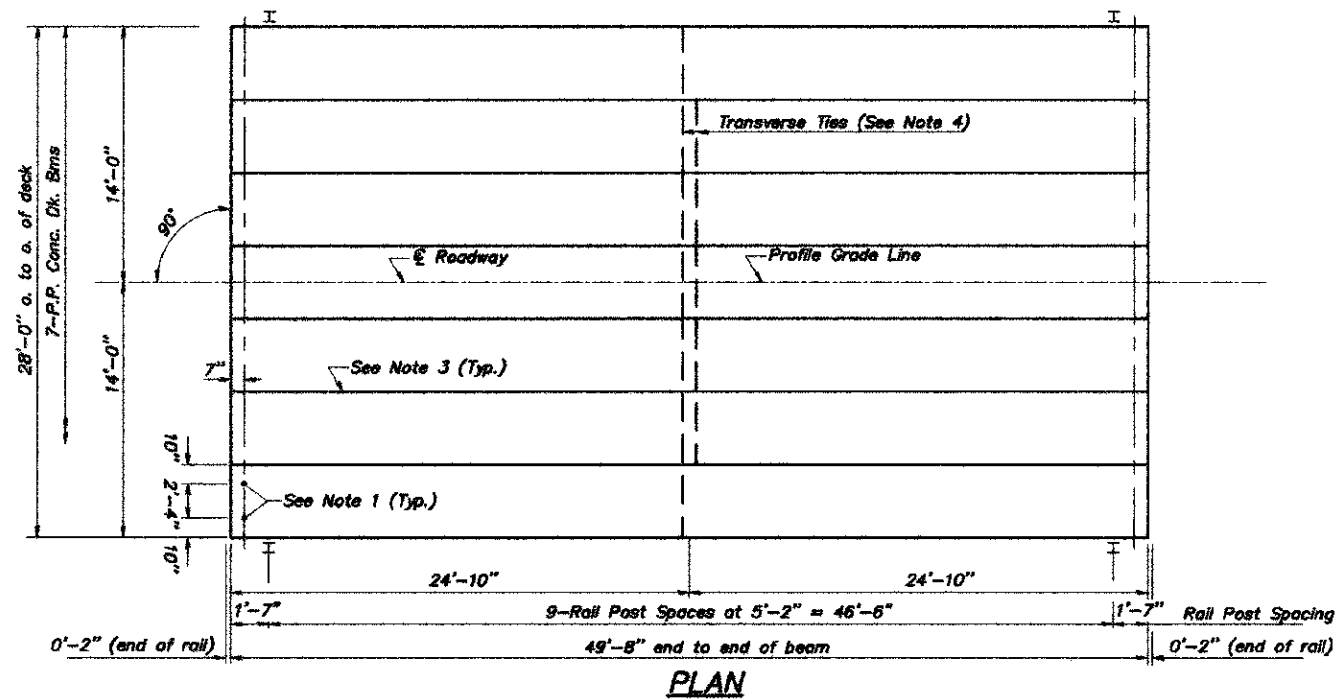
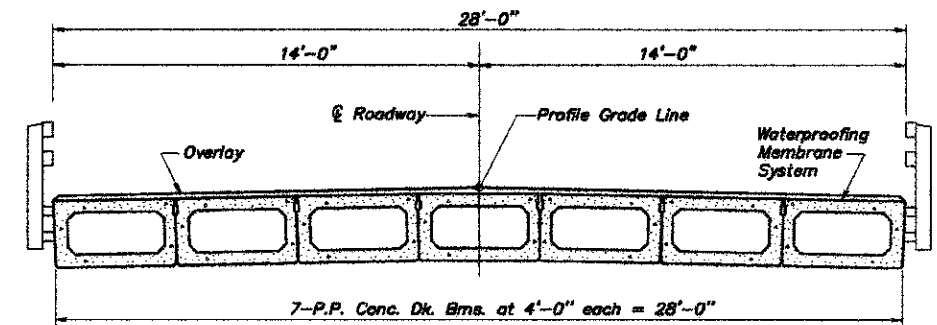


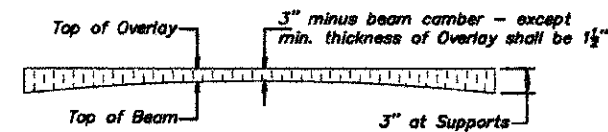
TYPICAL ELEVATIONS



PLAN



CROSS SECTION



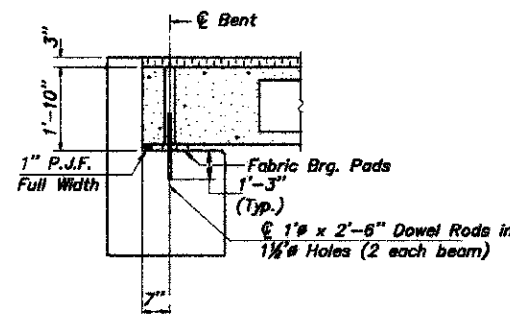
PROFILE OF OVERLAY

QUANTITIES FOR ONE SPAN

P.P. Conc. Dk. Bm. 21" Dp.	1,391 Sq. Ft.
Steel Railing, Type S-1	100 Ft.
PC Mortar Fairing Course*	298 Ft. 48"
Waterproofing Membrane System	155 Sq. Yds.

Note: Quantity of overlay for one span = 21.9 Tons  
 \* - Portland Cement Mortar Fairing Course to be considered incidental to P.P. Conc. Deck Beams

- NOTES**
- After beams have been erected, holes shall be drilled into substructure and anchor dowels placed. Dowel holes shall be filled with non-shrink grout to top of beam and allowed to cure min. 24 hrs. prior to grouting the shear keys.
  - Nominal 1" joint at  $\bar{C}$  Pier shall be filled with non-shrink grout.
  - Longitudinal keys shall be grouted.
  - The 1" rods in the transverse tie assembly shall be tightened to a snug fit and the threads set. Pockets that receive transverse tie bar outside shall be filled with grout after transverse tie assembly is in place.



SECTION AT ABUTTS.

(Along  $\bar{C}$  Beams)

PPC DECK BEAM SUPERSTRUCTURE			
28' RDWY.	21" BMS.	49'-8" SPAN	0' SKEW

STRUCTURE NO. 001-3235  
 DRAINAGE DITCH  
 ADAMS COUNTY  
 SEC. 11-00078-02-BR  
 STATION 345+78