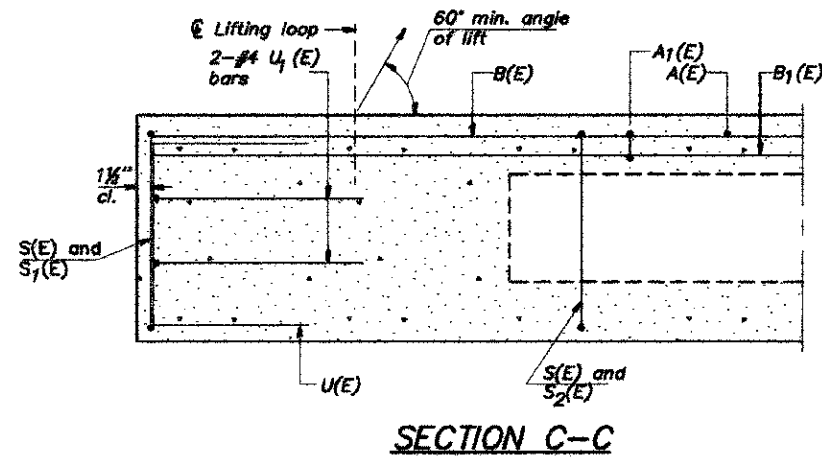
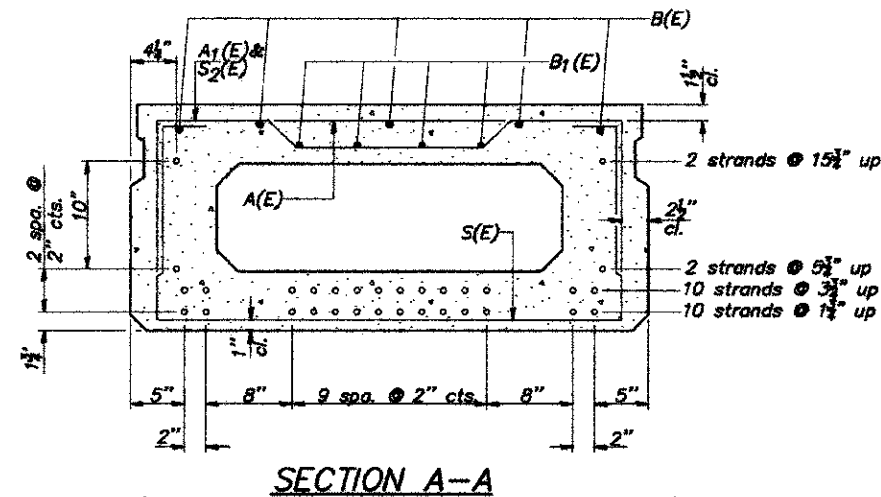
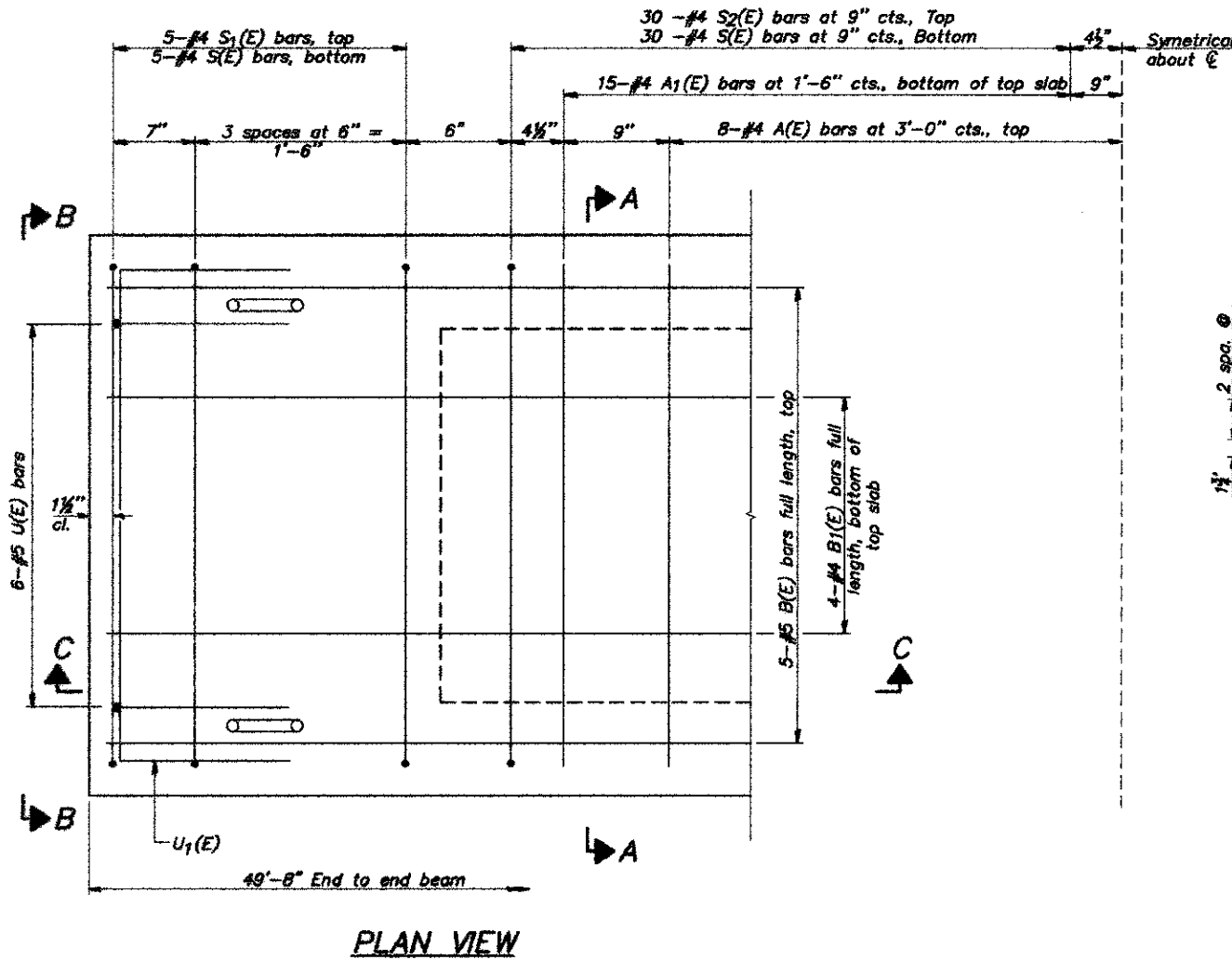
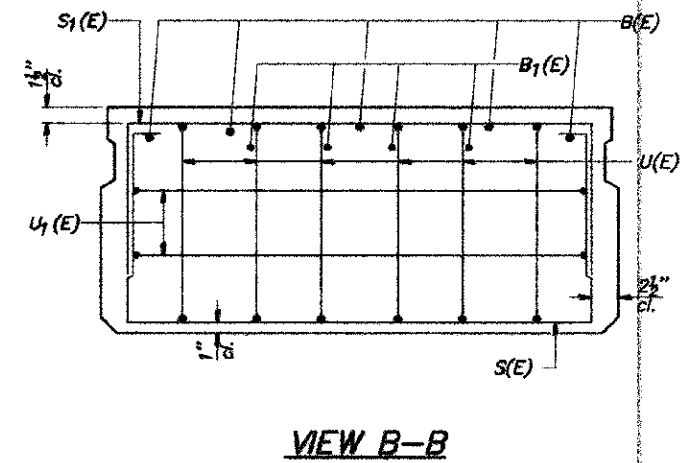
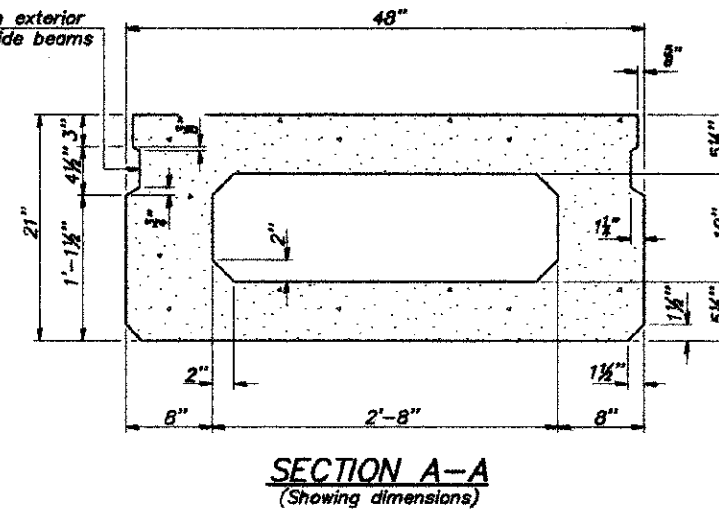


COUNTY	ROUTE	SECTION	SHT. NO.
ADAMS	FAS 1600	11-00078-02-BR	14
21" x 48" PPC DECK BEAM			

*Rail post anchor devices (specified elsewhere) to be cast into exterior face of outside beam.



*Omit key on exterior face of outside beams



Note: Place the number of strands specified in each row symmetrically about the centerline of beam in the permissible strand locations shown.

BAR LIST
ONE BEAM ONLY
(For information only)

Bar	No.	Size	Length	Shape
A(E)	15	#4	3'-7"	—
A1(E)	30	#4	3'-10"	—
B(E)	5	#5	49'-5"	—
B1(E)	4	#4	49'-5"	—
S(E)	70	#4	7'-5"	□
S1(E)	10	#4	5'-11"	□
S2(E)	60	#4	6'-2"	□
U(E)	12	#5	4'-0"	□
U1(E)	4	#4	6'-0"	□

Note: See sheet 5 of 8 for additional details and Bill of Material.

MINIMUM BAR LAP

#4 bar = 2'-0"
#5 bar = 2'-6"

21" x 48" PPC DECK BEAM
STRUCTURE NO. 001-3235
DRAINAGE DITCH
ADAMS COUNTY
SEC. 11-00078-02-BR
STATION 345+78