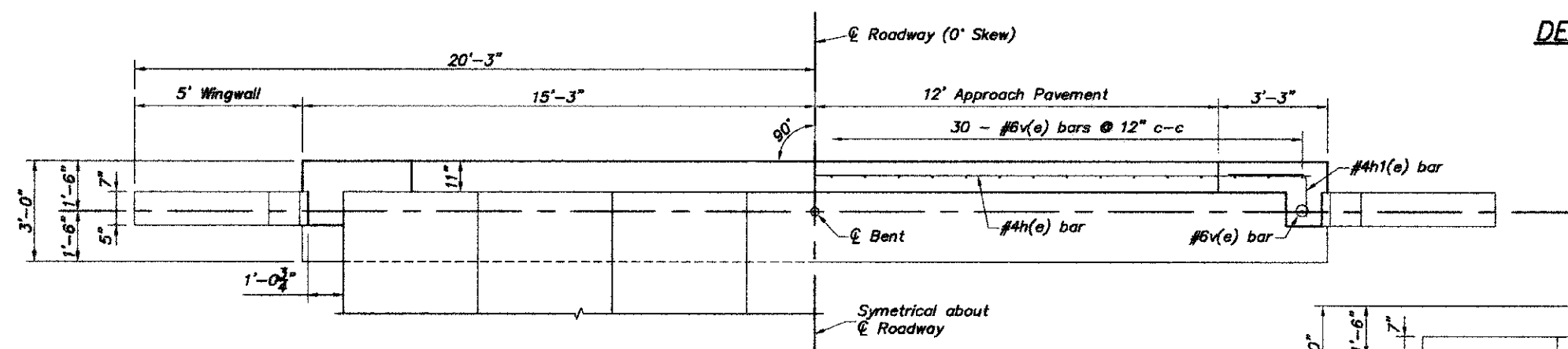


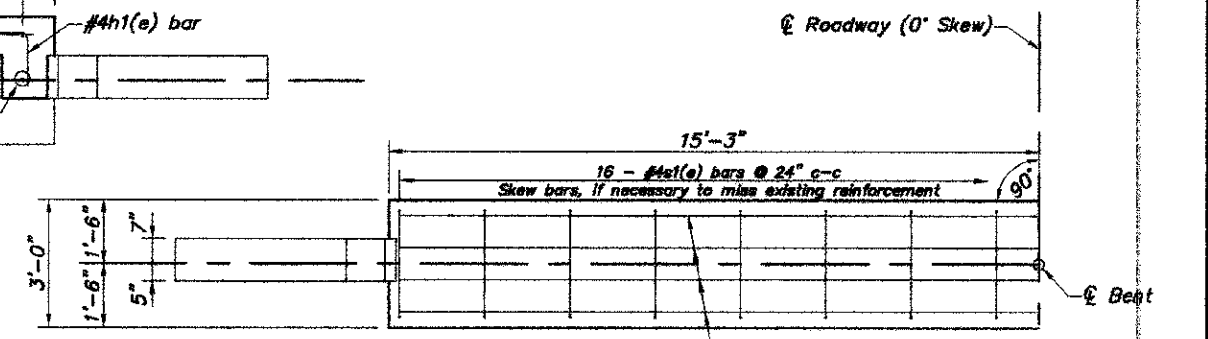
COUNTY	ROUTE	SECTION	SHT. NO.
ADAMS	FAS 1600	11-00078-02-BR	18
PPC DECK BEAMS MODIFIED PILE BENT ABUTMENT			BRIDGE SHEET 6 OF 8

**DESIGN STRESSES**

$f_c = 3,500 \text{ psi}$   
 $f_y = 60,000 \text{ psi}$

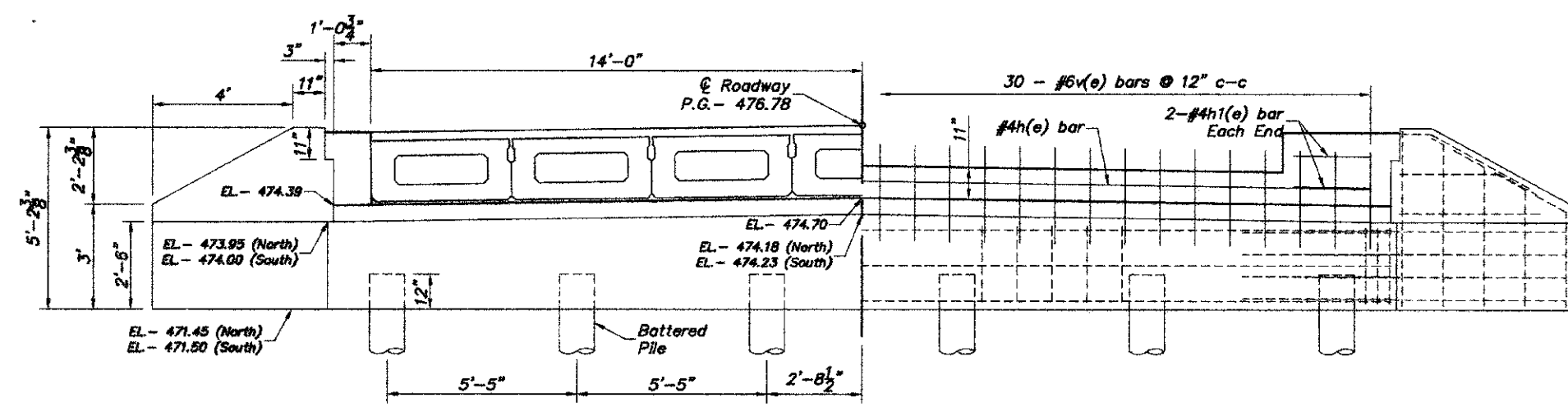


**PLAN - Backwall**



**PLAN - Cap Elevation Adjustment**

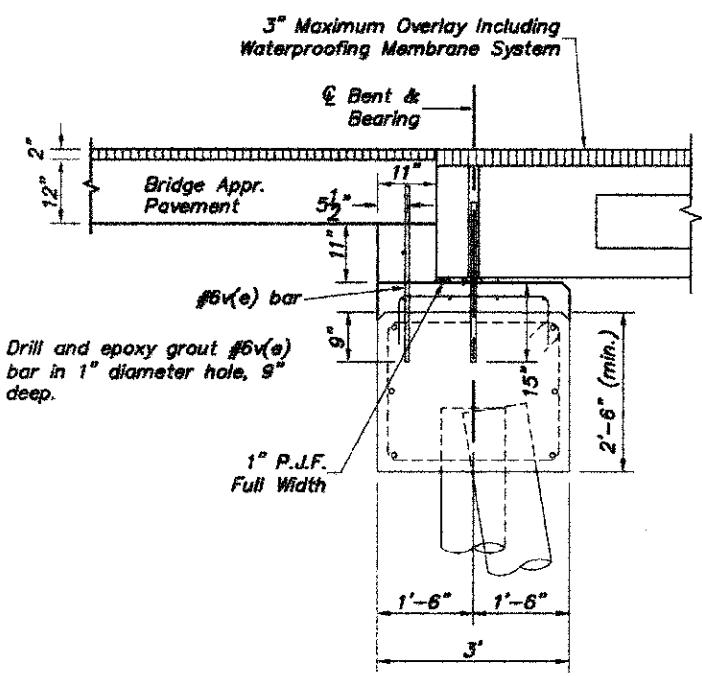
Existing dowel bars from deck removal to be cut flush with top of cap or holes to be filled with non-shrink grout. Top of existing cap to be sand blasted for bonded construction joint and to remove any deleterious material to the satisfaction of the Engineer.



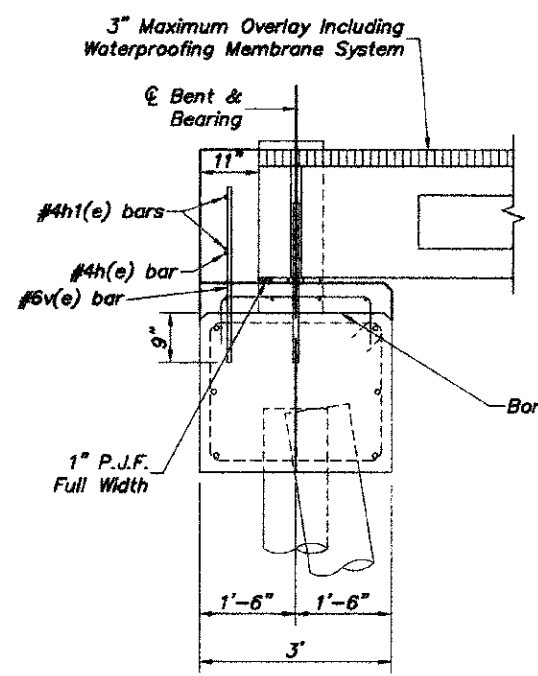
**ELEVATION**

**BILL OF MATERIALS - FOR ONE ABUTMENT**

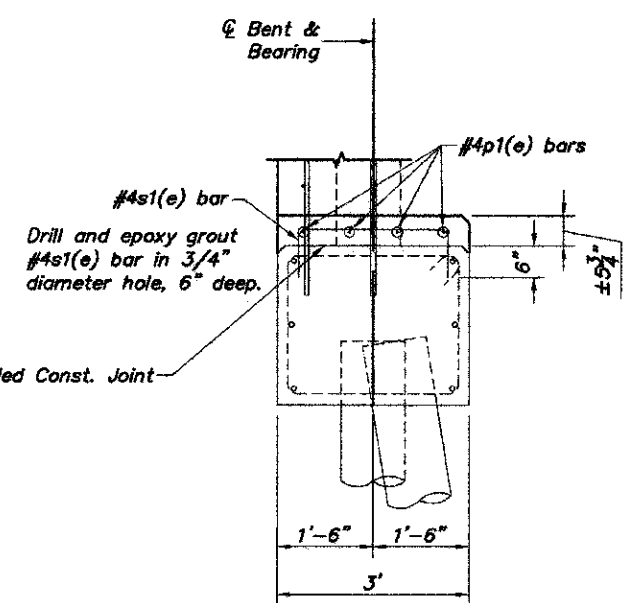
Bar	No.	Size	Length	Shape
h(e)	1	#4	29'-6"	—
h1(e)	4	#4	3'-6"	—
pl(e)	4	#4	30'-0"	—
s1(e)	16	#4	3'-10"	—
v(e)	32	#6	2'-9"	—
Concrete Structures				2.8 cu.yd.
Reinforcement Bars				282 lbs.



**SECTION THRU ABUTMENT AT BRIDGE APPROACH PAV'T**  
(At Right Angles)

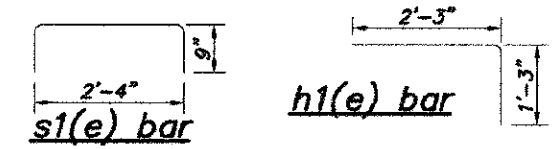
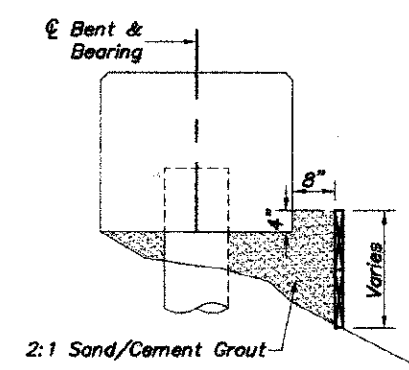


**SECTION THRU ABUTMENT AT EDGE OF DECK**  
(At Right Angles)



**SECTION THRU ABUTMENT TOP OF CAP ELEVATION ADJUSTMENT**  
(At Right Angles)

Filling of void beneath Bent 1 to be done under the direction of the Engineer using 2:1 sand/cement grout (truck mixed) and necessary formwork in accordance with Art. 109.04 of the Standard Specifications



**EXISTING PILE DATA (2 ABUTMENTS)**

TYPE ESTIMATED LENGTH  
 12" METAL SHELLS  
 BENT #1- 44 FEET  
 BENT #2- 44 FEET

**NOTES**

- The Backwall and the portion of the Wingwalls above the bonded construction joint shall be cast against the in-place beam.
- Reinforcement bars shall conform to the requirements of ASTM A706, Grade 60.
- Space reinforcement in cap to miss anchor bolts.

**PPC DECK BEAMS MODIFIED PILE BENT ABUTMENT**

STRUCTURE NO. 001-3235  
 DRAINAGE DITCH  
 ADAMS COUNTY  
 SEC. 11-00078-02-BR  
 STATION 345+78