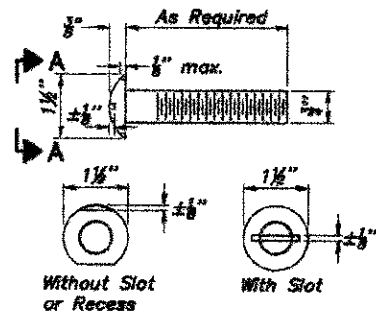
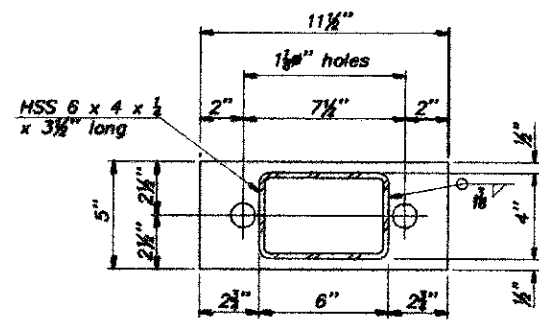


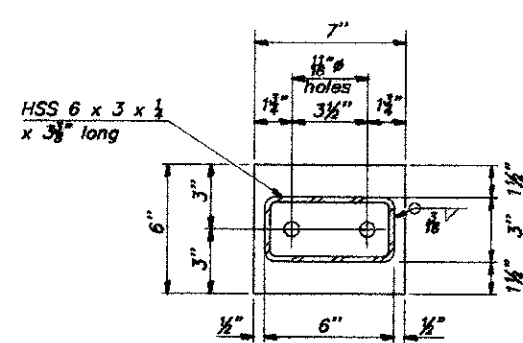
COUNTY	ROUTE	SECTION	SHT. NO.
ADAMS	FAS 1600	11-00078-02-BR	17
STEEL RAILING, TYPE S1			



**VIEW A-A**  
**ROUND HEAD BOLT**



$\varnothing$  1/2" x 11 1/2" x 5"



$\varnothing$  1/2" x 7" x 6"

\*\* Whenever the lower insert assemblies interfere with strand locations, the #3 bars shall be cut and adjusted in order to allow raising or lowering of the lower inserts. Maximum adjustment not to exceed 1/2".

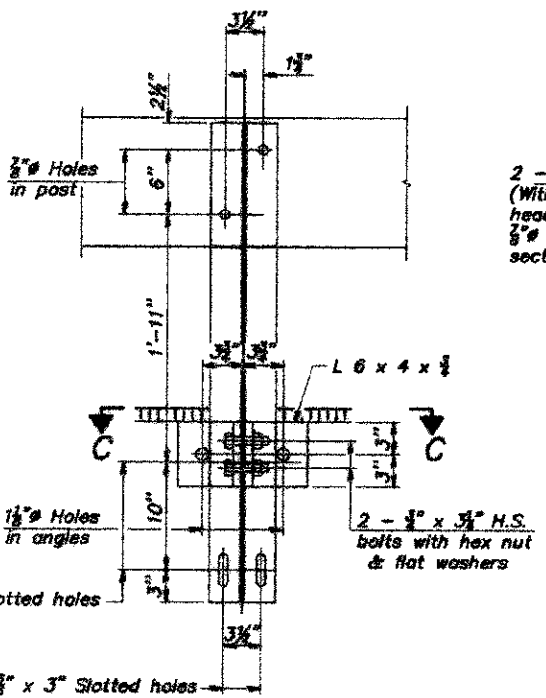
**Notes:**

All field drilled holes shall be coated with an approved zinc rich paint before erection.

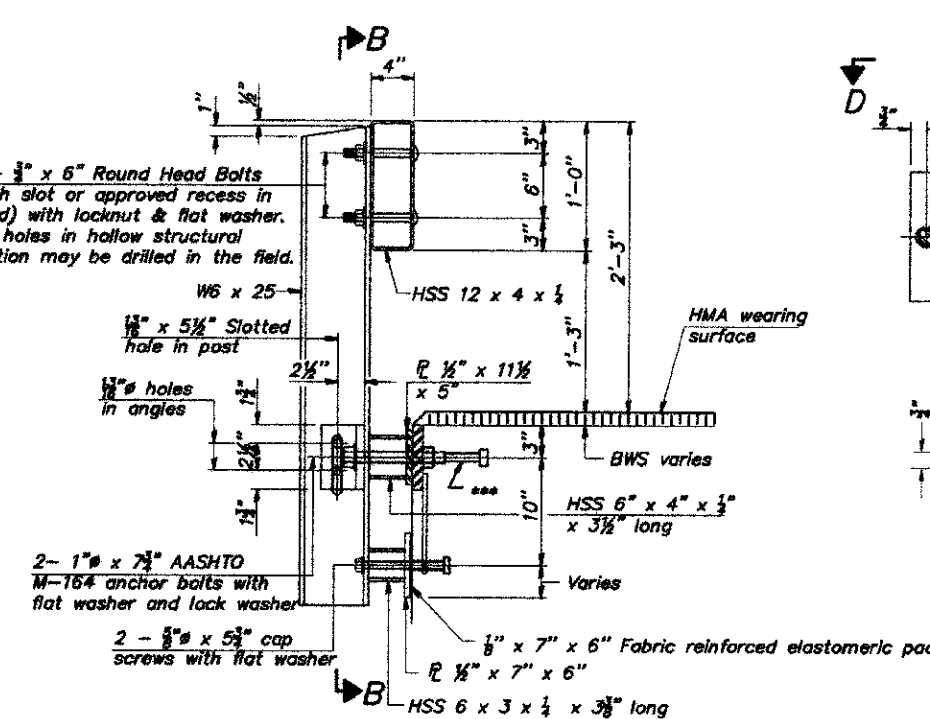
For multi-span bridges, sufficient 1/4" x 6" x 1'-2" galvanized steel shims shall be provided to align rail between adjacent spans. Cost included with Steel Railing, Type S-1.

All steel rail elements shall be galvanized according to Article 509.05 of the Standard Specifications.

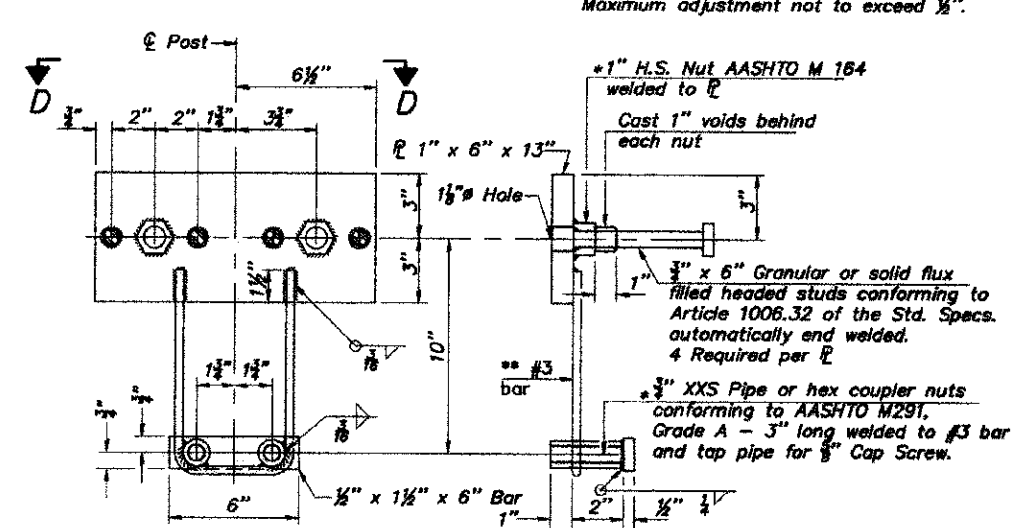
\*\*\* The studs of the anchor devices shall be placed below the top reinforcement bars and the outermost longitudinal reinforcement bar shall be placed directly above the studs of the rail post anchor device.



**SECTION B-B**

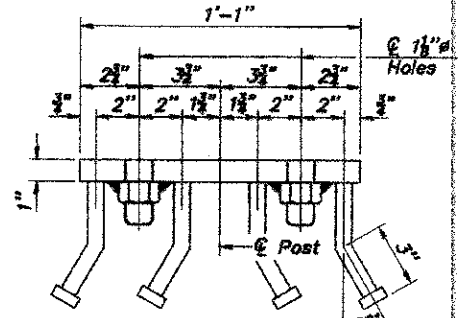


**SECTION AT RAILING POST**

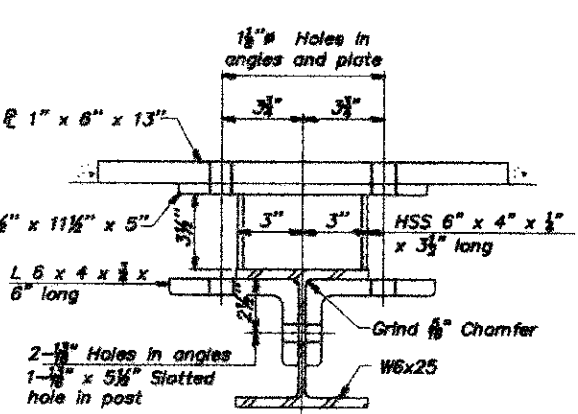


**ANCHOR DEVICE**

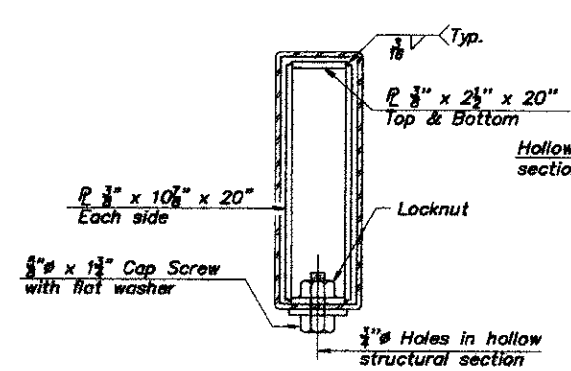
\* Threaded areas shall be plugged or blocked off during casting of beam.



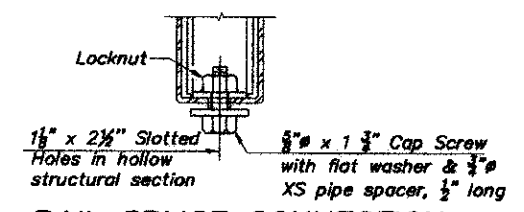
**VIEW D-D**



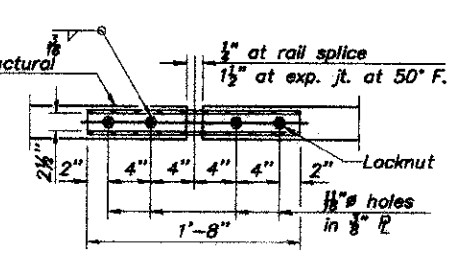
**SECTION C-C**



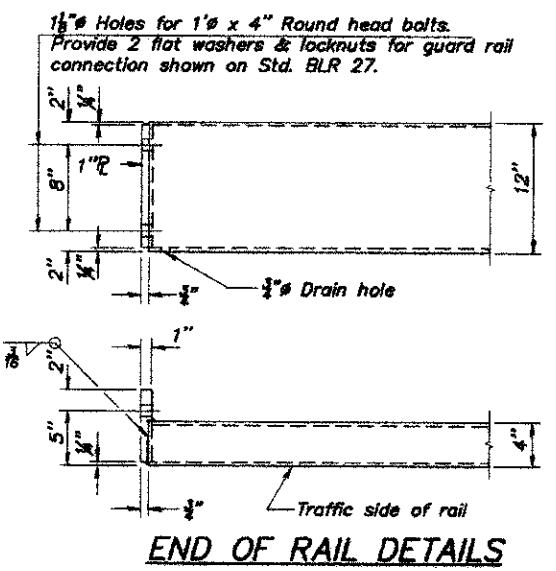
**SECTIONS AT RAIL SPLICE**



**RAIL SPLICE CONNECTION AT EXPANSION JT.**



**PLAN - BOTTOM SPLICE TYPICAL**



**END OF RAIL DETAILS**

**BILL OF MATERIAL**

Item	Unit	Quantity
Steel Railing, Type S1	Foot	100

**STEEL RAILING, TYPE S1**  
STRUCTURE NO. 001-3235  
DRAINAGE DITCH  
ADAMS COUNTY  
SEC. 11-00078-02-BR  
STATION 345+78