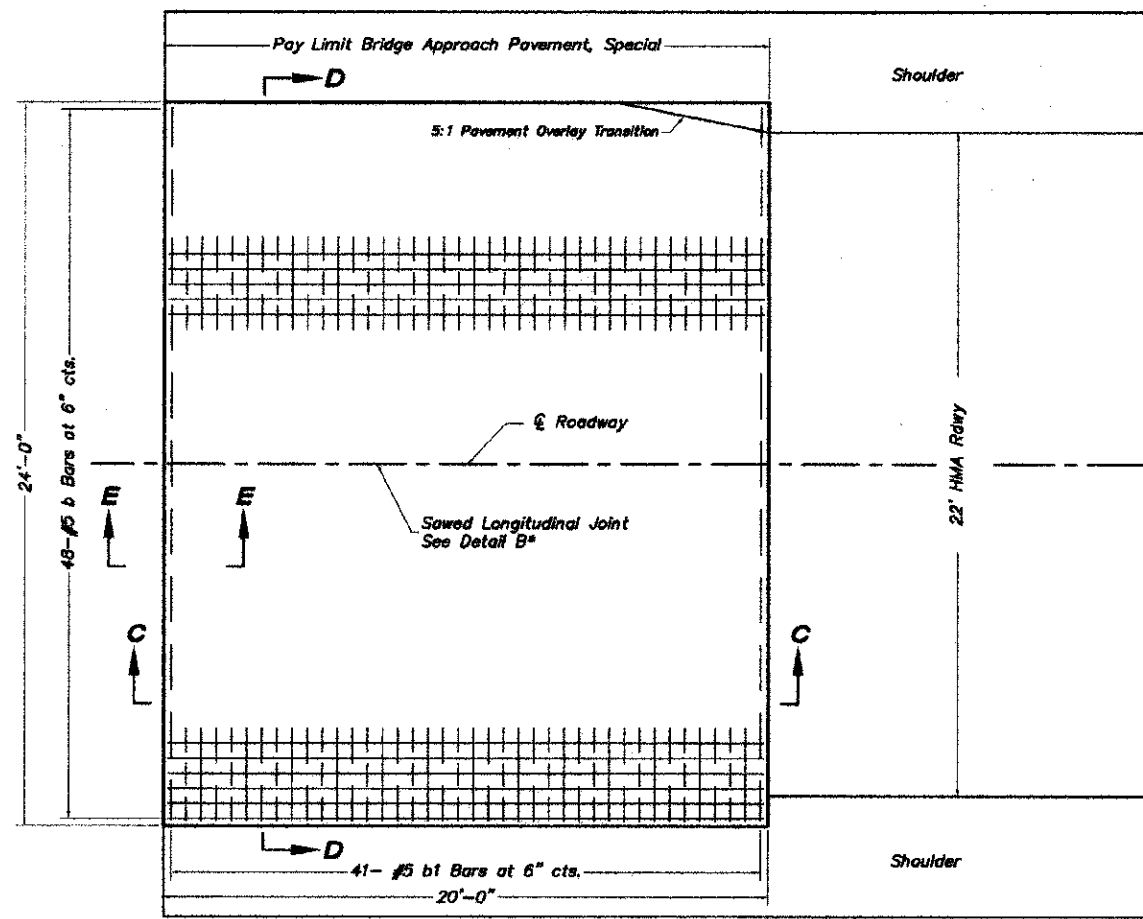
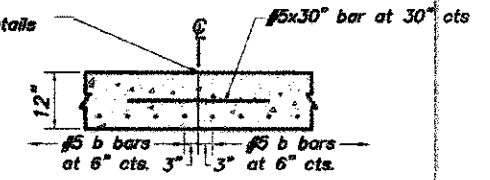


PROJECT NO. RS-1600(120)			
COUNTY	ROUTE	SECTION	SHT. NO.
ADAMS	FAS 1600	11-00078-02-BR	18
BRIDGE APPROACH PAVEMENT, SPECIAL			
BRIDGE SHEET 8 OF 8			93598



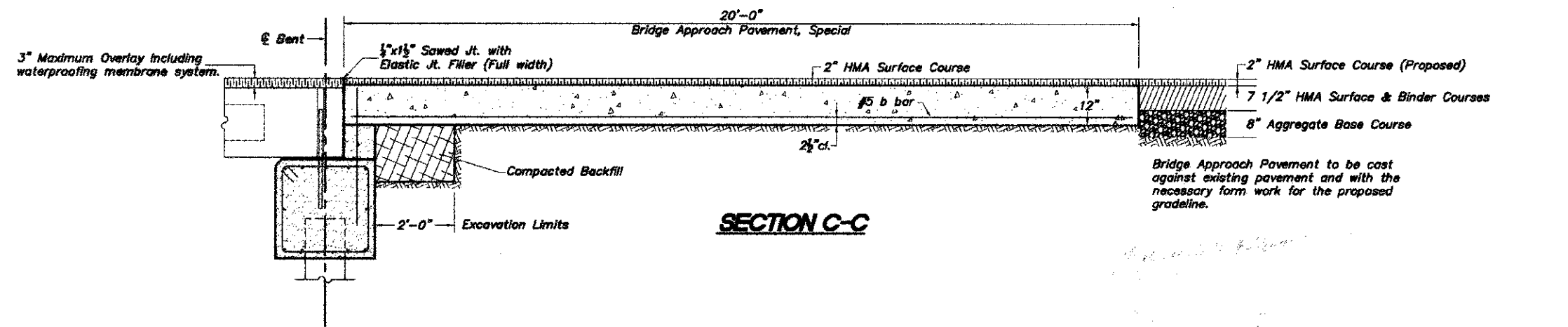
**PLAN - WITHOUT SKEW**

Longitudinal Construction Joint in accordance with details shown on Standard 420001

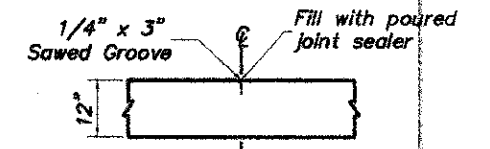


**CONSTRUCTION JOINT**

As approved by the Engineer, the Contractor may elect to reduce the widths of placement by use of the Optional Longitudinal Construction Joint shown. Joints shall be located at the edge of a traffic lane.



**SECTION C-C**



**DETAIL B**

**BILL OF MATERIAL FOR ONE APPROACH**

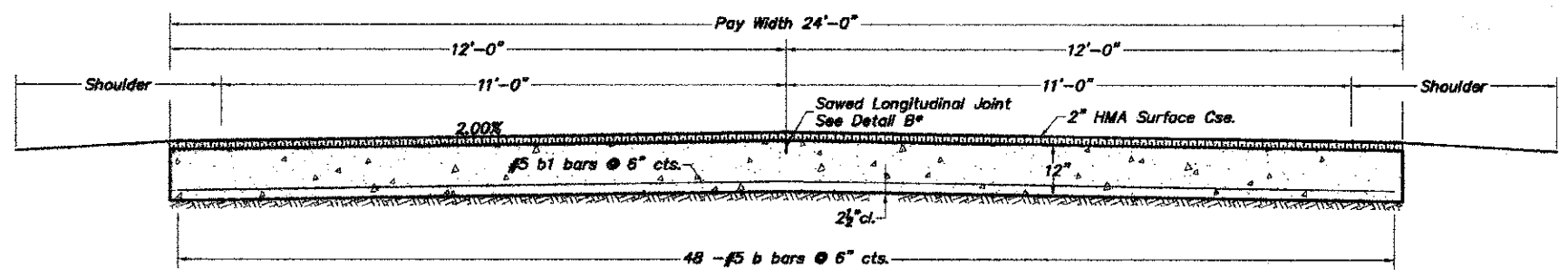
Bar	No.	Size	Length	Shape
b(e)	48	#5	19'-8"	—
b1(e)	41	#5	23'-8"	—
Reinforcement Bars			1,997 Lbs.*	
Class PV Concrete			17.8 Cu. Yd.*	

\* - INFORMATION ONLY

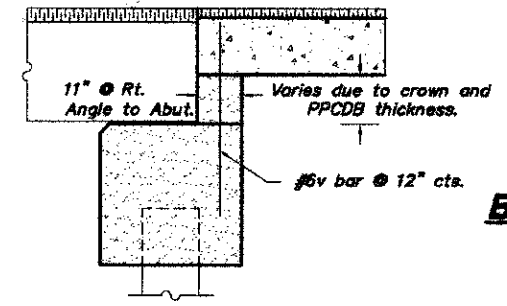
**DESIGN STRESSES**

$f_c = 3,500$  psi  
 $f_y = 60,000$  psi

**BRIDGE APPROACH PAVEMENT, SPECIAL 53.3 SQ. YD.**



**SECTION D-D**



**SECTION E-E  
(PILE BENT ABUTMENT CAP)**

**BRIDGE APPROACH PAVEMENT, SPECIAL**