

CNTY HWY	SECTION	COUNTY	TOTAL SHEETS	SHEET NO.
7	07-00142-00-BR	COLES	18	1
		ILLINOIS	CONTRACT NO. 95643	

INDEX OF SHEETS

- 1 COVER SHEET
- 2 GENERAL NOTES / DETAILS
- 3 QUANTITIES / EARTHWORK SCHEDULES
- 4-5 PLAN AND PROFILE
- 6 GENERAL PLAN & ELEVATION
- 7 SUPERSTRUCTURE
- 8 SUPERSTRUCTURE DETAILS
- 9 BRIDGE RAIL DETAILS
- 10 ABUTMENT DETAILS
- 11 PILE DETAILS
- 12 BORING LOGS
- 13-16 CH 7 CROSS SECTIONS
- 17-18 OSAGE CROSS SECTIONS

HIGHWAY STANDARDS

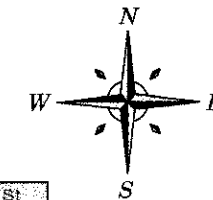
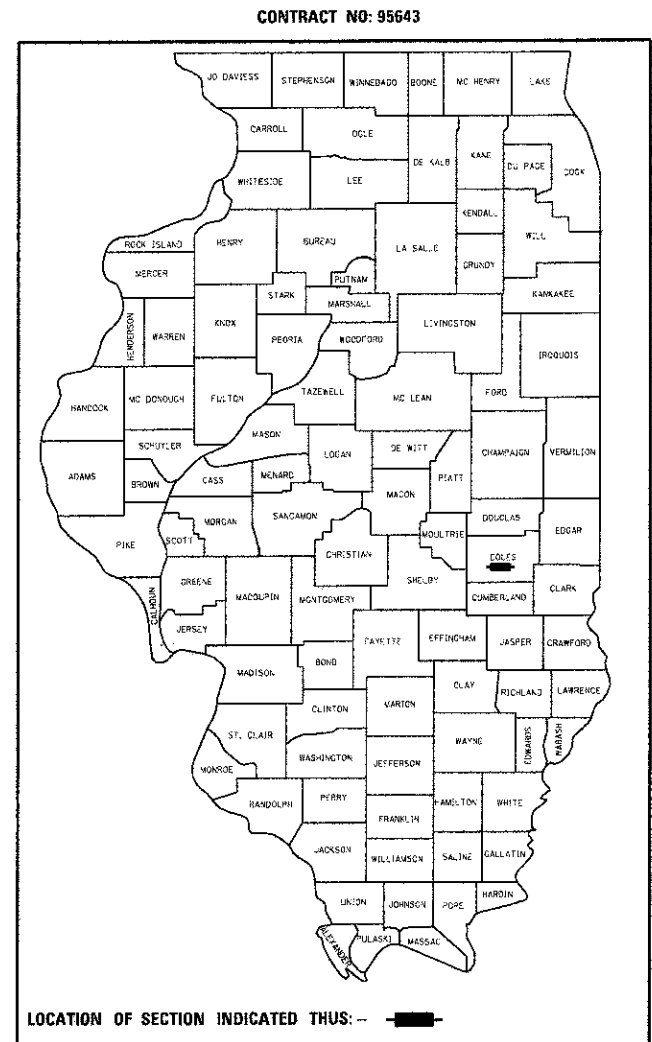
- 000001-06 STANDARD SYMBOLS
- 280001-07 TEMPORARY EROSION CONTROL SYSTEMS
- 515001-03 NAME PLATE FOR BRIDGES
- 701001-02 OFF-ROAD OPERATIONS LESS THAN 15'
- 701006-04 OFF-ROAD OPERATIONS GREATER THAN 15'
- 701901-02 TRAFFIC CONTROL DEVICES
- BLR 21-9 APPLICATION OF TRAFFIC CONTROL DEVICES

STATE OF ILLINOIS
DEPARTMENT OF TRANSPORTATION
DIVISION OF HIGHWAYS

PROPOSED HIGHWAY BRIDGE PROGRAM

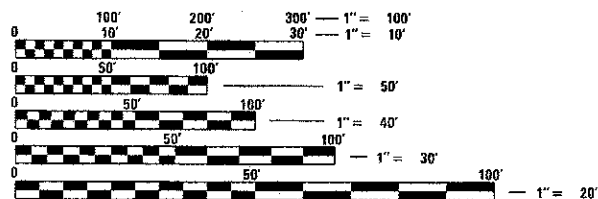
COUNTY HIGHWAY 7
SECTION 07-00142-00-BR
PROJECT BROS-0029(292)
COLES COUNTY

C-97-007-11



ENGINEERING PLAN SUBMITTAL	
THESE ENGINEERING PLANS AND SUPPORTING DOCUMENTS ARE ISSUED FOR THE FOLLOWING PURPOSE ONLY:	
PRELIMINARY PLAN REVIEW NO.	
PRE-FINAL PLAN REVIEW NO. 1	
FINAL PLAN REVIEW NO.	
PERMIT APPLICATION	
<input checked="" type="checkbox"/> BIDDING	
CONSTRUCTION	

DATE: 02-18-2013



FULL SIZE PLANS HAVE BEEN PREPARED USING STANDARD ENGINEERING SCALES. REDUCED SIZED PLANS WILL NOT CONFORM TO STANDARD SCALES. IN MAKING MEASUREMENTS ON REDUCED PLANS, THE ABOVE SCALES MAY BE USED.

J.U.L.I.E.
JOINT UTILITY LOCATION INFORMATION FOR EXCAVATION
1-800-892-0123
OR 811

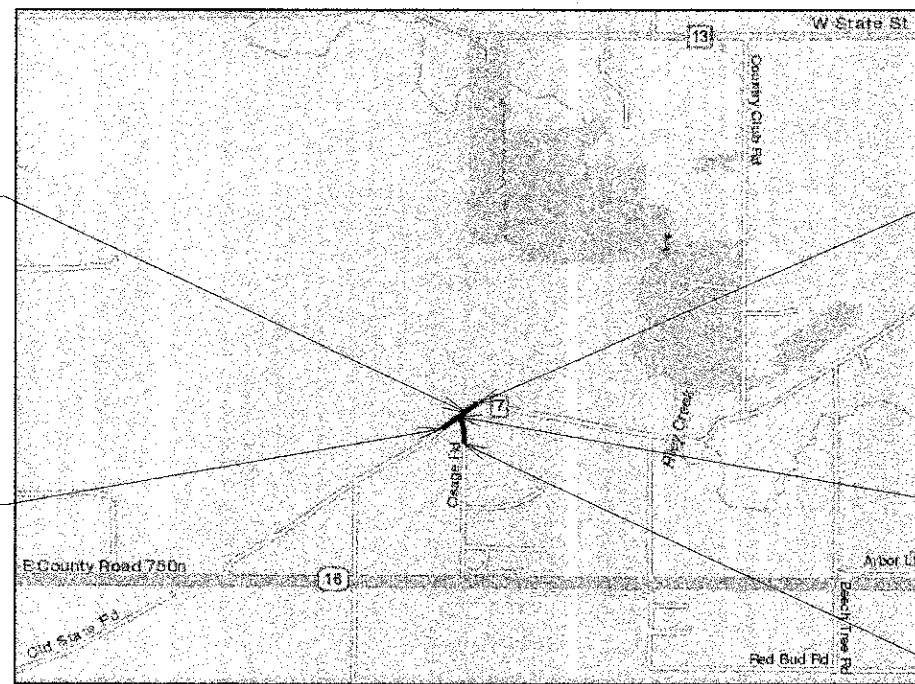
PROPOSED STRUCTURE REPLACEMENT OVER UNION DRAINAGE DITCH 3 DISTRICT 7 STATION 13 + 11.21 NEW SN: 015-3425 OLD SN: 015-3022

PROJECT BEGINS STA 9 + 75.00

PROJECT ENDS STA 15 + 25.00

PROJECT ENDS STA 54 + 37.75

PROJECT BEGINS STA 51 + 00.00



LOCATION MAP



GROSS LENGTH = 887.75 FT = 0.168 MILE
CH7 ADT = 700 AND OSAGE RD ADT = 900
FUNCTIONAL CLASSIFICATION = LOCAL ROAD
DESIGN SPEED = 50



ESI CONSULTANTS, LTD
753 WINDSOR ROAD
CHARLESTON, IL 61820
(217) 346-1500
WWW.ESICONSULTANTS.LTD.COM
ILLINOIS DEPARTMENT OF PROFESSIONAL REGULATION REGISTRATION #184-003685
** THIS DOCUMENT IS THE PROPERTY OF ESI CONSULTANTS, LTD. AND NO PART HEREIN SHALL BE USED ** EXCEPT FOR THIS SPECIFIC PROJECT WITHOUT THE WRITTEN CONSENT OF ESI CONSULTANTS, LTD.

APPROVED	<u>02/20</u>	<u>20 13</u>
	<i>Daniel Feuerborn</i> COUNTY ENGINEER	
APPROVED		<u>20</u>
	ROAD COMMISSIONER	
PASSED	<u>2/25/2013</u>	
	<i>Margaret Koop</i> DISTRICT SEVEN ENGINEER OF LOCAL ROADS & STREETS	
Releasing For Bid Based on Limited Review	<u>2/25/2013</u>	
	<i>Daniel Feuerborn</i> DEPUTY DIRECTOR OF HIGHWAYS, REGION FOUR ENGINEER STATE OF ILLINOIS DEPARTMENT OF TRANSPORTATION	



Daniel Feuerborn 2/19/2013
Date
License Expires 11-30-2013

PROJECT ENGINEER: ADAM GROVES / JOE HICKOX
PROJECT MANAGER: DANIEL FEUERBORN

CONTRACT NO. 95643