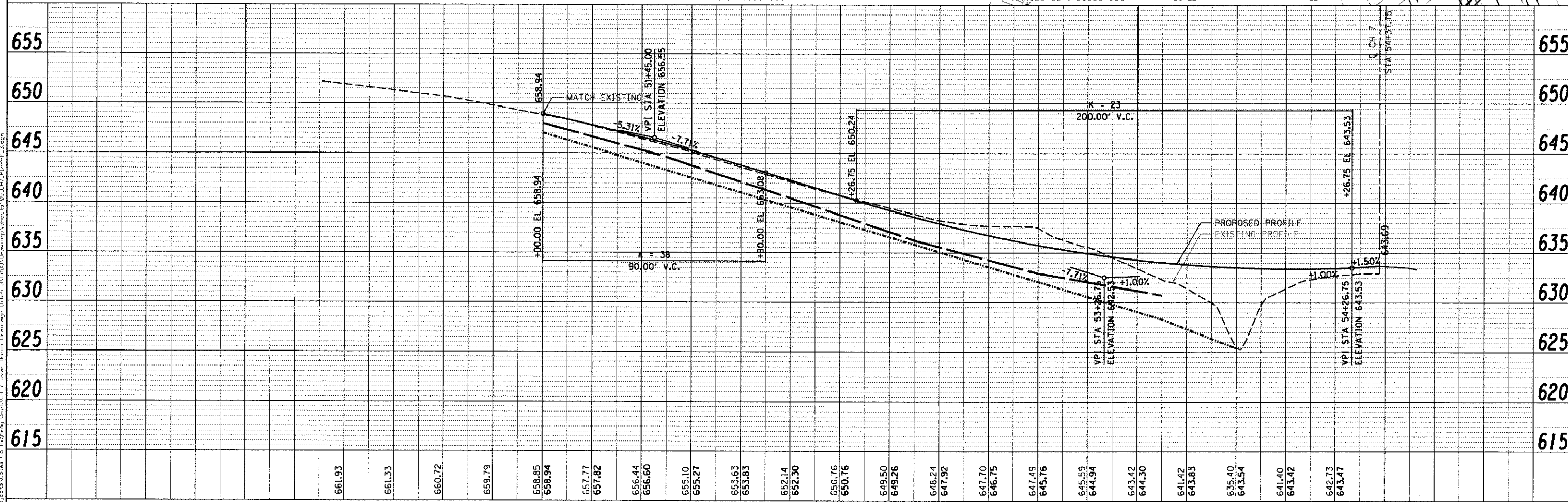
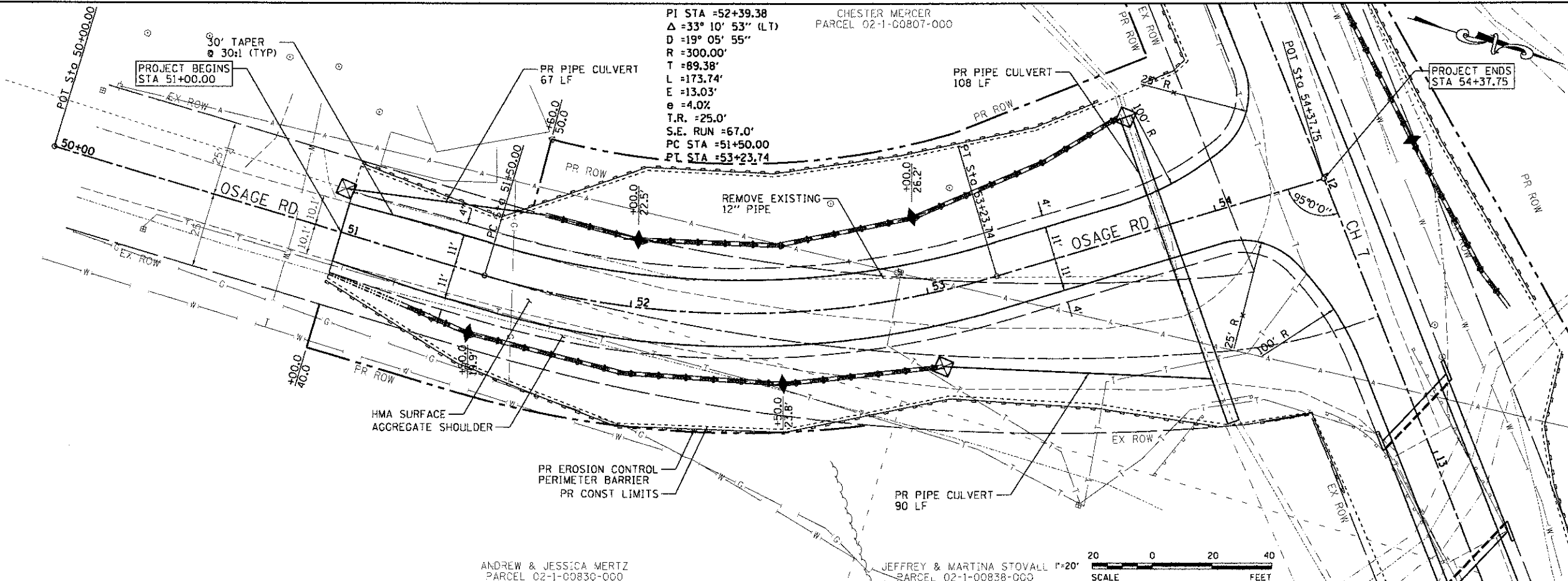


PLAN	SURVEYED	DATE
	PLOTTED	
	BY	
	NOTE BOOK	
	NO. OF SHEETS	
	NO.	

PROFILE	SURVEYED	DATE
	PLOTTED	
	BY	
	NOTE BOOK	
	NO. OF SHEETS	
	NO.	

PRINTED DATE: 2/16/2013  
 FILE NAME: N:\Projects\Calcasieu Co Highway Dept\CH 7 over Union Drainage\Drawings\Sheet\05.CH7.P.P.F.3.dgn

PI STA = 52+39.38  
 $\Delta = 33^\circ 10' 53''$  (LT)  
 $D = 19^\circ 05' 55''$   
 $R = 300.00'$   
 $T = 89.38'$   
 $L = 173.74'$   
 $E = 13.03'$   
 $e = 4.02'$   
 $T.R. = 25.0'$   
 $S.E. RUN = 67.0'$   
 $PC STA = 51+50.00$   
 $PT STA = 53+23.74$



USER NAME = \$USER\$	DESIGNED - ADG/JEH	REVISED -
PLLOT SCALE = 20.0000' / IN.	DRAWN - ADG/JEH	REVISED -
PLLOT DATE = 2/16/2013	CHECKED - DF	REVISED -
	DATE - 02-18-1013	REVISED -

STATE OF ILLINOIS  
 DEPARTMENT OF TRANSPORTATION

OSAGE RD  
 SCALE: 20:1 SHEET NO 2 OF 2 SHEETS STA 51+00.00 TO STA 54+26.75

CNTY HWY	SECTION	COUNTY	TOTAL SHEETS	SHEET NO.
7	07-00142-00-BR	COLES	18	5
CONTRACT NO. 95643			ILLINOIS FED. AID PROJECT	