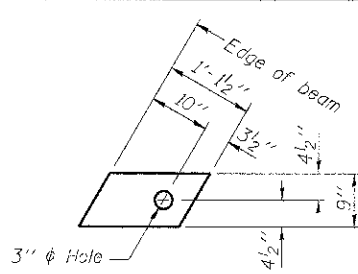


FABRIC BEARING PAD
(Interior)

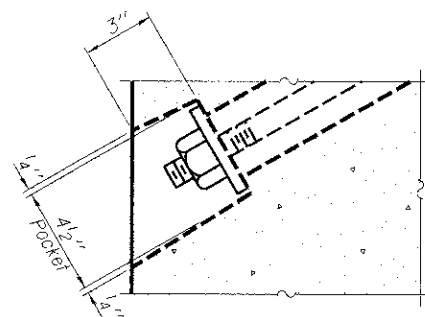


FABRIC BEARING PAD
(Exterior)

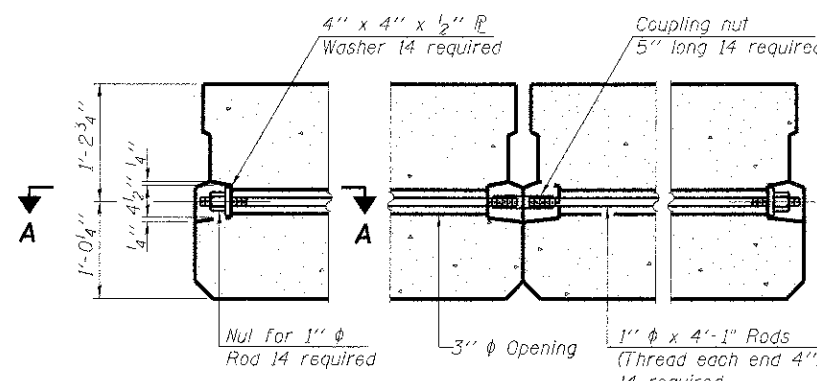
FIXED

Notes:

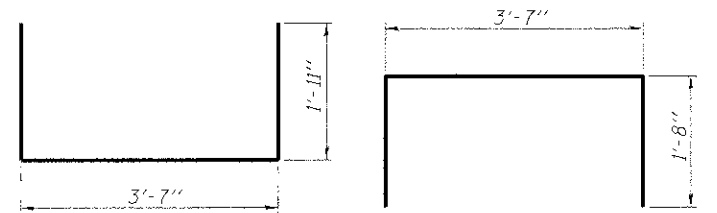
All bearing pads shall be 1" thick.
Omit holes when using expansion bearings.
Expansion bearing pad shall be bonded to the substructure.



SECTION A-A

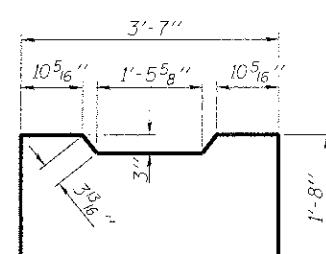


TYPICAL TRANSVERSE TIE ASSEMBLY

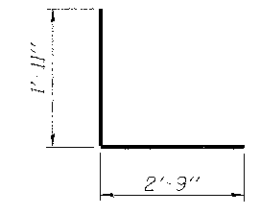


BAR S1(E)

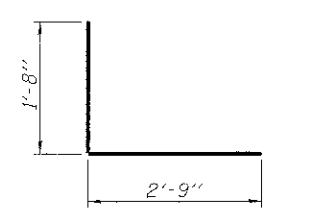
BAR S1(E)



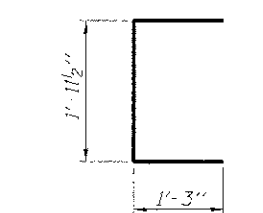
BAR S2(E)



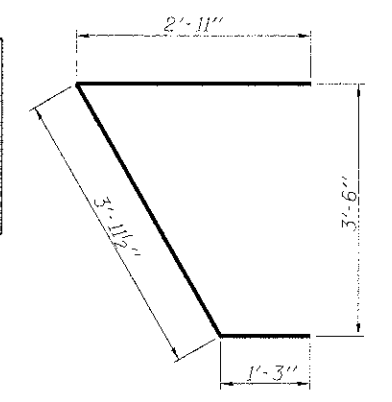
BAR S3(E)



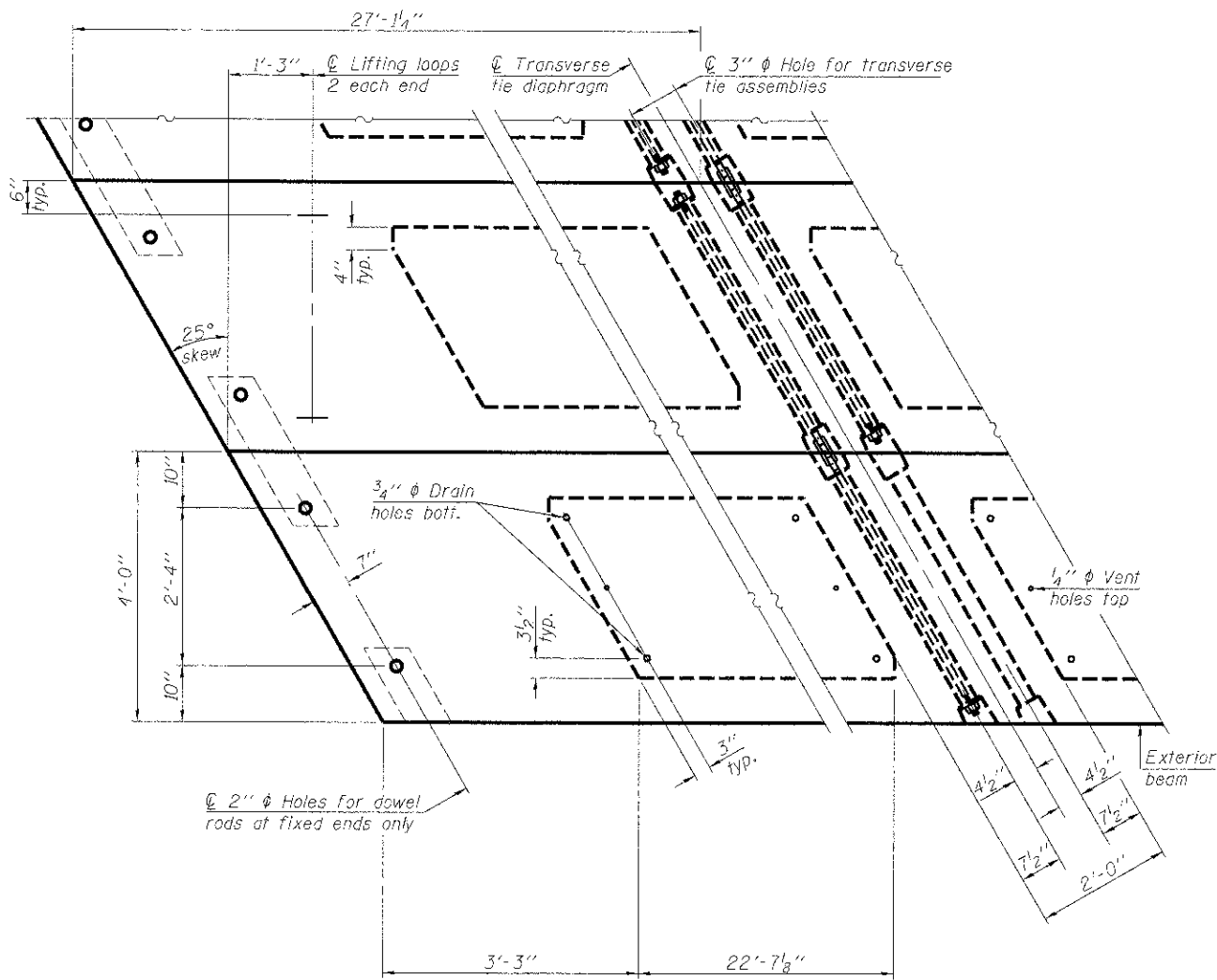
BAR S4(E)



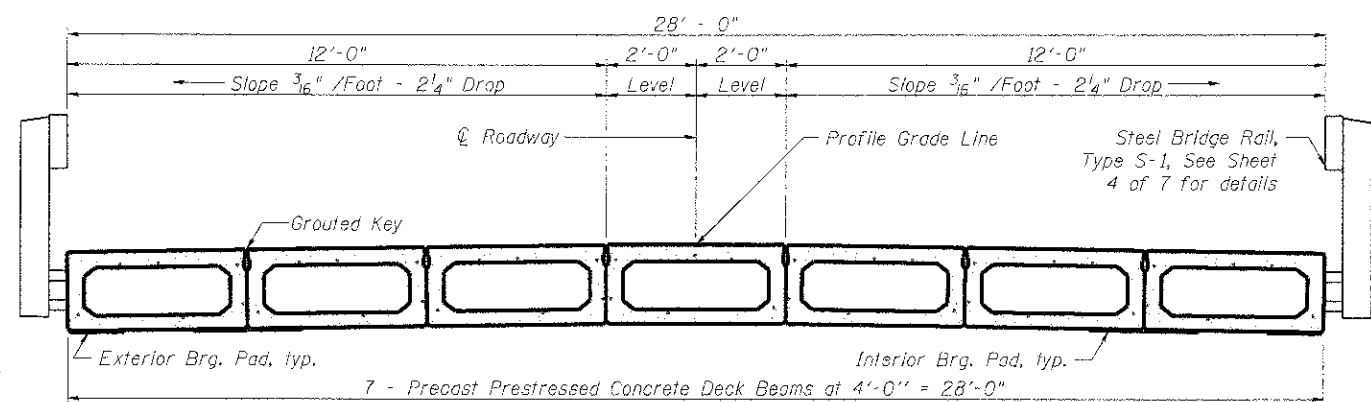
BAR U1(E)



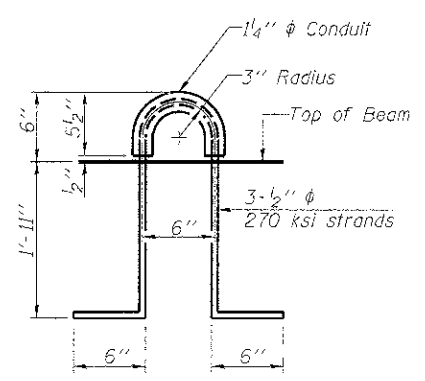
BAR U1(E)



PLAN VIEW



CROSS SECTION



LIFTING LOOP DETAIL

NOTES

Prestressing steel shall be uncoated high strength, low relaxation 7-wire strand, Grade 270. The nominal diameter shall be 1/2" and the nominal cross-sectional area shall be 0.153 sq. in. The 1" rods in the transverse tie assembly shall be tightened to a snug fit and the threads set. Pockets on exterior faces of bridge shall be filled with grout after transverse tie assembly is in place. Reinforcement bars shall conform to ASTM A 706, Grade 60. (See Special Provisions). Two 1/8" fabric adjusting shims of the dimensions of the exterior bearing pad shall be provided for each bearing pad location. A minimum 2 1/2" lifting pin shall be used to engage the lifting loops during handling. Corrosion Inhibitor, per Article 1020.05(b)(12) and 1021.06 of the Standard Specifications, shall be used in the concrete for precast prestressed concrete deck beams. Compressive strength of prestressed concrete, *f'_c*, shall be 6000 psi. Compressive strength of prestressed concrete at release, *f'_{ci}*, shall be 5000 psi.

BILL OF MATERIAL

Precast Prestressed Conc. Deck Bms. (27" depth) Sq. Ft. 1520

27" X 48" PPC DECK BEAM DETAILS

SUPERSTRUCTURE DETAILS
STRUCTURE NO. 015-3425

DATE: 02-18-2013 DRAWN BY: ADG/JEH CHECKED BY: DF

SHEET NO. 3 OF 7 SHEETS	CNTY HWY	SECTION	COUNTY	TOTAL SHEETS	SHEET NO.
	7	07-00142-00-BR	COLES	18	8
			CONTRACT NO. 95643		
FED. ROAD DIST. NO. ILLINOIS FED. AID PROJECT					

ESI CONSULTANTS, LTD
732 WINDSOR ROAD
CHARLESTON, IL 61820
(717) 346-1500
WWW.ESI-CONSULTANTS.COM
ILLINOIS DEPARTMENT OF PROFESSIONAL REGULATION REGISTRATION #184-003985

PD-2748-RD 11-1-09

PRINTED DATE: 2/18/2013 FILE NAME: \\snp\projects\015-3425\Drawings\Sheets\08_CIV_Super-Deck.dwg