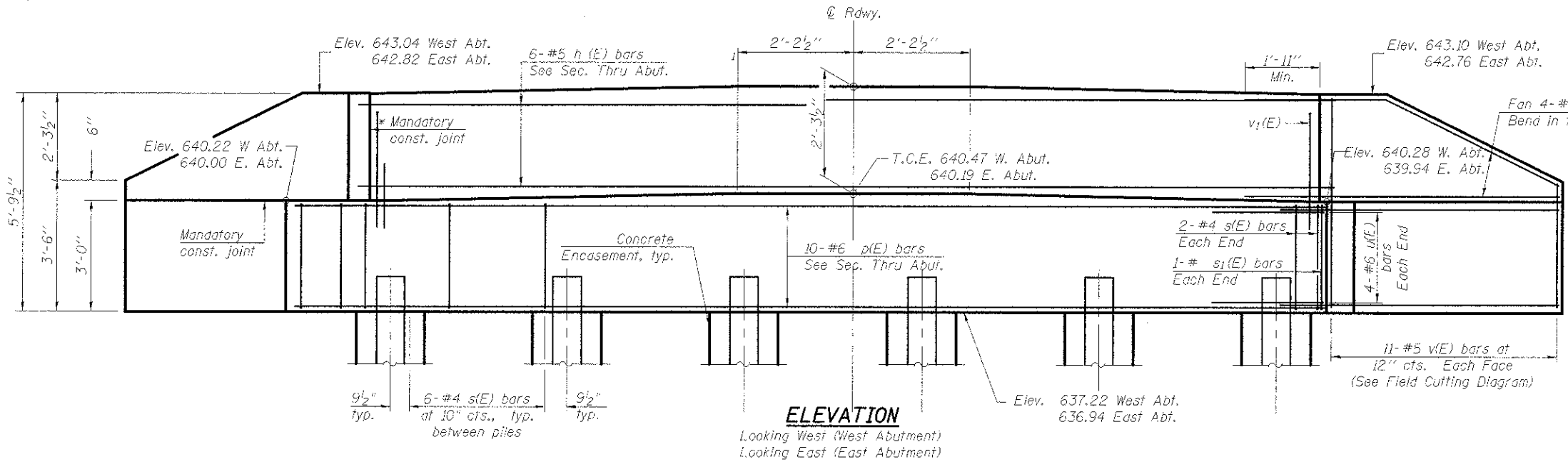
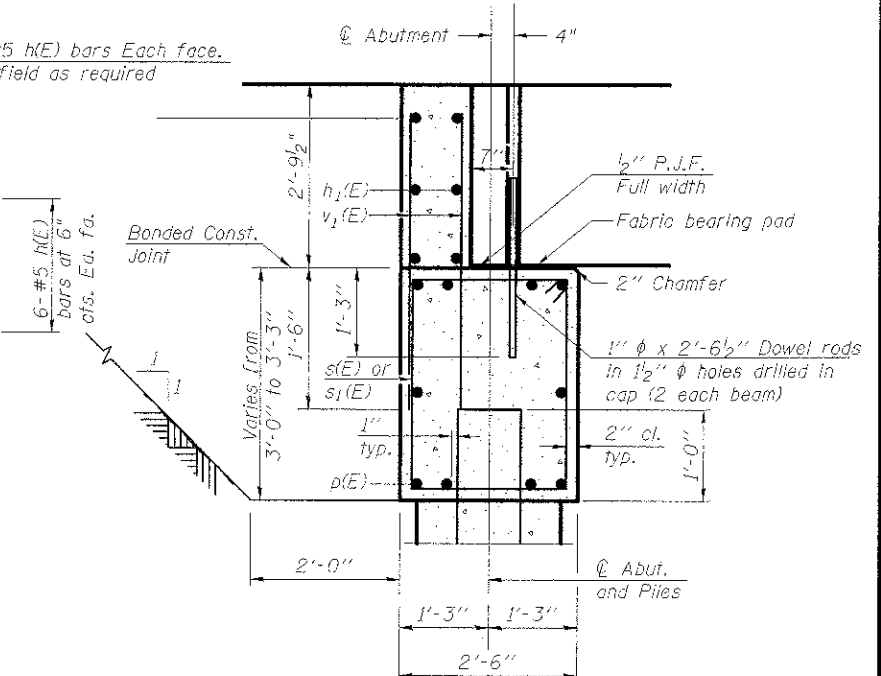


* Cast top of wingwall flush with exterior beam face after beams have been erected.



ELEVATION
Looking West (West Abutment)
Looking East (East Abutment)

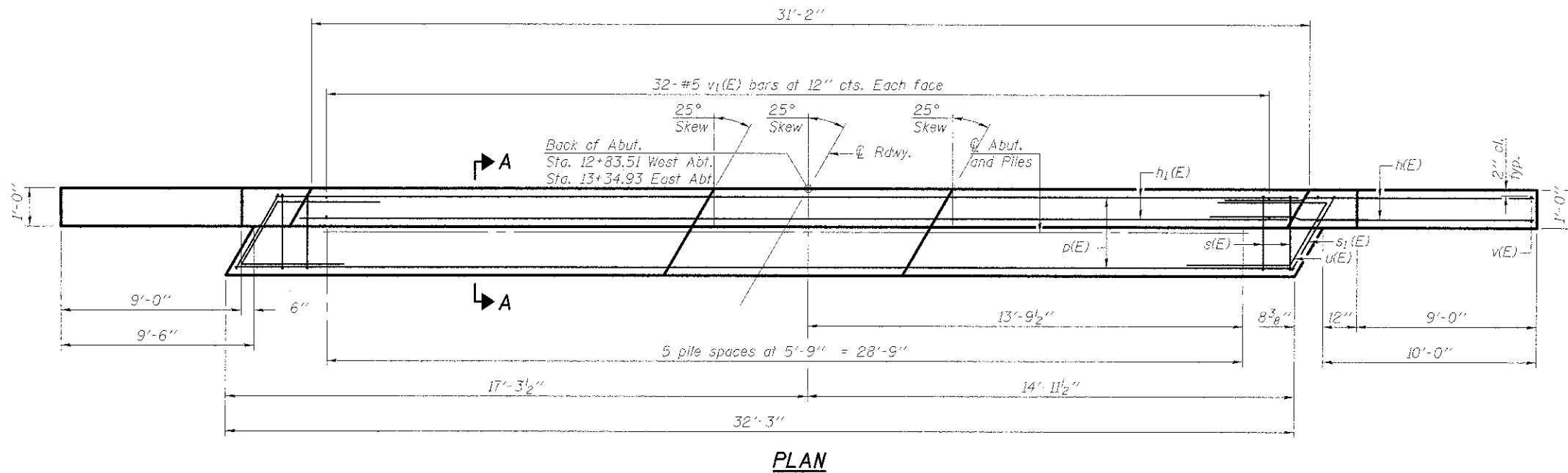


SECTION A-A
(Dimensions are at Rt. L's)

BILL OF MATERIAL
Two Abutments

Bar	No.	Size	Length	Shape
h(E)	48	#5	12'-3"	—
h1(E)	12	#5	30'-10"	—
p(E)	20	#6	31'-11"	—
s(E)	68	#4	10'-5"	□
s1(E)	4	#4	10'-9"	□
u(E)	16	#6	11'-4"	∟
v(E)	44	#5	8'-7"	—
v1(E)	128	#5	4'-7"	—
Structure Excavation			Cu. Yd.	132.4
Concrete Structures			Cu. Yd.	32.2
Reinforcement Bars, Epoxy Coated			Pound	3740
Furnishing Steel Piles HP 12x53			Foot	505
Driving Piles			Foot	505
Test Pile, Steel HP 12x53			Each	2
Concrete Encasement			Cu. Yd.	4.2

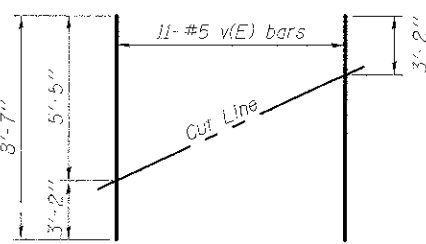
Notes:
For details of piles and Concrete Encasement, see sheet 6 of 7.
Cast backwall after beams and concrete wearing surface, if applicable, have been erected.



PLAN

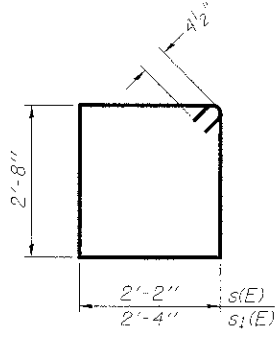
PILE DATA

Type: Steel HP 12x53
Nominal Required Bearing: 355K
Factored Resistance Available: 177K
Est. Length: 53' East Abt., 48' West Abt.
No. Production Piles: 10
No. Test Piles: 2

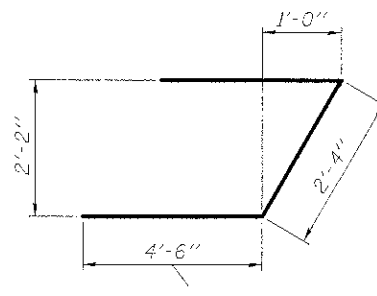


FIELD CUTTING DIAGRAM

Order v(E) full length. Cut as shown and use remainder of bars in opposite face.



BARS s(E) & s1(E)



BAR u(E)

ABUTMENT DETAILS
STRUCTURE NO. 015-3425

DATE: 08-19-2013 DRAWN BY: ABE/JEM CHECKED BY: DF

SHEET NO. 5 OF 7 SHEETS	CNTY HWY	SECTION	COUNTY	TOTAL SHEETS	SHEET NO.
	7	07-00142-00-BR	COLES	18	10
CONTRACT NO. 95643					
FED. ROAD DIST. NO. ILLINOIS FED. AID PROJECT					

ESI CONSULTANTS, LTD.
13 WINDSOR ROAD
CHARLESTON, IL 61920
(317) 248-1800
www.esiconsultants.com
ILLINOIS DEPARTMENT OF PROFESSIONAL REGULATION REGISTRATION #164-003889

PRINTED DATE: 2/27/2013 FILE NAME: I:\Projects\Coles Co Highway\Drawings\Sheet\15-015-3425-ABUT.dwg