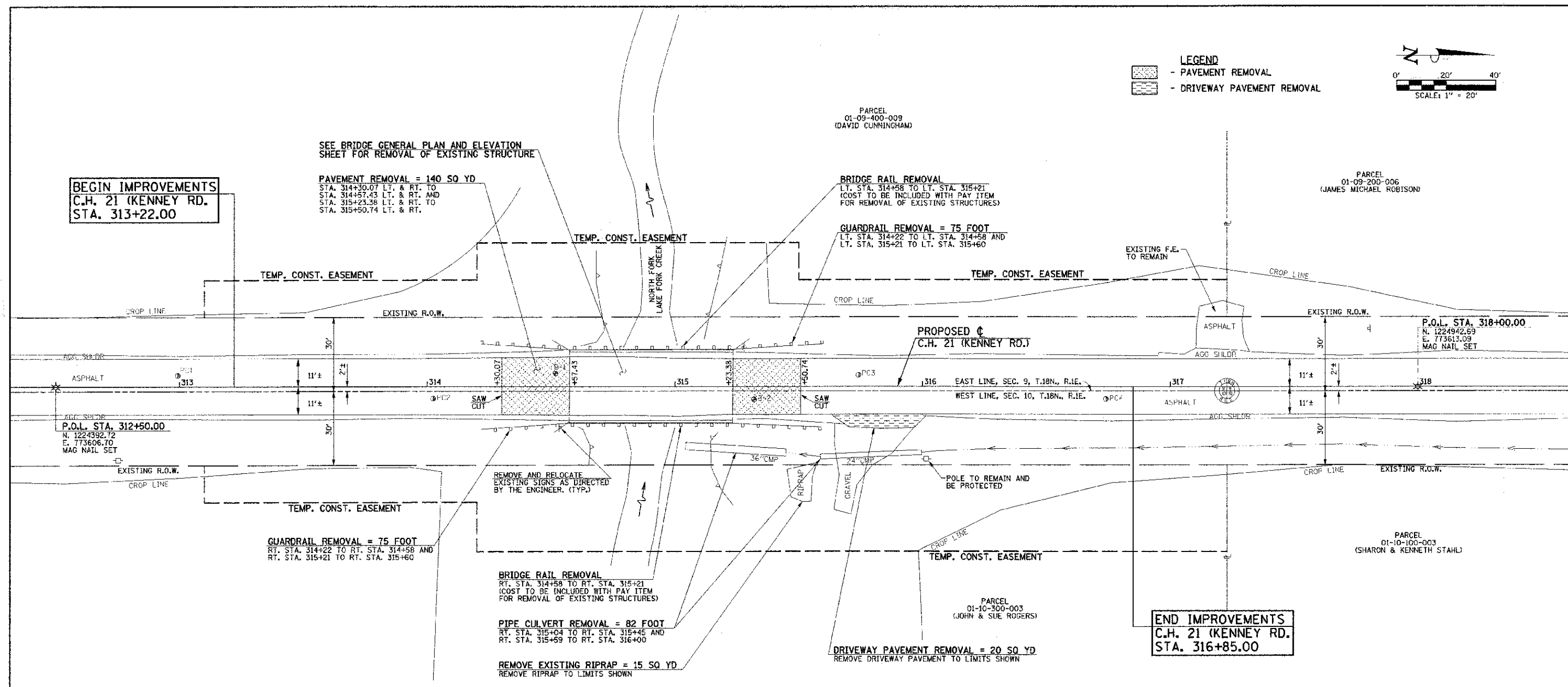
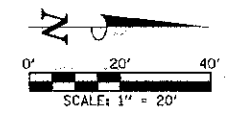


LEGEND
 [Pattern] - PAVEMENT REMOVAL
 [Pattern] - DRIVEWAY PAVEMENT REMOVAL



FOR PROPOSED CONSTRUCTION IN THIS AREA SEE PLAN AND PROFILE SHEET.

EXISTING PAVEMENTS IN WHICH THE TOP SURFACE IS TO BE JOINED TO THE PROPOSED WORK SHALL BE SO JOINED THROUGH SAW CUT JUNCTURES.

THE REMOVAL AND RELOCATION OF VARIOUS TRAFFIC SIGNS NOTED HEREON SHALL BE AS DIRECTED BY THE ENGINEER AND AS SPECIFIED IN THE STANDARD SPECIFICATIONS. THIS WORK SHALL NOT BE PAID FOR SEPARATELY AND IS CONSIDERED INCLUDED IN THE VARIOUS REMOVAL ITEMS.

FILE NAME = p:\m9320040_macon county - ch 21 bridge replacement\plans\sheet\removals.dgn PLOT DATE = 12/21/2012 10:49:34 AM	DESIGNED - R.L.H. DRAWN - J.L.B. CHECKED - S.M.W. DATE - NOV. 2012	REVISED - REVISED - REVISED - REVISED -	STATE OF ILLINOIS DEPARTMENT OF TRANSPORTATION	REMOVALS/RELOCATIONS PLAN	F.A.S. RTE. SECTION COUNTY TOTAL SHEETS SHEET NO. 546 10-00237-00-ER MACON 25 7
					SCALE: 1"=20' SHEET NO. 7 OF 25 SHEETS STA. 312+50.00 TO STA. 318+00.00