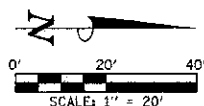


SEC. 9, T.18N., R.1E., 3rd P.M.  
MACON COUNTY, IL

PARCEL  
01-09-400-003  
(DAVID CUNNINGHAM)

PARCEL  
01-09-200-006  
(JAMES MICHAEL ROBISON)



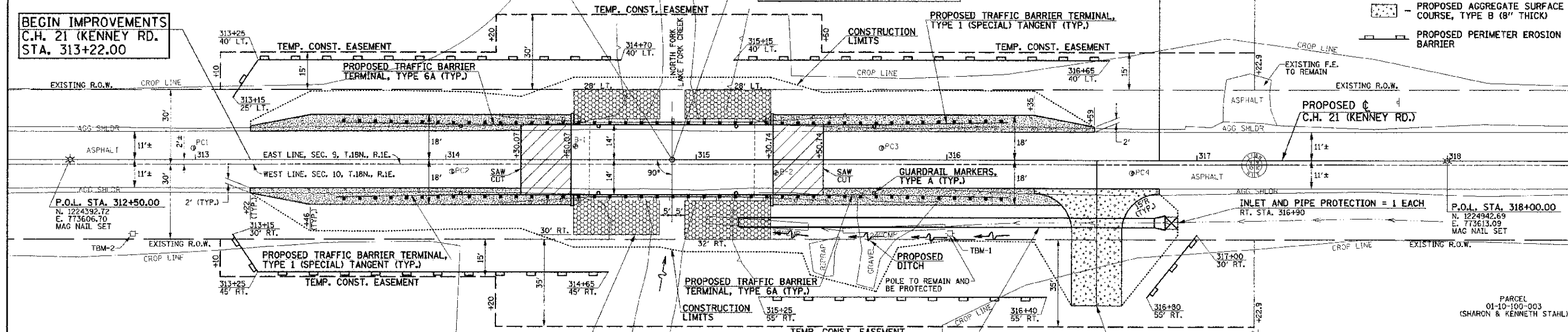
EXISTING BRIDGE  
SN 058-3004, @ STA. 314+90.40  
THREE SIMPLE SPAN CONCRETE  
DECK ON STEEL STRINGERS WITH  
TIMBER SUBSTRUCTURE  
SKEW = 0°  
WIDTH = 29'-11" OUT TO OUT OF DECK  
LENGTH = 66'-0" BACK TO BACK OF ABUTMENTS

PROPOSED BRIDGE REPLACEMENT  
SN 058-3396, @ STA. 314+90.40  
THREE SPAN CONTINUOUS R.C.  
SLAB BRIDGE  
SKEW = 0°  
WIDTH = 28'-0" OUT TO OUT OF DECK AND  
FACE TO FACE OF BRIDGE RAILS  
LENGTH = 81'-8" BACK TO BACK OF ABUTMENTS

END IMPROVEMENTS  
C.H. 21 (KENNEY RD.)  
STA. 316+85.00

- LEGEND**
- PROPOSED BRIDGE APPROACH PAVEMENT (SPECIAL) (15" THICK)
  - PROPOSED AGGREGATE SHOULDERS, TYPE A (6" THICK)
  - PROPOSED AGGREGATE SURFACE COURSE, TYPE B (8" THICK)
  - PROPOSED PERIMETER EROSION BARRIER

BEGIN IMPROVEMENTS  
C.H. 21 (KENNEY RD.)  
STA. 313+22.00



PERIMETER EROSION BARRIER = 618 FOOT  
TOTAL QUANTITY FOR ALL 5 LOCATIONS

TRAFFIC BARRIER TERMINAL, TYPE 1 (SPECIAL) TANGENT = 4 EACH

TERMINAL MARKER - DIRECT APPLIED = 4 EACH  
STA. 313+66.27 LT. & RT. TO STA. 314+06.27 LT. & RT.  
STA. 315+74.53 LT. & RT. TO STA. 316+24.53 LT. & RT.

TRAFFIC BARRIER TERMINAL, TYPE 6A = 4 EACH

STA. 314+06.27 LT. & RT. TO STA. 314+52.85 LT. & RT.  
STA. 315+27.95 LT. & RT. TO STA. 315+74.53 LT. & RT.

GUARDRAIL MARKERS, TYPE A = 8 EACH

STA. 314+06 LT. & RT.  
STA. 314+61 LT. & RT.  
STA. 315+16 LT. & RT.  
STA. 315+71 LT. & RT.

STONE RIPRAP CL A4 = 496 SQ YD  
FILTER FABRIC = 690 SQ YD  
STA. 314+81.1 TO STA. 314+85.4 AND  
STA. 314+95.4 TO STA. 315+29.7  
SEE BRIDGE PLANS FOR DETAILS.

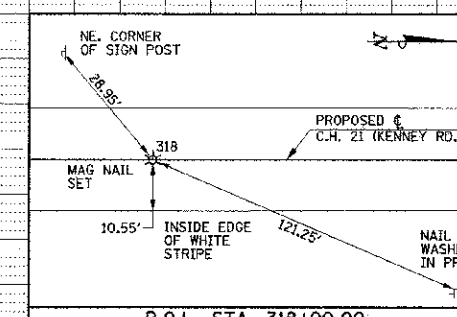
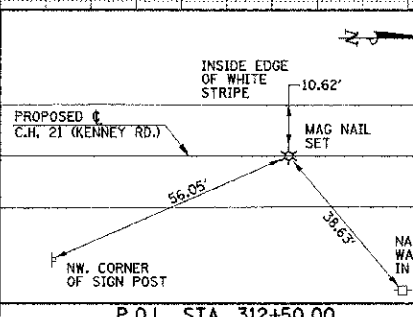
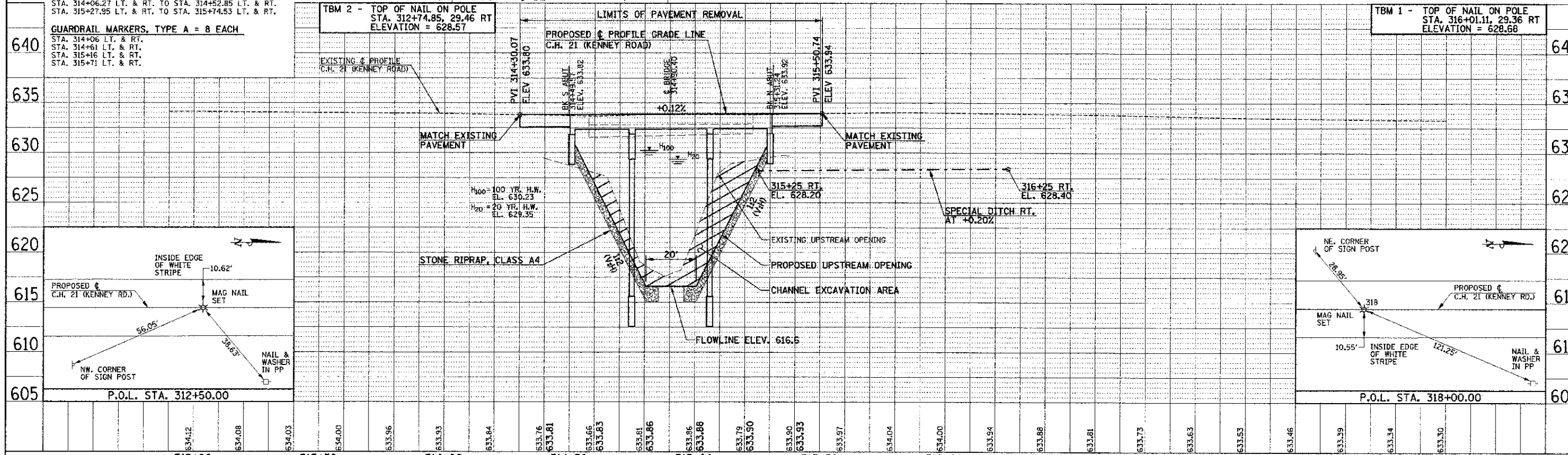
P CUL CL C 1 EQRS 36 = 166 FOOT  
MET END SEC EQV RS 36 = 1 EACH  
TRENCH BACKFILL (SPECIAL) = 9 CU YD  
U.S.F.L. ELEV. = 627.30 (END SEC) - STA. 316+87.4, 25.0' RT.  
U.S.F.L. ELEV. = 625.60 (PIPE) - STA. 315+17.0, 25.0' RT.  
SEE DETAIL SHEET

CONSTRUCT NEW ENTRANCE  
316+60.0, 58.3' RT.  
20.0' F.E. (AGG) @ -6.0% & -13.0%  
CONSTRUCT ENTRANCE WITH AGGREGATE  
TO 18.0' RT. AT -6.0% AND TO 58.3' RT.  
AT -13.0%. SEE DETAIL SHEET AND  
CROSS SECTIONS.

SEE REMOVAL/RELOCATION PLANS  
FOR ADDITIONAL INFORMATION.

SEE PAVEMENT JOINTS AND PAVEMENT MARKING  
PLANS FOR ADDITIONAL INFORMATION.

SEC. 10, T.18N., R.1E., 3rd P.M.  
MACON COUNTY, IL



FILE NAME = p:\m\020040_macon county - ch 21 bridge replacement\plans\sheet\pp-ch21.dgn	DESIGNED - R.L.H.	REVISED -	STATE OF ILLINOIS DEPARTMENT OF TRANSPORTATION	PLAN AND PROFILE - C.H. 21 (KENNEY ROAD)	F.A.S. NO. 546	SECTION 10-00237-00-BR	COUNTY MACON	TOTAL SHEETS 25	SHEET NO. 8
PLOT DATE = 12/21/2012 10:49:35 AM	DRAWN - J.L.B.	REVISIONS -	SCALE = 1"=20'	SHEET NO. 8 OF 25 SHEETS	STA. 312+50.00 TO STA. 318+00.00	FED. ROAD DIST. NO.	ILLINOIS FED. AID PROJECT	CONTRACT NO. 95694	