

**GENERAL NOTES**

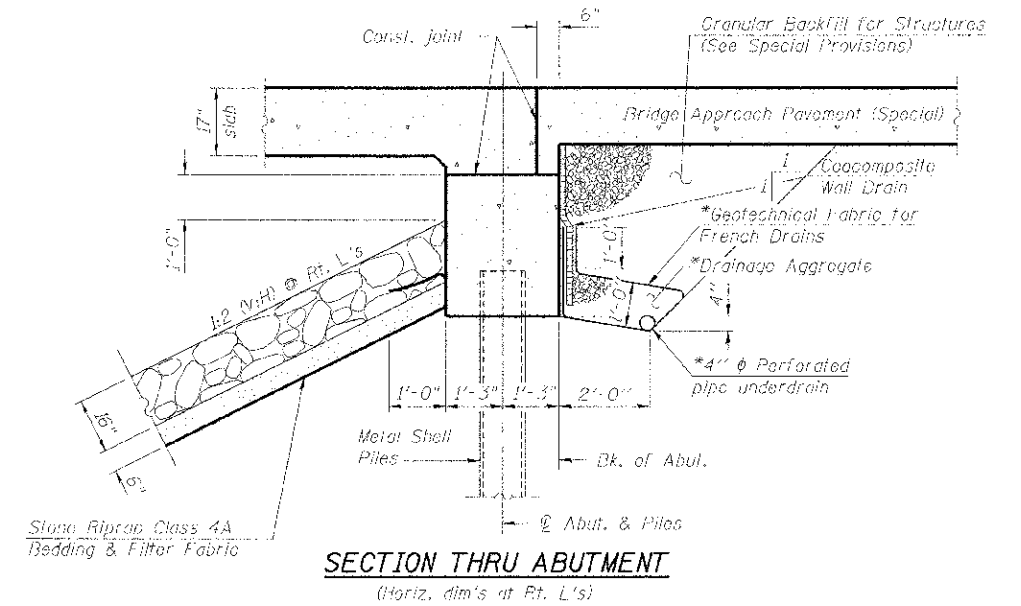
Reinforcement bars designated (E) shall be epoxy coated.

Layout of the slope protection system may be varied to suit ground conditions in the field as directed by the Engineer.

The embankment configuration shown shall be the minimum that must be placed and compacted prior to construction of the abutments.

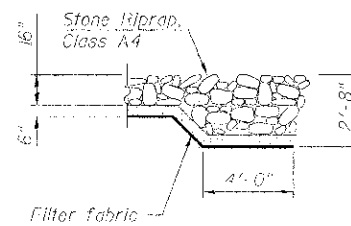
The Contractor shall make allowance for the deflection of forms, shrinkage and settlement of falsework, in addition to allowance for dead load deflection. Forms for deck slab shall be removed prior to placement of bridge approach slab.

Protective Coat shall also be applied to deck fascias, exposed portions of wingwalls, ends of pier and abutment caps, and the bridge approach slabs.

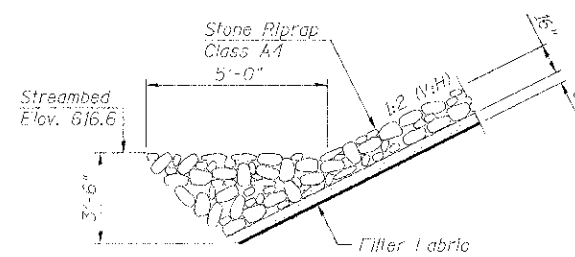


\*Included in the cost of Pipe Underdrains for Structures. (See Special Provisions)

All drainage system components shall extend to 2'-0" from the end of each wingwall except an outlet pipe shall extend until intersecting with the side slopes. The pipes shall drain into concrete headwalls. (See Article 601.05 of the Standard Specifications and Highway Standard 60110.)



**SECTION B-B**



**SECTION A-A**

	DESIGNED - SMM	REVISED -	<b>MACON COUNTY HIGHWAY DEPARTMENT</b>	<b>GENERAL NOTES</b> <b>STRUCTURE NO. 058-3396</b>		S.A.S. RTE. 546	SECTION 10-00237-00-BR	COUNTY MACON	TOTAL SHEETS 25	SHEET NO. 13
	CHECKED - RDC	REVISED -								CONTRACT NO. 95694
	DRAWN - SMM	REVISED -								
	CHECKED - RLH	REVISED -								
SHEET NO. 2 OF 9 SHEETS										