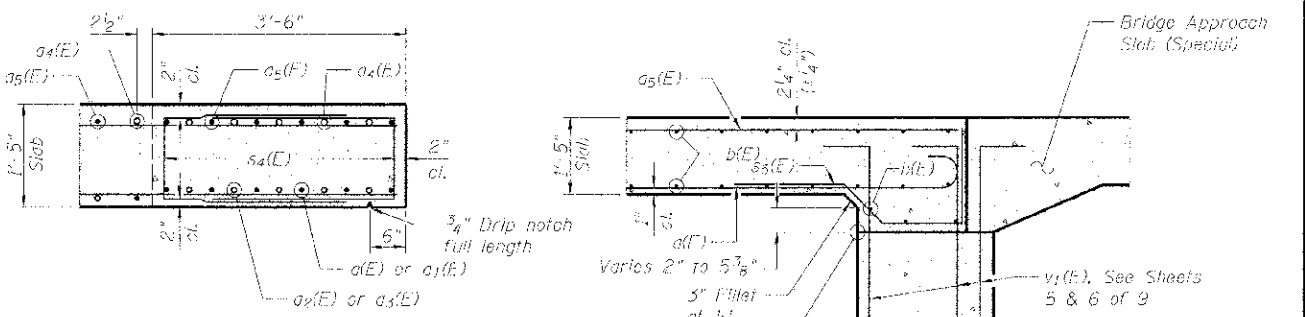


TOP OF SLAB REINFORCEMENT

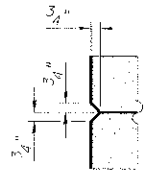
BOTTOM OF SLAB REINFORCEMENT

SLAB PLAN
(Half of Slab)

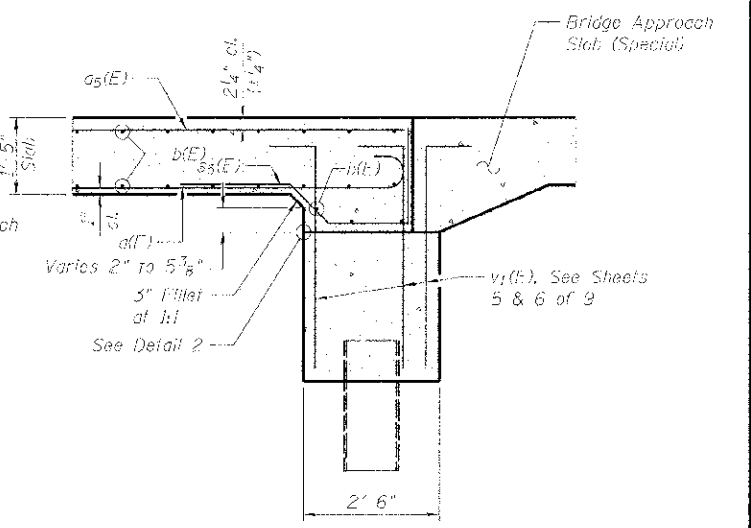
MIN. LAP
#4 2'-4"
#7 4'-2"



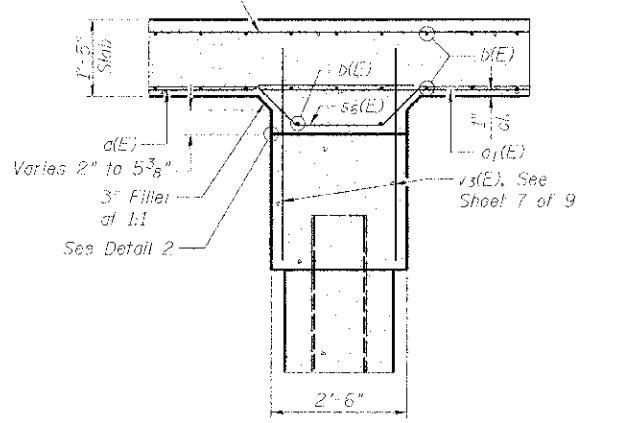
DETAIL 1



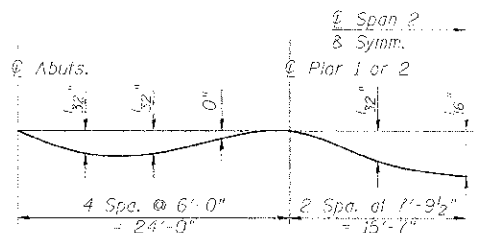
DETAIL 2



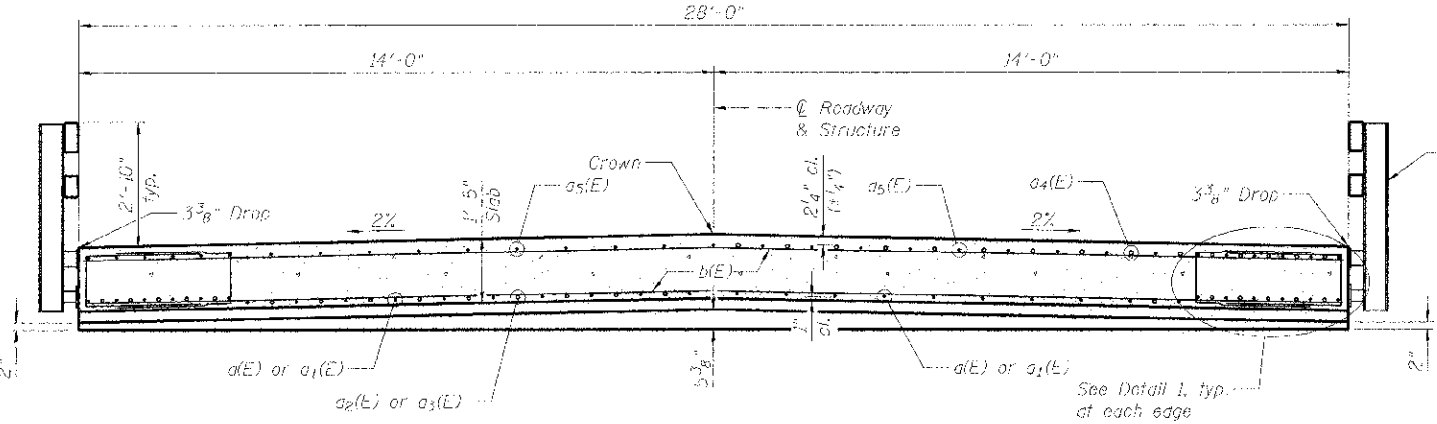
SECTION A-A



SECTION B-B



DEAD LOAD DEFLECTION DIAGRAM

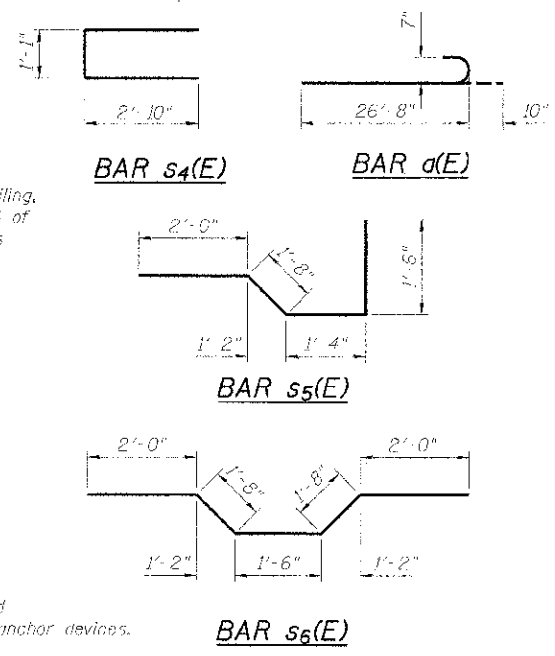


HALF SECTION NEAR MIDSPANS & ABUTS.

HALF SECTION NEAR PIERS

CROSS SECTION
(Looking North)

**Studs for rail post anchor devices shall be placed below the top bars, and the outermost longitudinal bars shall be placed directly above the studs of the rail post anchor devices.



SUPERSTRUCTURE BILL OF MATERIAL

Bar	No.	Size	Length	Shape	
a1(E)	64	#7	27'-6"	—	
a2(E)	32	#7	35'-4"	—	
a3(E)	58	#7	16'-11"	—	
a4(E)	29	#7	21'-10"	—	
a5(E)	50	#8	17'-0"	—	
a5(F)	52	#7	42'-4"	—	
b(E)	204	#4	27'-8"	—	
s4(E)	368	#4	6'-9"	—	
s5(E)	52	#6	6'-6"	—	
s6(E)	52	#6	8'-17"	—	
Concrete Superstructure				Cu. Yd.	123.9
Reinforcement Bars, Epoxy Coated				Found	24,020
Protective Coat				Sq. Yd.	439
Bridge Deck Grooving				Sq. Yd.	345