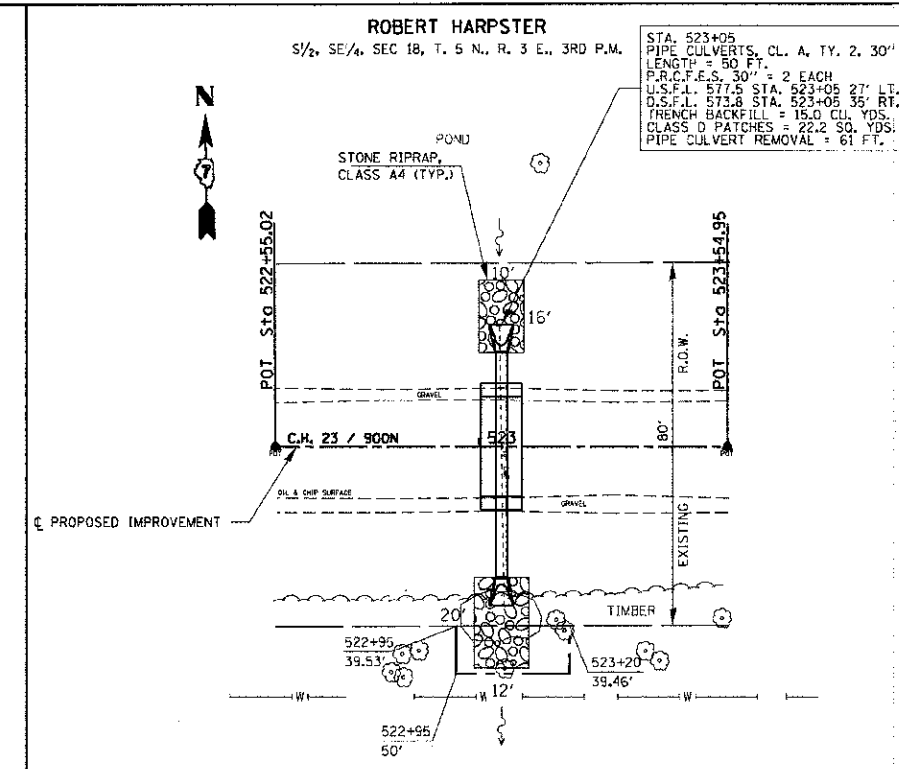
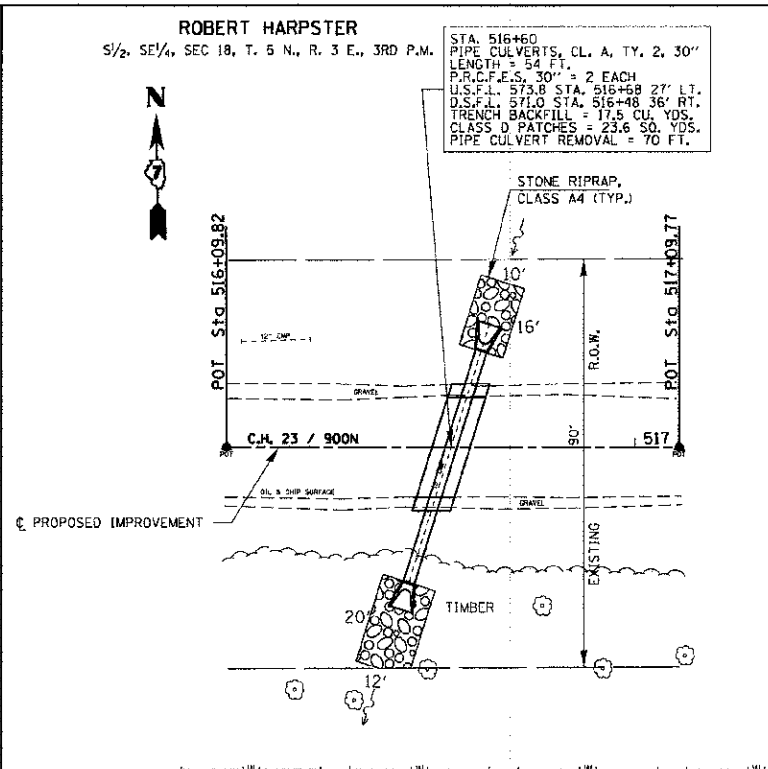
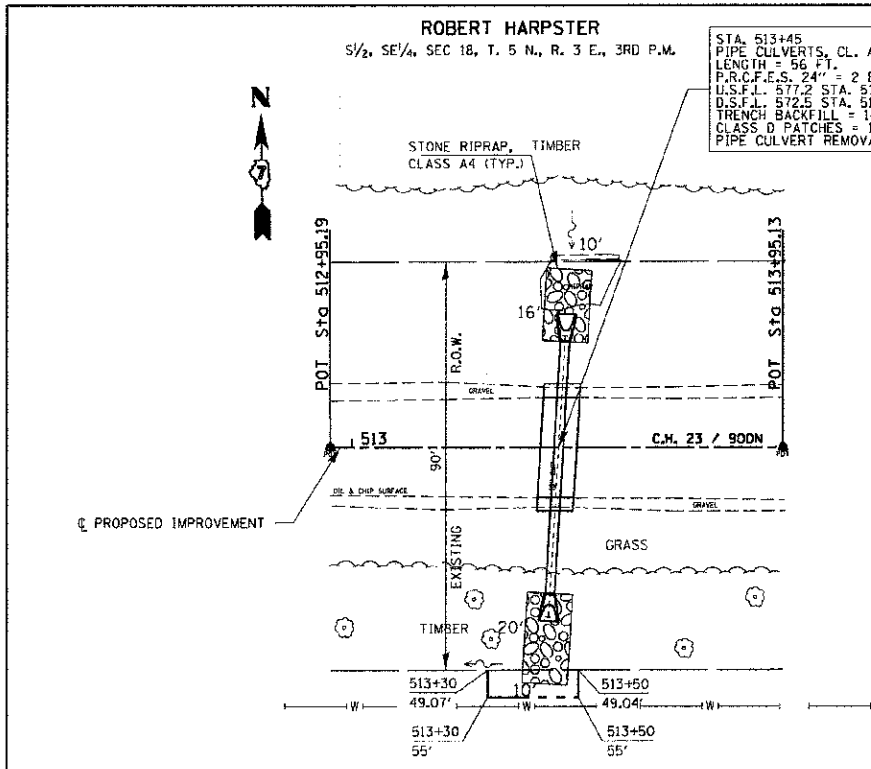


DATE	
BY	
REVIEWED	
PLotted	
NOTED	
NO.	



DATE	
BY	
REVIEWED	
PLotted	
NOTED	
NO.	

MERLE WILLIAMS NW 1/4, NE 1/4, SEC 19, T. 5 N., R. 3 E., 3RD P.M.		MERLE WILLIAMS NW 1/4, NE 1/4, SEC 19, T. 5 N., R. 3 E., 3RD P.M.		EARL & HAZEL MAGNUS NE 1/4, NE 1/4, SEC 19, T. 5 N., R. 3 E., 3RD P.M.	
586		586	584	584	588
584		584	582	582	586
582		582	580	580	584
580	EXISTING C GRADE	580	578	578	582
578		578	576	576	580
576		576	574	574	578
574		574	572	572	576
572		572	570	570	574
570		570	568	568	572
	581.76		581.25		581.67
	513+00		513+50		523+00
			518.83		582.07
			518.55		517+00
					523+50