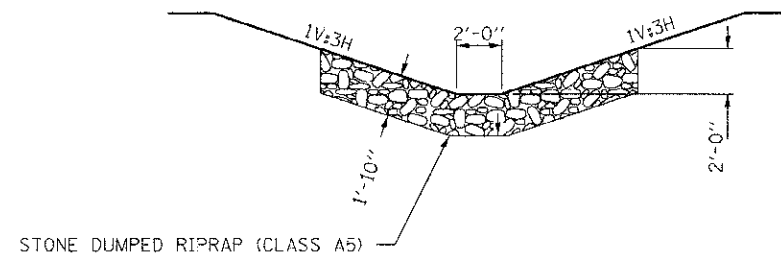
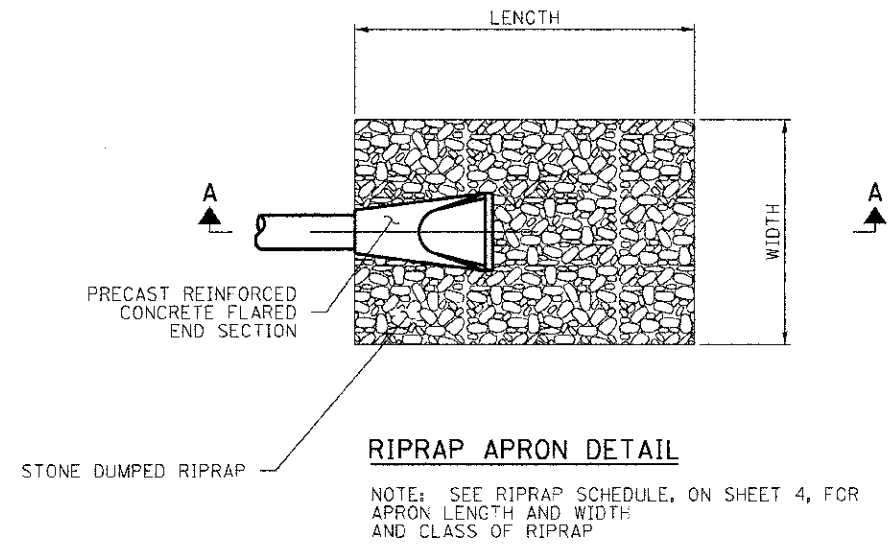


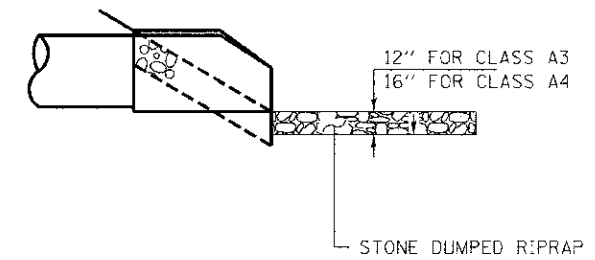
**DITCH LINING CROSS SECTION**  
STA. 490+00 TO STA. 490+90



**DITCH LINING CROSS SECTION**  
STA. 490+90 TO STA. 491+20



**RIPRAP APRON DETAIL**



**CROSS SECTION A-A**

NOTE: BEDDING AND FILTER FABRIC WILL NOT BE REQUIRED UNDER STONE DUMPED RIPRAP.

FILE NAME = 116284-sht-erosioncontrol.dwg	DESIGNED - J.W.F.	REVISED -	<b>STATE OF ILLINOIS FAYETTE COUNTY HIGHWAY DEPARTMENT</b>	<b>EROSION CONTROL DETAIL F.A.S. 717 / C.H. 23 / 900N</b>		C.H.	SECTION	COUNTY	TOTAL SHEETS	SHEET NO.
HAMPTON, LENZINI AND RENWICK, INC. 3905 S. EVERETT DR. SUITE 231 SPRINGFIELD, ILLINOIS 62763	DRAWN - D.T.M.	REVISED -				23	09-09120-00-DR	FAYETTE	76	25
ILLINOIS PROFESSIONAL DESIGN FIRM 167 P.E. / E.C. CORP. 154.003850	CHECKED - M.G.B.	REVISED -				<b>CONTRACT NO. 95702</b>				
PLOT SCALE =	DATE - 01/28/13	REVISED -				SCALE:	SHEET NO. 1 OF 1 SHEETS	STA. TO STA.	ILLINOIS FED. AID PROJECT	
PLOT DATE = 1/28/2013										