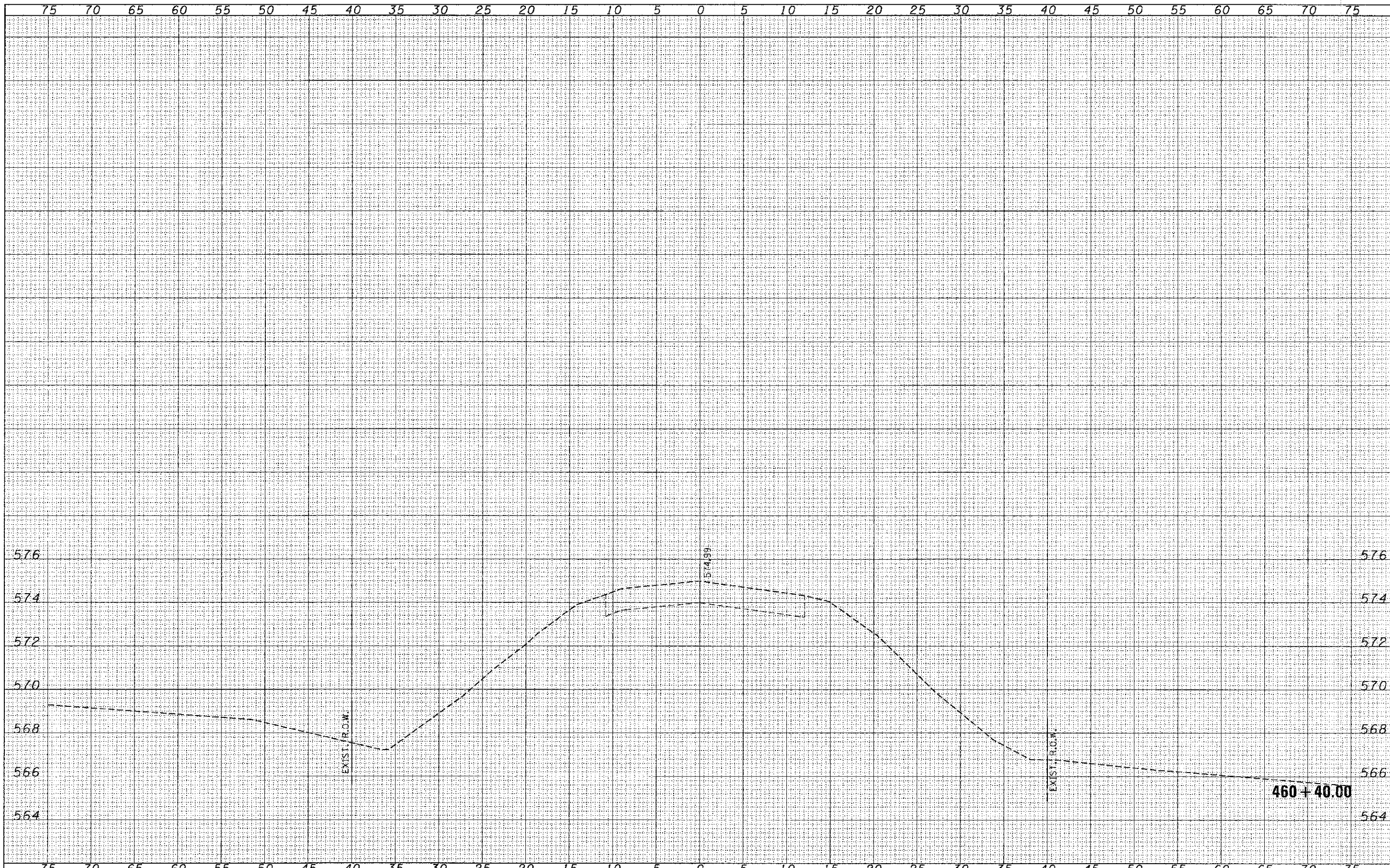


FINAL SURVEY	SURVEYED	BY	DATE
NOTE BOOK	PLOTTED		
	TEMPLATE		
	AREAS		
	CHECKED		

ORIGINAL SURVEY	SURVEYED	BY	DATE
NOTE BOOK	PLOTTED		
	TEMPLATE		
	AREAS		
	CHECKED		



FILE NAME = 110204 sht.mxd.dgn
 USER NAME =
 DESIGNED - J.W.F.
 DRAWN - T.W.K.
 CHECKED - M.G.B.
 DATE - 01/20/13

PLLOT SCALE =
 PLOT DATE = 1/29/2013

DESIGNED - J.W.F.
 DRAWN - T.W.K.
 CHECKED - M.G.B.
 DATE - 01/20/13

STATE OF ILLINOIS
 FAYETTE COUNTY HIGHWAY DEPARTMENT

STATION CROSS SECTIONS
 F.A.S. 717 / C.H. 23 / 900N
 SCALE: H5:V2 SHEET NO. 29 OF 51 SHEETS STA. 460+40.00 TO STA. 460+40.00

C.H.	SECTION	COUNTY	TOTAL SHEETS	SHEET NO.
23	09-00120-00-DR	FAYETTE	76	54
CONTRACT NO. 95702			ILLINOIS FED. AID PROJECT	