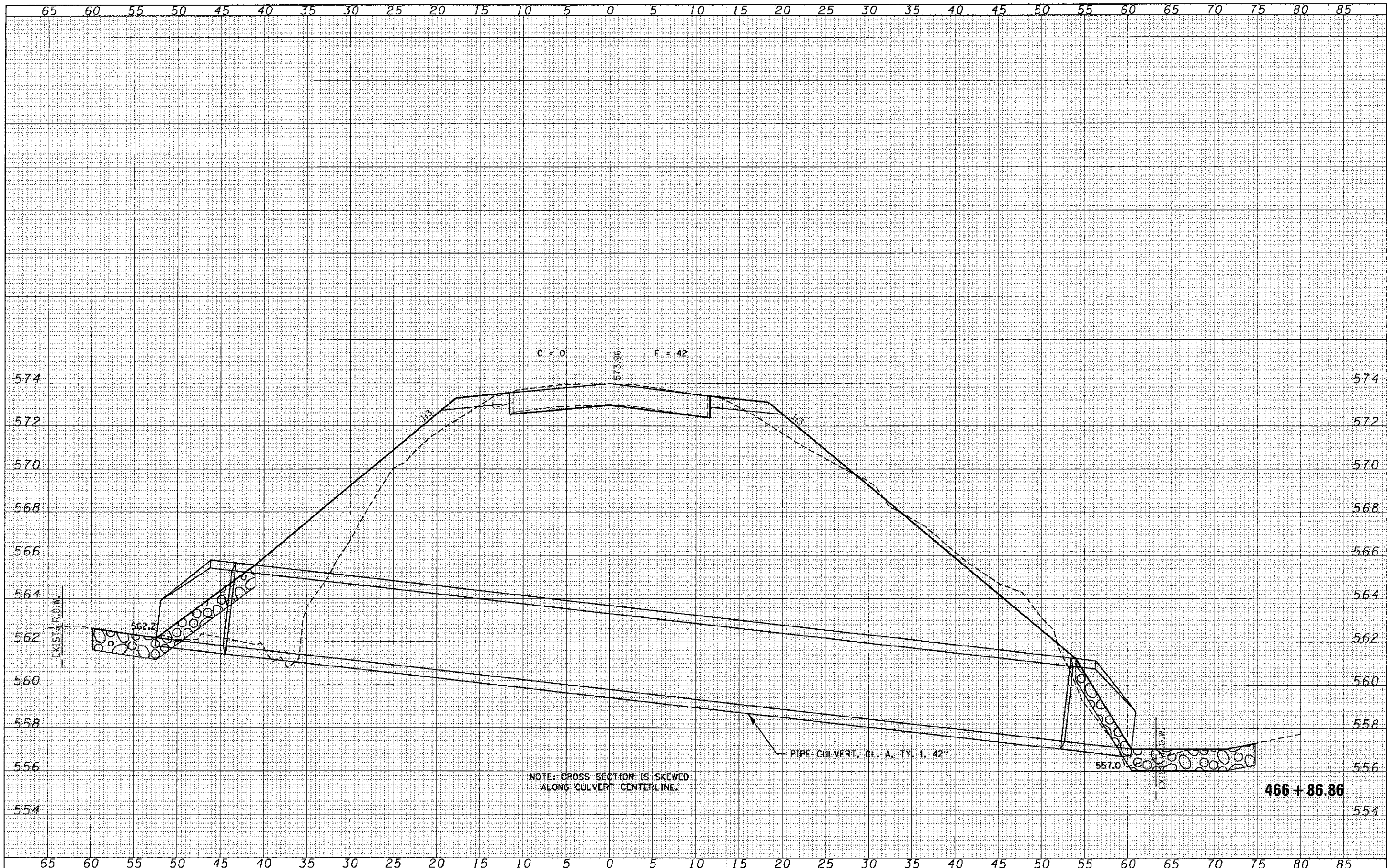


DATE	
BY	
FINAL SURVEY	
NO. OF SHEETS	
NOTE BOOK	
AREAS CHECKED	

DATE	
BY	
ORIGINAL SURVEY	
NO. OF SHEETS	
NOTE BOOK	
AREAS CHECKED	



P.L.L. NAME = 118/04-ans.crs.dwg
 HAMPTON, LENZINI AND RENWICK, INC.
 3008 STEVENSON DRIVE, SUITE 201
 SPRINGFIELD, ILLINOIS 62762
 ILLINOIS PROFESSIONAL DESIGN #104
 LS / PE / SC / 000P / 18420889

USER NAME =
 PLOT SCALE =
 PLOT DATE = 1/29/2013

DESIGNED - J.W.F.
 DRAWN - T.W.K.
 CHECKED - M.G.B.
 DATE - 01/28/13

REVISED -
 REVISED -
 REVISED -
 REVISED -

STATE OF ILLINOIS
 FAYETTE COUNTY HIGHWAY DEPARTMENT

SCALE: H5:V2
 SHEET NO. 31 OF 51 SHEETS
 STA. 466+86.86 TO STA. 466+86.86

STATION CROSS SECTIONS
 F.A.S. 717 / C.H. 23 / 900N

C.H.	SECTION	COUNTY	TOTAL SHEETS	SHEET NO.
23	09-00:20-00-DR	FAYETTE	76	56
CONTRACT NO. 95702			ILLINOIS FED. AID PROJECT	