

STATE OF ILLINOIS
 DEPARTMENT OF TRANSPORTATION
 DIVISION OF HIGHWAYS
 PLANS FOR PROPOSED
 SURFACE TRANSPORTATION RURAL
 CRAWFORD COUNTY
 SECTION 11-00097-00-RS
 FAS 696 (CH 6)
 PROJECT RS-0696 (109)
 JOB NO. C-97-076-12

INDEX OF SHEETS

- 1 COVER SHEET
- 2 TYPICAL SECTIONS

STANDARDS:	701006-04	TRAFFIC CONTROL
	701306-03	TRAFFIC CONTROL
	701301-04	TRAFFIC CONTROL
	701311-03	TRAFFIC CONTROL
	701901-02	TRAFFIC CONTROL DEVICES
	780001-03	PAVEMENT MARKINGS

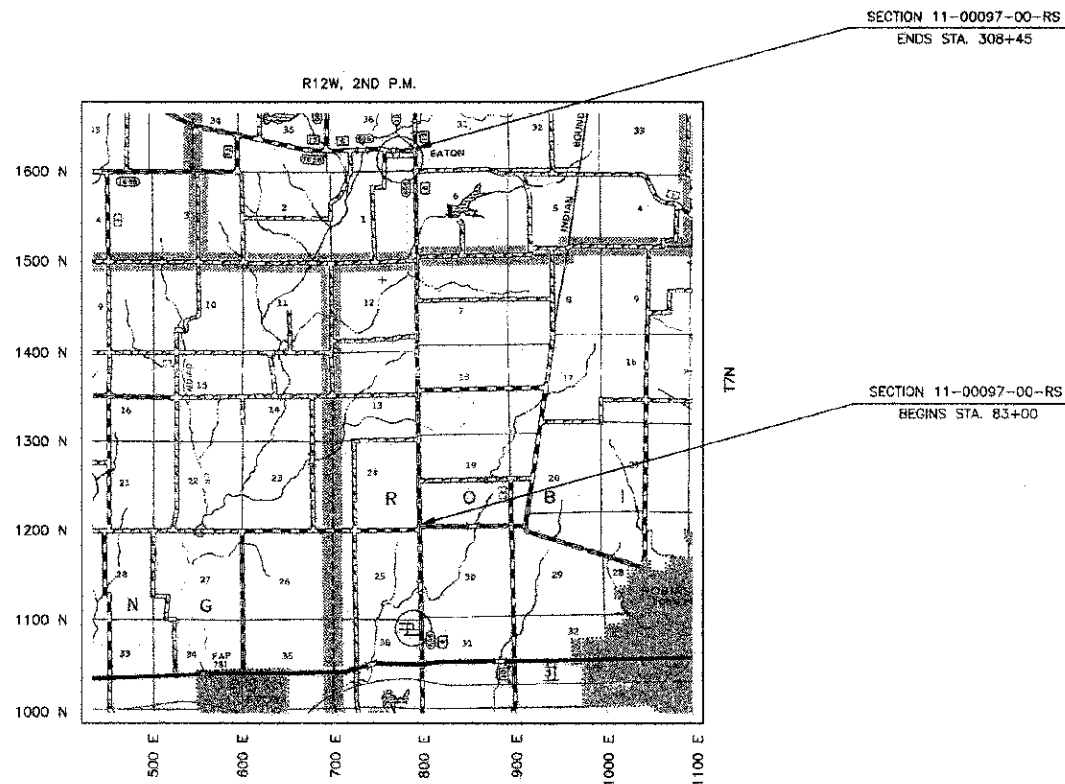
SUMMARY OF QUANTITIES

2,050	FOOT	SHORT-TERM PAVEMENT MARKING REMOVAL	XX003140*
1	L SUM	TRAFFIC CONTROL AND PROTECTION, (SPECIAL)	X7010216
138	TON	AGGREGATE SURFACE COURSE, TYPE B	40200800
5,694	GALLON	BITUMINOUS MATERIALS (PRIME COAT)	40600100
114	TON	AGGREGATE (PRIME COAT)	40600300
98	SQ YD	HOT-MIX ASPHALT SURFACE REMOVAL-BUTT JOINT	40600982
72	SQ YD	TEMPORARY RAMP	40600990
7,043	TON	HOT-MIX ASPHALT BINDER COURSE, IL-19.0, N70	40603085
6,632	TON	HOT-MIX ASPHALT SURFACE COURSE, MIX "C", N70	40603315
3,053	SQ YD	HOT-MIX ASPHALT SURFACE REMOVAL, 2-1/4"	44000158
55,110	SQ YD	AREA REFLECTIVE CRACK CONTROL TREATMENT	44300100
2,413	TON	AGGREGATE SHOULDERS, TYPE B	48101200
1	L SUM	MOBILIZATION	67100100
1	L SUM	TRAFFIC CONTROL AND PROTECTION, STANDARD 701306	70100460
4,100	FOOT	SHORT TERM PAVEMENT MARKING	70300100
51,007	FOOT	PAINT PAVEMENT MARKING-LINE 4"	78001110 *

* SPECIALTY ITEMS

FUNCTIONAL CLASS - RURAL MAJOR COLLECTOR
 ADT = 1700
 DESIGN SPEED = 50 MPH

TOLL FREE JOINT UTILITY LOCATING
 INFORMATION FOR EXCAVATORS (J.U.L.I.E.)
 TELEPHONE NO. 1-800-892-0123



LOCATION MAP

APPROXIMATE SCALE: 1 INCH = 1 MILE
 NET LENGTH = 22,545 FEET = 4.270 MILES

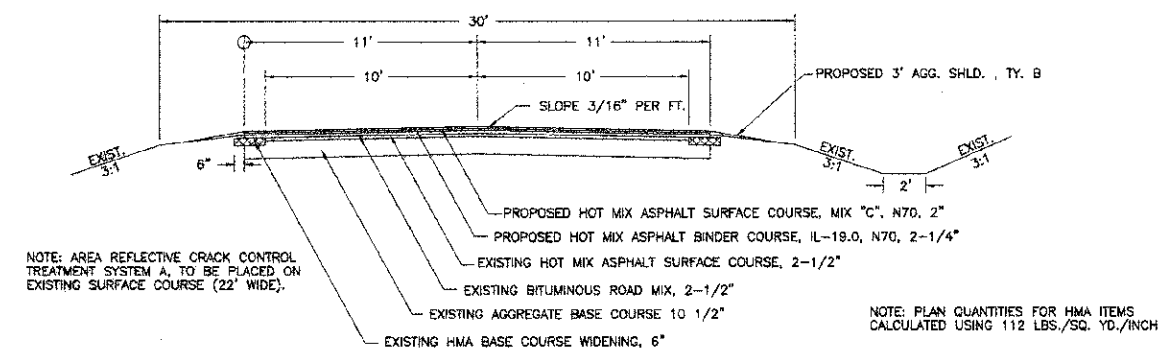


John P. Connor 02/22/2013
 ILLINOIS REGISTERED PROFESSIONAL ENGINEER # 55012
 LICENSE EXPIRES NOVEMBER 30, 2013
 CONNOR & CONNOR, INC.
 PROFESSIONAL DESIGN FIRM #184-000832

ILLINOIS DEPARTMENT OF TRANSPORTATION
APPROVED: <i>Anthony D. ...</i> 2013 CRAWFORD COUNTY ENGINEER
PASSED: <i>Manuel ...</i> 2013 DISTRICT SEVEN ENGINEER OF LOCAL ROADS & STREETS
RELEASING FOR BID BASED ON LIMITED REVIEW: <i>...</i> 2013 DEPUTY DIRECTOR OF HIGHWAYS, REGION FOUR ENGINEER

SECTION	11-00097-00-RS	TOTAL SHEETS	2	SHEET NO.	2
COUNTY	CRAWFORD				
STA.		TO STA.			

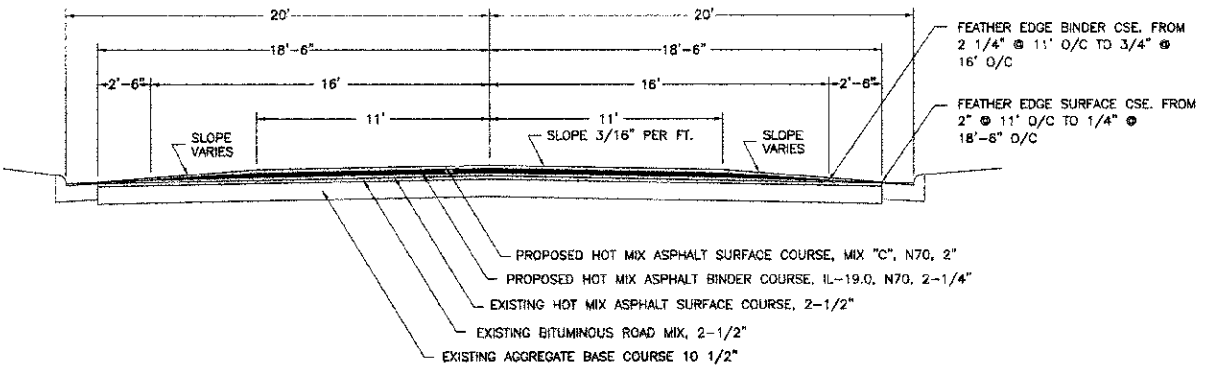
CONTRACT NO. 95706



TYPICAL SECTION OF EXISTING AND PROPOSED ROAD

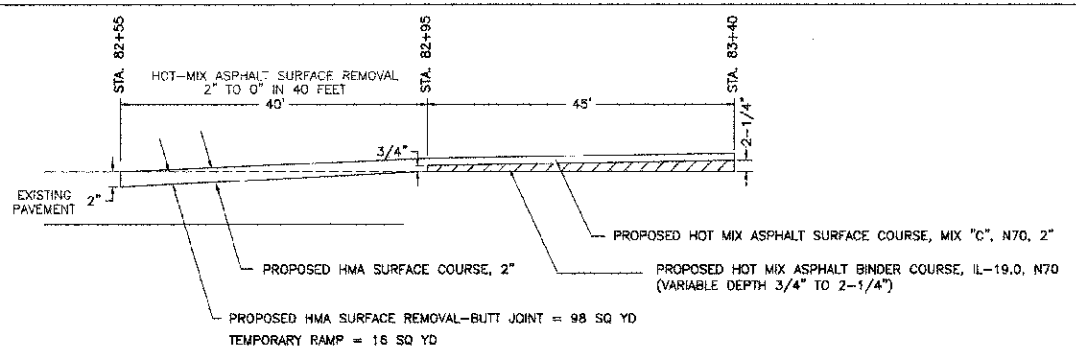
STA. 83+00 TO STA. 297+50

PAVEMENT DESIGN DATA
 ADT = 1825, $\rho = 1715$, SU = 80, NU = 30, CLASS III ROAD (80,000 LB. DESIGN) IBR = 3.0, SNF = 3.10
 PAVEMENT STRUCTURE MATERIALS: EXISTING AGGREGATE BASE 10.5" = $0.06 \times 10.5 = 0.63$
 EXISTING BITUMINOUS ROAD MIX 2-1/2" = $0.11 \times 2.5 = 0.27$
 EXISTING HMA SURFACE COURSE 2-1/2" = $0.23 \times 2.5 = 0.57$
 PROPOSED HMA SURFACE COURSE = $0.40 \times 4.25 = 1.70$
 TOTAL = 3.17

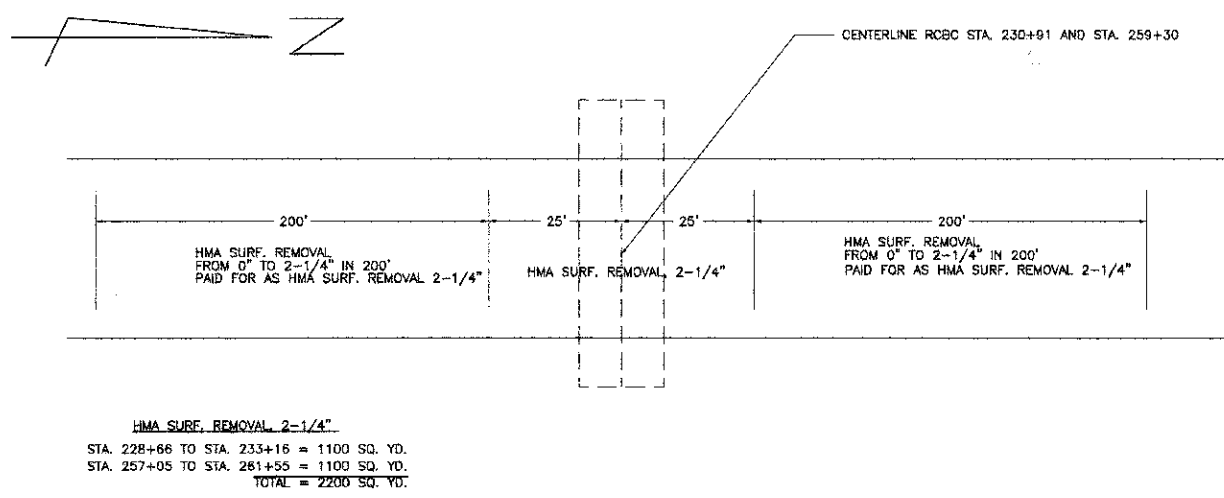


TYPICAL SECTION OF EXISTING AND PROPOSED ROAD

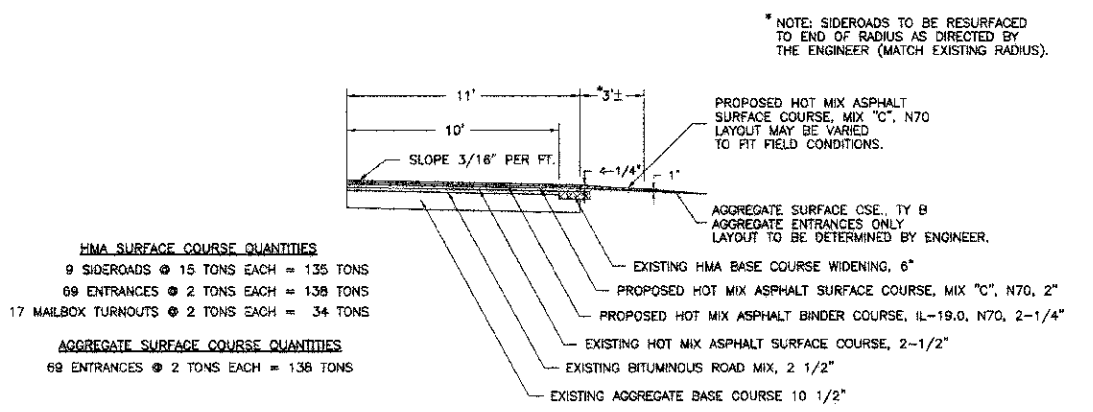
STA. 297+50 TO STA. 308+45



DETAIL OF BUTT-JOINT STA. 82+55



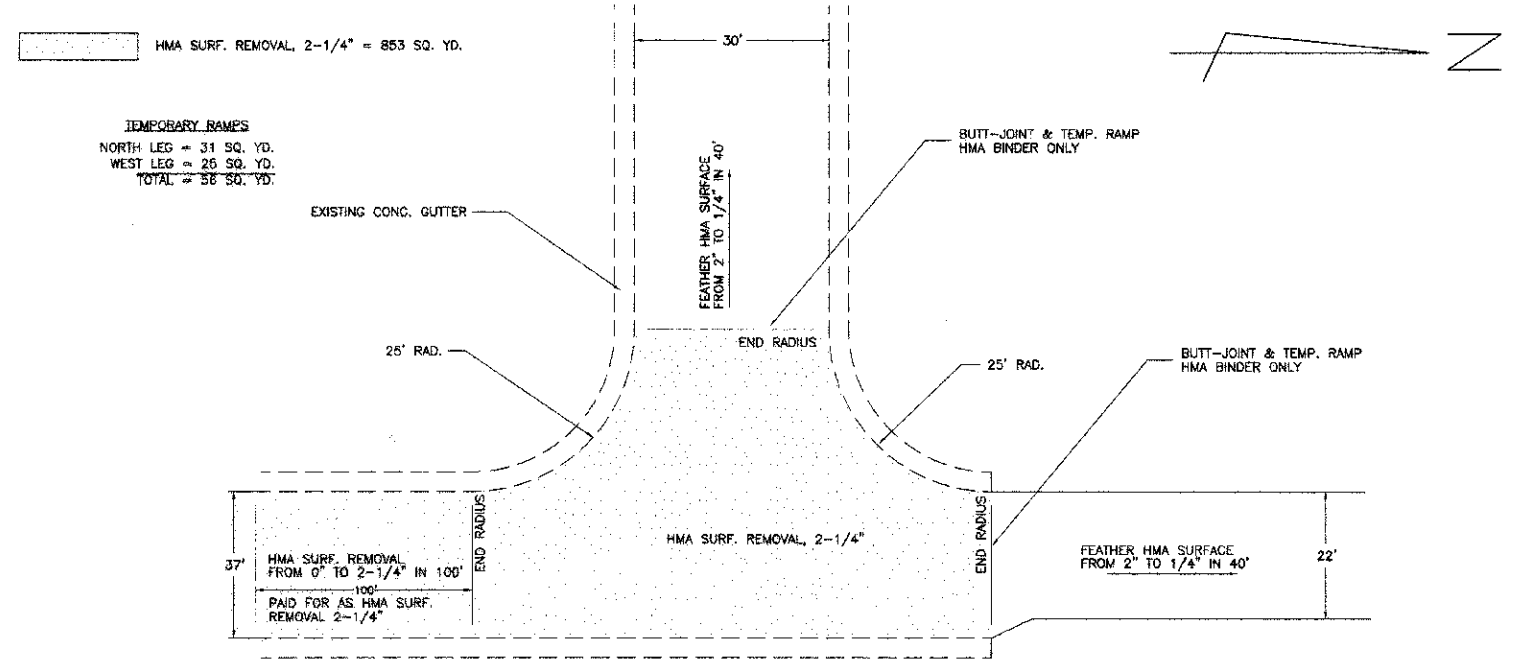
DETAIL OF HMA SURFACE REMOVAL STA. 230+91 AND STA. 259+30



DETAIL OF RESURFACING SIDEROADS, ENTRANCES & MAILBOX TURNOUTS

PAINT PAVEMENT MARKING LINE 4" (TOTAL = 51,007 FT.)

CENTERLINE STRIPE	
STA. 83+00 TO STA. 308+45	= 5,636 FT.
EDGE LINE	
STA. 83+00 TO STA. 308+45	= 44,221 FT.
NO PASSING ZONE	
RT. STA. 237+80 TO STA. 243+50	= 600 FT.
LT. STA. 245+50 TO STA. 251+00	= 550 FT.
TOTAL = 1150 FT.	



DETAIL OF RESURFACING INTERSECTION STA. 308+45

		CONNOR & CONNOR, Inc. CONSULTING ENGINEERS		
		210 East Locust Street ROBINSON, ILLINOIS 62454	Phone: 618-544-8823 Fax: 618-544-3812	