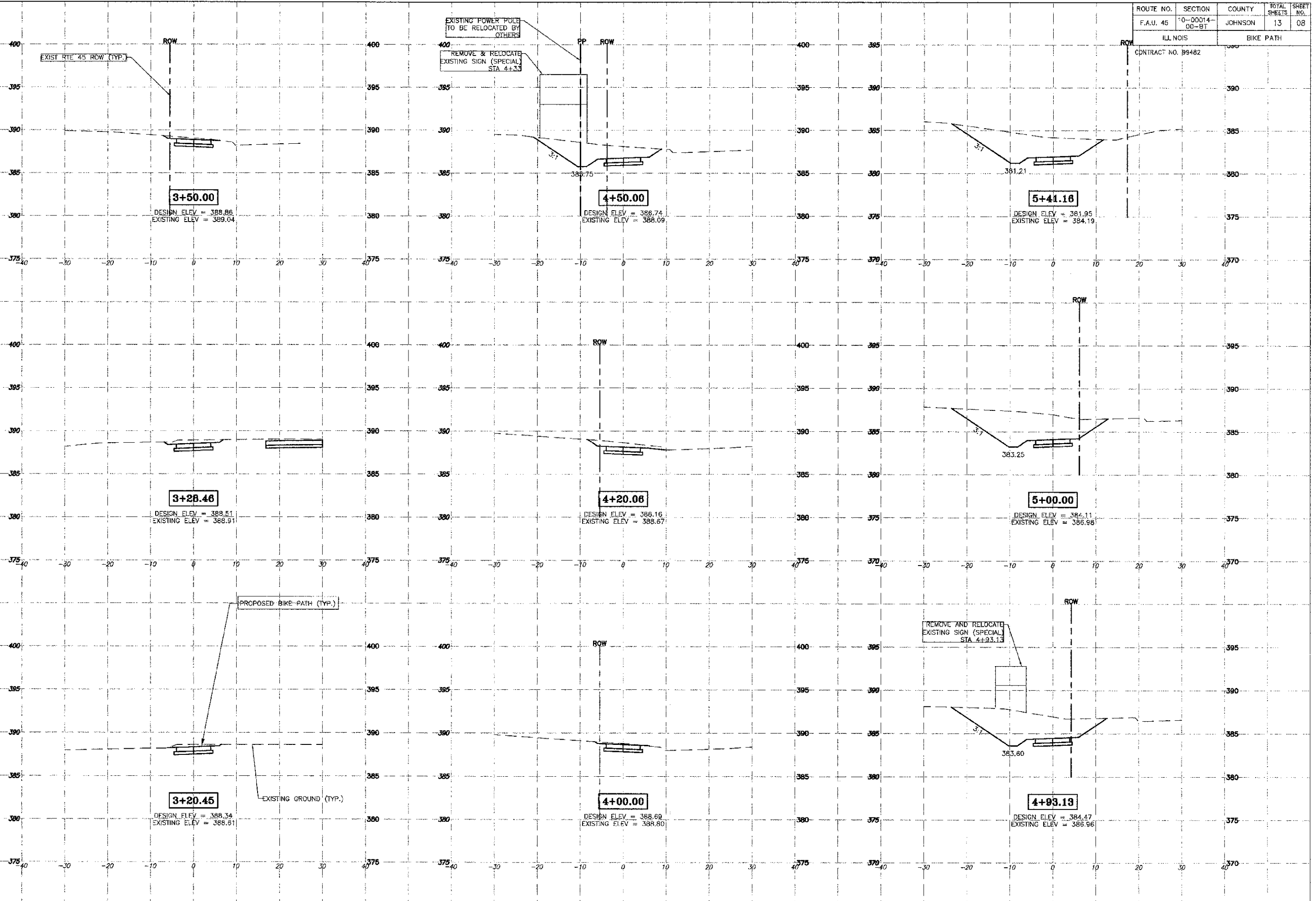


ROUTE NO.	SECTION	COUNTY	TOTAL SHEETS	SHEET NO.
F.A.U. 45	0-00014-00-BT	JOHNSON	13	08

ILLINOIS BIKE PATH  
CONTRACT NO. B9482



**3+50.00**  
DESIGN ELEV = 388.86  
EXISTING ELEV = 389.04

**4+50.00**  
DESIGN ELEV = 388.74  
EXISTING ELEV = 388.09

**5+41.16**  
DESIGN ELEV = 381.95  
EXISTING ELEV = 384.19

**3+28.46**  
DESIGN ELEV = 388.51  
EXISTING ELEV = 388.91

**4+20.06**  
DESIGN ELEV = 388.16  
EXISTING ELEV = 388.67

**5+00.00**  
DESIGN ELEV = 384.11  
EXISTING ELEV = 386.98

**3+20.45**  
DESIGN ELEV = 388.34  
EXISTING ELEV = 388.61

**4+00.00**  
DESIGN ELEV = 388.69  
EXISTING ELEV = 388.80

**4+93.13**  
DESIGN ELEV = 384.47  
EXISTING ELEV = 386.96

VIENNA BICYCLE/PEDESTRIAN PATH - CROSS-SECTIONS - STA 3+20.45 TO 5+41.16