

STATE OF ILLINOIS
DEPARTMENT OF TRANSPORTATION
DIVISION OF HIGHWAYS

ROUTE NO.	SECTION	COUNTY	TOTAL SHEETS	SHEET NO.
F.A.U. 45	10-00014-00-BT	JOHNSON	13	01
ILLINOIS			BIKE PATH	

CONTRACT NO. 99482

- 000001-06 STANDARD SYMBOLS, ABBREVIATIONS AND PATTERNS
- 280001-07 TEMPORARY EROSION CONTROL SYSTEMS
- 420001-07 PAVEMENT JOINTS
- 424001-07 PERPENDICULAR CURB RAMP FOR SIDEWALKS
- 424016-01 MID-BLOCK CURB RAMP FOR SIDEWALKS
- 424026-01 ENTRANCE/ALLEY PEDESTRIAN CROSSINGS
- 424031-01 MEDIAN PEDESTRIAN CROSSINGS
- 542301-03 PRC FLARED END SECTIONS
- 606001-05 CONCRETE CURB TYPE B AND COMBINATION CONCRETE CURB AND GUTTER
- 701006-04 OFF-RD OPS, 2L, 2W, 15' TO 24" FROM PVMT EDGE
- 701301-04 LANE CLOSURE, 2L, 2S, SHORT TIME
- 701901-02 TRAFFIC CONTROL DEVICES
- 720001-01 SIGN PANEL MOUNTING DETAILS
- 720006-03 SIGN PANEL ERECTION DETAILS
- 720011-01 METAL POSTS FOR SIGNS, MARKERS AND DELINEATORS
- 729001-01 APPLICATIONS OF TYPES A AND B METAL POSTS (FOR SIGNS & MARKERS)
- 780001-03 TYPICAL PAVEMENT MARKINGS

NOTE: USE LATEST STANDARDS
LOCATED IN SPECIAL PROVISIONS.

PLANS FOR PROPOSED
BICYCLE/PEDESTRIAN PATH
ILLINOIS TRANSPORTATION ENHANCEMENT PROGRAM

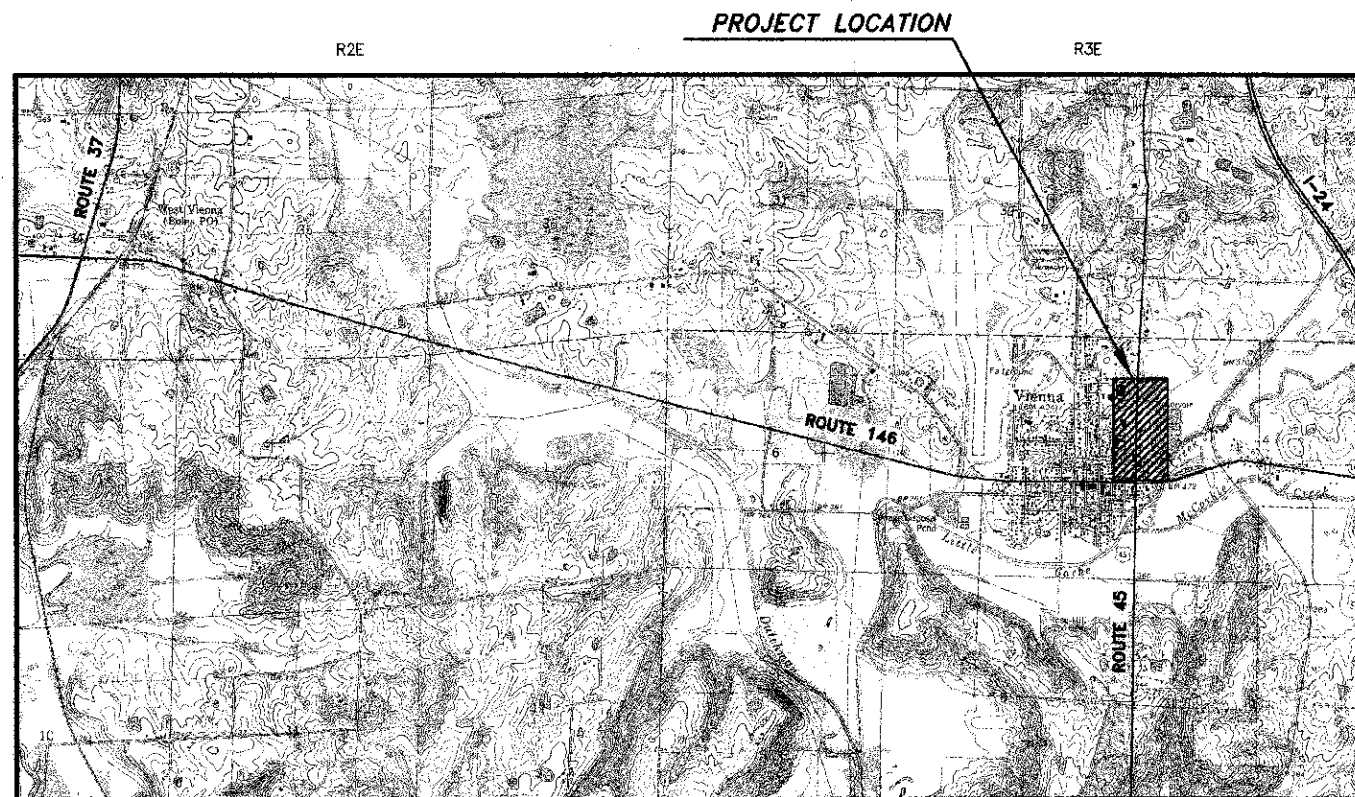
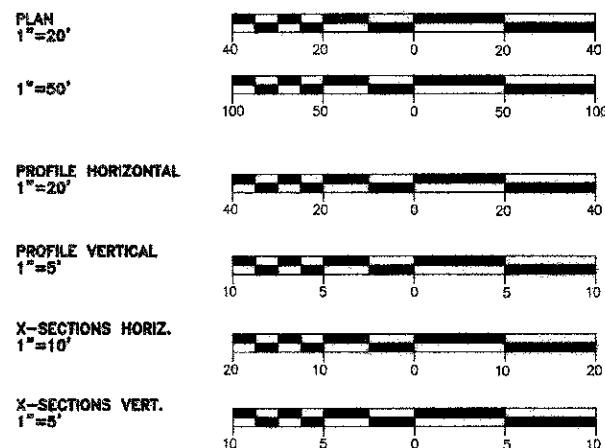
FAU ROUTE 45
SECTION 10-00014-00-BT
PROJECT NO. TE-00D9(115)
JOB NO. C-99-513-11
VIENNA, ILLINOIS



SUMMARY OF QUANTITIES			
ITEM NO.	DESCRIPTION	UNIT	QUANTITY
20100210	TREE REMOVAL (OVER 15 UNITS DIAMETER)	UNIT	72
20100500	TREE REMOVAL, ACRES	ACRE	0.35
20200100	EARTH EXCAVATION	CU YD	1,049
20400100	BORROW EXCAVATION	CU YD	900
21400100	GRADING AND SHAPING DITCHES	FOOT	120
25000200	SEEDING, CLASS 2	ACRE	0.85
25000400	NITROGEN FERTILIZER NUTRIENT	POUND	80
25000500	PHOSPHORUS FERTILIZER NUTRIENT	POUND	80
25000600	POTASSIUM FERTILIZER NUTRIENT	POUND	80
25000700	AGRICULTURAL GROUND LIMESTONE	TON	1.7
25100115	MULCH, METHOD 2	ACRE	0.85
28000305	TEMPORARY DITCH CHECKS	FOOT	80
28000400	PERIMETER EROSION BARRIER	FOOT	2,000
28000500	INLET AND PIPE PROTECTION	EACH	4
35100100	AGGREGATE BASE COURSE, TYPE A	TON	550
40200100	AGGREGATE SURFACE COURSE, TYPE A	TON	250
42400300	PORTLAND CEMENT CONCRETE SIDEWALK 6 INCH	SQ FT	19,350
42400800	DETECTABLE WARNINGS	SQ FT	192
44000500	COMBINATION CURB AND GUTTER REMOVAL	FOOT	24
54213669	PRECAST REINFORCED CONCRETE FLARED END SECTIONS 24"	EACH	2
67100100	MOBILIZATION	L SUM	1
72000100	SIGN PANEL - TYPE 1	SQ FT	120
72900100	METAL POST - TYPE B	FOOT	166
78001100	PAINT PAVEMENT MARKING - LETTERS AND SYMBOLS	SQ FT	66.1
78001180	PAINT PAVEMENT MARKING - LINE 24"	FOOT	80
542A1069	PIPE CULVERTS, CLASS A, TYPE 2 24"	FOOT	30
X0327008	REMOVE AND RELOCATE SIGN (SPECIAL)	EACH	2
X6640300	CHAIN LINK FENCE REMOVAL	FOOT	12
X7010216	TRAFFIC CONTROL AND PROTECTION, (SPECIAL)	L SUM	1

Δ SPECIALTY ITEMS

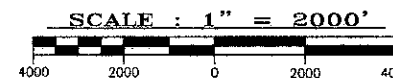
SCALES IN FEET



NET LENGTH OF PROJECT = 2313.65 L.F. = 0.438 MI.

LOCATION MAP

CONTRACTOR SHALL CONTACT J.U.L.I.E. OPERATOR AT 1-800-892-0123 FOR MARKING OF EXISTING UNDERGROUND UTILITIES. J.U.L.I.E. SHOULD BE CONTACTED A MINIMUM OF 96 HOURS IN ADVANCE OF CONSTRUCTION. CONTRACTOR SHALL MEET ALL REQUIREMENTS FOR CROSSING OF ANY EXISTING UTILITIES.



SH. NO.	INDEX OF SHEETS DESCRIPTION
1.	COVER SHEET
2.	GENERAL LAYOUT
3.	TYPICAL SECTIONS AND DETAILS
4.	CLEARING AND REMOVALS
5.	PLAN AND PROFILE
6.	EROSION CONTROL
7-12.	CROSS SECTIONS
13.	INTERSECTION DETAILS

STATE OF ILLINOIS
DEPARTMENT OF TRANSPORTATION

APPROVED: 11/30, 2012
Don Summer
MAYOR, CITY OF VIENNA

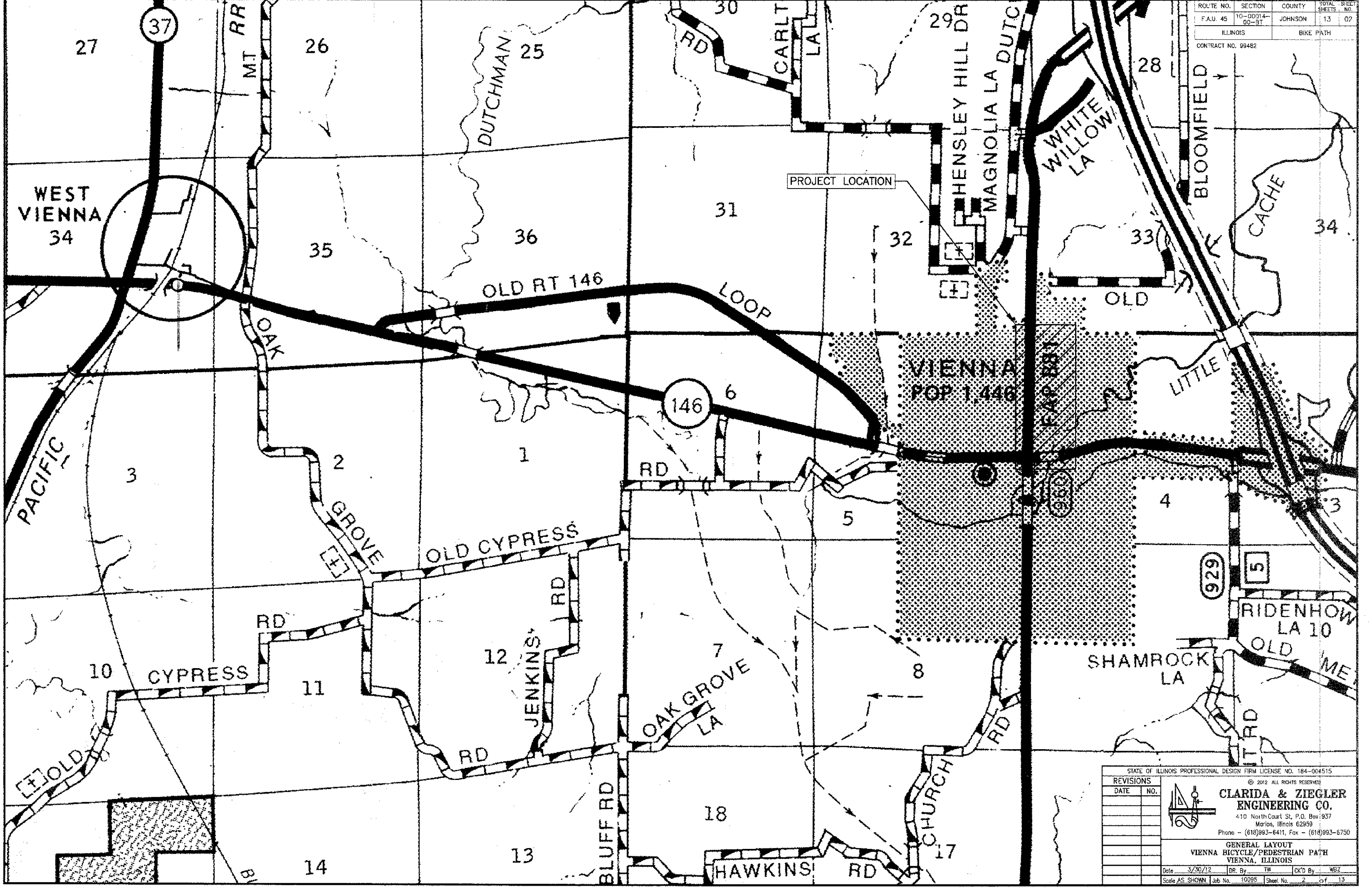
PASSED: Jan 7, 2013
Don W. Heltzel
DISTRICT 9 ENGINEER OF LOCAL ROADS & STREETS

RELEASING FOR BID BASED ON LIMITED REVIEW: 11/26/12
Jeffrey J. ...
ASST. DEPUTY DIRECTOR OF HIGHWAYS, REGION 5 ENGINEER

PREPARED BY:
CLARIDA & ZIEGLER ENGINEERING
MARION, ILLINOIS

W. Brian Ziegler
WILLIAM BRIAN ZIEGLER, P.E.
DATE: 11/26/12

EXPIRES: NOVEMBER 30, 2013



ROUTE NO.	SECTION	COUNTY	TOTAL SHEETS	SHEET NO.
F.A.U. 45	10-00014-00-37	JOHNSON	13	02
ILLINOIS		BIKE PATH		

CONTRACT NO. 99482

STATE OF ILLINOIS PROFESSIONAL DESIGN FIRM LICENSE NO. 184-004515
 © 2012 ALL RIGHTS RESERVED

REVISIONS	
DATE	NO.

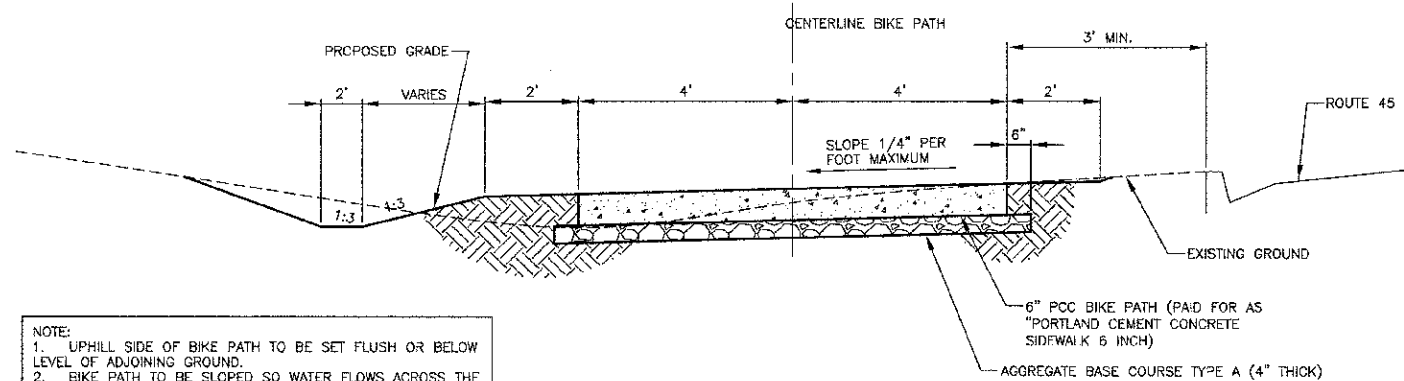
CLARIDA & ZIEGLER ENGINEERING CO.
 410 North Court St. P.O. Box 937
 Marion, Illinois 62959
 Phone - (618)993-6411, Fax - (618)993-6750

GENERAL LAYOUT
 VIENNA BICYCLE/PEDESTRIAN PATH
 VIENNA, ILLINOIS

Date 3/30/12 DR. By TW CK'D By WBL
 Scale AS SHOWN Job No. 10095 Sheet No. 2 of 13

ROUTE NO.	SECTION	COUNTY	TOTAL SHEETS	SHEET NO.
F.A.U. 45	10-00014-00-B	JOHNSON	13	03
ILLINOIS		BIKE PATH		

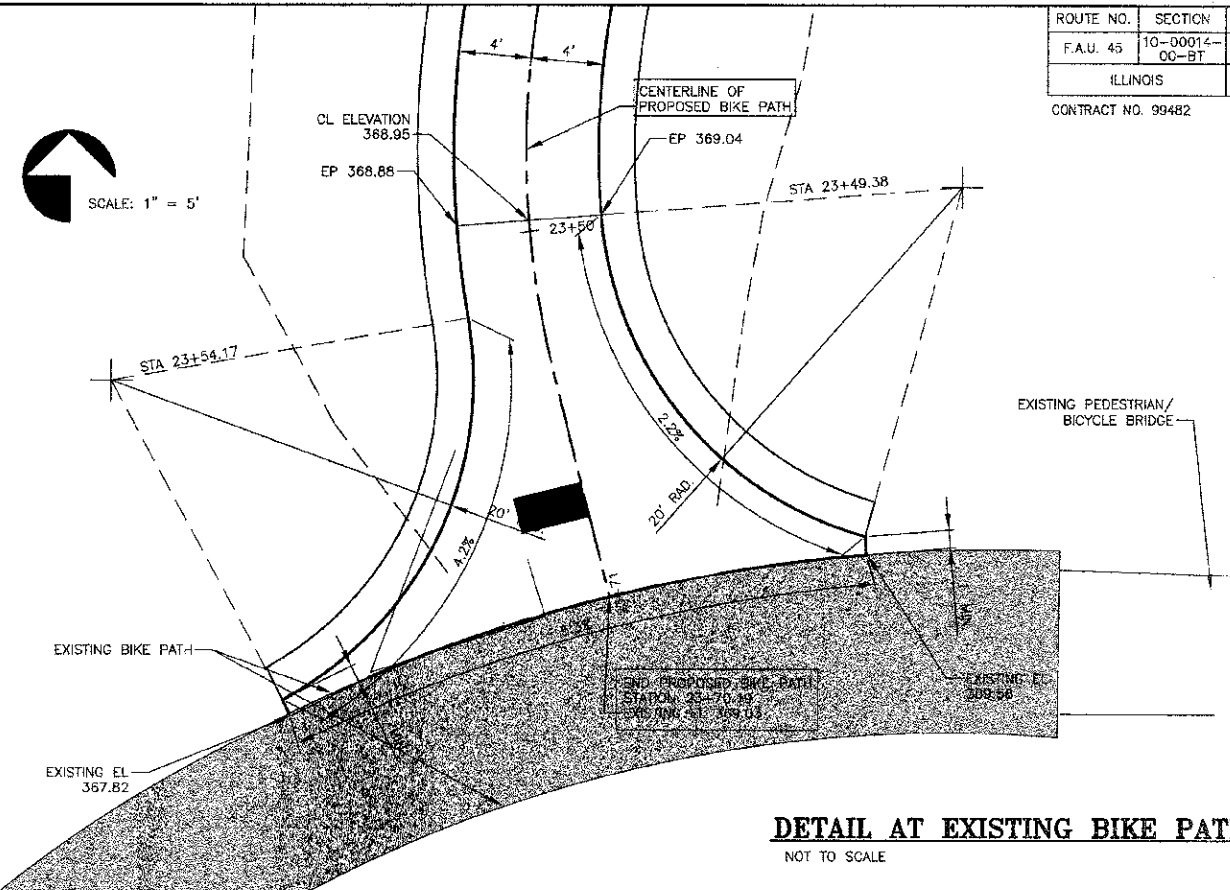
CONTRACT NO. 99482



NOTE:
 1. UPHILL SIDE OF BIKE PATH TO BE SET FLUSH OR BELOW LEVEL OF ADJOINING GROUND.
 2. BIKE PATH TO BE SLOPED SO WATER FLOWS ACROSS THE PATH IN THE NATURAL DIRECTION OF FLOW.
 3. DITCH, IF REQUIRED, TO BE ON DOWNHILL SIDE OF BIKE PATH, EXCEPT AS SHOWN ON CROSS SECTIONS.
 4. BIKE PATH TO BE CONSTRUCTED ACCORDING TO THE PROVISIONS OF ARTICLE 424 OF THE STANDARD SPECIFICATIONS, EXCEPT THE CONCRETE SHALL BE GROOVED TO PRODUCE SLABS NO MORE THAN 8 FEET ON ANY SIDE.

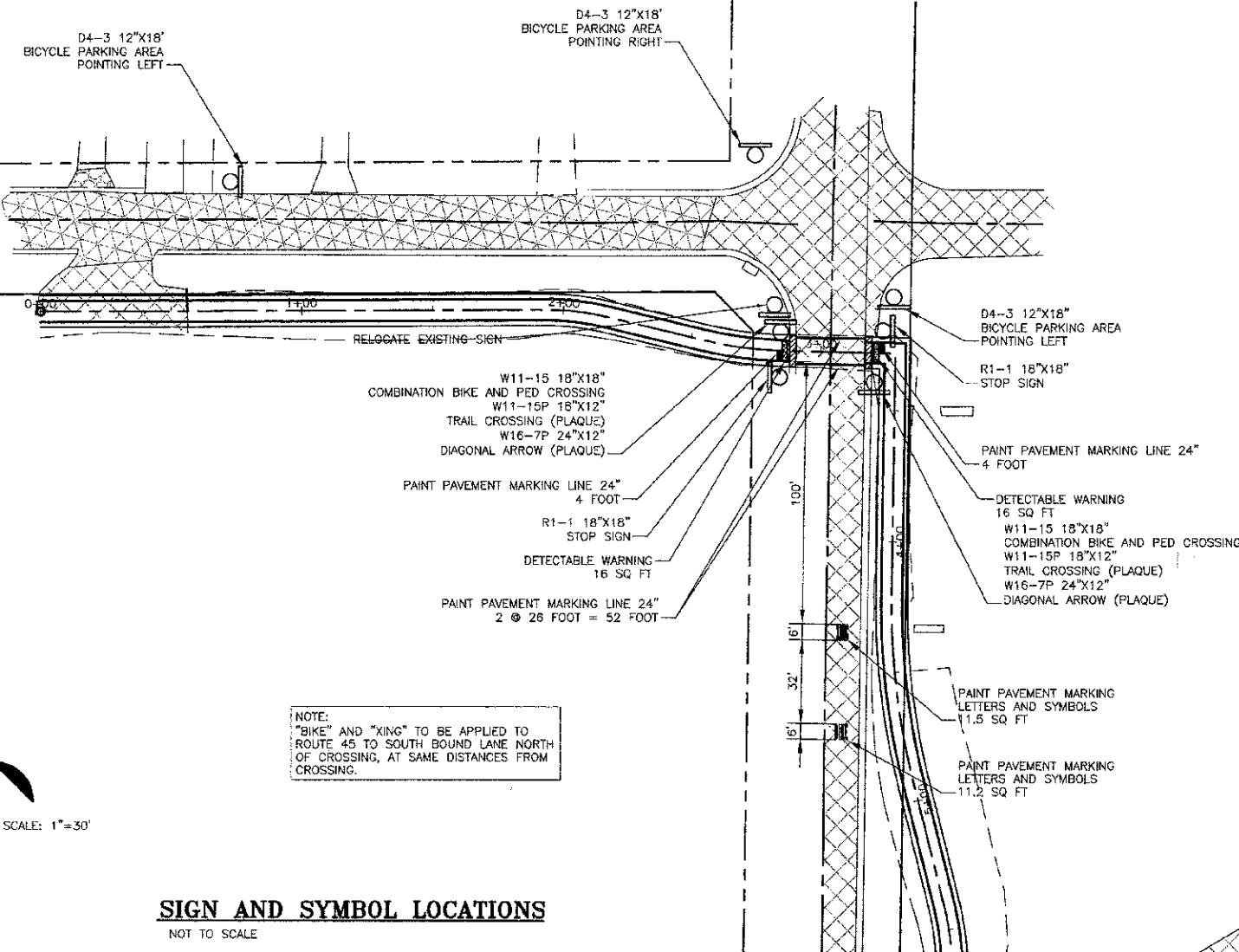
TYPICAL SECTION OF BIKE PATH

NOT TO SCALE



DETAIL AT EXISTING BIKE PATH

NOT TO SCALE



NOTE:
 "BIKE" AND "XING" TO BE APPLIED TO ROUTE 45 TO SOUTH BOUND LANE NORTH OF CROSSING, AT SAME DISTANCES FROM CROSSING.



SIGN AND SYMBOL LOCATIONS

NOT TO SCALE

SCHEDULE OF PROPOSED SIGNS

LOCATION	DESCRIPTION	SIGN PANEL TYPE 1	SQ. FT.	METAL POST TYPE B
0+73 LT	BIKE PARKING AREA 12'X18"	D4-3	1.5	12'
1+85 LT	COMB. BIKE & PED XING - 18'X18"	W11-15	2.25	14'
	TRAIL CROSSING (PLAQUE) 18'X12"	W11-15P	1.5	
	DIAGONAL ARROW (PLAQUE) 24'X12"	W16-7P	2.0	
1+85 RT	STOP SIGN 30" X 30"	R1-1	6.25	12'
2+62 LT	BIKE PARKING AREA 12'X18"	D4-3	1.5	12'
2+62 RT	STOP SIGN 30" X 30"	R1-1	6.25	12'
3+20 LT	BIKE PARKING AREA 12'X18"	D4-3	1.5	12'
3+40 RT	COMB. BIKE & PED XING - 18'X18"	W11-15	2.25	14'
	TRAIL CROSSING (PLAQUE) 18'X12"	W11-15P	1.5	
	DIAGONAL ARROW (PLAQUE) 24'X12"	W16-7P	2.0	
3+73 RT	BIKE WARNING SIGN 30" X 30"	W11-1	6.25	12'
6+31 LT	BIKE WARNING SIGN 30" X 30"	W11-1	6.25	12'
6+43 LT	COMB. BIKE & PED XING - 18'X18"	W11-15	2.25	14'
	TRAIL CROSSING (PLAQUE) 18'X12"	W11-15P	1.5	
	DIAGONAL ARROW (PLAQUE) 24'X12"	W16-7P	2.0	
6+51 RT	STOP SIGN 30" X 30"	R1-1	6.25	12'
6+77 RT	BIKE WARNING SIGN 30" X 30"	W11-1	6.25	12'
6+79 RT	COMB. BIKE & PED XING - 18'X18"	W11-15	2.25	14'
	TRAIL CROSSING (PLAQUE) 18'X12"	W11-15P	1.5	
	DIAGONAL ARROW (PLAQUE) 24'X12"	W16-7P	2.0	
6+81 LT	STOP SIGN 30" X 30"	R1-1	6.25	12'
12+33 RT	STOP SIGN 30" X 30"	R1-1	6.25	12'
12+69 LT	COMB. BIKE & PED XING - 18'X18"	W11-15	2.25	14'
	TRAIL CROSSING (PLAQUE) 18'X12"	W11-15P	1.5	
	DIAGONAL ARROW (PLAQUE) 24'X12"	W16-7P	2.0	
13+00 LT	COMB. BIKE & PED XING - 18'X18"	W11-15	2.25	14'
	TRAIL CROSSING (PLAQUE) 18'X12"	W11-15P	1.5	
	DIAGONAL ARROW (PLAQUE) 24'X12"	W16-7P	2.0	
13+00 RT	COMB. BIKE & PED XING - 18'X18"	W11-15	2.25	14'
	TRAIL CROSSING (PLAQUE) 18'X12"	W11-15P	1.5	
	DIAGONAL ARROW (PLAQUE) 24'X12"	W16-7P	2.0	
13+43 LT	STOP SIGN 30" X 30"	R1-1	6.25	12'
23+66 RT	STOP SIGN 30" X 30"	R1-1	6.25	12'

SCHEDULE OF SYMBOLS AND LETTERS

LOCATION	DESCRIPTION	PAINT SQ. FT.
2+97 LT	"BIKE"	11.2
2+97 LT	"XING"	11.5
3+11 RT	"BIKE"	11.2
3+11 RT	"XING"	11.5
6+65 LT	"BIKE"	11.2
6+65 LT	"XING"	11.5

STATE OF ILLINOIS PROFESSIONAL DESIGN FIRM LICENSE NO. 184-004515

© 2012 ALL RIGHTS RESERVED.

CLARIDA & ZIEGLER ENGINEERING CO.
 410 North Court St, P.O. Box 357
 Marion, Illinois 62959
 Phone - (618)993-6411, Fax - (618)993-6750

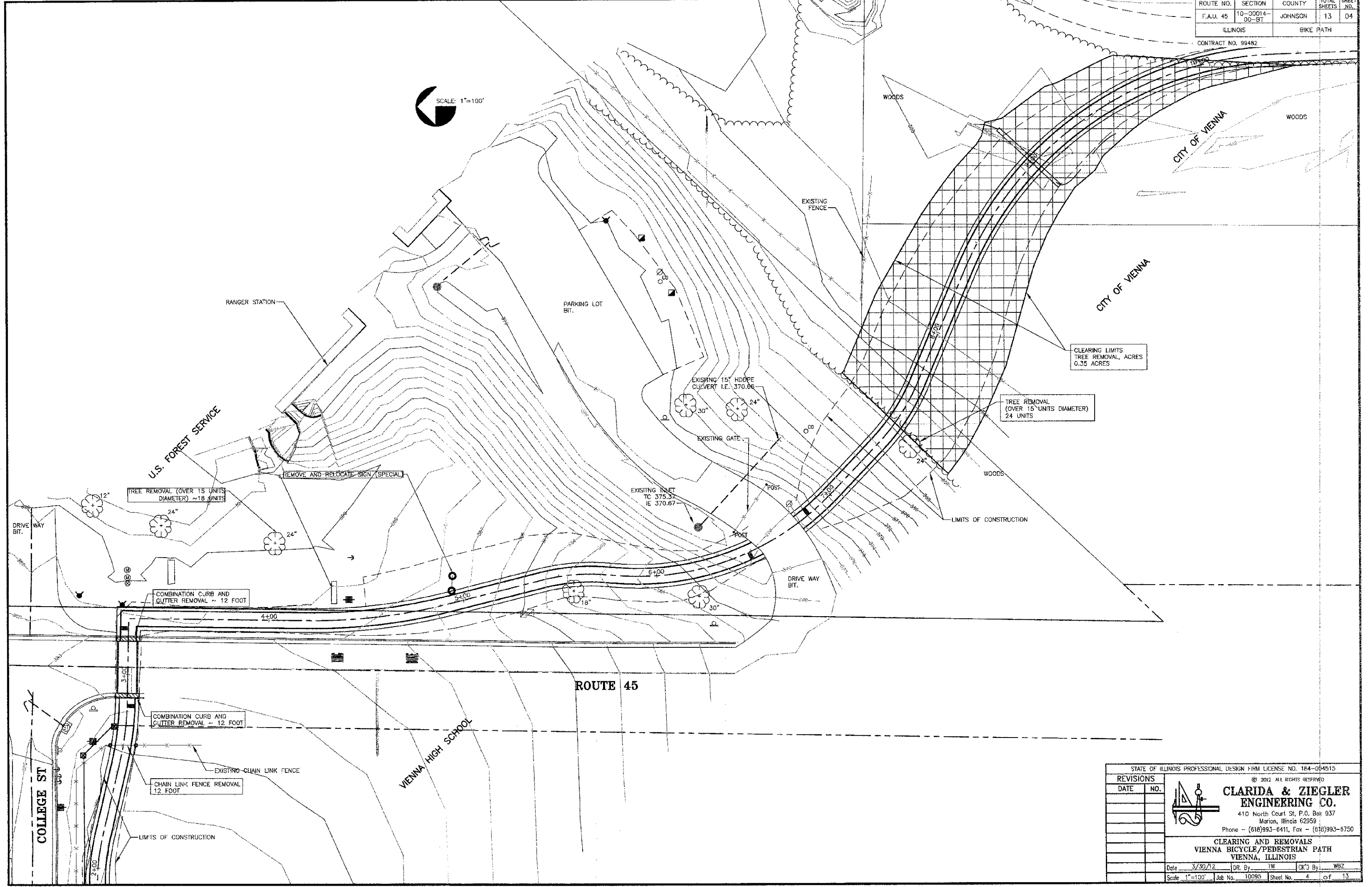
TYPICAL SECTIONS AND DETAILS
 VIENNA BICYCLE/PEDESTRIAN PATH
 VIENNA, ILLINOIS

REVISIONS	DATE	NO.

Date: 3/30/12 DR. By: TW CK'D By: WGBZ
 Scale: NONE Job No. 10095 Sheet No. 3 of 13

ROUTE NO.	SECTION	COUNTY	TOTAL SHEETS	SHEET NO.
F.A.U. 45	10-00014-00-BT	JOHNSON	13	04
ILLINOIS		BIKE PATH		

CONTRACT NO. 99482



CLEARING LIMITS
TREE REMOVAL, ACRES
0.35 ACRES

TREE REMOVAL
(OVER 15" UNITS DIAMETER)
24 UNITS

TREE REMOVAL (OVER 15" UNITS DIAMETER) ~18 UNITS

COMBINATION CURB AND GUTTER REMOVAL ~ 12 FOOT

COMBINATION CURB AND GUTTER REMOVAL ~ 12 FOOT

CHAIN LINK FENCE REMOVAL 12 FOOT

STATE OF ILLINOIS PROFESSIONAL DESIGN FIRM LICENSE NO. 184-094515

© 2012 ALL RIGHTS RESERVED

CLARIDA & ZIEGLER ENGINEERING CO.
410 North Court St, P.O. Box 937
Marion, Illinois 62959
Phone - (618)993-6411, Fax - (618)993-6750

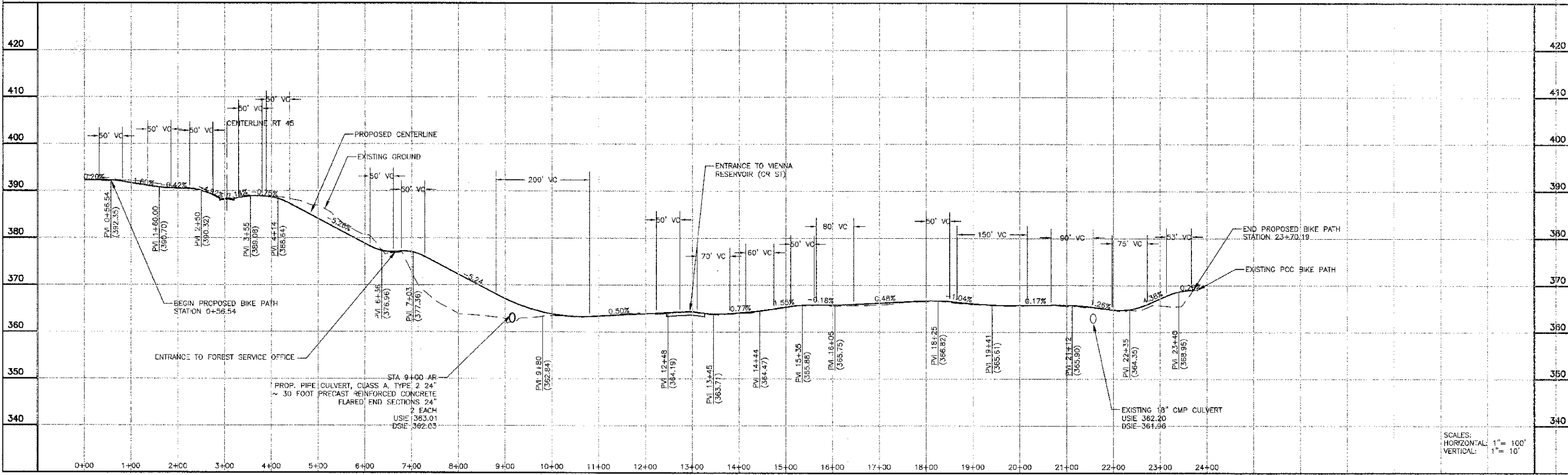
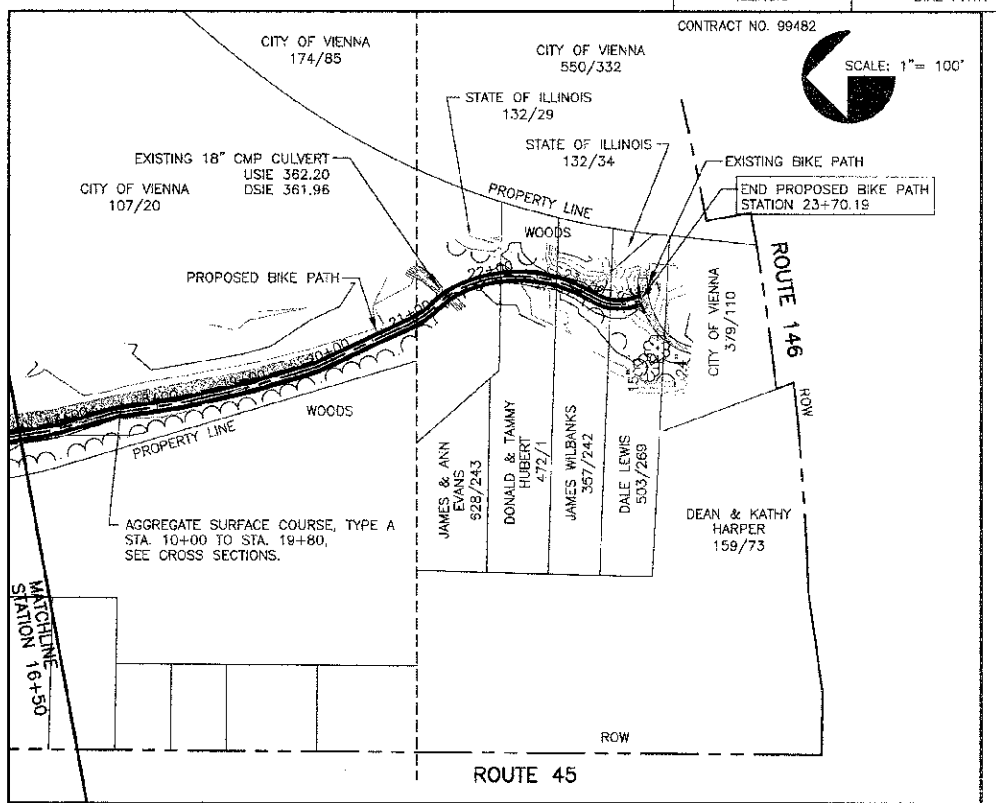
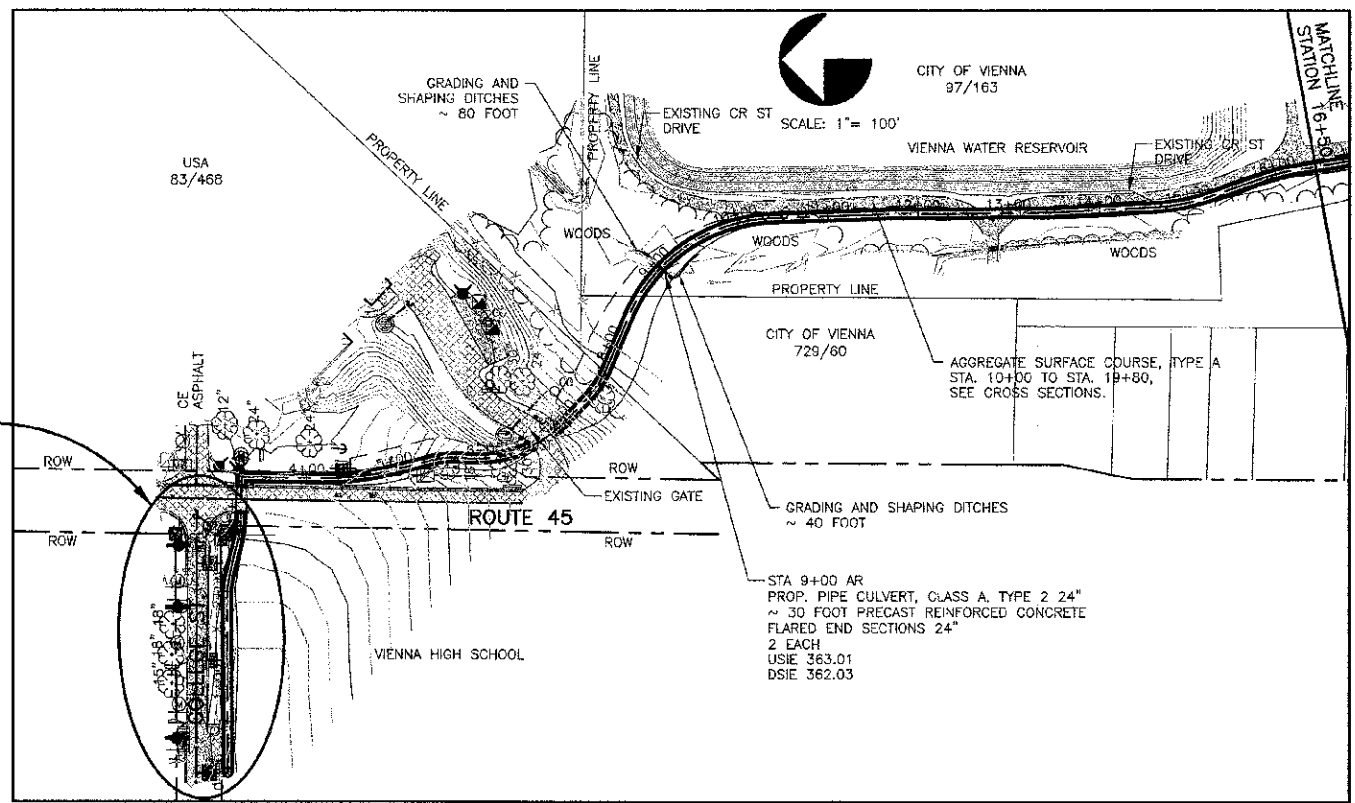
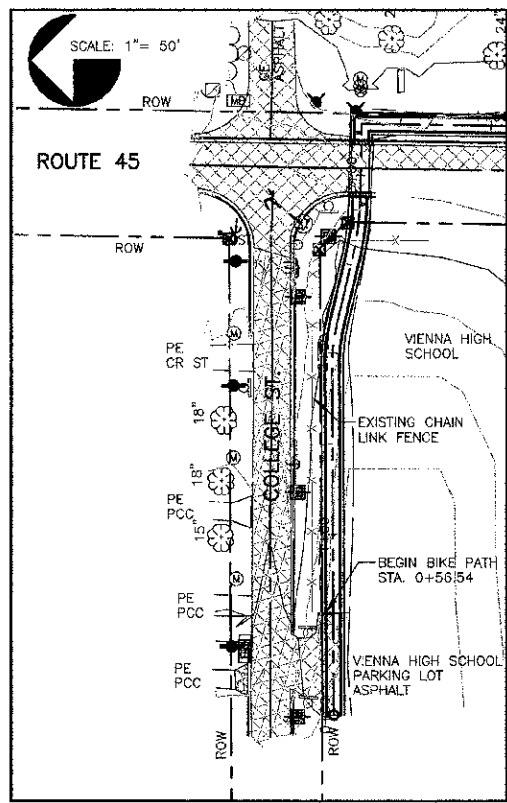
CLEARING AND REMOVALS
VIENNA BICYCLE/PEDESTRIAN PATH
VIENNA, ILLINOIS

REVISIONS	
DATE	NO.

Date: 3/30/12 DR. By: TW CK'G By: WBZ
Scale: 1"=100' Job No. 10095 Sheet No. 4 of 13

ROUTE NO.	SECTION	COUNTY	TOTAL SHEETS	SHEET NO.
F.A.U. 45	10-00014-00-BT	JOHNSON	13	05

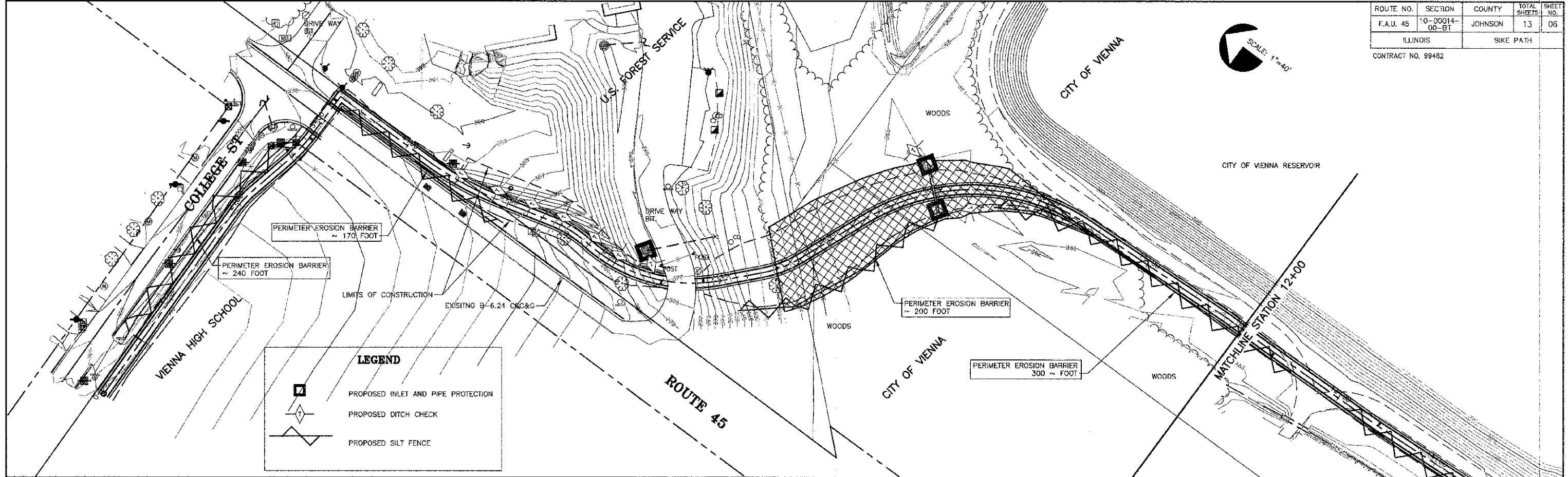
ILLINOIS BIKE PATH CONTRACT NO. 99482



VIENNA BICYCLE/PEDESTRIAN PATH - PLAN AND PROFILE

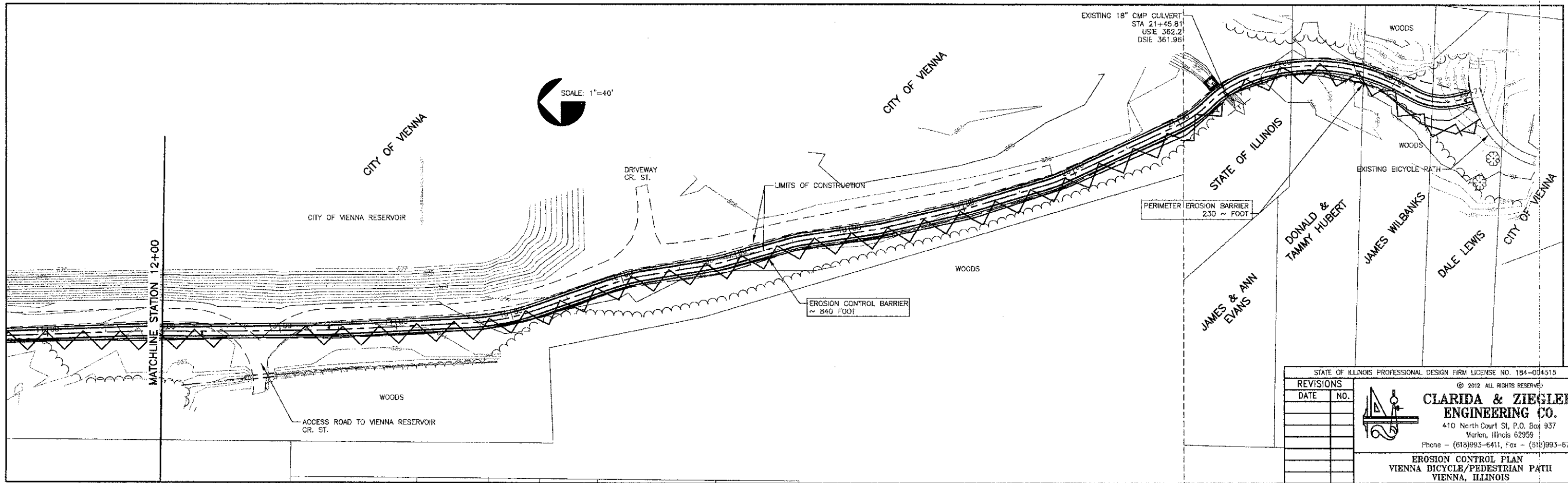
ROUTE NO.	SECTION	COUNTY	TOTAL SHEETS	SHEET NO.
F.A.U. 45	10-00014-00-BT	JOHNSON	13	06
ILLINOIS		BIKE PATH		

CONTRACT NO. 99482



LEGEND

- PROPOSED INLET AND PIPE PROTECTION
- PROPOSED DITCH CHECK
- PROPOSED SILT FENCE



STATE OF ILLINOIS PROFESSIONAL DESIGN FIRM LICENSE NO. 184-004515

© 2012 ALL RIGHTS RESERVED

CLARIDA & ZIEGLER ENGINEERING CO.
 410 North Court St, P.O. Box 937
 Marion, Illinois 62959
 Phone - (618)993-6411, Fax - (618)993-6750

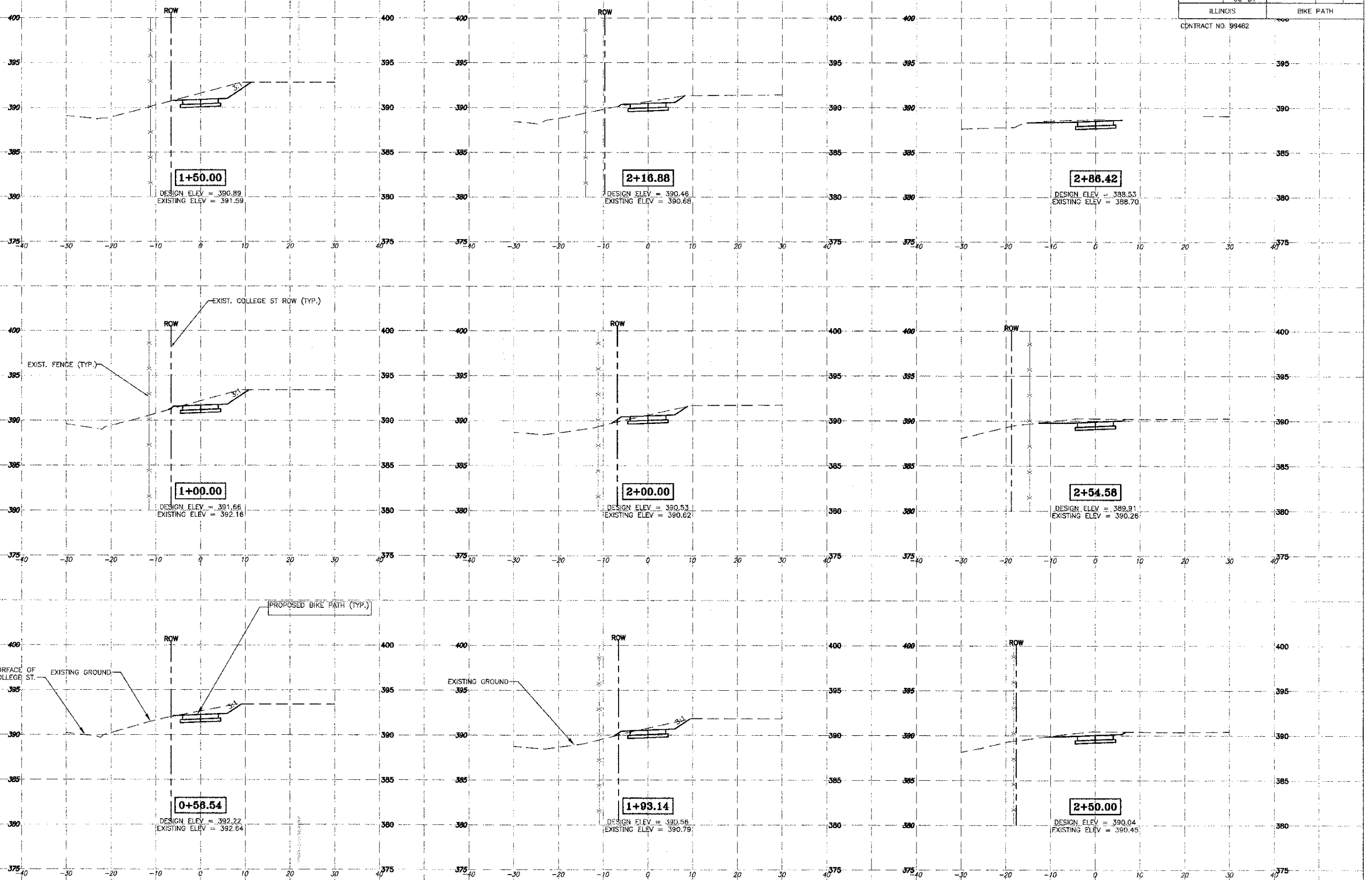
EROSION CONTROL PLAN
 VIENNA BICYCLE/PEDESTRIAN PATH
 VIENNA, ILLINOIS

REVISIONS	DATE	NO.

Date: 3/30/12 DR. By: TW CK'D By: WBZ
 Scale: 1"=100' Job No. 10095 Sheet No. 6 of 13

ROUTE NO.	SECTION	COUNTY	TOTAL SHEETS	SHEET NO.
F.A.U. 45	10-00014-CC-BT	JOHNSON	13	07
ILLINOIS		BIKE PATH		

CONTRACT NO. 99482

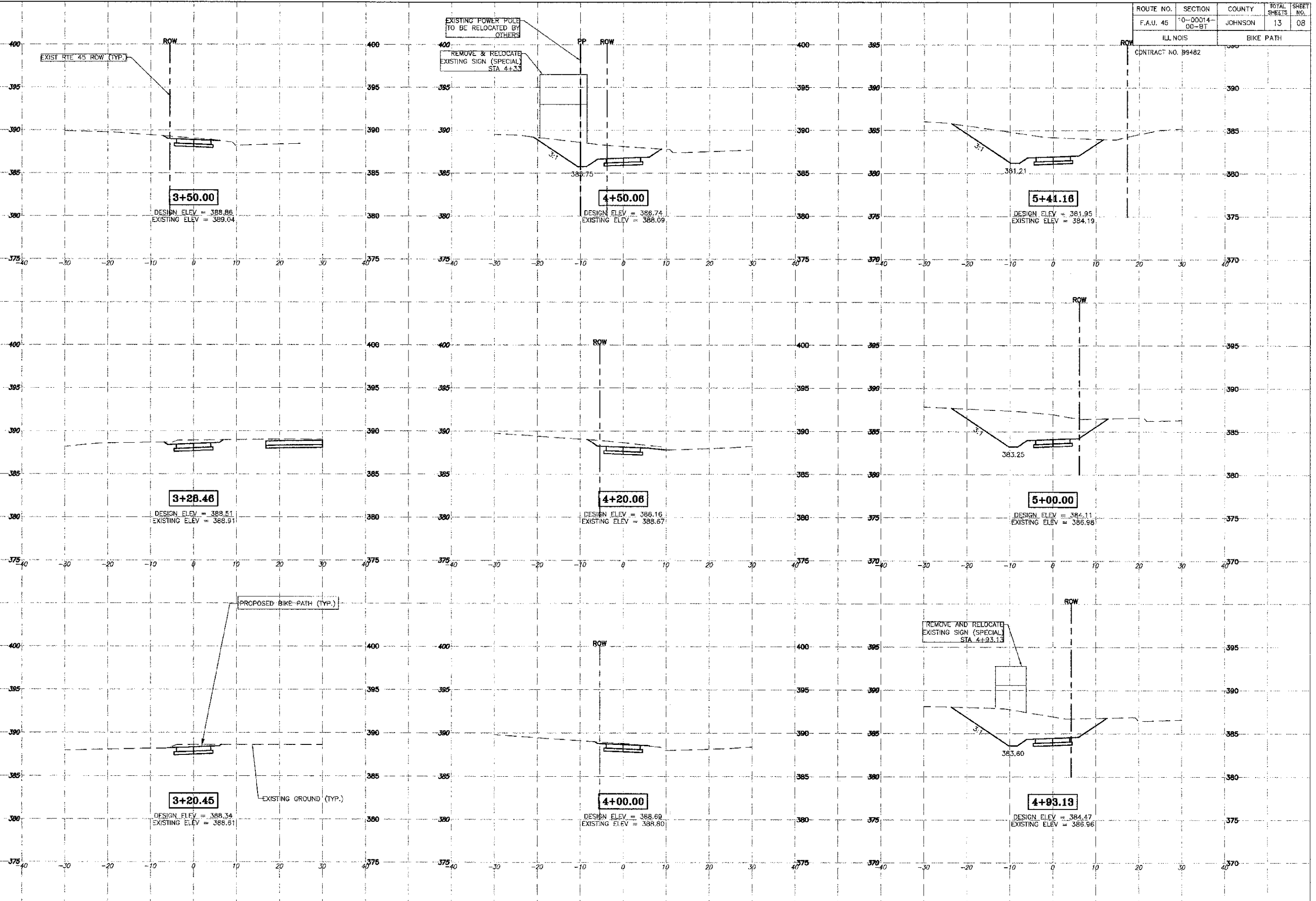


VIENNA BICYCLE/PEDESTRIAN PATH - CROSS-SECTIONS - STA 0+56.54 TO 2+86.42

PROJECT No. 10095
SHT. 07 OF 13

ROUTE NO.	SECTION	COUNTY	TOTAL SHEETS	SHEET NO.
F.A.U. 45	0-00014-00-BT	JOHNSON	13	08

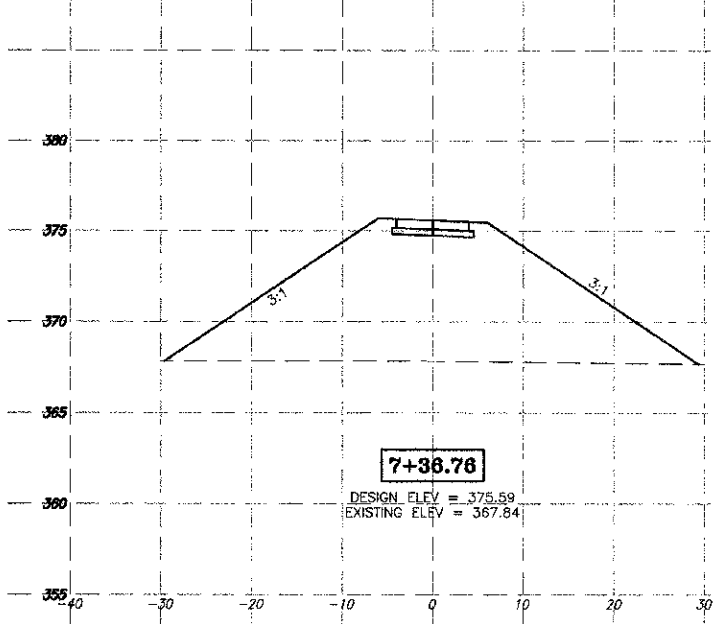
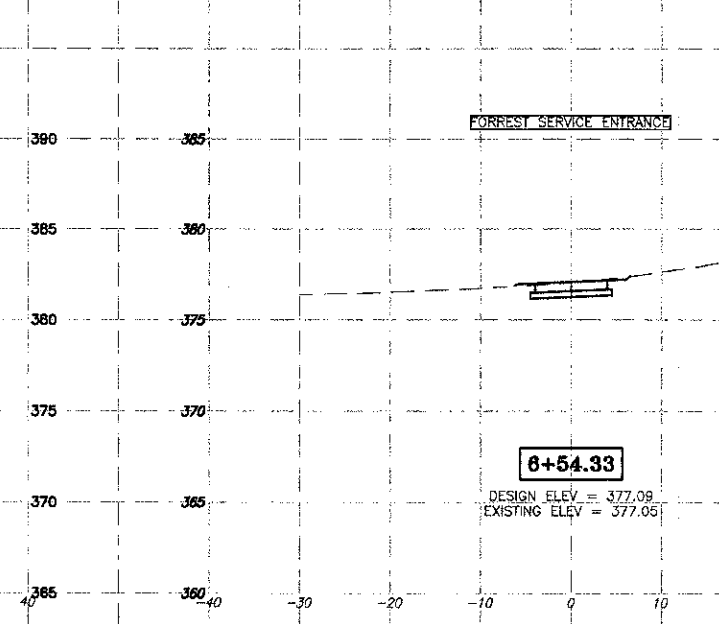
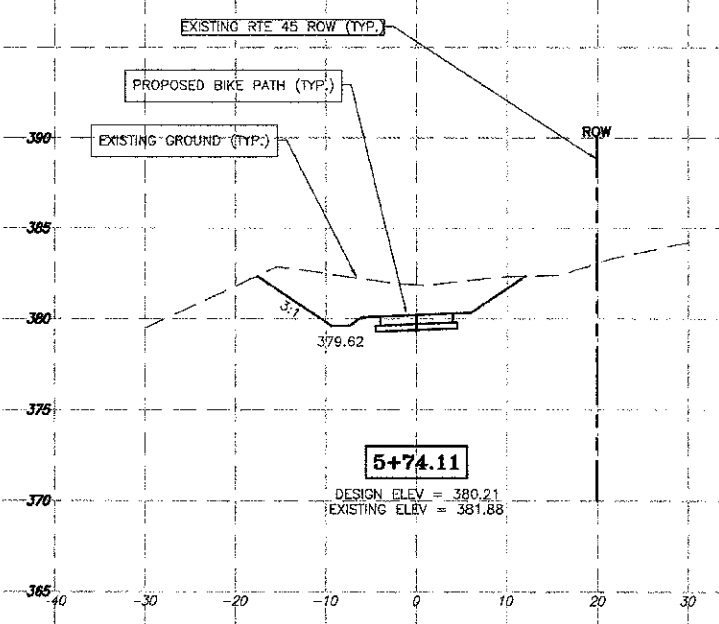
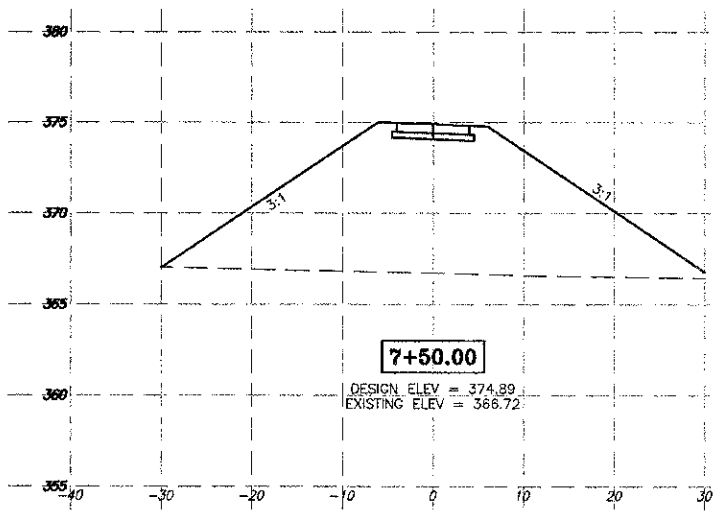
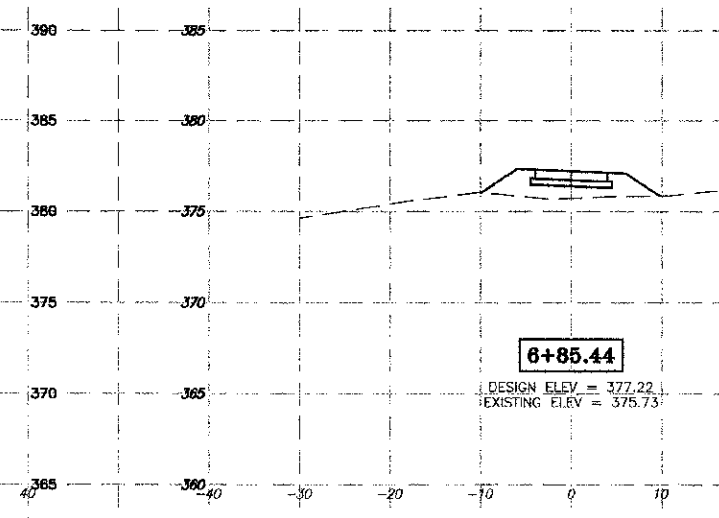
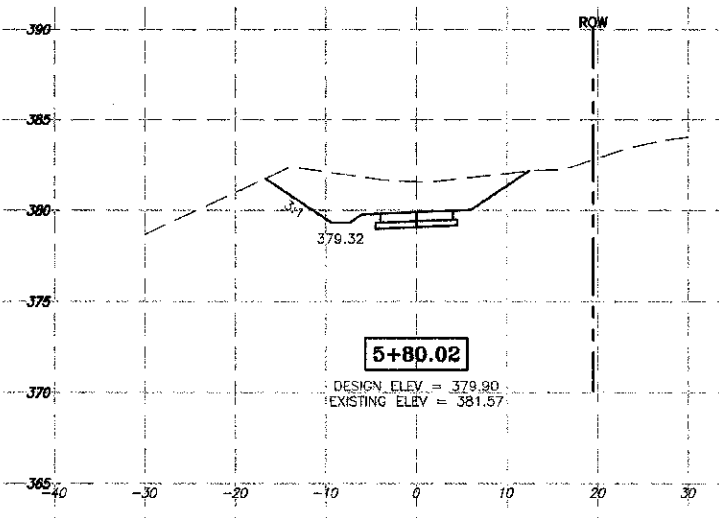
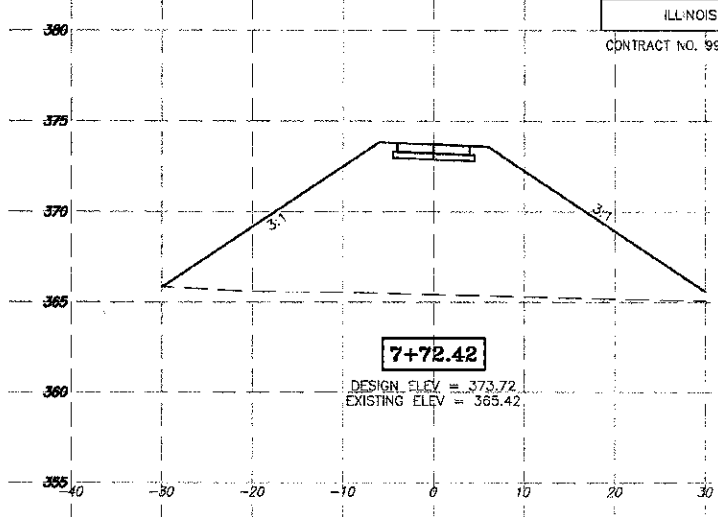
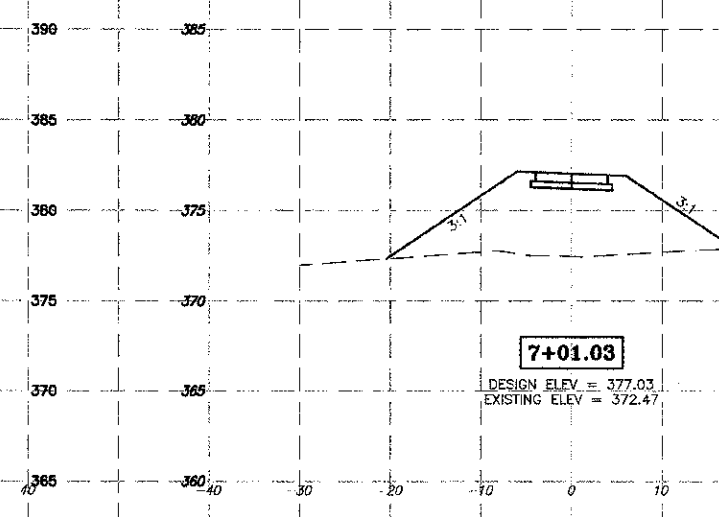
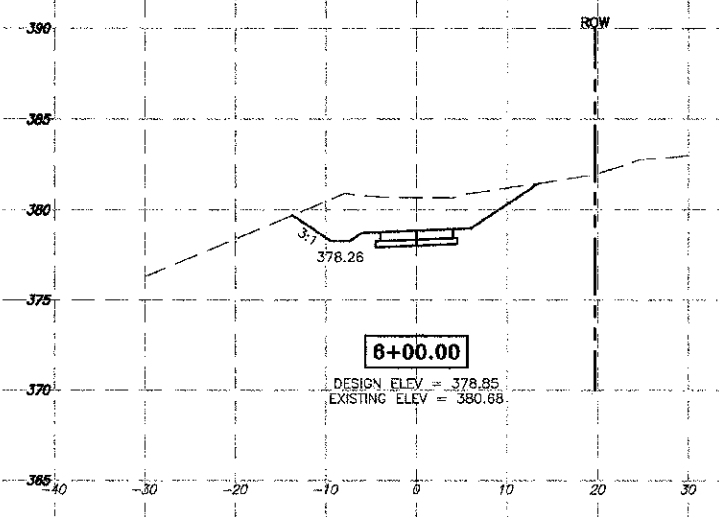
ILLINOIS BIKE PATH
CONTRACT NO. B9482



VIENNA BICYCLE/PEDESTRIAN PATH - CROSS-SECTIONS - STA 3+20.45 TO 5+41.16

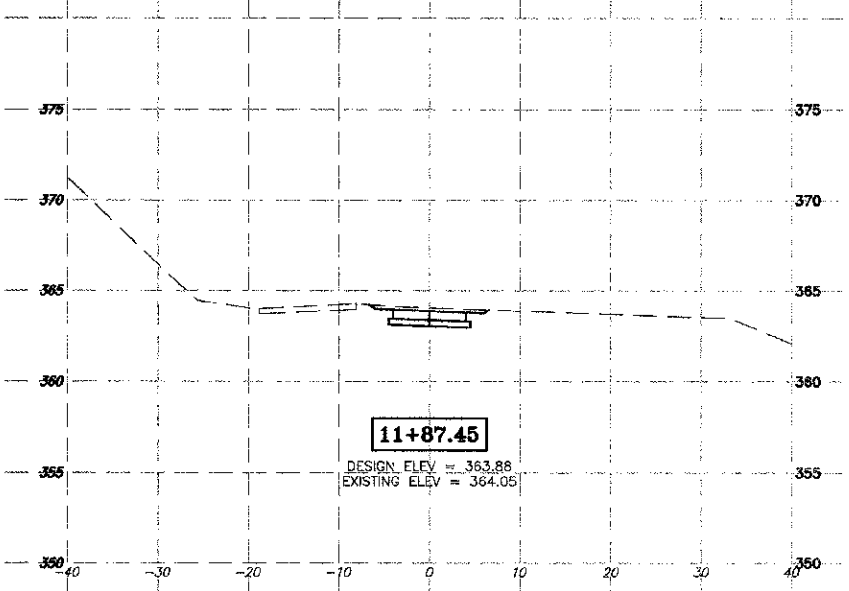
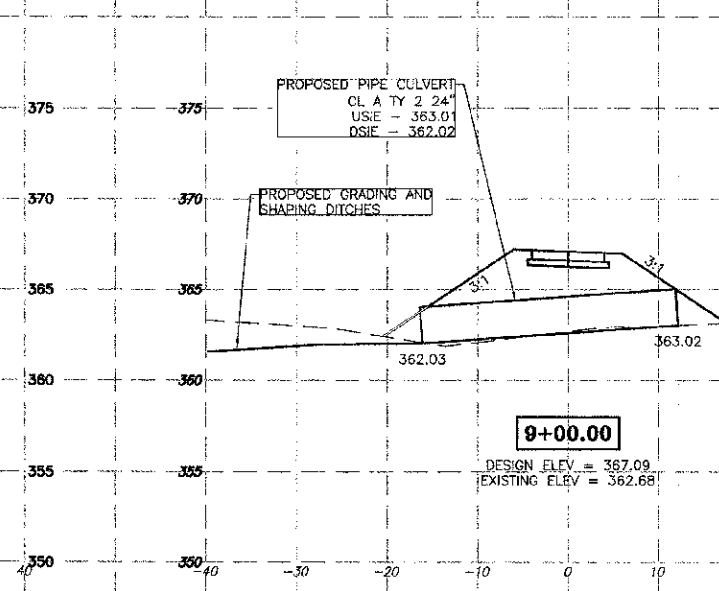
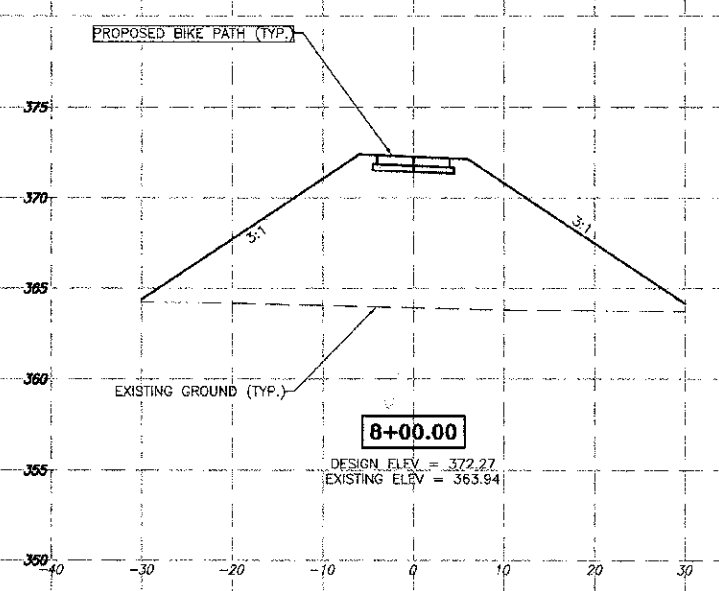
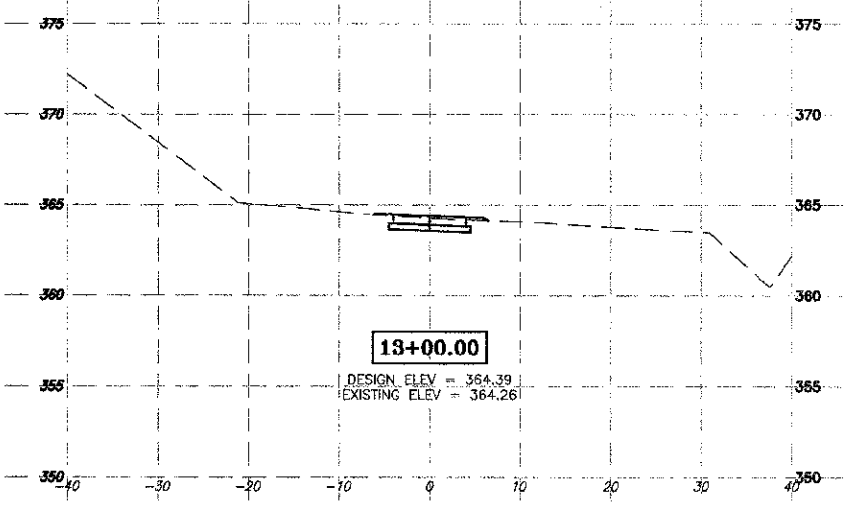
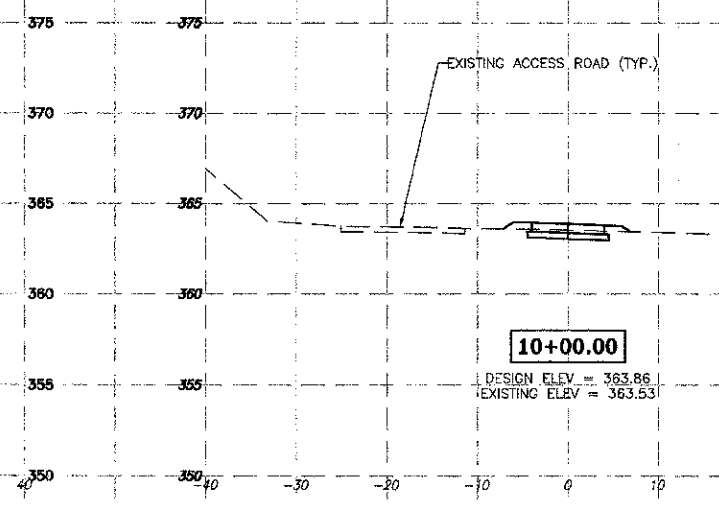
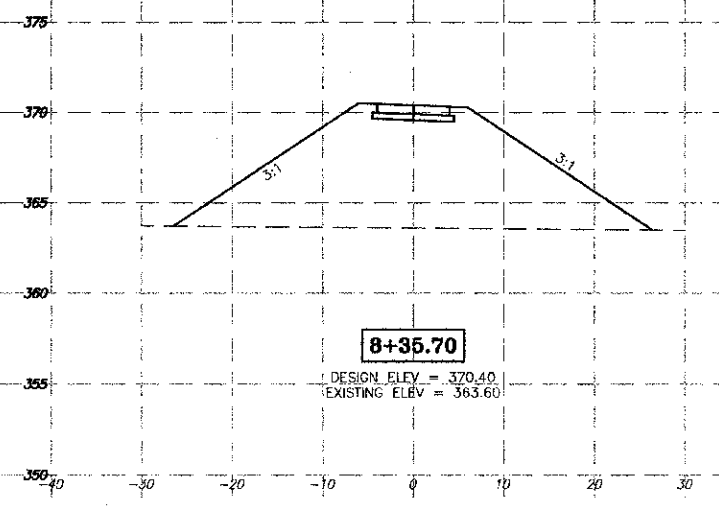
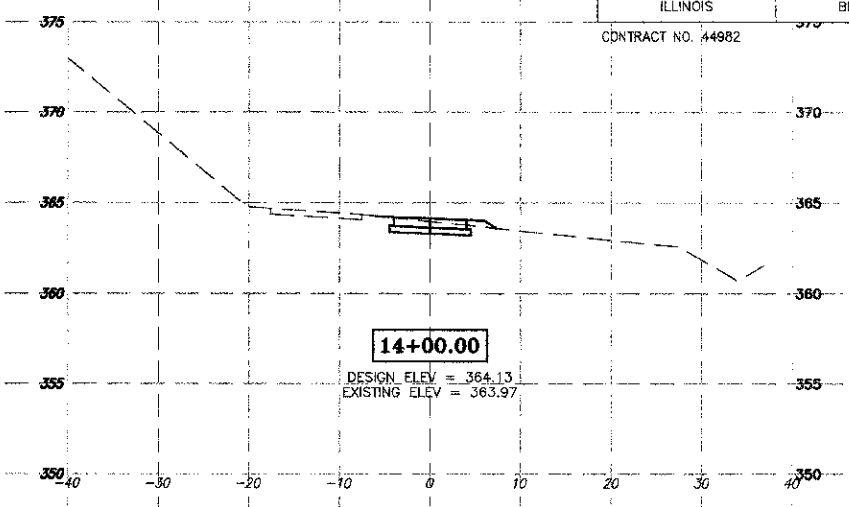
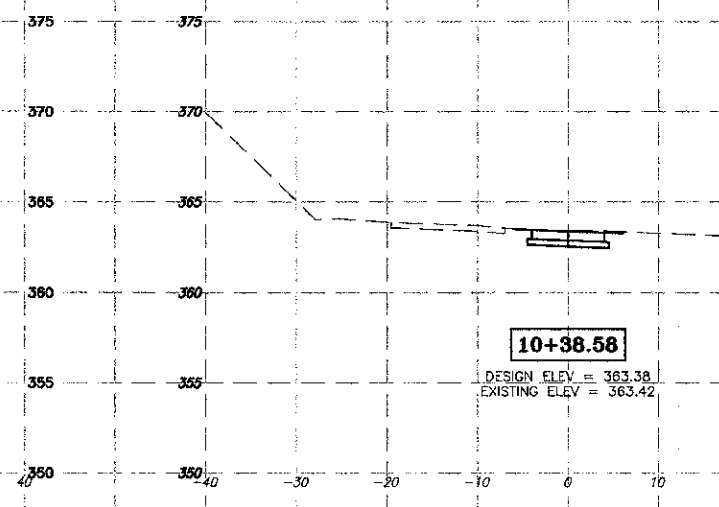
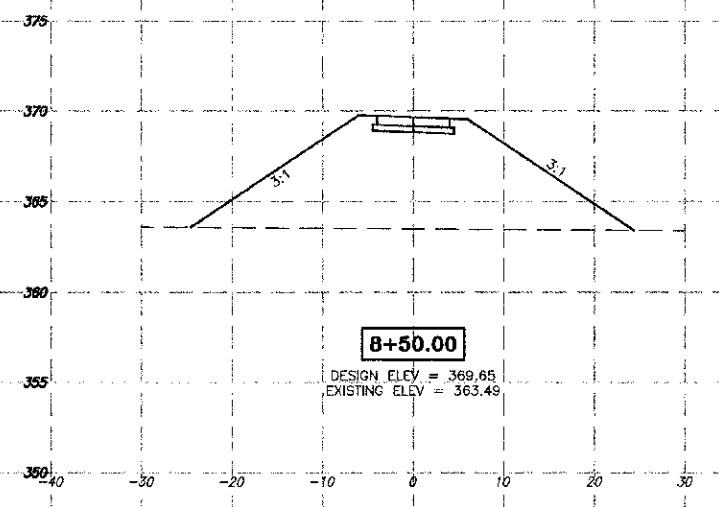
ROUTE NO.	SECTION	COUNTY	TOTAL SHEETS	SHEET NO.
F.A.U. 45	10-00014-00-BT	JOHNSON	13	09
ILL-NOIS		BIKE PATH		

CONTRACT NO. 99482

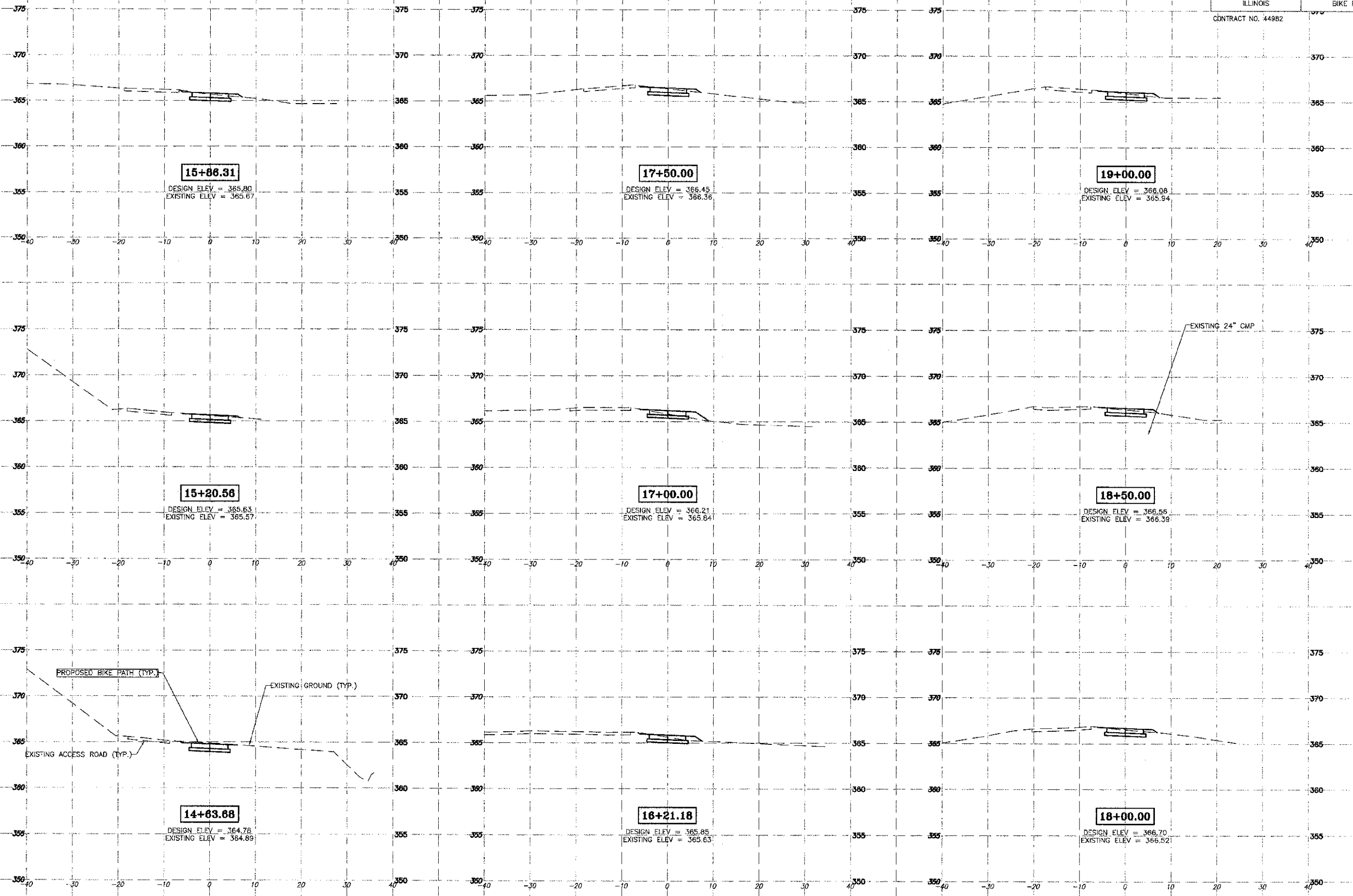


VIENNA BICYCLE/PEDESTRIAN PATH - CROSS-SECTIONS - STA 5+74.11 TO 7+72.42

ROUTE NO.	SECTION	COUNTY	TOTAL SHEETS	SHEET NO.
F.A.U. 45	10-00014-00-B7	JOHNSON	13	10
ILLINOIS		BIKE PATH		
CONTRACT NO. 44982				



ROUTE NO.	SECTION	COUNTY	TOTAL SHEETS	SHEET NO.
F.A.U. 45	10-00014-00-BT	JOHNSON	13	11
ILLINOIS		BIKE PATH		
CONTRACT NO. 44982				



15+06.31

DESIGN ELEV = 365.80
EXISTING ELEV = 365.67

17+50.00

DESIGN ELEV = 366.45
EXISTING ELEV = 366.36

19+00.00

DESIGN ELEV = 366.06
EXISTING ELEV = 365.94

15+20.56

DESIGN ELEV = 365.63
EXISTING ELEV = 365.57

17+00.00

DESIGN ELEV = 366.21
EXISTING ELEV = 365.64

18+50.00

DESIGN ELEV = 366.56
EXISTING ELEV = 366.39

14+63.68

DESIGN ELEV = 364.78
EXISTING ELEV = 364.89

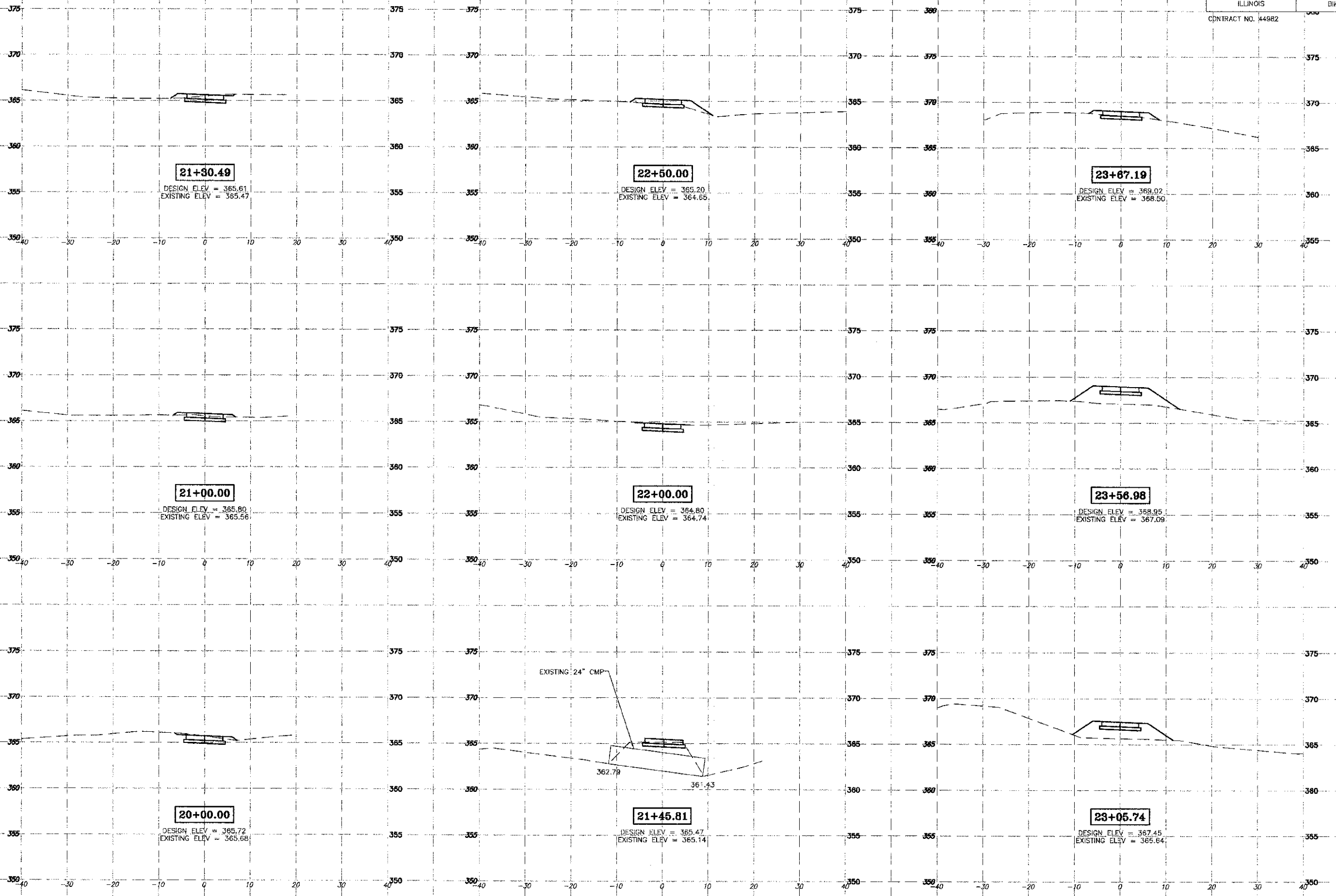
16+21.18

DESIGN ELEV = 365.85
EXISTING ELEV = 365.63

18+00.00

DESIGN ELEV = 366.70
EXISTING ELEV = 366.52

ROUTE NO.	SECTION	COUNTY	TOTAL SHEETS	SHEET NO.
F.A.U. 45	10-00014-00-BT	JOHNSON	13	12
ILLINOIS		BIKE PATH		
CONTRACT NO. 44982				



VIENNA BICYCLE/PEDESTRIAN PATH - CROSS-SECTIONS - STA 20+00 TO 23+67.19

