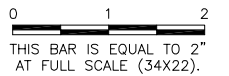


BL069

REVISIONS		
NUMBER	BY	DATE



SHEET LIST TABLE	
Sheet Number	Sheet Title
01	COVER SHEET
02	INDEX TO SHEETS & SUMMARY OF QUANTITIES
03	SITE PLAN
04	CONSTRUCTION ACTIVITY PLAN INDEX
05	CONSTRUCTION ACTIVITY PLAN 1
06	CONSTRUCTION ACTIVITY PLAN 2
07	CONSTRUCTION SAFETY PHASING PLAN NOTES
08	EXISTING CONDITIONS AND REMOVALS
09	EXISTING PAVEMENT STRUCTURE
10	EXISTING PAVEMENT REPAIR PLAN
11	PROPOSED IMPROVEMENTS
12	PERIMETER ROAD PLAN AND PROFILE
13	EAST EDGE AND PERIMETER ROAD CULVERT PLAN AND PROFILE
14	SOUTH PAVED DITCH PLAN AND PROFILE
15	TYPICAL SECTIONS 1
16	TYPICAL SECTIONS 2
17	JOINTING PLAN 1
18	JOINTING PLAN 2
19	JOINTING DETAILS
20	STAKING PLAN
21	PAVING DETAILS 1
22	NOSE TETHER DETAIL
23	SITE GRADING
24	DRAINAGE IMPROVEMENTS
25	DRAINAGE DETAILS 1
26	DRAINAGE DETAILS 2
27	UNDERDRAIN DETAILS
28	MARKING PLAN
29	MARKING DETAILS
30	ROADWAY SIGNAGE DETAILS
31	TAXIWAY LIGHTING PLAN
32	ELECTRICAL DETAILS 1
33	ELECTRICAL DETAILS 2
34	ELECTRICAL DETAILS 3
35	APRON LIGHTING PLAN
36	APRON LIGHTING DETAILS
37	ELECTRIC GATE DETAILS 1
38	ELECTRIC GATE DETAILS 2
39	FENCE DETAILS 1
40	FENCE DETAILS 2
41	INDEX TO CROSS SECTIONS & EROSION CONTROL
42	EROSION CONTROL DETAILS
43	EARTHWORK SUMMARY
44	EAST APRON CROSS SECTION SHEET 1
45	EAST APRON CROSS SECTION SHEET 2
46	EAST APRON CROSS SECTION SHEET 3
47	SOUTH APRON CROSS SECTION SHEET 1
48	SOUTH APRON CROSS SECTION SHEET 2
49	SOUTH APRON CROSS SECTION SHEET 3
50	SOUTH APRON CROSS SECTION SHEET 4
51	SOUTH APRON CROSS SECTION SHEET 5
52	PERIMETER ROAD CROSS SECTION SHEET 1
53	PERIMETER ROAD CROSS SECTION SHEET 2
54	PERIMETER ROAD CROSS SECTION SHEET 3
55	PAVED DITCH CROSS SECTION SHEET 1

SUMMARY OF QUANTITIES			
ITEM NO.	Description	UNIT	QUANTITY
AR106502	APRON LIGHT POLE W/DOUBLE FIXTURE	EA	2
AR106905	REMOVE LIGHT POLE & FIXTURE	EA	1
AR108000	CABLE TRENCH	LF	212
AR108052	POWER CABLE IN CONDUIT	LF	400
AR108108	1/C #8 5 KV UG CABLE	LF	1,650
AR110011	1" DIRECTIONAL BORE	LF	350
AR110504	4-WAY CONCRETE ENCASED DUCT	LF	45
AR110610	ELECTRICAL HANDHOLE	EA	1
AR800312	2" HDPE, DIRECT BURY	LF	780
AR125415	MITL - BASE MOUNTED	EA	9
AR125417	MITL - BASE MOUNTED IN SHOULDER	EA	4
AR125565	SPLICE CAN	EA	2
AR125902	REMOVE BASE MOUNTED LIGHT	EA	17
AR150510	ENGINEER'S FIELD OFFICE	LS	1
AR152410	UNCLASSIFIED EXCAVATION	CY	7,200
AR156500	TEMPORARY EROSION CONTROL	LS	1
AR162510	CLASS E FENCE 10'	LF	155
AR162900	REMOVE CLASS E FENCE	LF	137
AR162964	RELOCATE GATE	EA	1
AR162969	RELOCATE GATE OPERATOR	EA	1
AR209606	CRUSHED AGG. BASE COURSE - 6"	SY	10,330
AR401900	REMOVE BITUMINOUS PAVEMENT	SY	875
AR501509	9" PCC PAVEMENT	SY	2,315
AR501515	15" PCC PAVEMENT	SY	8,005
AR501530	PCC TEST BATCH	EA	1
AR501900	REMOVE PCC PAVEMENT	SY	2,455
AR510520	NOSE TETHER	EA	2
AR605540	CLEAN & SEAL JOINTS	LF	21,000
AR605541	CLEAN & SEAL CRACKS	LF	500
AR620520	PAVEMENT MARKING-WATERBORNE	SF	3,000
AR620525	PAVEMENT MARKING-BLACK BORDER	SF	3,000
AR620595	TEMPORARY MARKING & REMOVAL	SF	1,000
AR620900	PAVEMENT MARKING REMOVAL	SF	2,500
AR701524	24" RCP, CLASS IV	LF	150
AR701900	REMOVE PIPE	LF	170
AR705524	4" PERFORATED UNDERDRAIN W/SOCK	LF	1,300
AR705615	UNDERDRAIN OUTFALL	EA	1
AR705635	UNDERDRAIN COLLECTION STRUCTURE	EA	2
AR705640	UNDERDRAIN CLEANOUT	EA	2
AR705645	UNDERDRAIN CONNECTION	EA	6
AR705900	REMOVE UNDERDRAIN	LF	910
AR705904	REMOVE UNDERDRAIN CLEANOUT	EA	2
AR705905	REMOVE COLLECTION STRUCTURE	EA	2
AR752424	PRECAST REINFORCED CONC. FES 24"	EA	4
AR752900	REMOVE END SECTION	EA	4
AR754610	PAVED DITCH	LF	750
AR754910	REMOVE PAVED DITCH	LF	130
AR901510	SEEDING	AC	5
AR904510	SODDING	SY	850
AR908510	MULCHING	AC	5
AR908520	EXCELSIOR BLANKET	SY	500
AR908525	KNITTED STRAW MAT	SY	1,505
AR910200	ROADWAY SIGN	EA	3
AR910915	REMOVE ROADWAY SIGN	EA	2

BLOOMINGTON-NORMAL AIRPORT AUTHORITY
CENTRAL ILLINOIS REGIONAL AIRPORT
BLOOMINGTON, ILLINOIS

EXPAND AIR CARGO APRON
INDEX TO SHEETS & SUMMARY OF
QUANTITIES


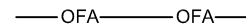



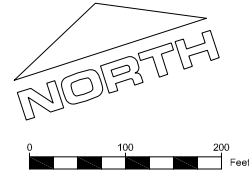
DESIGN BY:	CBG
DRAWN BY:	CMT
CHECKED BY:	RLV
APPROVED BY:	RLV
DATE:	MARCH 19, 2013
JOB No:	12085-05-00
IL PROJ. NO.	BMI-4288
AIP PROJ. NO.	3-17-0006-XX
SHEET 02A OF	55 SHEETS

GENERAL PHASING NOTES

- PROJECT WILL BE SPLIT INTO 2 PHASES WITH PHASE 2 HAVING 2 SUB-PARTS.
- PHASE 1 SHALL BE CONSIDERED THE PRIORITY WORK AREA AS IT WILL REQUIRE THE AIRPORT TO REROUTE FUEL TRUCKS AROUND THE WORK AREA. THE CONTRACTOR WILL HAVE 60 DAYS TO COMPLETE PHASE 1.
- PHASE 2 SHALL BE CONSIDERED A SECONDARY WORK AREA. CONSTRUCTION ACTIVITIES WITHIN PHASE 2A MAY BE CONSTRUCTED CONCURRENT WITH PHASE 1.
- PHASE 2B SHALL NOT BE CONSTRUCTED CONCURRENT WITH PHASE 1.
- CONSTRUCTION ACTIVITIES WILL BE PHASED TO LIMIT INTERRUPTING ACCESS TO AND FROM THE GROWMARK HANGAR.
- ALL CONSTRUCTION ACTIVITIES WILL REMAIN OUTSIDE OF THE TAXIWAY E SAFETY AREA SHOWN.
- THE CONTRACTOR SHALL PROVIDE BADGED PERSONNEL TO ACT AS A GATE GUARD ON DAYS WHEN DELIVERY TRUCKS ARE IN USE.
- THE TOPSOIL SHALL BE STRIPPED AND STOCKPILED TO COVER THE EXCESS EXCAVATION STOCKPILE AFTER PLACING. CUT STOCKPILE SHALL BE COMPACTED IN ACCORDANCE WITH ITEM 152.

LEGEND

-  PROPOSED IMPROVEMENTS
-  OBJECT FREE AREA
-  CONTRACTOR ACCESS



CRITICAL POINT TABLE			
POINT	LATITUDE	LONGITUDE	ELEVATION
1	N40° 28' 57.66"	W88° 55' 15.79"	858.20
2	N40° 28' 54.91"	W88° 55' 16.95"	861.13
3	N40° 28' 53.95"	W88° 55' 13.05"	863.55
4	N40° 28' 53.79"	W88° 55' 12.43"	863.64
5	N40° 28' 53.64"	W88° 55' 11.81"	863.59
6	N40° 28' 51.54"	W88° 55' 03.30"	865.00
7	N40° 28' 54.83"	W88° 55' 01.90"	861.00
8	N40° 28' 57.90"	W88° 55' 18.56"	858.20
9	N40° 28' 58.36"	W88° 55' 17.37"	858.20
10	N40° 28' 59.48"	W88° 55' 19.59"	858.20
11	N40° 28' 59.94"	W88° 55' 18.40"	858.20
12	N40° 29' 00.53"	W88° 55' 22.64"	861.00
13	N40° 29' 00.17"	W88° 55' 21.19"	861.00


FILE: 1208505-GC004 ADND.dwg
 UPDATE BY: Chris Groth
 PLOT DATE: 4/22/2013 1:35 PM

1208505-C-SPAL
 1208505-V-VF3D
 BMI-V-AERL
 BMI-V-SPXP

BL069

REVISIONS

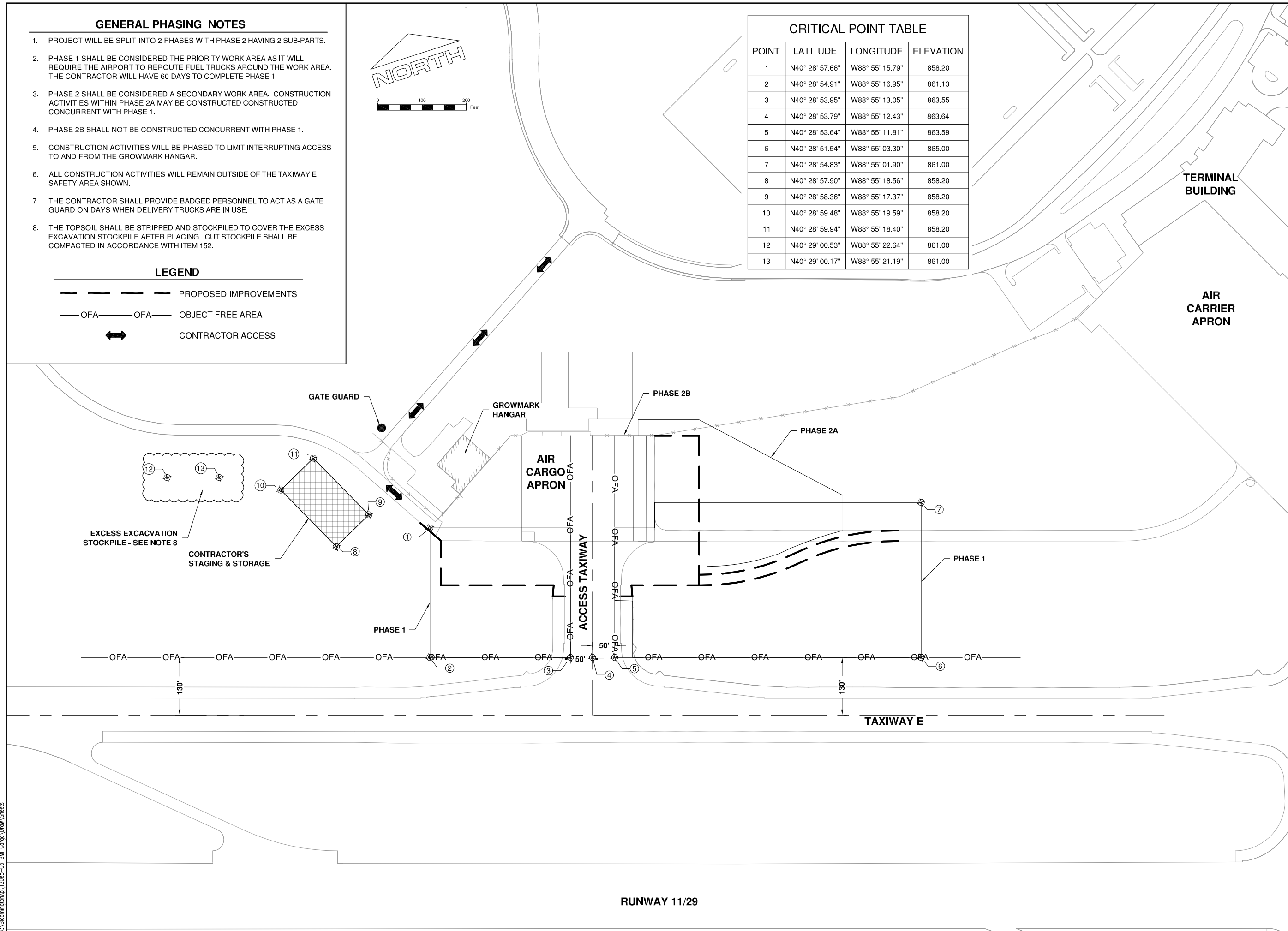
NUMBER	BY	DATE


 THIS BAR IS EQUAL TO 2"
 AT FULL SCALE (34X22).

BLOOMINGTON-NORMAL AIRPORT AUTHORITY
 CENTRAL ILLINOIS REGIONAL AIRPORT
 BLOOMINGTON, ILLINOIS
 EXPAND AIR CARGO APRON
 CONSTRUCTION ACTIVITY PLAN INDEX

© Copyright CMT, Inc.
CMT
 CRAWFORD, MURPHY & TILLY, INC.
 CONSULTING ENGINEERS
 License No. 184-000613

DESIGN BY: CBG
 DRAWN BY: CMT
 CHECKED BY: RLV
 APPROVED BY: RLV
 DATE: MARCH 19, 2013
 JOB No: 12085-05-00
 IL PROJ. NO. BMI-4288
 AIP PROJ. NO. 3-17-0006-XX
 SHEET 04A OF 55 SHEETS

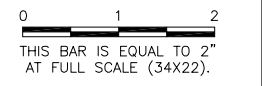


K:\Bloomington\12085-05_BMI_Corp\Draw\Sheets

BL069

REVISIONS

NUMBER	BY	DATE



**BLOOMINGTON-NORMAL AIRPORT AUTHORITY
 CENTRAL ILLINOIS REGIONAL AIRPORT
 BLOOMINGTON, ILLINOIS**

**EXPAND AIR CARGO APRON
 EXISTING CONDITIONS AND REMOVALS**

© Copyright CMT, Inc.
CMT
 CRAWFORD, MURPHY & TILLY, INC.
 CONSULTING ENGINEERS
 License No. 184-000613

DESIGN BY:	CBG
DRAWN BY:	CMT
CHECKED BY:	RLV
APPROVED BY:	RLV
DATE:	MARCH 19, 2013
JOB No:	12085-05-00
IL PROJ. NO.	BMI-4288
AIP PROJ. NO.	3-17-0006-XX
SHEET	08A OF 55 SHEETS

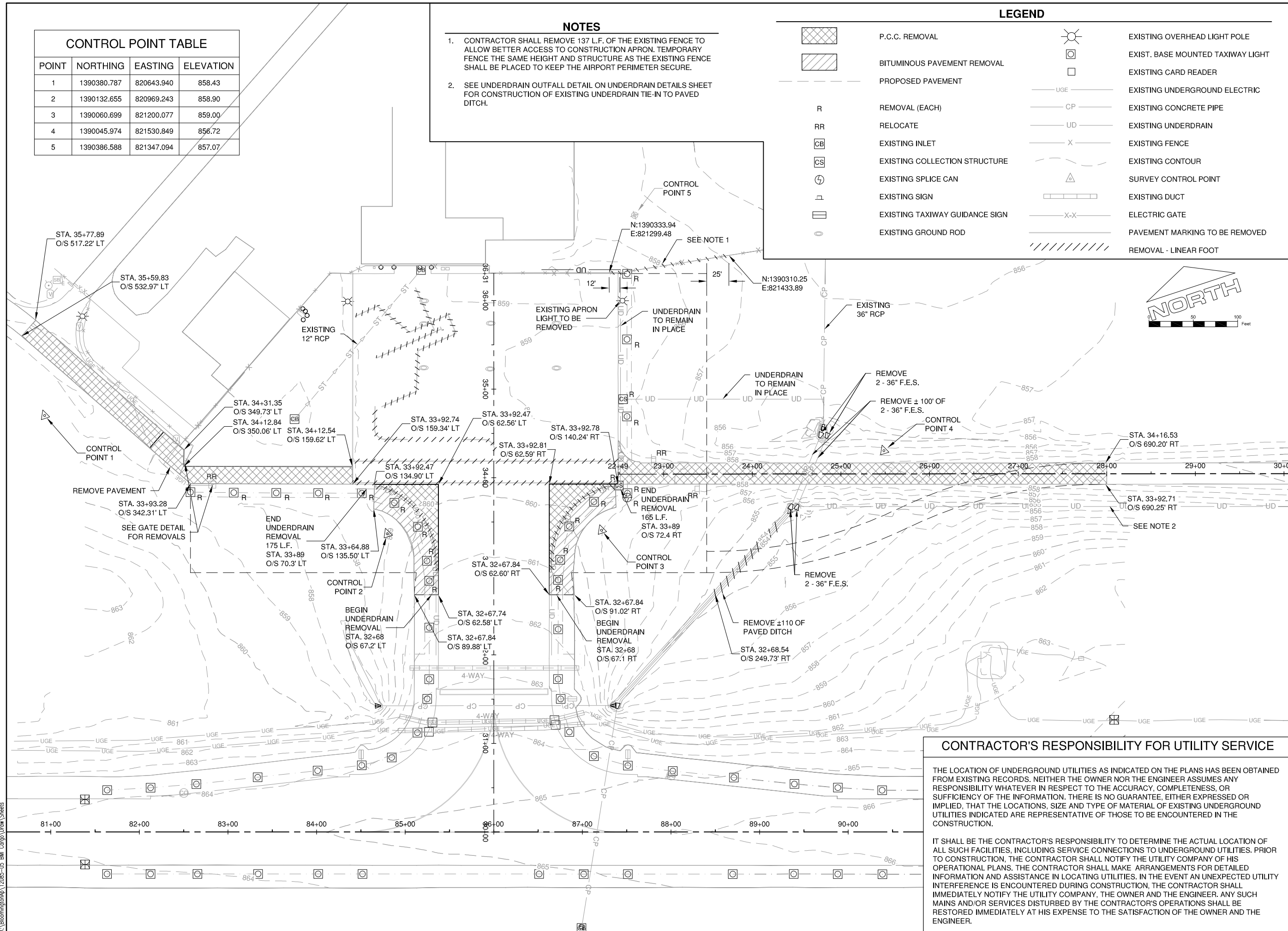
CONTROL POINT TABLE

POINT	NORTHING	EASTING	ELEVATION
1	1390380.787	820643.940	858.43
2	1390132.655	820969.243	858.90
3	1390060.699	821200.077	859.00
4	1390045.974	821530.849	856.72
5	1390386.588	821347.094	857.07

- NOTES**
- CONTRACTOR SHALL REMOVE 137 L.F. OF THE EXISTING FENCE TO ALLOW BETTER ACCESS TO CONSTRUCTION APRON. TEMPORARY FENCE THE SAME HEIGHT AND STRUCTURE AS THE EXISTING FENCE SHALL BE PLACED TO KEEP THE AIRPORT PERIMETER SECURE.
 - SEE UNDERDRAIN OUTFALL DETAIL ON UNDERDRAIN DETAILS SHEET FOR CONSTRUCTION OF EXISTING UNDERDRAIN TIE-IN TO PAVED DITCH.

LEGEND

	P.C.C. REMOVAL		EXISTING OVERHEAD LIGHT POLE
	BITUMINOUS PAVEMENT REMOVAL		EXIST. BASE MOUNTED TAXIWAY LIGHT
	PROPOSED PAVEMENT		EXISTING CARD READER
R	REMOVAL (EACH)		EXISTING UNDERGROUND ELECTRIC
RR	RELOCATE		EXISTING CONCRETE PIPE
	EXISTING INLET		EXISTING UNDERDRAIN
	EXISTING COLLECTION STRUCTURE		EXISTING FENCE
	EXISTING SPLICE CAN		EXISTING CONTOUR
	EXISTING SIGN		SURVEY CONTROL POINT
	EXISTING TAXIWAY GUIDANCE SIGN		EXISTING DUCT
	EXISTING GROUND ROD		ELECTRIC GATE
			PAVEMENT MARKING TO BE REMOVED
			REMOVAL - LINEAR FOOT



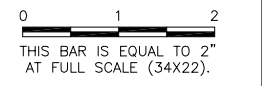
CONTRACTOR'S RESPONSIBILITY FOR UTILITY SERVICE

THE LOCATION OF UNDERGROUND UTILITIES AS INDICATED ON THE PLANS HAS BEEN OBTAINED FROM EXISTING RECORDS. NEITHER THE OWNER NOR THE ENGINEER ASSUMES ANY RESPONSIBILITY WHATEVER IN RESPECT TO THE ACCURACY, COMPLETENESS, OR SUFFICIENCY OF THE INFORMATION. THERE IS NO GUARANTEE, EITHER EXPRESSED OR IMPLIED, THAT THE LOCATIONS, SIZE AND TYPE OF MATERIAL OF EXISTING UNDERGROUND UTILITIES INDICATED ARE REPRESENTATIVE OF THOSE TO BE ENCOUNTERED IN THE CONSTRUCTION.

IT SHALL BE THE CONTRACTOR'S RESPONSIBILITY TO DETERMINE THE ACTUAL LOCATION OF ALL SUCH FACILITIES, INCLUDING SERVICE CONNECTIONS TO UNDERGROUND UTILITIES. PRIOR TO CONSTRUCTION, THE CONTRACTOR SHALL NOTIFY THE UTILITY COMPANY OF HIS OPERATIONAL PLANS. THE CONTRACTOR SHALL MAKE ARRANGEMENTS FOR DETAILED INFORMATION AND ASSISTANCE IN LOCATING UTILITIES. IN THE EVENT AN UNEXPECTED UTILITY INTERFERENCE IS ENCOUNTERED DURING CONSTRUCTION, THE CONTRACTOR SHALL IMMEDIATELY NOTIFY THE UTILITY COMPANY, THE OWNER AND THE ENGINEER. ANY SUCH MAINS AND/OR SERVICES DISTURBED BY THE CONTRACTOR'S OPERATIONS SHALL BE RESTORED IMMEDIATELY AT HIS EXPENSE TO THE SATISFACTION OF THE OWNER AND THE ENGINEER.

BL069

REVISIONS		
NUMBER	BY	DATE



BLOOMINGTON-NORMAL AIRPORT AUTHORITY
CENTRAL ILLINOIS REGIONAL AIRPORT
BLOOMINGTON, ILLINOIS
EXPAND AIR CARGO APRON
EXISTING PAVEMENT REPAIR PLAN

© Copyright CMT, Inc.
CMT
 CRAWFORD, MURPHY & TILLY, INC.
 CONSULTING ENGINEERS
 License No. 184-000613

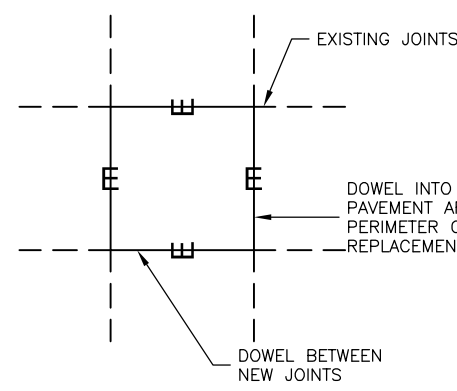
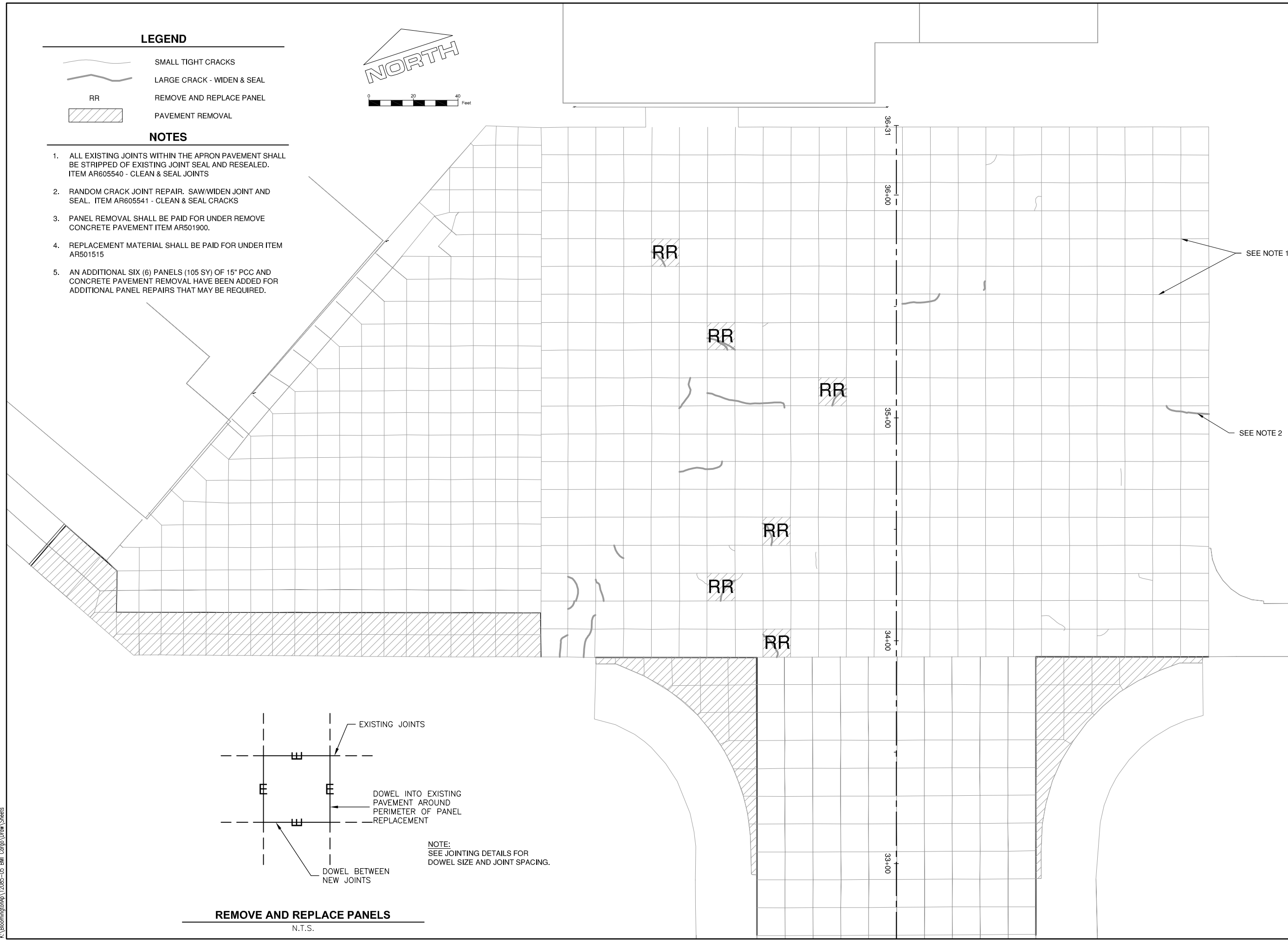
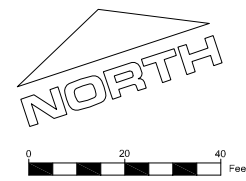
DESIGN BY:	CBG
DRAWN BY:	CMT
CHECKED BY:	RLV
APPROVED BY:	RLV
DATE:	MARCH 19, 2013
JOB No:	12085-05-00
IL. PROJ. NO. BMI-4288	
AIP PROJ. NO. 3-17-0006-XX	
SHEET 10A OF 55 SHEETS	

LEGEND

- SMALL TIGHT CRACKS
- LARGE CRACK - WIDEN & SEAL
- RR** REMOVE AND REPLACE PANEL
- PAVEMENT REMOVAL

NOTES

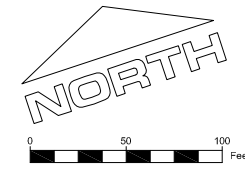
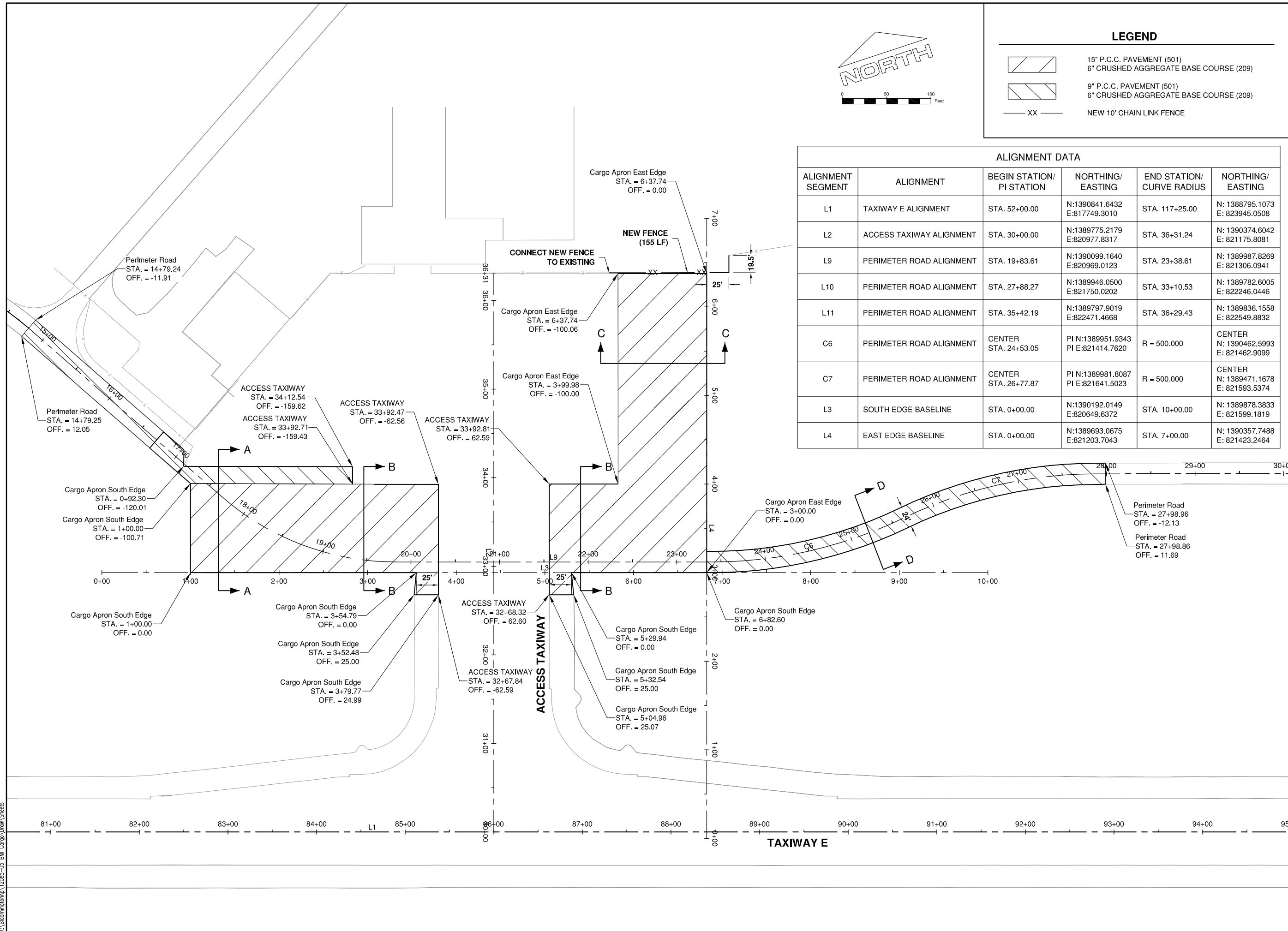
1. ALL EXISTING JOINTS WITHIN THE APRON PAVEMENT SHALL BE STRIPPED OF EXISTING JOINT SEAL AND RESEALED. ITEM AR605540 - CLEAN & SEAL JOINTS
2. RANDOM CRACK JOINT REPAIR. SAW/WIDEN JOINT AND SEAL. ITEM AR605541 - CLEAN & SEAL CRACKS
3. PANEL REMOVAL SHALL BE PAID FOR UNDER REMOVE CONCRETE PAVEMENT ITEM AR501900.
4. REPLACEMENT MATERIAL SHALL BE PAID FOR UNDER ITEM AR501515
5. AN ADDITIONAL SIX (6) PANELS (105 SY) OF 15" PCC AND CONCRETE PAVEMENT REMOVAL HAVE BEEN ADDED FOR ADDITIONAL PANEL REPAIRS THAT MAY BE REQUIRED.



NOTE:
 SEE JOINTING DETAILS FOR
 DOWEL SIZE AND JOINT SPACING.

REMOVE AND REPLACE PANELS
 N.T.S.

K:\Bloomington\12085-05_BMI Cargo\Drawn Sheets



LEGEND

	15" P.C.C. PAVEMENT (501) 6" CRUSHED AGGREGATE BASE COURSE (209)
	9" P.C.C. PAVEMENT (501) 6" CRUSHED AGGREGATE BASE COURSE (209)
	NEW 10' CHAIN LINK FENCE

ALIGNMENT DATA

ALIGNMENT SEGMENT	ALIGNMENT	BEGIN STATION/ PI STATION	NORTHING/ EASTING	END STATION/ CURVE RADIUS	NORTHING/ EASTING
L1	TAXIWAY E ALIGNMENT	STA. 52+00.00	N:1390841.6432 E:817749.3010	STA. 117+25.00	N: 1388795.1073 E: 823945.0508
L2	ACCESS TAXIWAY ALIGNMENT	STA. 30+00.00	N:1389775.2179 E:820977.8317	STA. 36+31.24	N: 1390374.6042 E: 821175.8081
L9	PERIMETER ROAD ALIGNMENT	STA. 19+83.61	N:1390099.1640 E:820969.0123	STA. 23+38.61	N: 1389987.8269 E: 821306.0941
L10	PERIMETER ROAD ALIGNMENT	STA. 27+88.27	N:1389946.0500 E:821750.0202	STA. 33+10.53	N: 1389782.6005 E: 822246.0446
L11	PERIMETER ROAD ALIGNMENT	STA. 35+42.19	N:1389797.9019 E:822471.4668	STA. 36+29.43	N: 1389836.1558 E: 822549.8832
C6	PERIMETER ROAD ALIGNMENT	CENTER STA. 24+53.05	PI N:1389951.9343 PI E:821414.7620	R = 500.000	CENTER N: 1390462.5993 E: 821462.9099
C7	PERIMETER ROAD ALIGNMENT	CENTER STA. 26+77.87	PI N:1389981.8087 PI E:821641.5023	R = 500.000	CENTER N: 1389471.1678 E: 821593.5374
L3	SOUTH EDGE BASELINE	STA. 0+00.00	N:1390192.0149 E:820649.6372	STA. 10+00.00	N: 1389878.3833 E: 821599.1819
L4	EAST EDGE BASELINE	STA. 0+00.00	N:1389693.0675 E:821203.7043	STA. 7+00.00	N: 1390357.7488 E: 821423.2464

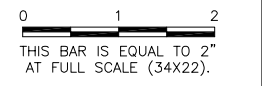
FILE: 1208505-CP101 ADND.dwg
 UPDATE BY: Chris Groth
 PLOT DATE: 4/22/2013 2:25 PM

1208505-C-SPAL
 BMI-V-AERL
 BMI-V-SPXP

BL069

REVISIONS

NUMBER	BY	DATE



**BLOOMINGTON-NORMAL AIRPORT AUTHORITY
 CENTRAL ILLINOIS REGIONAL AIRPORT
 BLOOMINGTON, ILLINOIS**

**EXPAND AIR CARGO APRON
 PROPOSED IMPROVEMENTS**

© Copyright CMT, Inc.

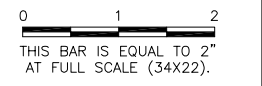
CMT
 CRAWFORD, MURPHY & TILLY, INC.
 CONSULTING ENGINEERS
 License No. 184-000613

DESIGN BY:	CBG
DRAWN BY:	CMT
CHECKED BY:	RLV
APPROVED BY:	RLV
DATE:	MARCH 19, 2013
JOB No:	12085-05-00
IL PROJ. NO.	BMI-4288
AIP PROJ. NO.	3-17-0006-XX
SHEET	11A OF 55 SHEETS

BL069

REVISIONS

NUMBER	BY	DATE

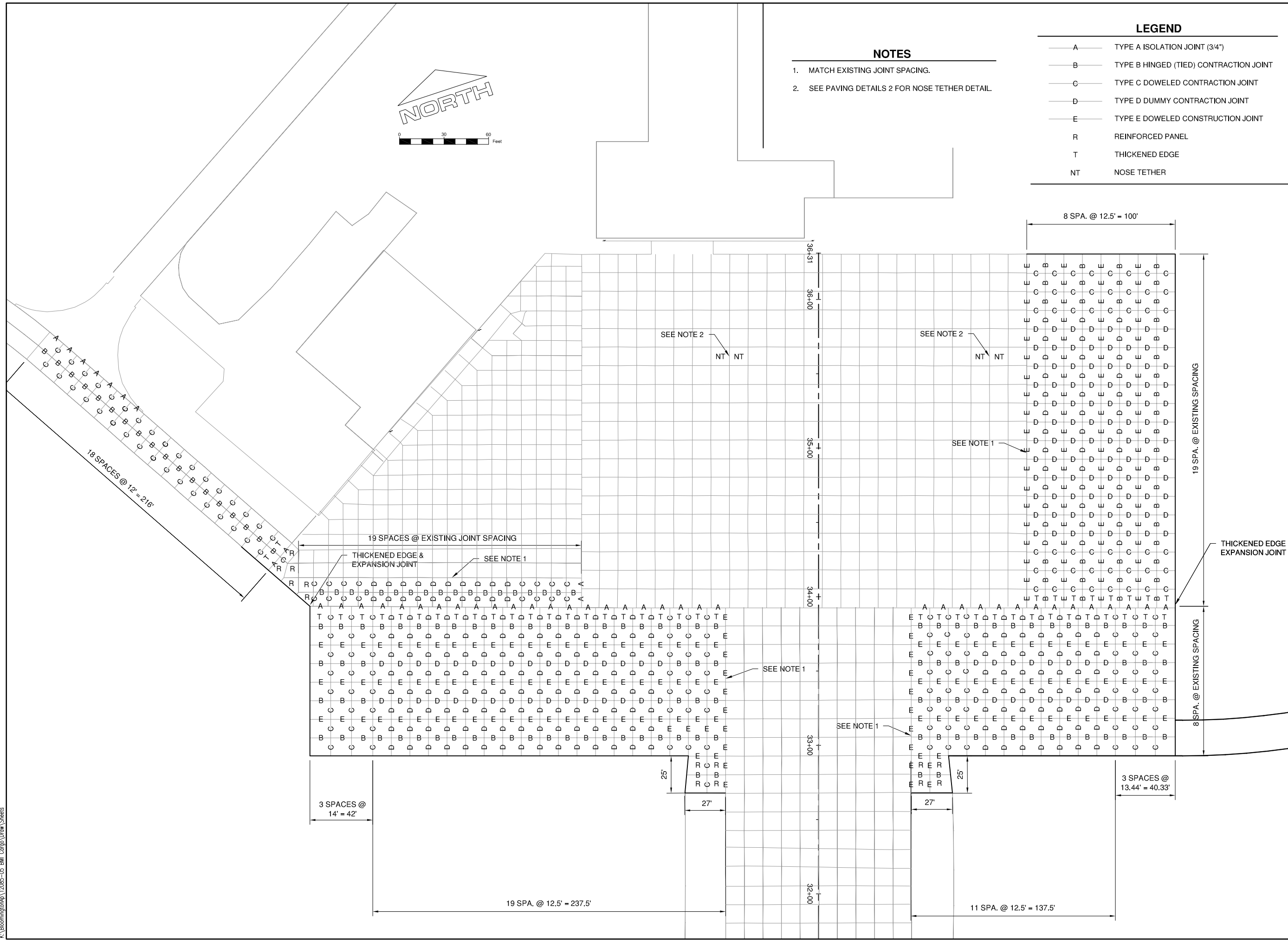
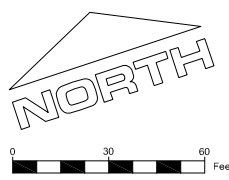


LEGEND

- A — TYPE A ISOLATION JOINT (3/4")
- B — TYPE B HINGED (TIED) CONTRACTION JOINT
- C — TYPE C DOWELED CONTRACTION JOINT
- D — TYPE D DUMMY CONTRACTION JOINT
- E — TYPE E DOWELED CONSTRUCTION JOINT
- R REINFORCED PANEL
- T THICKENED EDGE
- NT NOSE TETHER

NOTES

1. MATCH EXISTING JOINT SPACING.
2. SEE PAVING DETAILS 2 FOR NOSE TETHER DETAIL.



**BLOOMINGTON-NORMAL AIRPORT AUTHORITY
 CENTRAL ILLINOIS REGIONAL AIRPORT
 BLOOMINGTON, ILLINOIS**

**EXPAND AIR CARGO APRON
 JOINTING PLAN 1**

© Copyright CMT, Inc.
CMT
 CRAWFORD, MURPHY & TILLY, INC.
 CONSULTING ENGINEERS
 License No. 184-000613

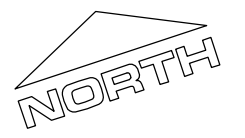
DESIGN BY:	CBG
DRAWN BY:	CMT
CHECKED BY:	RLV
APPROVED BY:	RLV
DATE:	MARCH 19, 2013
JOB No:	12085-05-00

IL PROJ. NO. BMI-4288
 AIP PROJ. NO. 3-17-0006-XX

K:\Bloomington\12085-05_BMI_Cargo\Draw\Sheets



MATCH EXISTING PAVEMENT WHERE GRADES NOT SHOWN



LEGEND

- PROPOSED ELEVATION
- EXISTING ELEVATION
- PROPOSED CONTOURS
- EXISTING CONTOURS

NOTES

1. SPOT ELEVATIONS ARE SHOWN AT JOINT INTERSECTIONS.

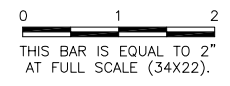
FILE: 1208505-CG101 ADND.dwg
 UPDATE BY: Chris Groth
 PLOT DATE: 4/22/2013 2:08 PM

1208505-C-SPAL
 1208505-V-VF3D
 BMI-V-AERL
 BMI-V-SPXP
 1208505-CP102
 1208505-CP103

BL069

REVISIONS

NUMBER	BY	DATE



**BLOOMINGTON-NORMAL AIRPORT AUTHORITY
 CENTRAL ILLINOIS REGIONAL AIRPORT
 BLOOMINGTON, ILLINOIS**

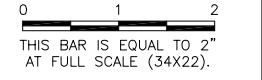
**EXPAND AIR CARGO APRON
 STAKING PLAN**

© Copyright CMT, Inc.
CMT
 CRAWFORD, MURPHY & TILLY, INC.
 CONSULTING ENGINEERS
 License No. 184-000613

DESIGN BY:	CBG
DRAWN BY:	CMT
CHECKED BY:	RLV
APPROVED BY:	RLV
DATE:	MARCH 19, 2013
JOB No:	12085-05-00
IL PROJ. NO.	BMI-4288
AIP PROJ. NO.	3-17-0006-XX
SHEET	20A OF 55 SHEETS

BL069

REVISIONS		
NUMBER	BY	DATE

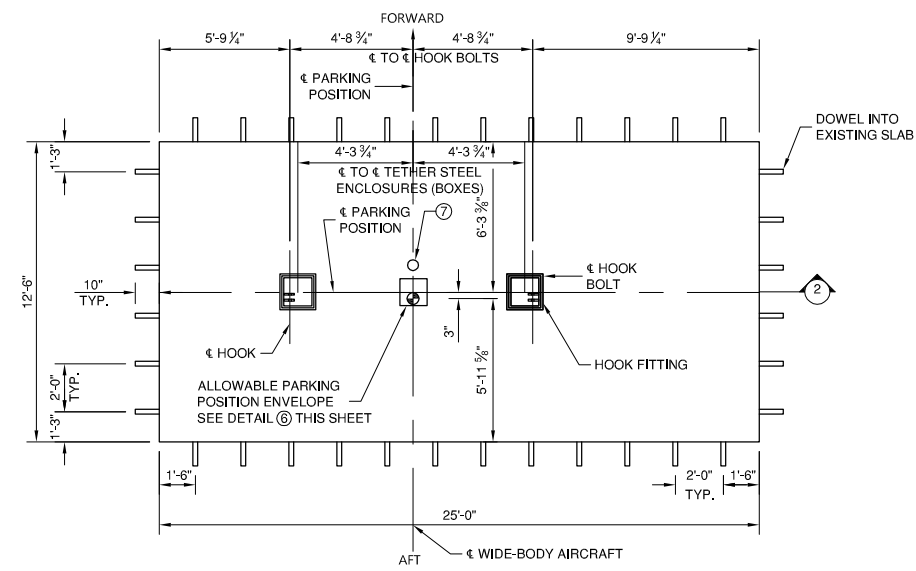


**BLOOMINGTON-NORMAL AIRPORT AUTHORITY
 CENTRAL ILLINOIS REGIONAL AIRPORT
 BLOOMINGTON, ILLINOIS**

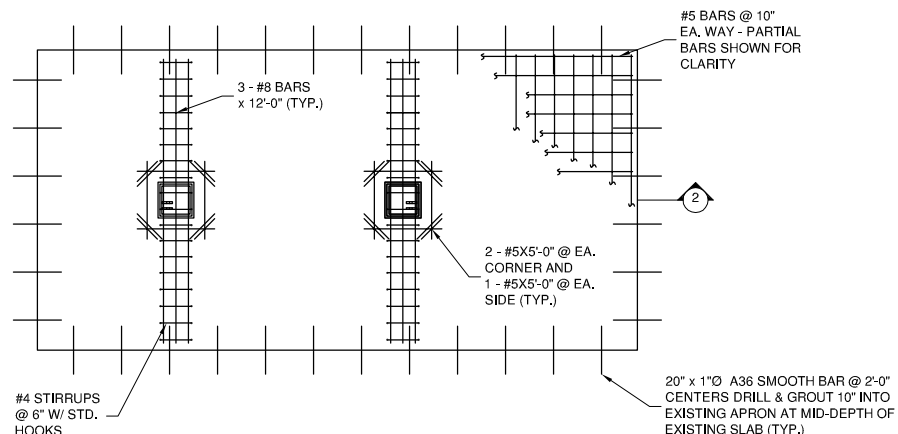
**EXPAND AIR CARGO APRON
 NOSE TETHER DETAIL**

© Copyright CMT, Inc.
CMT
 CRAWFORD, MURPHY & TILLY, INC.
 CONSULTING ENGINEERS
 License No. 184-000613

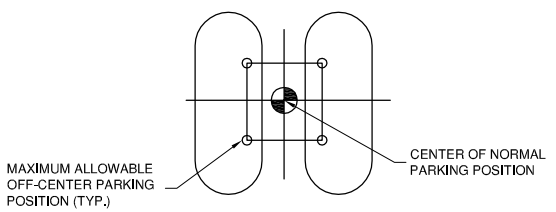
DESIGN BY:	CBG
DRAWN BY:	CMT
CHECKED BY:	JJF
APPROVED BY:	RLV
DATE:	MARCH 19, 2013
JOB No:	12085-05-00
IL PROJ. NO. BMI-4288 AIP PROJ. NO. 3-17-0006-XX	
SHEET 22A OF 55 SHEETS	



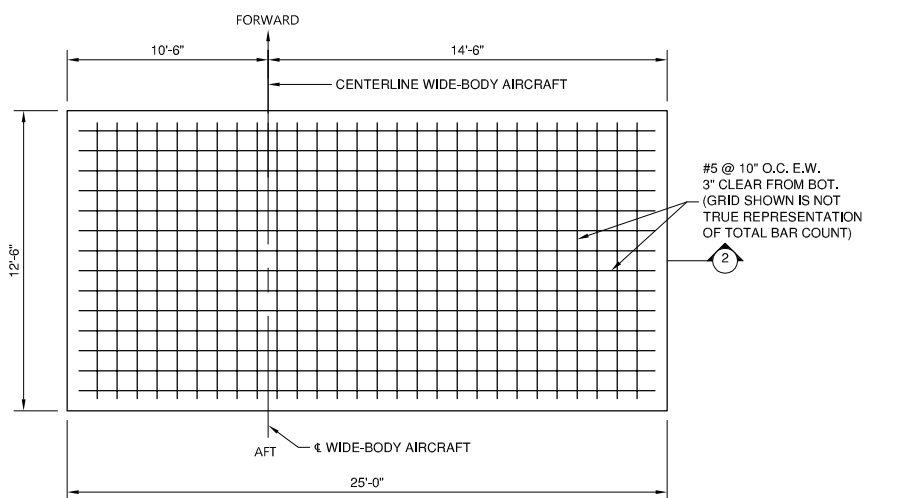
1 PLAN
N.T.S.



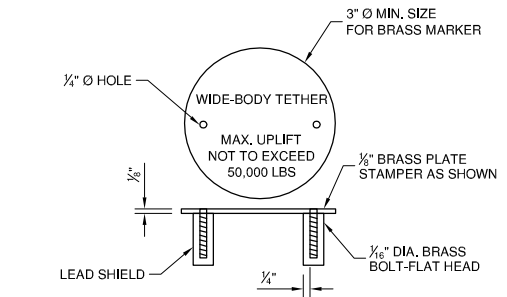
2 REINFORCING PLAN (HIGH)
N.T.S.



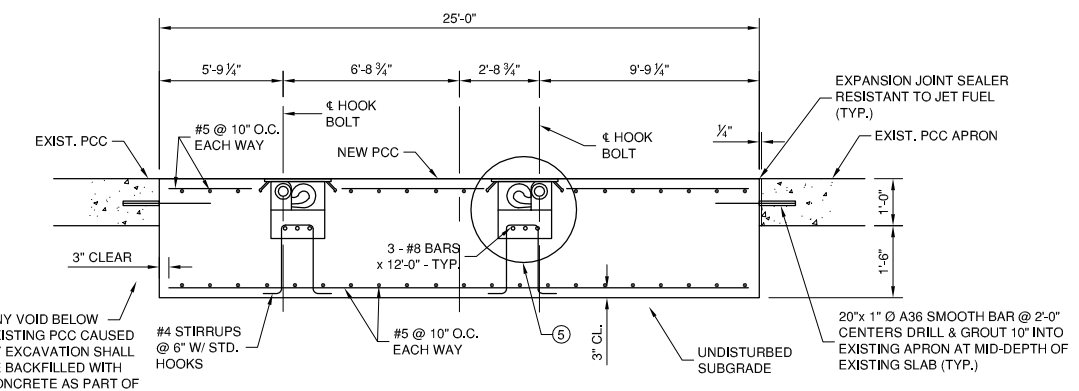
3 ALLOWABLE PARKING POSITION ENVELOPE
N.T.S.



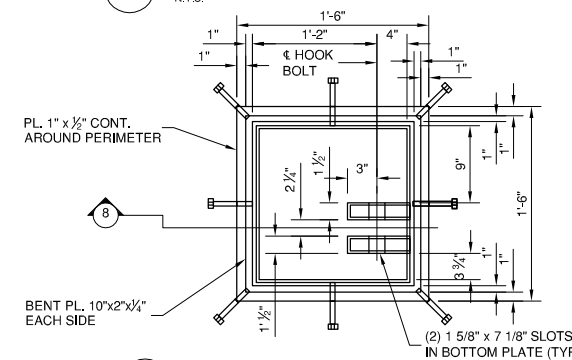
4 REINFORCING PLAN (LOW)
N.T.S.



5 LOAD PLATE DETAIL
N.T.S.

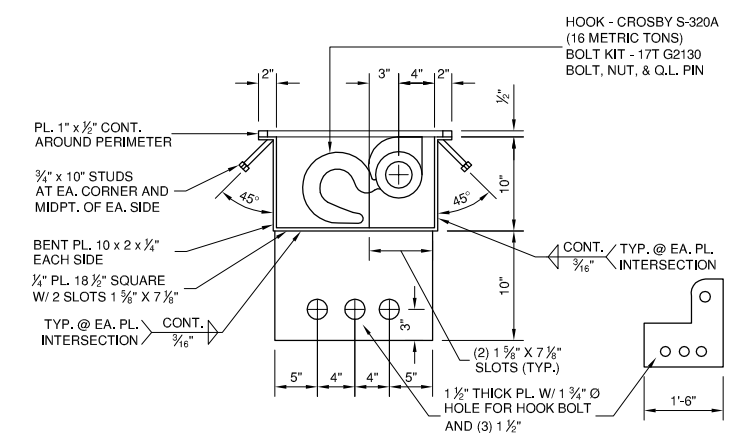


6 SECTION
N.T.S.

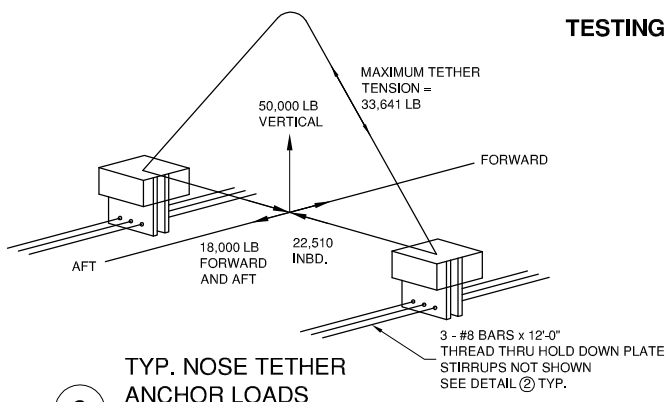


7 PLAN - TYP. HOOK FITTING
N.T.S.

- NOTES**
- ALL STEEL USED FOR THE MANUFACTURE OF THE NOSE TETHER BOX SHALL BE A36 U.N.O. UNLESS OTHERWISE NOTED.

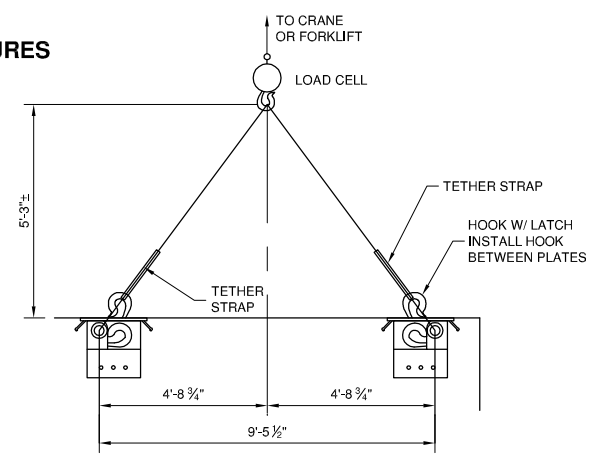


8 SECTION
N.T.S.



9 TYP. NOSE TETHER ANCHOR LOADS
N.T.S.

TESTING PROCEDURES

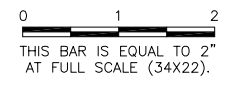


K:\Bloomington\12085-05_BMI Corp\Draw\Sheets

BL069

REVISIONS

NUMBER	BY	DATE



BLOOMINGTON-NORMAL AIRPORT AUTHORITY
CENTRAL ILLINOIS REGIONAL AIRPORT
BLOOMINGTON, ILLINOIS

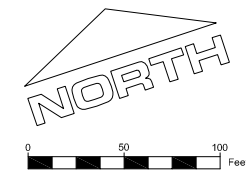
EXPAND AIR CARGO APRON
DRAINAGE IMPROVEMENTS

© Copyright CMT, Inc.

CMT
 CRAWFORD, MURPHY & TILLY, INC.
 CONSULTING ENGINEERS
 License No. 184-000613

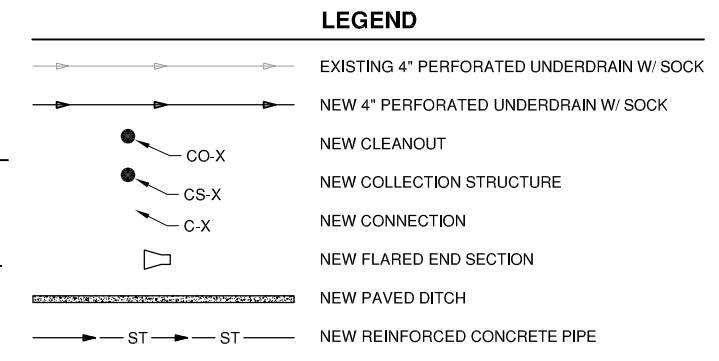


DESIGN BY:	CBG
DRAWN BY:	CMT
CHECKED BY:	RLV
APPROVED BY:	RLV
DATE:	MARCH 19, 2013
JOB No:	12085-05-00
IL PROJ. NO.	BMI-4288
AIP PROJ. NO.	3-17-0006-XX
SHEET	24A OF 55 SHEETS



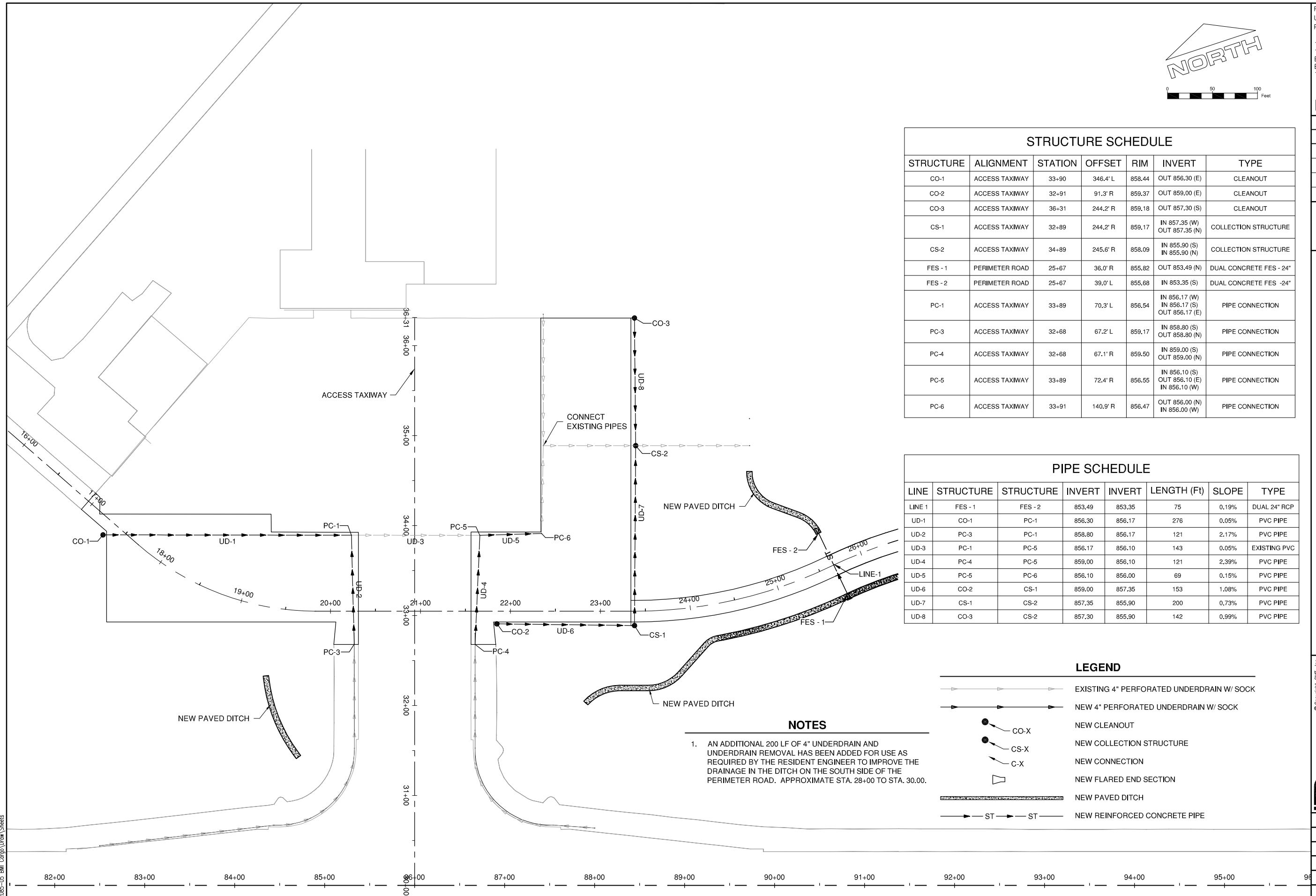
STRUCTURE SCHEDULE						
STRUCTURE	ALIGNMENT	STATION	OFFSET	RIM	INVERT	TYPE
CO-1	ACCESS TAXIWAY	33+90	346.4' L	858.44	OUT 856.30 (E)	CLEANOUT
CO-2	ACCESS TAXIWAY	32+91	91.3' R	859.37	OUT 859.00 (E)	CLEANOUT
CO-3	ACCESS TAXIWAY	36+31	244.2' R	859.18	OUT 857.30 (S)	CLEANOUT
CS-1	ACCESS TAXIWAY	32+89	244.2' R	859.17	IN 857.35 (W) OUT 857.35 (N)	COLLECTION STRUCTURE
CS-2	ACCESS TAXIWAY	34+89	245.6' R	858.09	IN 855.90 (S) IN 855.90 (N)	COLLECTION STRUCTURE
FES - 1	PERIMETER ROAD	25+67	36.0' R	855.82	OUT 853.49 (N)	DUAL CONCRETE FES - 24"
FES - 2	PERIMETER ROAD	25+67	39.0' L	855.68	IN 853.35 (S)	DUAL CONCRETE FES - 24"
PC-1	ACCESS TAXIWAY	33+89	70.3' L	856.54	IN 856.17 (W) IN 856.17 (S) OUT 856.17 (E)	PIPE CONNECTION
PC-3	ACCESS TAXIWAY	32+68	67.2' L	859.17	IN 858.80 (S) OUT 858.80 (N)	PIPE CONNECTION
PC-4	ACCESS TAXIWAY	32+68	67.1' R	859.50	IN 859.00 (S) OUT 859.00 (N)	PIPE CONNECTION
PC-5	ACCESS TAXIWAY	33+89	72.4' R	856.55	IN 856.10 (S) OUT 856.10 (E) IN 856.10 (W)	PIPE CONNECTION
PC-6	ACCESS TAXIWAY	33+91	140.9' R	856.47	OUT 856.00 (N) IN 856.00 (W)	PIPE CONNECTION

PIPE SCHEDULE							
LINE	STRUCTURE	STRUCTURE	INVERT	INVERT	LENGTH (Ft)	SLOPE	TYPE
LINE 1	FES - 1	FES - 2	853.49	853.35	75	0.19%	DUAL 24" RCP
UD-1	CO-1	PC-1	856.30	856.17	276	0.05%	PVC PIPE
UD-2	PC-3	PC-1	858.80	856.17	121	2.17%	PVC PIPE
UD-3	PC-1	PC-5	856.17	856.10	143	0.05%	EXISTING PVC
UD-4	PC-4	PC-5	859.00	856.10	121	2.39%	PVC PIPE
UD-5	PC-5	PC-6	856.10	856.00	69	0.15%	PVC PIPE
UD-6	CO-2	CS-1	859.00	857.35	153	1.08%	PVC PIPE
UD-7	CS-1	CS-2	857.35	855.90	200	0.73%	PVC PIPE
UD-8	CO-3	CS-2	857.30	855.90	142	0.99%	PVC PIPE



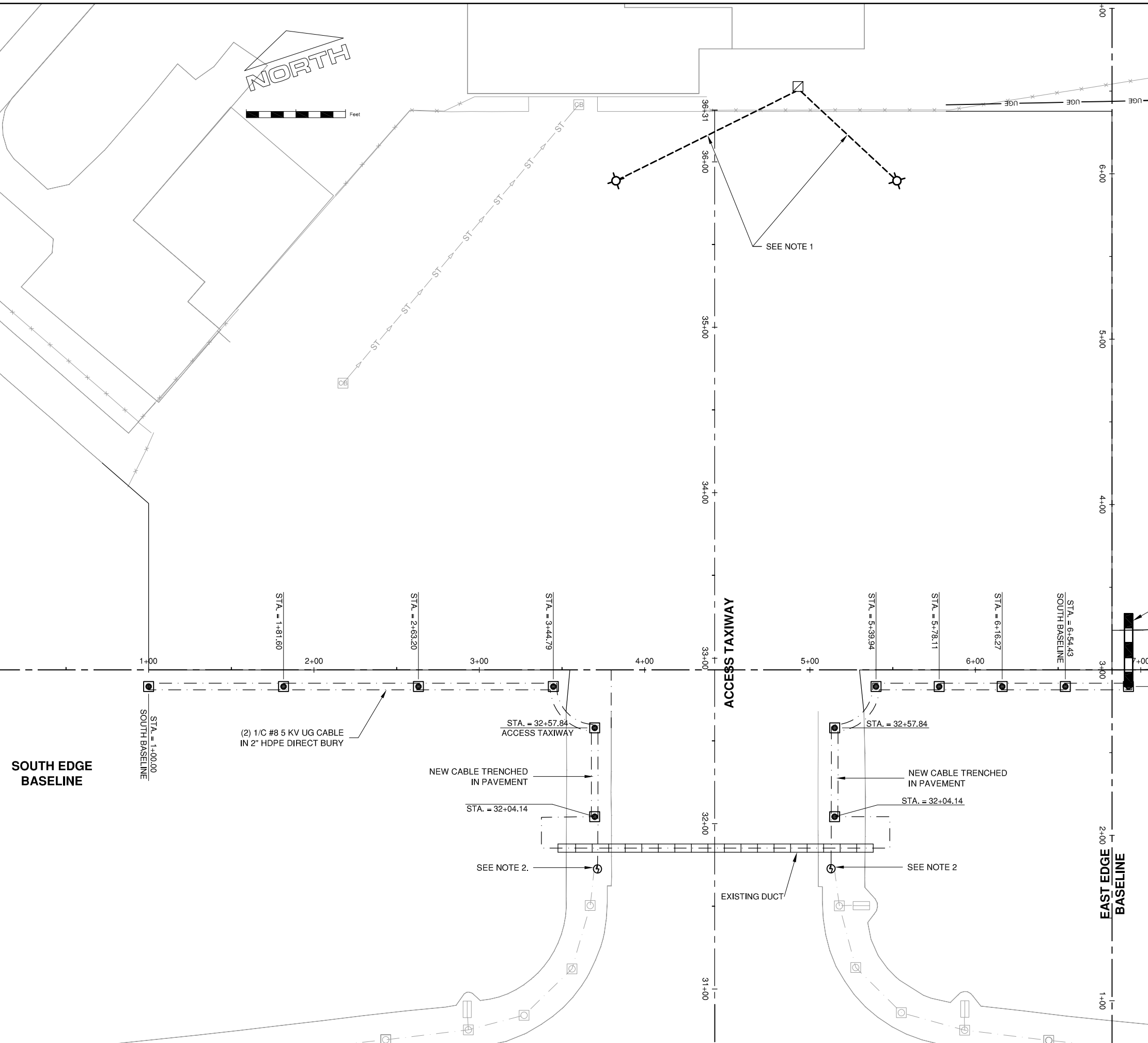
NOTES

- AN ADDITIONAL 200 LF OF 4" UNDERDRAIN AND UNDERDRAIN REMOVAL HAS BEEN ADDED FOR USE AS REQUIRED BY THE RESIDENT ENGINEER TO IMPROVE THE DRAINAGE IN THE DITCH ON THE SOUTH SIDE OF THE PERIMETER ROAD. APPROXIMATE STA. 28+00 TO STA. 30.00.



K:\Bloomington\12085-05_BMI_Corp\Draw\Sheets

K:\Bloomington\12085-05_BMI_Corp\Draw\Sheets



LEGEND

- NEW BASE LIGHT
- NEW APRON LIGHT
- SPLICE CAN
- NEW UNDERGROUND ELECTRICAL
- NEW 4-WAY DUCT
- EXISTING DUCT
- TAXIWAY E CIRCUIT
- DIRECTIONAL BORE

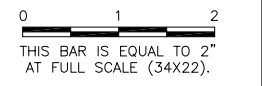
- NOTES:**
1. SEE APRON LIGHTING PLAN FOR ADDITIONAL INFORMATION.
 2. REMOVE EXISTING TAXIWAY LIGHT EQUIPMENT AND CONNECT TO TAXIWAY CIRCUIT. REPLACE LIGHT WITH SOLID BASE PLATE.
 3. CONTRACTOR SHALL VERIFY THE SIZE AND LOCATION OF PIPE PRIOR TO CONSTRUCTING BORE.

FILE: 1208505-ES101 ADND.dwg
 UPDATE BY: Chris Groth
 PLOT DATE: 4/22/2013 1:42 PM

1208505-C-SPAL
 1208505-V-VF3D
 BMI-V-AERL
 BMI-V-SPXP
 1208505-E-AL

BL069

REVISIONS		
NUMBER	BY	DATE



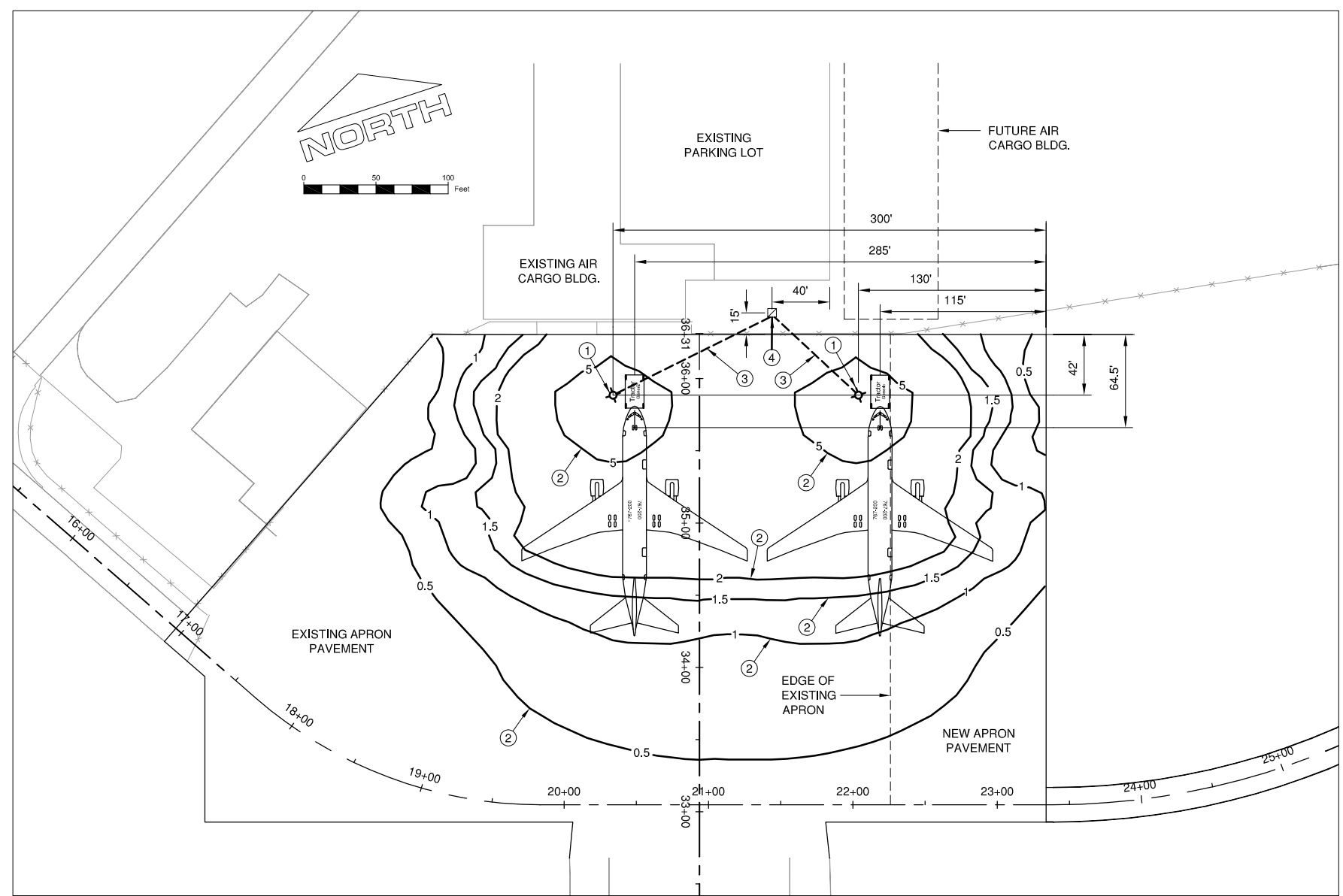
**BLOOMINGTON-NORMAL AIRPORT AUTHORITY
 CENTRAL ILLINOIS REGIONAL AIRPORT
 BLOOMINGTON, ILLINOIS**

**EXPAND AIR CARGO APRON
 TAXIWAY LIGHTING PLAN**

© Copyright CMT, Inc.

CMT
 CRAWFORD, MURPHY & TILLY, INC.
 CONSULTING ENGINEERS
 License No. 184-000613

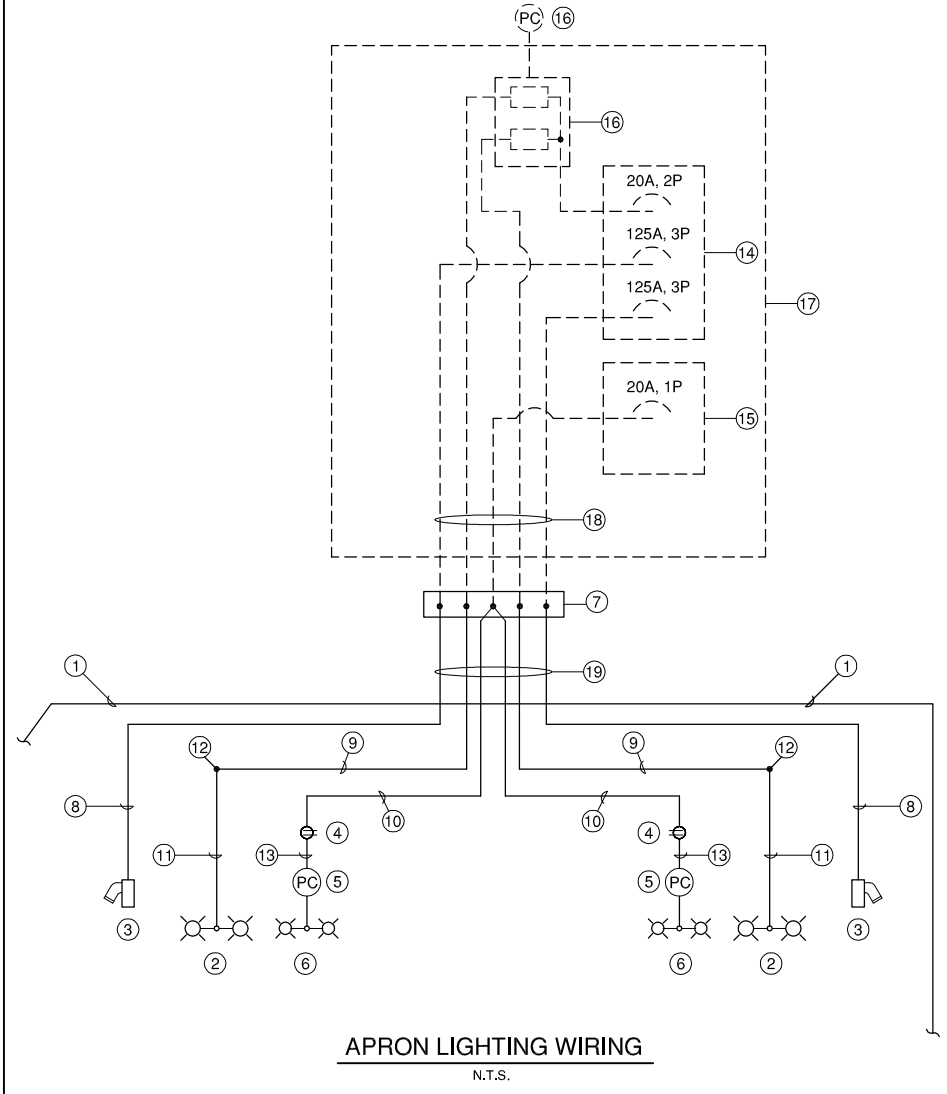
DESIGN BY:	CBG
DRAWN BY:	CMT
CHECKED BY:	RLV
APPROVED BY:	RLV
DATE:	MARCH 19, 2013
JOB No:	12085-05-00
IL PROJ. NO.	BMI-4288
AIP PROJ. NO.	3-17-0006-XX
SHEET 31A OF 55 SHEETS	



PLAN VIEW

PLAN VIEW NOTES

- 1 APRON LIGHT FIXTURE. LOCATE WHERE INDICATED OR AS DIRECTED BY THE RESIDENT ENGINEER IN THE FIELD.
- 2 APRON LIGHTING PHOTOMETRIC ILLUMINATION CONTOURS, IN FOOTCANDLES. CONTRACTOR SHALL ADJUST EACH LUMINAIRE AIMING POINT AS NECESSARY TO ATTAIN THESE VALUES AS CLOSELY AS POSSIBLE AS MEASURED ON THE APRON PAVEMENT.
- 3 WIRING FROM LIGHT FIXTURE TO HANDHOLE, VIA DIRECTIONAL BORE:
 - THREE #1 USE, ONE #6 GROUND IN 1-1/2" SCHEDULE 40 HDPE. 480V, 3-PHASE POWER FOR PORTABLE 400 HZ POWER CONVERTER.
 - TWO #12 USE, ONE #10 GROUND IN 3/4" SCHEDULE 40 HDPE. 480V, SINGLE-PHASE POWER FOR APRON LIGHT FIXTURE.
 - TWO #6 USE, ONE #10 GROUND IN 3/4" SCHEDULE 40 HDPE. 120V POWER FOR GFCI RECEPTACLE AND OBSTRUCTION LIGHT AT APRON LIGHT FIXTURE.
- 4 POLYMER CONCRETE HANDHOLE, OPEN-BOTTOM DESIGN, QUAZITE/HUBBELL #PG-2436-BA-42 WITH #PG-2436-HH-00-17 COVER, LABELED "ELECTRICAL", OR EQUIVALENT.



APRON LIGHTING WIRING
N.T.S.

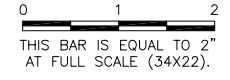
APRON LIGHTING WIRING

- 1 EDGE OF EXISTING AND PROPOSED APRON.
- 2 APRON LIGHT FIXTURE WITH NUMBER OF LUMINAIRES AS SHOWN.
- 3 400 HZ CONVERTER PIN & SLEEVE RECEPTACLE, 480V, 3W, 4P, WITH WEATHERPROOF COVER AND BACK BOX. RECEPTACLE SHALL BE MANUFACTURER, MAKE & MODEL NUMBER AS REQUIRED BY AIR CARGO OPERATOR.
- 4 WP/GFCI RECEPTACLE, 20A, 120V, CORROSION RESISTANT, PASS & SEYMOUR CAT. # 2095DSWRBK, OR EQUIVALENT MEETING REQUIREMENTS, IN CAST ALUMINUM FD DEVICE BOX. PROVIDE WEATHERPROOF-WHILE-IN-USE COVER WHICH COMPLIES WITH NEC ARTICLE 406.9B1, CAST ALUMINUM CONSTRUCTION, AS MANUFACTURED BY HUBBELL, WP26M, OR EQUIVALENT.
- 5 OBSTRUCTION LIGHT PHOTOCELL CONTROL, CROUSE-HINDS PEC52010, OR EQUIVALENT.
- 6 L-810 DOUBLE OBSTRUCTION LIGHT, LED TYPE, CROUSE-HINDS OWLFDR/120, OR EQUIVALENT.
- 7 POLYMER CONCRETE HANDHOLE, OPEN-BOTTOM DESIGN, QUAZITE/HUBBELL #PG-2436-BA-42 WITH #PG-2436-HH-00-17 COVER, LABELED "ELECTRICAL", OR EQUIVALENT.
- 8 THREE #1 USE, ONE #6 GROUND IN 1-1/2" SCHEDULE 40 HDPE. 480V, 3-PHASE POWER FOR PORTABLE 400 HZ POWER CONVERTER.
- 9 TWO #12 USE, ONE #10 GROUND IN 3/4" SCHEDULE 40 HDPE. 480V, SINGLE-PHASE POWER FOR APRON LIGHT FIXTURE.
- 10 TWO #6 USE, ONE #10 GROUND IN 3/4" SCHEDULE 40 HDPE. 120V POWER FOR GFCI RECEPTACLE AND OBSTRUCTION LIGHT AT APRON LIGHT FIXTURE.
- 11 #12 THWN WIRING INSIDE LIGHT POLE. SEE FIXTURE WIRING DETAIL FOR ADDITIONAL INFORMATION.
- 12 SPLICE INSIDE LIGHT POLE. SEE FIXTURE WIRING DETAIL FOR ADDITIONAL INFORMATION.
- 13 #12 THWN WIRING FROM RECEPTACLE UP TO L-810 OBSTRUCTION LIGHTS.
- 14 FUTURE 480V POWER PANEL WITH CIRCUIT BREAKERS SHOWN BY OTHERS. (N.I.C.)
- 15 FUTURE LIGHTING PANEL WITH CIRCUIT BREAKERS SHOWN BY OTHERS. (N.I.C.)
- 16 FUTURE LIGHTING CONTACTOR AND PHOTOCELL BY OTHERS. (N.I.C.)
- 17 FUTURE AIR CARGO BUILDING BY OTHERS. (N.I.C.)
- 18 FUTURE WIRING BY OTHERS. (N.I.C.)
- 19 TERMINATE WIRING IN HANDHOLE AND TAPE ENDS TO MAKE WATERTIGHT. PROVIDE PERMANENT LABELS ON ALL WIRING INDICATING DUTIES.

1208505-C-SPAL
 1208505-V-VF3D
 BMI-V-AERL
 BMI-V-SPXP
 1208505-C-MP

BL069

REVISIONS		
NUMBER	BY	DATE

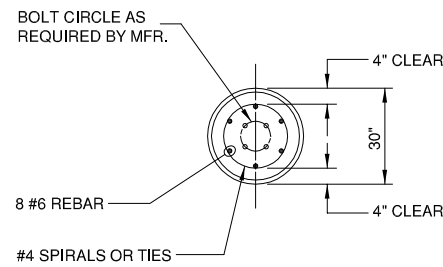


BLOOMINGTON-NORMAL AIRPORT AUTHORITY
 CENTRAL ILLINOIS REGIONAL AIRPORT
 BLOOMINGTON, ILLINOIS

EXPAND AIR CARGO APRON
 APRON LIGHTING PLAN

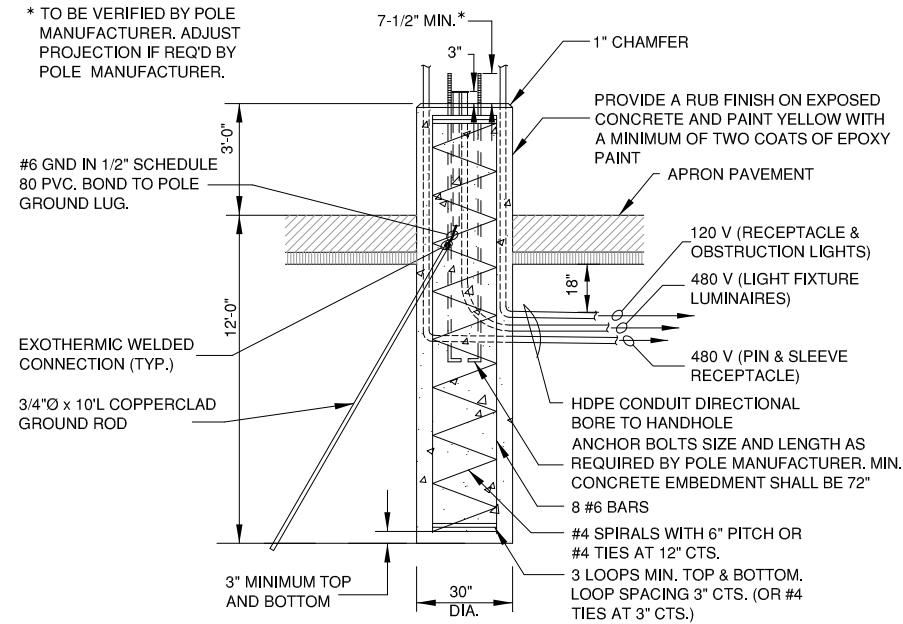
© Copyright GMT, Inc.
GMT
 CRAWFORD, MURPHY & TILLY, INC.
 CONSULTING ENGINEERS
 License No. 184-000613

DESIGN BY:	CBG
DRAWN BY:	CMT
CHECKED BY:	CBG
APPROVED BY:	RLV
DATE:	MARCH 19, 2013
JOB No:	12085-05-00
IL PROJ. NO. BMI-4288 AIP PROJ. NO. 3-17-0006-XX	
SHEET 35A OF 55 SHEETS	



TOP VIEW

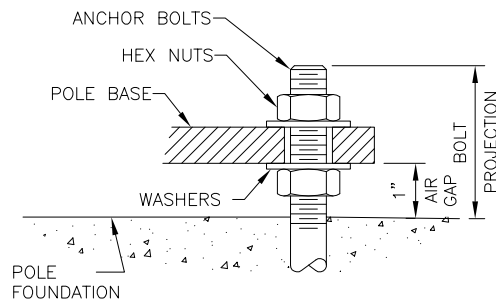
* TO BE VERIFIED BY POLE MANUFACTURER. ADJUST PROJECTION IF REQ'D BY POLE MANUFACTURER.



ELEVATION

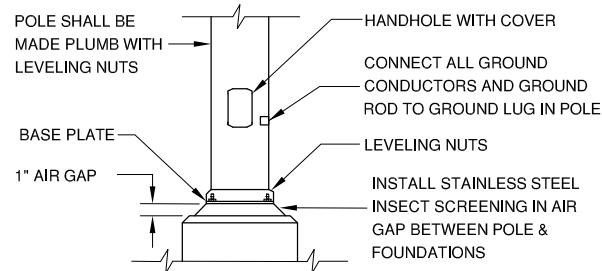
APRON LIGHT POLE FOUNDATION DETAIL (FIXTURE #1 SHOWN)

N.T.S.



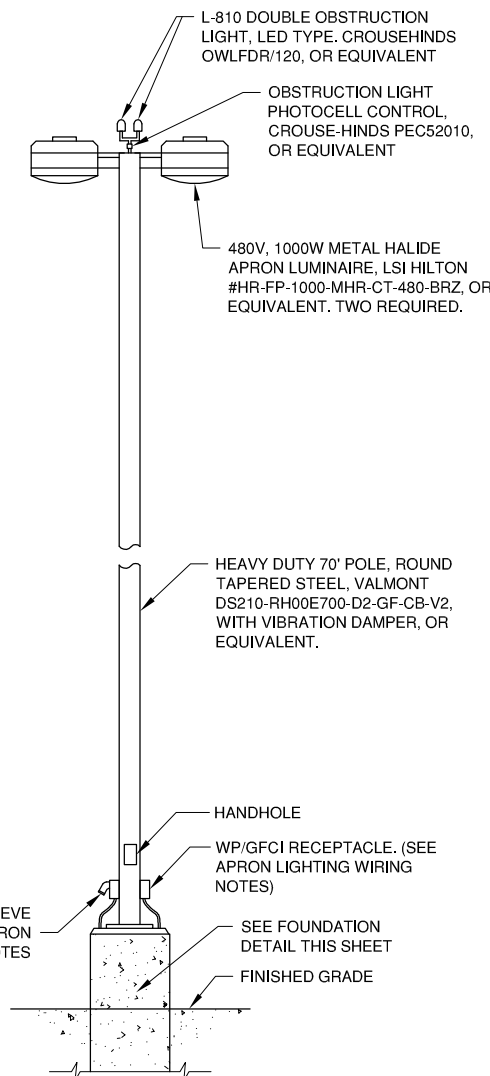
POLE BASE AIR GAP

N.T.S.



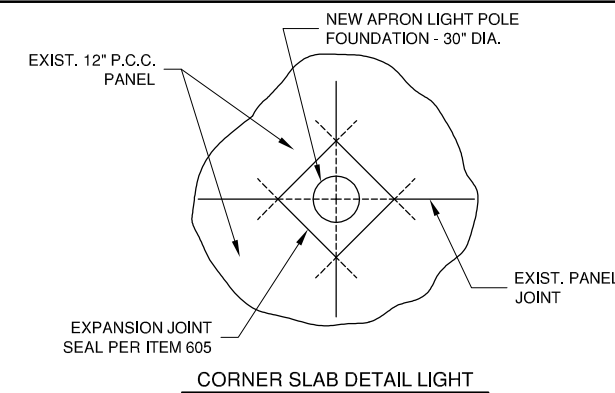
APRON LIGHT POLE DETAIL

N.T.S.

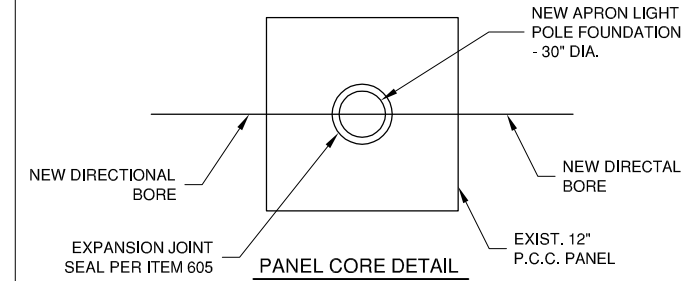


APRON LIGHT STANDARD DETAIL

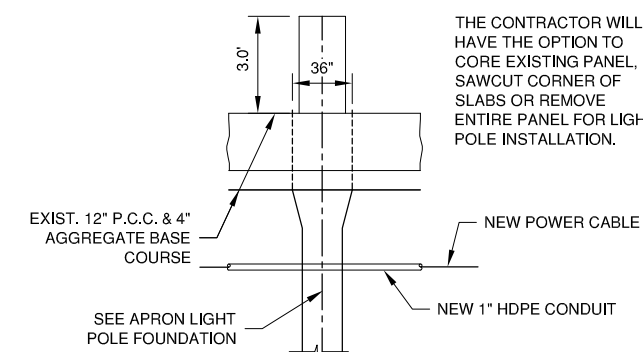
N.T.S.



CORNER SLAB DETAIL LIGHT



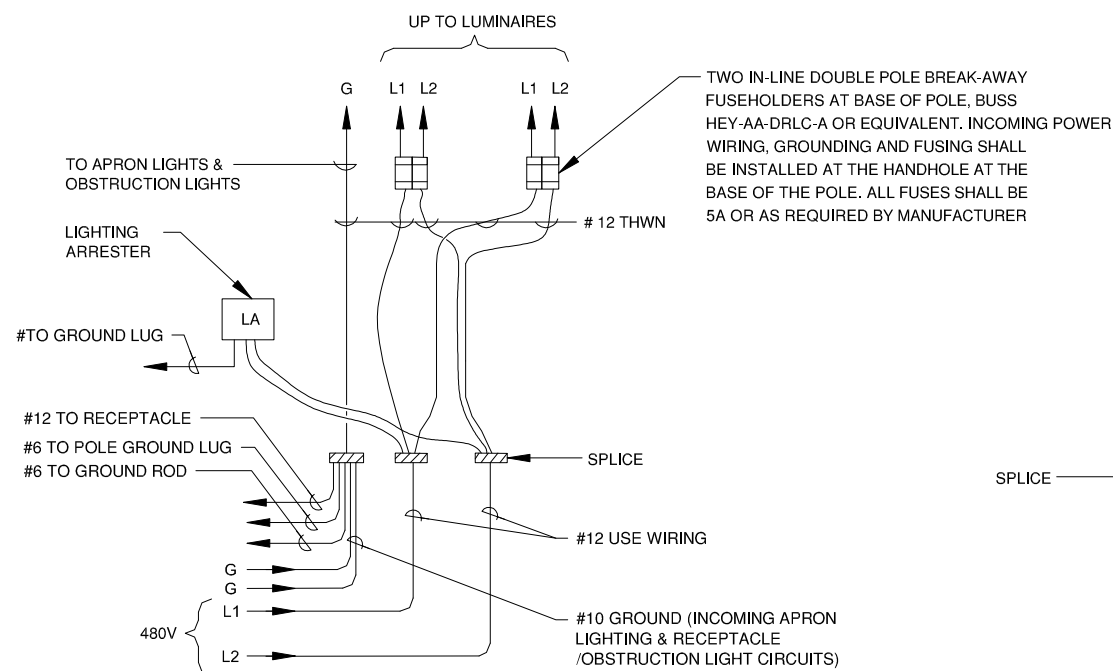
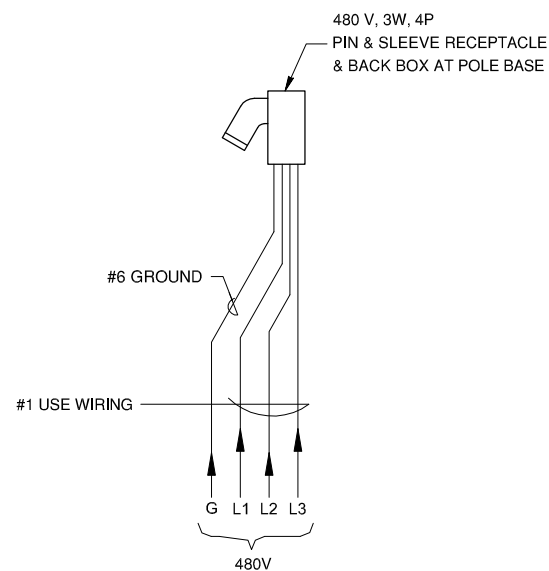
PANEL CORE DETAIL



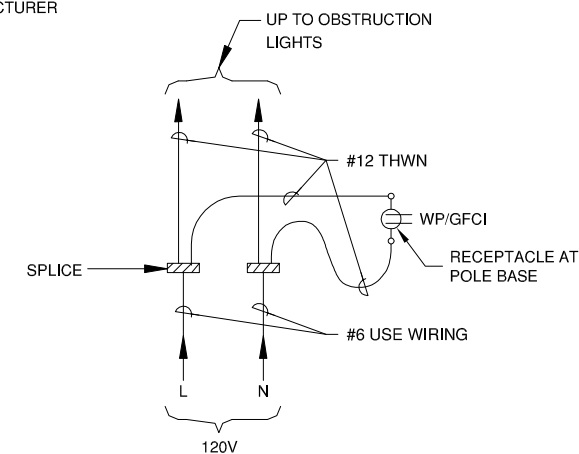
ELEVATION VIEW

APRON LIGHT INSTALL IN EXISTING PAVEMENT DETAIL

N.T.S.



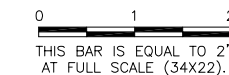
FIXTURE WIRING DETAIL



BL069

REVISIONS

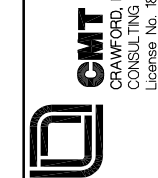
NUMBER	BY	DATE



BLOOMINGTON-NORMAL AIRPORT AUTHORITY
 CENTRAL ILLINOIS REGIONAL AIRPORT
 BLOOMINGTON, ILLINOIS

EXPAND AIR CARGO APRON
 APRON LIGHTING DETAILS

© Copyright CMT, Inc.



DESIGN BY:	CBG
DRAWN BY:	CMT
CHECKED BY:	CBG
APPROVED BY:	RLV
DATE:	MARCH 19, 2013
JOB No:	12085-05-00

IL PROJ. NO. BMI-4288
 AIP PROJ. NO. 3-17-0006-XX