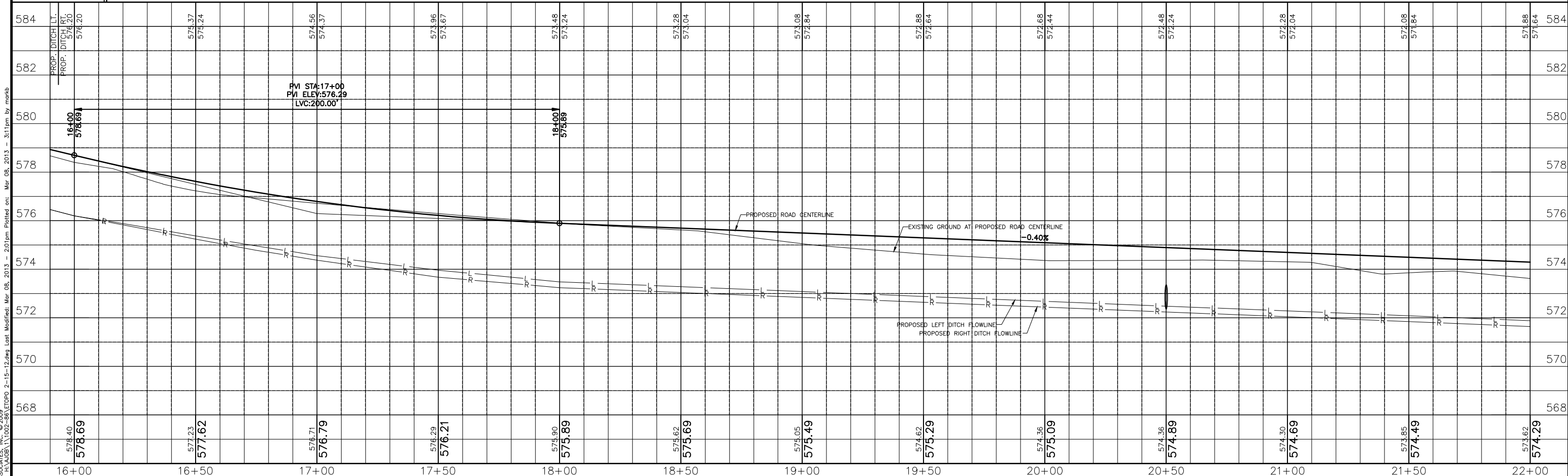
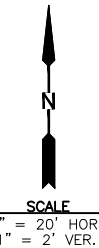


CENTERLINE CURVE DATA  
 $\Delta = 90^{\circ}37'23''$   
 $R = 34.00'$   
 $T = 34.37'$   
 $L = 53.78'$   
 P.C. STA. 16+15.62  
 P.I. STA. 16+42.51  
 P.T. STA. 16+69.40

STA. 20+50, 30' LT. TO 30' RT.  
 48 L.F. 12" RCP, CL. IV @ 0.40% W/  
 2 EA. P.R.C.F.E.S., 12"  
 (60 L.F. TOTAL LENGTH)  
 INV. EL. 572.48 (N)  
 INV. EL. 572.24 (S)



CHAMLIN & ASSOCIATES, INC. © 2009  
 Drawing Name: H:\A\08\11\02-86\ETOP0 2-15-12.dwg Last Modified: Mar 08, 2013 - 2:01pm Plotted on: Mar 08, 2013 - 3:11pm by marb

DRAWN BY: MAB	REVISIONS			
CHECKED BY: RTS	LEVEL	BY	DATE	DESCRIPTION
CREATED: 3/5/12	1	MAB	3/8/13	REVISED PER IDA COMMENTS

**CHAMLIN & ASSOCIATES**  
 PERU MORRIS  
 ILLINOIS

**MORRIS AIRPORT ACCESS ROAD**  
 CITY OF MORRIS, GRUNDY COUNTY, ILLINOIS

**PLAN & PROFILE**

**APPROVED FOR CONSTRUCTION**

CURRENT AS OF: 03/08/13  
 SCALE: 1" = 20'  
 SHEET 14 OF 38