

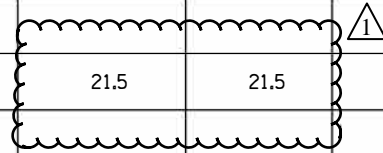
PLAN	SURVEYED	DATE
NOTE BOOK NO.	PLOTTED	BY
FILE NAME	GRADES CHECKED	
	STRUCTURE NOTATIONS CHECKED	
	ALIGNED	
	CHECKED	

PROFILE	SURVEYED	DATE
NOTE BOOK NO.	PLOTTED	BY
FILE NAME	GRADES CHECKED	
	STRUCTURE NOTATIONS CHECKED	
	ALIGNED	
	CHECKED	

FILE NAME = P:\2015\9558 IDOT Dist IL Route 47 at Main S of Elburn IPTB 771-281941-CADD\01-CADD\Sheet\160721-INT-S00 03.dgn

SUMMARY OF QUANTITIES

CODE NO.	ITEM	UNIT	TOTAL QUANTITY	CONSTRUCTION TYPE CODE									
				URBAN	ROADWAY	BRIDGE SN 045-3069	BRIDGE SN 045-3069	BRIDGE SN 045-2050	TRAFFIC SIGNAL	EVP	RETAINING WALL	BUILDING DEMO	
				0004	0010	0010	0010	0021	0021	0044	0044		
				80% FEDERAL									
				80% FEDERAL	80% FEDERAL	100% LOCAL	80% FEDERAL	10% STATE		80% FEDERAL	80% FEDERAL		
				20% STATE	20% KANE		20% STATE	10% KANE	100% E&C FPD.	20% STATE	20% STATE		
28000510	INLET FILTERS	EACH	42	42									
28001100	TEMPORARY EROSION CONTROL BLANKET	SQ YD	8190	8190									
28100101	STONE RIPRAP, CLASS A1	SQ YD	458	458									
28100107	STONE RIPRAP, CLASS A4	SQ YD	3346	1673	567		1106						
28200200	FILTER FABRIC	SQ YD	2291	618	567		1106						
30300001	AGGREGATE SUBGRADE IMPROVEMENT	CU YD	5382	5382									
30300112	AGGREGATE SUBGRADE IMPROVEMENT 12"	SQ YD	24902	24902									
31101200	SUBBASE GRANULAR MATERIAL, TYPE B 4"	SQ YD	14053	14053									
31102000	SUBBASE GRANULAR MATERIAL, TYPE C	CU YD	959	959									
35102000	AGGREGATE BASE COURSE, TYPE B 8"	SQ YD	286	286									
35501308	HOT-MIX ASPHALT BASE COURSE, 6"	SQ YD	477	477									
35501316	HOT-MIX ASPHALT BASE COURSE, 8"	SQ YD	116	116									
40300200	BITUMINOUS MATERIALS (PRIME COAT)	TON	21.5	21.5									
40600290	BITUMINOUS MATERIALS (TACK COAT)	POUND	11757	11757									



• SPECIALTY ITEM •• 100% KANE

MILHOUSE	USER NAME = mlopez2	DESIGNED - LAB	REVISED -
	FILE NAME =	DRAWN - RBB	REVISED -
	PLOT SCALE = 2.0000' / in.	CHECKED - RBB	REVISED -
	PLOT DATE = 1/28/2019	DATE - 1/28/19	REVISED -

STATE OF ILLINOIS
DEPARTMENT OF TRANSPORTATION

SUMMARY OF QUANTITIES

SCALE: SHEET NO. OF SHEETS STA. TO STA.

F.A.P. RTE.	SECTION	COUNTY	TOTAL SHEETS	SHEET NO.
326	107N-4	KANE	288	7
CONTRACT NO. 60721				
ILLINOIS FED. AID PROJECT				

PLAN	SURVEYED	DATE
NOTE BOOK NO.	GRADES CHECKED	BY
	ALIGNED	
	STRUCTURE	
	NOTATRS	
	CPFD	
	FILE NAME	

PROFILE	SURVEYED	DATE
NOTE BOOK NO.	GRADES CHECKED	BY
	ALIGNED	
	STRUCTURE	
	NOTATRS	
	CPFD	
	FILE NAME	

FILE NAME = P:\2015\9558 IDOT Dist IL Route 47 at Main S of Elburn IPTB 771-20154-CADD\01-CADD\01-CADD\01-Sheets\0160721-INT-S00 06.dgn

SUMMARY OF QUANTITIES

CODE NO.	ITEM	UNIT	TOTAL QUANTITY	CONSTRUCTION TYPE CODE									
				URBAN	ROADWAY	BRIDGE	BRIDGE	BRIDGE	TRAFFIC SIGNAL	EVP	RETAINING WALL	BUILDING DEMO	
				0004	0004	SN 045-3069 0010	SN 045-3069 0010	SN 045-2050 0010	0021	0021	0044	0044	
					80% FEDERAL								
				80% FEDERAL	80% FEDERAL	100% LOCAL	80% FEDERAL	10% STATE		80% FEDERAL	80% FEDERAL		
				20% STATE	20% KANE		20% STATE	10% KANE	100% E&C FPD.	20% STATE	20% STATE		
48101202	AGGREGATE SHOULDERS, TYPE B	CU YD	86	86									
48203029	HOT MIX ASPHALT SHOULDERS, 8"	SQ YD	9085	9085									
50100300	REMOVAL OF EXISTING STRUCTURES NO. 1	EACH	1		1								
50100400	REMOVAL OF EXISTING STRUCTURES NO. 2	EACH	1				1						
50105220	PIPE CULVERT REMOVAL	FOOT	208	208									
50200100	STRUCTURE EXCAVATION	CU YD	1347				150			1197			
50200300	COFFERDAM EXCAVATION	CU YD	1172		1172								
50201121	COFFERDAM (TYPE 2) (LOCATION- 1)	EACH	1		1								
50201122	COFFERDAM (TYPE 2) (LOCATION- 2)	EACH	1		1								
50300225	CONCRETE STRUCTURES	CU YD	864.3		418		105.3			341			
50300255	CONCRETE SUPERSTRUCTURE	CU YD	220.7				220.7						
50300260	BRIDGE DECK GROOVING	SQ YD	1674		787		887						
50300265	SEAL COAT CONCRETE	CU YD	598.8		598.8								
50300300	PROTECTIVE COAT	SQ YD	1820		802		1018						
50301350	CONCRETE SUPERSTRUCTURE (APPROACH SLAB)	CU YD	363.4		195		168.4						

• SPECIALTY ITEM •• 100% KANE

MILHOUSE	USER NAME = mlopez2	DESIGNED - LAB	REVISED -
	FILE NAME =	DRAWN - BTS	REVISED -
	PLOT SCALE = 2.0000' / in.	CHECKED - CTT	REVISED -
	PLOT DATE = 1/28/2019	DATE - 1/28/19	REVISED -

STATE OF ILLINOIS
DEPARTMENT OF TRANSPORTATION

SUMMARY OF QUANTITIES

SCALE: SHEET NO. OF SHEETS STA. TO STA.

F.A.P. RTE.	SECTION	COUNTY	TOTAL SHEETS	SHEET NO.
326	107N-4	KANE	288	9
CONTRACT NO. 60721				
ILLINOIS FED. AID PROJECT				

REV. 4/11/19 REV. 3/27/19 REV. 3/22/19 REV. 3/11/19

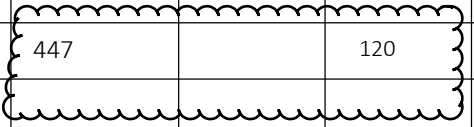
PLAN	SURVEYED	BY	DATE
NO.	PLOTTED		
	ALIGNMENT		
	CHECKED		
	FILE NAME		

PROFILE	SURVEYED	BY	DATE
NO.	PLOTTED		
	GRADES		
	CHECKED		
	STRUCTURE		
	NOTATION		
	CHPO		

FILE NAME = PA\2015\0558 IDOT Dist1 IL Route 47 at Main S of Elburn (P18 171-001)4-CADD\01-CADD\Sheets\160721-int-500 196.dgn

SUMMARY OF QUANTITIES

CODE NO.	ITEM	UNIT	TOTAL QUANTITY	CONSTRUCTION TYPE CODE							
				ROADWAY	BRIDGE	BRIDGE	BRIDGE	TRAFFIC SIGNAL	EVP	RETAINING WALL	BUILDING DEMO
				0004	SN 045-3069 0010	SN 045-3069 0010	SN 045-2050 0010	0021	0021	0044	0044
				80% FEDERAL							
				80% FEDERAL 20% STATE	80% FEDERAL 20% KANE	100% LOCAL	80% FEDERAL 20% STATE	10% STATE 10% KANE	100% E&C FPD.	80% FEDERAL 20% STATE	80% FEDERAL 20% STATE
X1400098	TEMPORARY FLASHING BEACON-SPAN WIRE MOUNTED INSTALLATION	EACH	1					1			
X1400107	FULL-ACTUATED CONTROLLER AND TYPE SUPER P CABINET	EACH	1					1			
X1400150	SERVICE INSTALLATION, CROUND MOUNTED, METERED	EACH	1					1			
X1400201	RADAR VEHICLE DETECTION SYSTEM, SINGLE APPROACH, STOP BAR	EACH	2					2			
X2300017	STEEL RAILINIG, TYPE SM (SPECIAL)	FOOT	447							327	



• SPECIALTY ITEM •• 100% KANE

MILHOUSE	USER NAME = Ibolzenius	DESIGNED - LAB	REVISED -
	FILE NAME =	DRAWN - BTS	REVISED -
	PLOT SCALE = 2.0000' / in.	CHECKED - CTT	REVISED -
	PLOT DATE = 3/6/2019	DATE - 1/28/19	REVISED -

STATE OF ILLINOIS
DEPARTMENT OF TRANSPORTATION

SUMMARY OF QUANTITIES

SCALE: SHEET NO. OF SHEETS STA. TO STA.

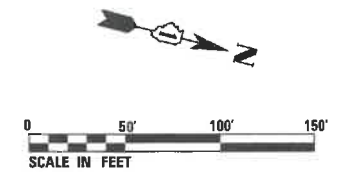
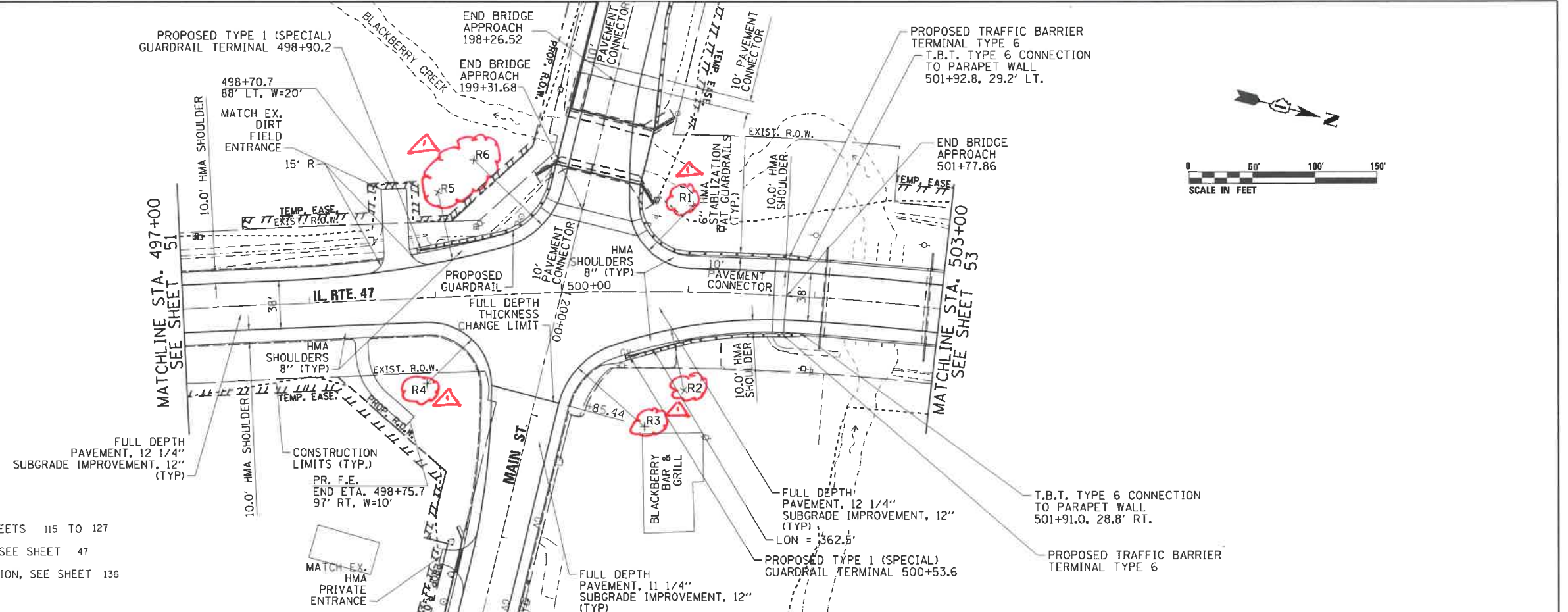
F.A.P. RTE.	SECTION	COUNTY	TOTAL SHEETS	SHEET NO.
326	107N-4	KANE	288	23A
CONTRACT NO. 60721				
ILLINOIS FED. AID PROJECT				

MAIN STREET INTERSECTION GEOMETRY

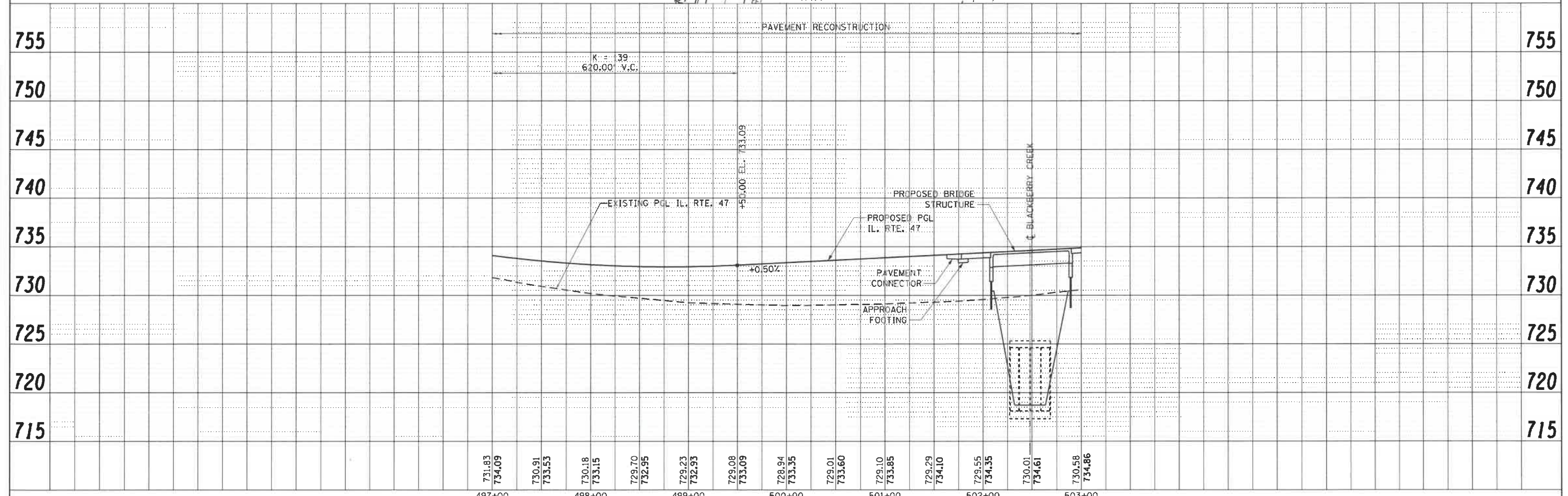
	STATION	OFFSET	RADIUS
R1	199+09.26	83.46' LT	50.0'
R2	200+52.56	112.22' LT	375.0'
R3	200+78.70	68.76' LT	65.0'
R4	200+83.97	79.27' RT	50.0'
R5	199+45.91	114.37' RT	750.0'
R6	199+23.99	76.02' RT	65.0'

PLAN	SURVEYED	DATE
	PLOTTED	BY
	ALIGNED	CHECKED
	NOTE BOOK	CHECKED
	NO.	ADD FILE NAME

PROFILE	SURVEYED	DATE
	PLOTTED	BY
	GRADES	CHECKED
	STRUCTURE	NOTATIONS
	NO.	CHPO

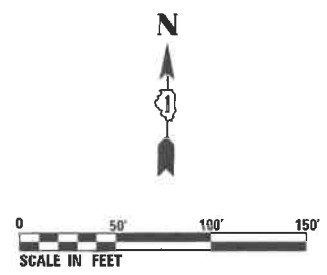
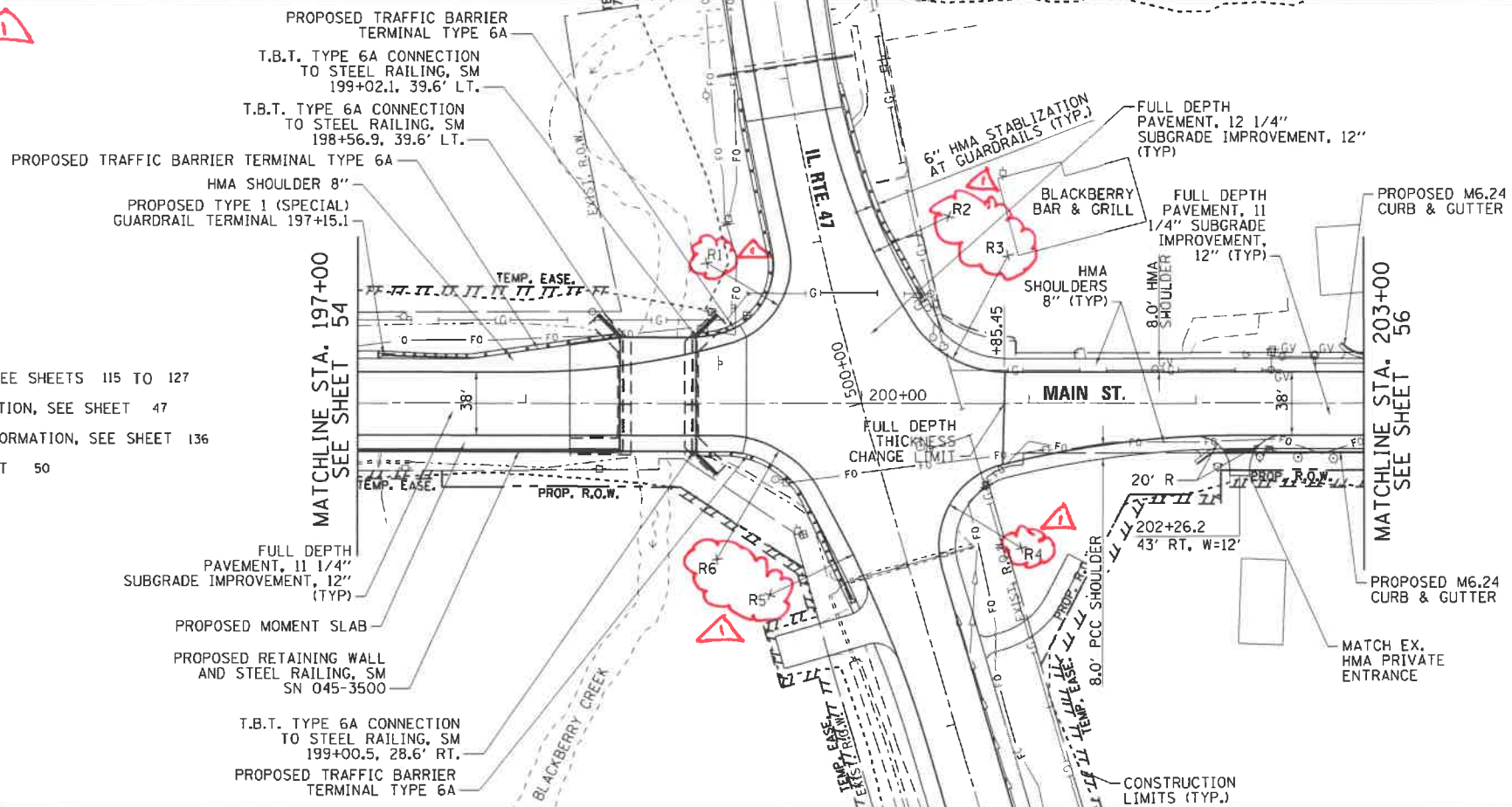


- NOTES:
- FOR PROPOSED DRAINAGE AND UTILITIES, SEE SHEETS 115 TO 127
 - FOR ADDITIONAL DRIVE/ENTRANCE INFORMATION, SEE SHEET 47
 - FOR ADDITIONAL INTERSECTION DESIGN INFORMATION, SEE SHEET 136
 - FOR BUILDING DEMOLITION PLAN, SEE SHEET 50



MILHOUSE	USER NAME = yagoub	DESIGNED	REVISED - 4/4/19	STATE OF ILLINOIS DEPARTMENT OF TRANSPORTATION	IL RTE. 47 PLAN & PROFILE		F.A.P. RTE. 326	SECTION 107N-4	COUNTY KANE	TOTAL SHEETS 288	SHEET NO. 52	
	USER NAME =	DRAWN	REVISED -		SCALE: 1"=50'	SHEET NO. 2 OF 6 SHEETS	STA.	TO STA.	CONTRACT NO. 60T21			
	PLOT SCALE = 100.0000' / in.	CHECKED	REVISED -		ILLINOIS FED. AID PROJECT							
	PLOT DATE = 4/3/2019	DATE 01/28/19	REVISED -									

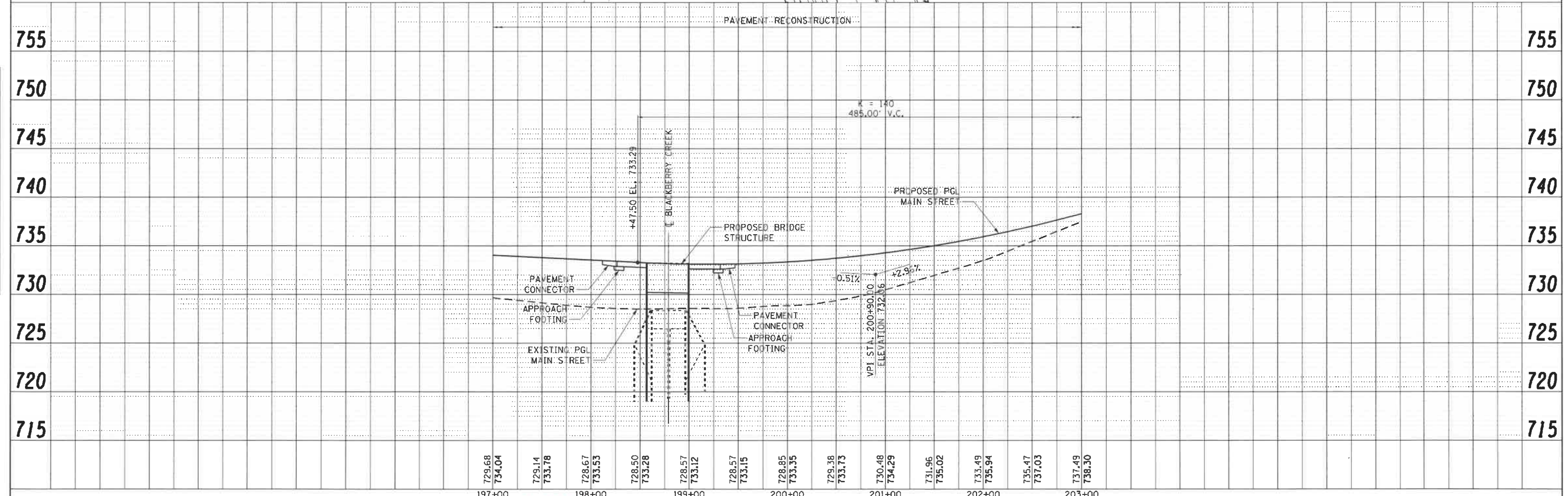
MAIN STREET INTERSECTION GEOMETRY			
STATION	OFFSET		RADIUS
R1	199+09.26	83.46' LT	50.0'
R2	200+52.56	112.22' LT	375.0'
R3	200+78.70	68.76' LT	65.0'
R4	200+83.97	79.27' RT	50.0'
R5	199+45.91	114.37' RT	750.0'
R6	199+23.99	76.02' RT	65.0'



- NOTES:
- FOR PROPOSED DRAINAGE AND UTILITIES, SEE SHEETS 115 TO 127
 - FOR ADDITIONAL DRIVE/ENTRANCE INFORMATION, SEE SHEET 47
 - FOR ADDITIONAL INTERSECTION DESIGN INFORMATION, SEE SHEET 136
 - FOR BUILDING DEMOLITION PLAN, SEE SHEET 50

PLAN	REVISIONS	DATE
NO.	BY	
	ALIGNED	
	CHECKED	
	DATE	

PROFILE	REVISIONS	DATE
NO.	BY	
	GRADES	
	CHECKED	
	DATE	

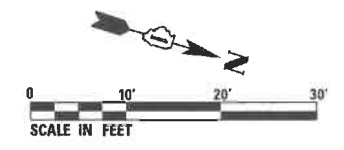
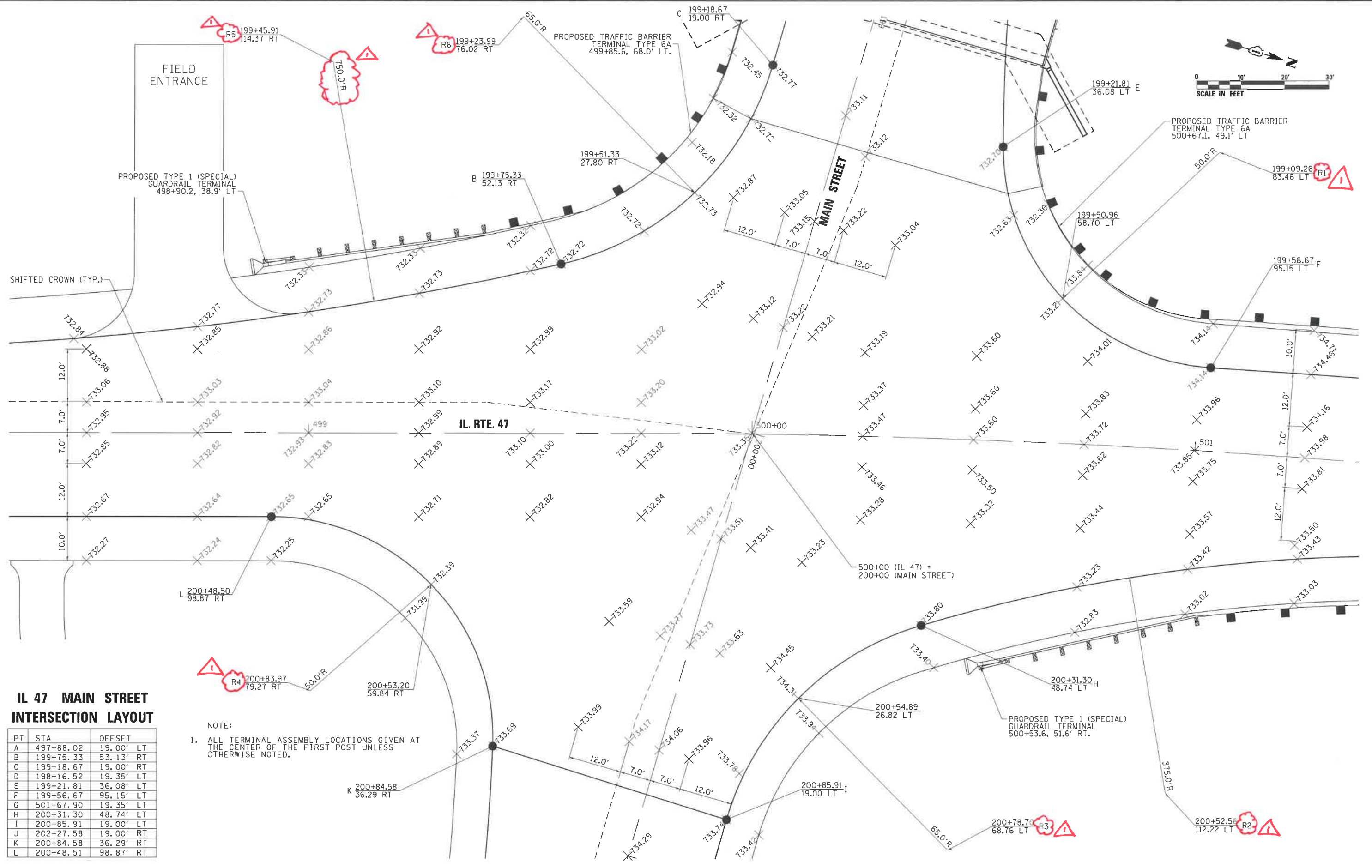


	USER NAME = geyycub	DESIGNED	REVISED -	STATE OF ILLINOIS DEPARTMENT OF TRANSPORTATION	MAIN ST. PLAN & PROFILE		F.A.P. RTE. 326	SECTION 107N-4	COUNTY KANE	TOTAL SHEETS 288	SHEET NO. 55	
	USER NAME =	DRAWN	REVISED -		SCALE: 1"=50'	SHEET NO. 5 OF 6 SHEETS	STA. TO STA.	CONTRACT NO. 60T21				
	PLOT SCALE = 100.0000' / in.	CHECKED	REVISED -		ILLINOIS FED. AID PROJECT							
	PLOT DATE = 4/3/2019	DATE 01/28/19	REVISED -									

PLAN	SURVEYED	DATE
	PLOTTED	
	ALIGNED	
	CHECKED	
	NO. _____	
	ADD FILE NAME	

PROFILE	SURVEYED	DATE
	PLOTTED	
	GRADES	
	CHECKED	
	STRUCTURE	
	NOTATIONS	
	CHKD	
	NO. _____	
	ADD FILE NAME	

FILE NAME: P:\2015\0508_1001_Draft IL Route 47 at Main S of Elburn.dwg



IL 47 MAIN STREET INTERSECTION LAYOUT

PT	STA	OFFSET
A	497+88.02	19.00' LT
B	199+75.33	53.13' RT
C	199+18.67	19.00' RT
D	198+16.52	19.35' LT
E	199+21.81	36.08' LT
F	199+56.67	95.15' LT
G	501+67.90	19.35' LT
H	200+31.30	48.74' LT
I	200+85.91	19.00' LT
J	202+27.58	19.00' RT
K	200+84.58	36.29' RT
L	200+48.51	98.87' RT

NOTE:
1. ALL TERMINAL ASSEMBLY LOCATIONS GIVEN AT THE CENTER OF THE FIRST POST UNLESS OTHERWISE NOTED.



USER NAME =	lbalzenus
FILE NAME =	
PLOT SCALE =	20,0000' / in.
PLOT DATE =	4/2/2019

DESIGNED -	
DRAWN -	
CHECKED -	
DATE -	1/28/19

REVISED -	4/19
REVISED -	
REVISED -	
REVISED -	

STATE OF ILLINOIS DEPARTMENT OF TRANSPORTATION

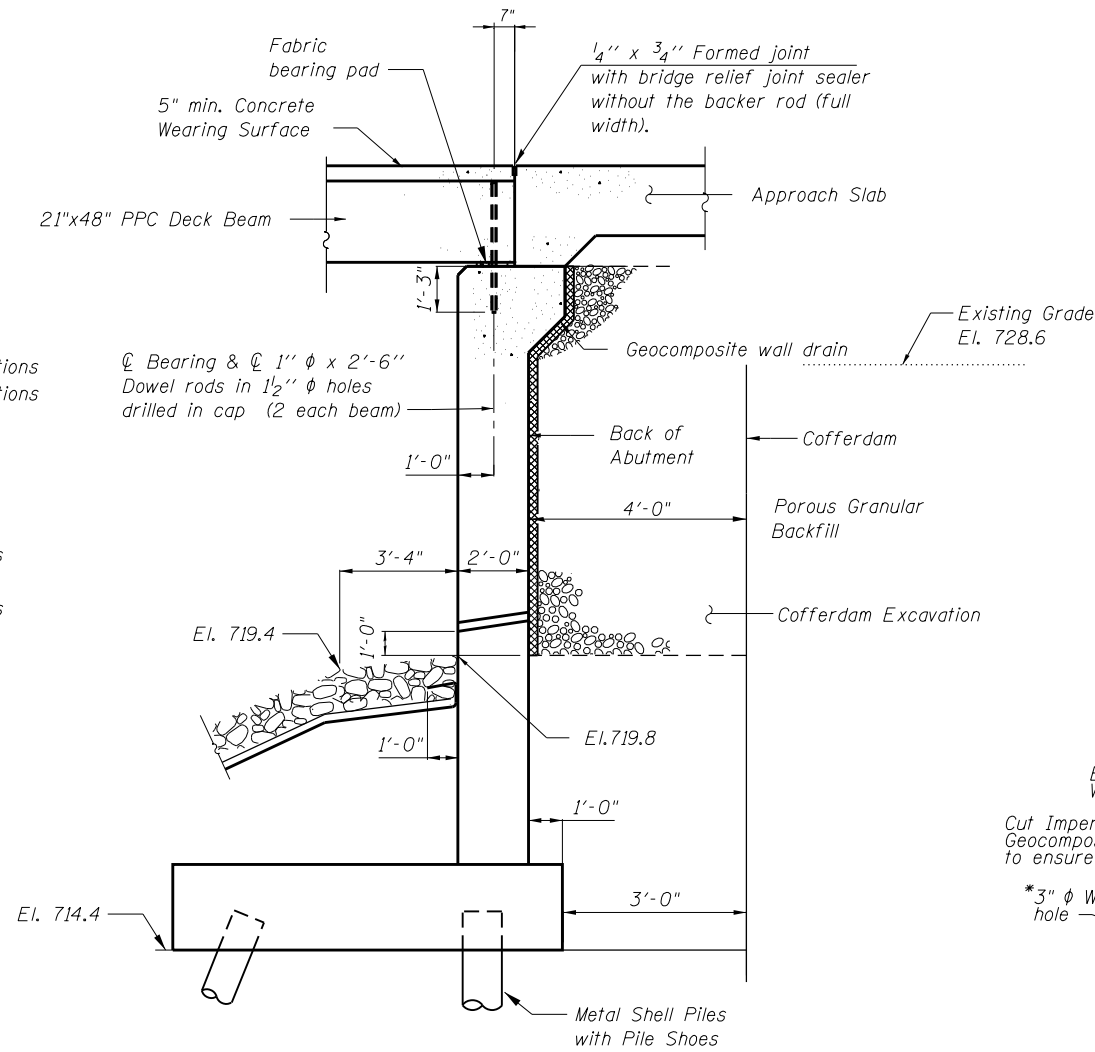
INTERSECTION DESIGN PLAN

SCALE: SHEET NO. 1 OF 1 SHEETS STA. TO STA.

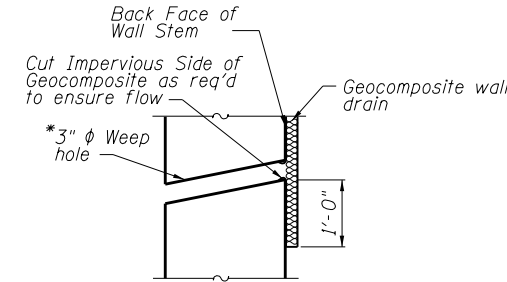
F.A.P. RTE.	SECTION	COUNTY	TOTAL SHEETS	SHEET NO.
326	107N-4	KANE	288	136
CONTRACT NO. 60T21				
ILLINOIS FED. AID PROJECT				

INDEX OF SHEETS

- SA-1. General Plan & Elevation
- SA-2. General Data
- SA-3. Temporary Soil Retention System & Cofferdam Details
- SA-4. Stage Construction
- SA-5. Temporary Concrete Barrier for Stage Construction
- SA-6. Top of Slab Elevations
- SA-7. Top of West Approach Slab Elevations
- SA-8. Top of East Approach Slab Elevations
- SA-9. Superstructure
- SA-10. Superstructure Details
- SA-11. 21"x48" P.P.C. Deck Beam
- SA-12. 21"x48" P.P.C. Deck Beam Details
- SA-13. Bridge West Approach Slab
- SA-14. Bridge West Approach Slab Details
- SA-15. Bridge East Approach Slab
- SA-16. Bridge East Approach Slab Details
- SA-17. Steel Railing Type SM with Concrete Wearing Surface
- SA-18. West Abutment Plan
- SA-19. West Abutment Elevation
- SA-20. West Abutment Pile Layout
- SA-21. East Abutment Plan
- SA-22. East Abutment Elevation
- SA-23. East Abutment Pile Layout
- SA-24. Abutment Sections & Bill of Material
- SA-25. Metal Shell Pile Details
- SA-26. Bar Splicer Assembly and Mechanical Splicer Details
- SA-27. Boring Logs 1
- SA-28. Boring Logs 2



SECTION THRU ABUTMENT



WEEP HOLE DRAIN DETAIL

*Weep hole spacing shall be at ± 8'-0" horizontally

TOTAL BILL OF MATERIAL

ITEM	UNIT	SUPER	SUB	TOTAL
Stone Riprap, Class A4	Sq. Yd.		567	567
Filter Fabric	Sq. Yd.		567	567
Removal of Existing Structures No.1	Each		1	1
Cofferdam Excavation	Cu. Yd.		1,172	1,172
Cofferdam (Type 2) (Location-1)	Each		1	1
Cofferdam (Type 2) (Location-2)	Each		1	1
Concrete Structures	Cu. Yd.		418	418
Bridge Deck Grooving	Sq. Yd.	787		787
Seal Coat Concrete	Cu. Yd.		598.8	598.8
Protective Coat	Sq. Yd.	802		802
Concrete Superstructure (Approach Slab)	Cu. Yd.	195		195
Precast Prestressed Concrete Deck Beams (21" Depth)	Sq. Ft.	3072		3072
Reinforcement Bars, Epoxy Coated	Pound	87,030	51,860	138,890
Bar Splicers	Each	258	176	434
Steel Railing, Type SM SPECIAL	Foot	120		120
Furnishing Metal Shell Piles 14" x.312"	Foot		1,781	1,781
Driving Piles	Foot		1,781	1,781
Test Pile Metal Shells	Each		2	2
Pile Shoes	Each		75	75
Temporary Bridge Complete	Each	1		1
Name Plates	Each	1		1
Temporary Soil Retention System	Sq. Ft.		1,514	1,514
Geocomposite Wall Drain	Sq. Yd.		241	241
Concrete Wearing Surface, 5"	Sq. Yd.	342		342
Granular Backfill for Structures	Cu. Yd.		322	322
Temporary Slab Support System	Each		4	4

GENERAL NOTES

1. Reinforcement bars designated (E) shall be epoxy coated.
2. Layout of the slope protection system may be varied to suit ground conditions in the field as directed by the Engineer.
3. The embankment configuration shown shall be the minimum that must be placed and compacted prior to construction at the abutments.
4. Seal coat thickness design is based on the Estimated Water Surface Elevation (EWSE). Cofferdam design details and proposed changes in seal coat thickness shall be submitted to the Engineer for approval with the cofferdam design.
5. Excavation behind existing abutment walls shall be performed to balance front and back soil pressure before removing the existing superstructure. The Contractor shall sawcut the upper portion of the existing abutment at the stage removal line before Stage 2 removal to ensure the remaining portion will not be prematurely damaged.
6. A cantilevered sheet piling design does not appear feasible and additional members or other retention systems may be necessary. The Contractor shall submit a temporary soil retention system design including plan details and calculations for review and acceptance by the Engineer.
7. Contractor to submit a Structural Assessment Report for the attachment and removal of the temporary bridge to the existing bridge.
8. The Contractor is advised that the existing concrete deck slab is in advanced deteriorated condition with reduced load carrying capacity. It is the Contractor's responsibility to account for the condition of the existing structure when developing construction procedures for the complete or partial removal, or replacement of the structure. An Existing Structure Information Package is available upon request as noted in the special provisions.

WATERWAY INFORMATION

Drainage Area = 11.68 Square Miles Max. Recorded H.W.E. = N/A
 Existing Low Grade Elev. - 728.61 at Sta.199+00
 Proposed Low Grade Elev. - 732.09 at Sta.198+00

Flood	Freq. Yr.	Discharge C.F.S.	Opening Sq. Ft.		Nat. H.W.E.		Head - Ft.		Headwater El.	
			Exist.	Prop.	Exist.	Prop.	Exist.	Prop.	Exist.	Prop.
	10	634	308.04	398.64	725.84	0.12	0.05	725.96	725.89	
Design	50	1120	350.20	453.20	727.08	0.40	0.10	727.48	727.18	
Base	100	1376	366.18	473.88	727.55	0.38	0.14	727.93	727.69	
Max. Calc.	500	2097	400.18	517.88	728.55	1.23	0.31	729.78	728.86	

10 Year Velocity thru Existing Bridge= 2.06 fps
 10 Year Velocity thru Proposed Bridge= 1.59 fps
 2-Year Flow Rate = 265 cfs

DESIGN SCOUR ELEVATION TABLE

Design Scour Elevations (ft.)	Design Scour Elevations (ft.)		Item 113
	W. Abut.	E. Abut.	
Q100	711.03	714.09	5
Q500	705.08	709.23	
Design	711.03	714.09	
Check	705.08	709.23	

CURRENT RATINGS ON FILE FOR EXISTING STRUCTURE

Inventory: HS 14
 Operating: HS 23
 Live Load Restrictions: No

Inventory and Operating Ratings and Live Load Restrictions are provided for information only. Inventory and Operating Ratings are based on HS loading and configuration. Live Load Restrictions are based on Illinois legal loads and configurations. The Ratings and Live Load Restrictions are not necessarily representative of capacities to support the Contractor's equipment.

STATION 198+79.10
 BUILT BY
 STATE OF ILLINOIS
 F.A.P. RT. 524 SEC. 107 N-4
 LOADING HL-93
 STRUCTURE NO. 045-3069

NAME PLATE
 See Std. 515001

FILE NAME = F:\2015\0558\DOT_Draft\IL_Route_47_at_Main_S_of_Elburn\PTB_171-041-04-CADD\01_CADD_Sheets\10160721-SA-2_GenData.dgn

	USER NAME = yagoub	DESIGNED - LAS	REVISED -	STATE OF ILLINOIS DEPARTMENT OF TRANSPORTATION	GENERAL DATA STRUCTURE NO. 045-3069	F.A.P. RTE	SECTION	COUNTY	TOTAL SHEETS	SHEET NO.
	PLOT SCALE = 0:2.0000 '1" / in.	DRAWN - TCS	REVISED -			326	107N-4	KANE	288	159
PLOT DATE = 3/22/2019	CHECKED - LAS	REVISED -		CONTRACT NO. 60T21			ILLINOIS FED. AID PROJECT			