

048

04-26-2019 LETTING ITEM 048

F.A.I. RTE.	SECTION	COUNTY	TOTAL SHEETS	SHEET NO.
55	168-3) CJS-1 (68-4) CJS	MONTGOMERY	6	1
ILLINOIS			CONTRACT: 72L12	

STATE OF ILLINOIS
DEPARTMENT OF TRANSPORTATION
DIVISION OF HIGHWAYS

PROPOSED CONTRACT MAINTENANCE

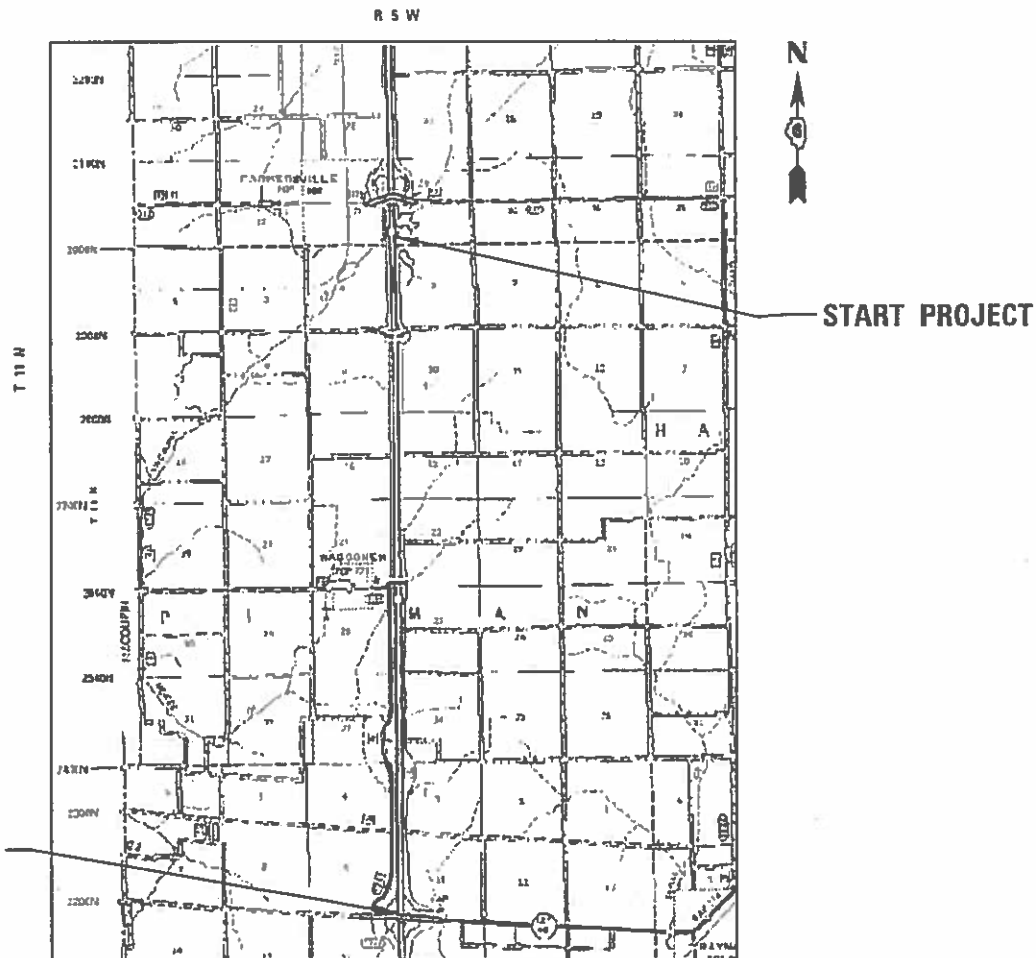
FAI 55 (I-55)
SECTION (68-3) CJS-1 (68-4) CJS
CENTERLINE MICRO-SURFACING
MONTGOMERY COUNTY

FOR INDEX OF SHEETS, SEE SHEET NO. 2

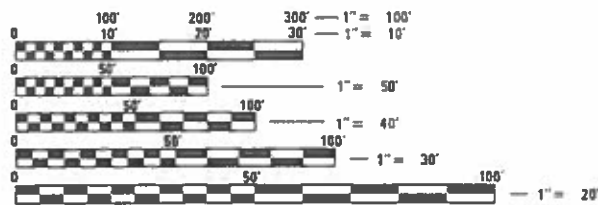
D-96-034-19



C-96-045-19



ADT: 15,900
HCV: 5,450
SU: 1,850
MU: 3,700



FULL SIZE PLANS HAVE BEEN PREPARED USING STANDARD ENGINEERING SCALES. REDUCED SIZED PLANS WILL NOT CONFORM TO STANDARD SCALES. IN MAKING MEASUREMENTS ON REDUCED PLANS, THE ABOVE SCALES MAY BE USED.

J.U.L.I.E.
JOINT UTILITY LOCATION INFORMATION FOR EXCAVATION
1-800-892-0123
OR 811

PLAN AND CONTRACT TECHNICIAN
TIMOTHY SHARP (217) 782-7743

CONTRACT NO. 72L12

GROSS LENGTH: 42,451 FT = 8.04 MI
NET LENGTH: 42,451 FT = 8.04 MI

STATE OF ILLINOIS
DEPARTMENT OF TRANSPORTATION
DIVISION OF HIGHWAYS

SUBMITTED 5 February 2019
[Signature]
DEPUTY DIRECTOR OF HIGHWAYS, REGION ENGINEER

March 22, 2019
[Signature]
ENGINEER OF DESIGN AND ENVIRONMENT

March 22, 2019
[Signature]
DIRECTOR OF HIGHWAYS PROJECT IMPLEMENTATION

PRINTED BY THE AUTHORITY
OF THE STATE OF ILLINOIS

INDEX

SHEET NO.	DESCRIPTION
1.	COVER SHEET
2.	INDEX, STANDARDS, GENERAL NOTES, SIGNATURES
3.	SUMMARY OF QUANTITIES
4.	SCHEDULES
5.	LOCATION MAP
6.	TYPICAL SECTIONS

STANDARDS

STANDARD NO.	DESCRIPTION
701101-05	OFF-RD OPERATIONS, MULTILANE, 15' TO 24" FROM PAVEMENT EDGE
701106-02	OFF-RD OPERATIONS, MULTILANE, MORE THAN 15' AWAY
701400-09	APPROACH TO LANE CLOSURE, FREEWAY/EXPRESSWAY
701406-12	LANE CLOSURE, FREEWAY/EXPRESSWAY-DAY OPERATIONS ONLY
701411-09	LANE CLOSURE, MULTILANE, AT ENTRANCE OR EXIT RAMP, FOR SPEEDS >45 MPH
701426-09	LANE CLOSURE, MULTILANE, INTERMITTENT OR MOVING OPER., FOR SPEEDS >45 MPH
701428-01	TRAFFIC CONTROL SETUP AND REMOVAL FREEWAY/EXPRESSWAY
701901-08	TRAFFIC CONTROL DEVICES
780001-05	TYPICAL PAVEMENT MARKINGS
781001-04	TYPICAL APP RAISED REFLECTIVE PAVEMENT MARKERS

NOTES

1. PROPOSED SHORT-TERM PAVEMENT MARKING SHALL BE PAINT - TAPE WILL NOT BE ALLOWED.
2. THE PROPOSED MOD URETHANE PAVEMENT MARKING SHALL BE PLACED DIRECTLY OVER THE PROPOSED SHORT-TERM PAVEMENT MARKING.

**STATE OF ILLINOIS
DEPARTMENT OF TRANSPORTATION
DIVISION OF HIGHWAYS
DISTRICT 6**

EXAMINED 8 February 20 19
[Signature]
ENGINEER OF OPERATIONS

EXAMINED 5 February 20 19
[Signature]
ENGINEER OF PROJECT IMPLEMENTATION

EXAMINED January 29 20 19
[Signature]
ENGINEER OF PROGRAM DEVELOPMENT

APPLICATION RATES

THE FOLLOWING RATES OF APPLICATION WERE UTILIZED TO CALCULATE QUANTITIES

MICROSURFACING, SINGLE PASS	20 LBS/SQ YD
BITUMINOUS MATERIAL - TACK COAT	0.025 LBS/SQ FT
RAISED REFLECTIVE PAVEMENT MARKERS	2 EACH PER 80 FT

0-01625-6022
100% STATE
MONTGOMERY

CODE NO.	ITEM	UNIT	TOTAL QUANTITY	ROADWAY
				0005 RURAL
40400121	MICRO-SURFACING, SINGLE PASS, MIXTURE D	SQ YD	23748	23748
40600290	BITUMINOUS MATERIALS (TACK COAT)	POUND	6412	6412
40600400	MIXTURE FOR CRACKS, JOINTS, AND FLANGEWAYS	TON	12	12
67100100	MOBILIZATION	L SUM	1	1
70100700	TRAFFIC CONTROL AND PROTECTION, STANDARD 701406	L SUM	1	1
70100420	TRAFFIC CONTROL AND PROTECTION, STANDARD 701411	EACH	1	1
70107025	CHANGEABLE MESSAGE SIGN	CAL DA	60	60
70300100	SHORT-TERM PAVEMENT MARKING	FOOT	8549	8549
* 78009005	MODIFIED URETHANE PAVEMENT MARKING, TYPE II, LINE 5"	FOOT	21373	21373
* 78100100	RAISED REFLECTIVE PAVEMENT MARKER	EACH	2137	2137
78300200	RAISED REFLECTIVE PAVEMENT MARKER REMOVAL	EACH	2137	2137

* SPECIALTY ITEM

MAINLINE									
LOCATION STA. TO STA.		LENGTH	MIXTURE FOR CRACKS, JOINTS, AND FLANGEWAYS	SHORT-TERM PAVEMENT MARKING 4' EVERY 40'	MOD URETHANE PAVEMENT MARKING TYPE II, 5" *	RAISED REFLECTIVE PAVEMENT MARKER	RAISED REFLECTIVE PAVEMENT MARKER REMOVAL	MICRO- SURFACING SINGLE PASS TYPE II MIXTURE D	BITUMINOUS MATERIALS (TACK COAT)
		FT	TONS	FT	FT	EACH	EACH	SQ YD	POUNDS
NORTHBOUND									
1491+00.00	1333+65.20	15734.8	2.2	1573	3934	393	393	4371	1180
STA EQN 1333+65.2=1333+60.2									
1333+60.20	1066+43.80	26716	3.7	2672	6679	668	668	7421	2004
EXIT RAMP IL 48									
		295	0.0	30	74	7	7	82	22
SOUTHBOUND									
1491+00.00	1333+65.20	15735	2.2	1573	3934	393	393	4371	1180
STA EQN 1333+65.2=1333+60.2									
1333+60.20	1066+43.80	26716.4	3.7	2672	6679	668	668	7421	2004
EXIT RAMP IL 48									
		295	0.0	30	74	7	7	82	22
TOTAL		85492	12	8549	21373	2137	2137	23748	6412

* 10' every 40' over short term



STA 1066+43.80

STA EQN
 $1333+65.2BK = 1333+60.2AH$

STA 1491+00.00

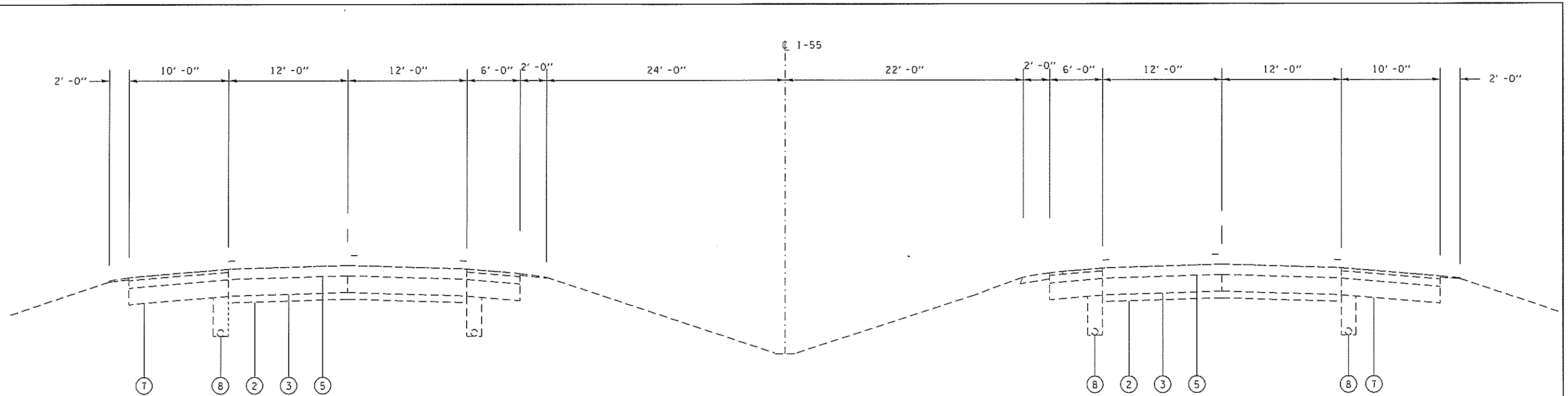
FILE NAME =	USER NAME = nicholson1	DESIGNED -	REVISED -
S:\CONTRACTS\72L12 - MONTGOMERY COUNTY - CENTERLINE JOINT (2)\PLANS\72L12-sh1	PROJECT LOCATION: 046	REVISOR -	REVISOR -
PLOT SCALE = 0.410000 / in.	CHECKED -	REVISOR -	REVISOR -
PLOT DATE = 2/5/2018	DATE = 8-21-2013	DESIGNER -	DESIGNER -

STATE OF ILLINOIS
 DEPARTMENT OF TRANSPORTATION

SP. NO.	CHECT	OF	CHECTS	STA	TO	STA
---------	-------	----	--------	-----	----	-----

PROJECT LOCATION

F.A.I. RTE.	SECTION	COUNTY	TOTAL SHEETS	SHEET NO.
55	(68-3) CJS-1 (68-4) CJS	MONTGOMERY	6	5
CONTRACT NO. 72L12				



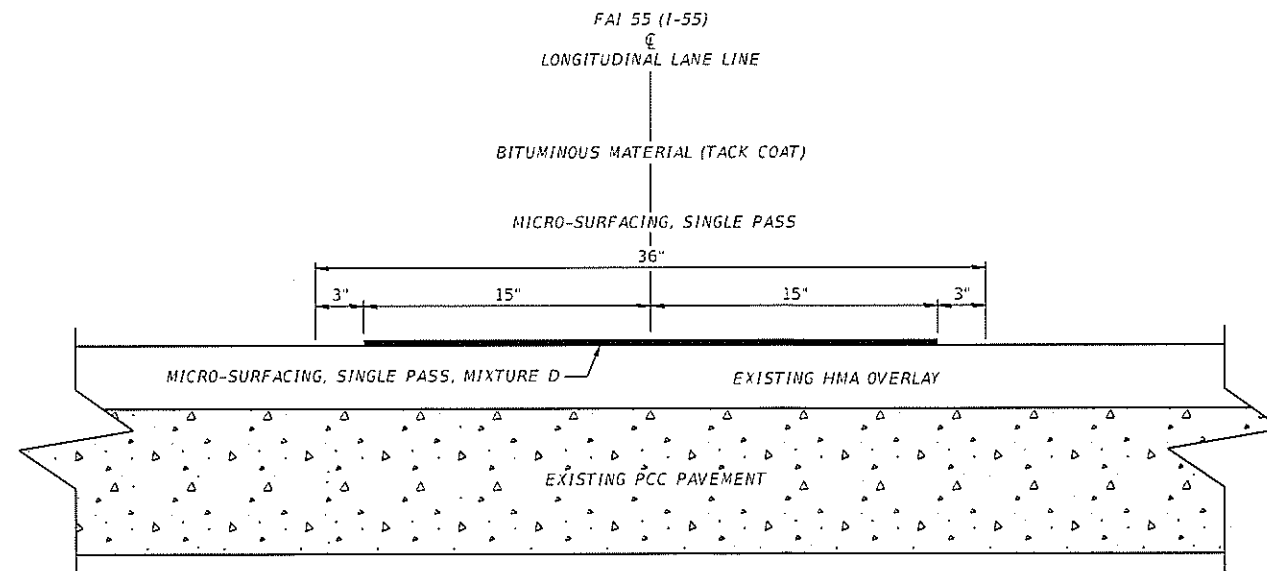
FAI 55

LEGEND

- ① EX STABILIZED SUB-BASE 4"
- ② EX AGGREGATE SUB-BASE 4"
- ③ EX PCC PAVEMENT 9"
- ④ EX CRPCC PAVEMENT 8"
- ⑤ EX HOT-MIX ASPHALT SURFACE COURSE (VARIABLE THICKNESS)
- ⑥ EX AGGREGAE SHOULDERS
- ⑦ EX HOT-MIX ASPHALT SHOULDERS
- ⑧ EX PIPE UNDERDRAIN

MICRO-SURFACING NOTES:

BITUMINOUS MATERIALS (TACK COAT) SHALL BE THREE (3) INCHES WIDER ON EACH SIDE OF THE MICRO-SURFACING.
 CLEAN JOINT AND PATCH SMALL DETERIORATED AREAS AND RAISED PAVEMENT MARKER REMOVAL AREAS WITH "MIXTURE FOR CRACKS, JOINTS AND FLANGEWAYS" PRIOR TO BITUMINOUS MATERIALS (TACK COAT) AND MICRO-SURFACING.



CENTERLINE
 MICRO-SURFACING
 SINGLE PASS DETAIL
 (NOT TO SCALE)

NOTES:

1. JOINTS SHALL BE CLEANED OF LOOSE AND UNSOUND MATERIAL AND PATCHED WITH MIXTURE FOR CRACKS, JOINTS AND FLANGEWAYS PRIOR TO MICROSURFACING

FILE NAME =	USER NAME = nicholson1	DESIGNED -	REVISED -	STATE OF ILLINOIS DEPARTMENT OF TRANSPORTATION	TYPICAL SECTIONS		F.A.I. RTE.	SECTION	COUNTY	TOTAL SHEETS	SHEET NO.
S:\CONTRMAINT\CAD\72L12 - MONTGOMERY COUNTY - CENTERLINE JOINT 12\PLANS\72L12-sh\DR\72L12.dgn	CHECKED -	REVISED -	55				(68-3) CJS-1 (68-4) CJS	MONTGOMERY	6	6	
Default	DATE -	REVISED -	CONTRACT NO. 72L12								
PLT SCALE = 80.0000' / in.	DATE -	REVISED -	ILLINOIS FED. AID PROJECT								