

STATE OF ILLINOIS
DEPARTMENT OF TRANSPORTATION

F.A.P. RTE	SECTION	COUNTY	TOTAL SHEETS	SHEET NO.
314	(110,111)RS-5	MADISON	6	1
		ILLINOIS	CONTRACT NO. 76M13	

FOR INDEX OF SHEETS, SEE SHEET NO. 2

PROPOSED HIGHWAY PLANS

FAP ROUTE 314 (IL 4)
SECTION (110,111)RS-5
PROJECT NHPP-8521(194)
MICRO-SURFACING
MADISON COUNTY

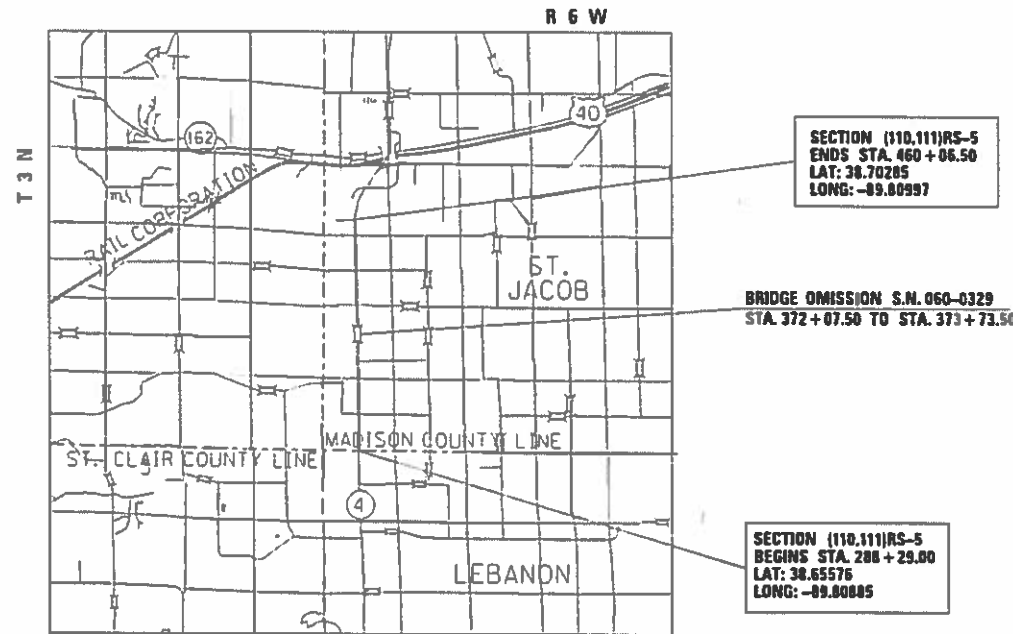
C-98-021-19

DESIGN DESIGNATION

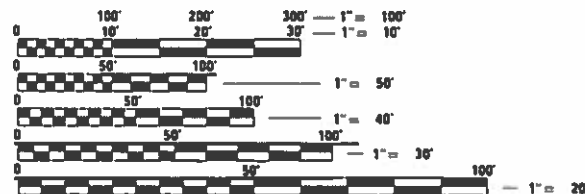
OTHER PRINCIPLE ARTERIAL

TRAFFIC DATA

2015 ADT = 6000
2019 ADT = 6100
2028 ADT = 6500
SU = 13.3%
MU = 13.3%



LOCATION MAP
(NOT TO SCALE)



FULL SIZE PLANS HAVE BEEN PREPARED USING STANDARD ENGINEERING SCALES. REDUCED SIZED PLANS WILL NOT CONFORM TO STANDARD SCALES. IN MAKING MEASUREMENTS ON REDUCED PLANS, THE ABOVE SCALES MAY BE USED.

J.U.L.I.E.
JOINT UTILITY LOCATION INFORMATION FOR EXCAVATION
1-800-992-0123
OR 811

PROJECT ENGINEER HERVE GELIN (618) 346-3179
PROJECT MANAGER ALVAN NIEVES-ROSARIO (618) 346-3145

CONTRACT NO. 76M13

GROSS LENGTH = 17,232 FT. = 3.25 MILE
NET LENGTH = 17,067 FT. = 3.23 MILE

STATE OF ILLINOIS
DEPARTMENT OF TRANSPORTATION

SUBMITTED Jan 18, 20 19
Kyle Klatka
REGIONAL ENGINEER

March 22, 20 19
A. E. K.
ENGINEER OF DESIGN AND ENVIRONMENT

March 22, 20 19
Paul P. Ch...
DIRECTOR OF HIGHWAYS PROJECT IMPLEMENTATION

PRINTED BY THE AUTHORITY
OF THE STATE OF ILLINOIS

INDEX OF SHEETS

1. COVER SHEET
2. INDEX OF SHEETS, HIGHWAY STANDARDS, GENERAL NOTES, COMMITMENTS
3. SUMMARY OF QUANTITIES
4. TYPICALS
5. SCHEDULES OF QUANTITIES
6. LOCATION MAP AND RESURFACING DETAILS

LIST OF ILLINOIS DOT HIGHWAY STANDARDS

000001-07	STANDARD SYMBOLS, ABBREVIATIONS AND PATTERNS
001006	DECIMAL OF AN INCH AND OF A FOOT
701301-04	LANE CLOSURE, 2L, 2W, SHORT TIME OPERATIONS
701306-04	LANE CLOSURE, 2L, 2W, SLOW MOVING OPERATIONS DAY ONLY, FOR SPEEDS ≥ 45 MPH
701901-08	TRAFFIC CONTROL DEVICES
780001-05	TYPICAL PAVEMENT MARKINGS
781001-04	TYPICAL APPLICATIONS RAISED REFLECTIVE PAVEMENT MARKERS

4. THE PROPOSED PAVEMENT MARKINGS SHALL MATCH THE LOCATIONS OF THE EXISTING PAVEMENT MARKINGS, AS DIRECTED BY THE ENGINEER.
5. ALL AREAS DISTURBED FOR ANY REASON SHALL BE PERMANENTLY SEEDED AS DIRECTED BY THE ENGINEER. ALL AREAS DISTURBED BY THE CONTRACTOR OUTSIDE THE PROPOSED CONSTRUCTION LIMITS SHALL BE SEEDED AT THE CONTRACTOR'S EXPENSE.
6. THE AGGREGATES FOR THE MICRO-SURFACING SHALL MEET THE FRICTION AGGREGATE REQUIREMENTS FOR MIXTURE "D" IN ARTICLE 1004.03 (A)
7. ALL SHORT TERM PAVEMENT MARKING AND TEMPORARY PAVEMENT MARKING SHALL BE REMOVABLE TAPE.
8. ONE CHANGEABLE MESSAGE SIGN SHALL BE PLACED IN EACH DIRECTION APPROXIMATELY TWO WEEKS PRIOR TO CONSTRUCTION. THE LOCATIONS OF THE SIGNS SHALL BE AS DIRECTED BY THE ENGINEER.
9. THE VOID IN THE PAVEMENT WHICH RESULTS FROM THE RAISED REFLECTIVE PAVEMENT MARKER REMOVAL SHALL BE REPAIRED WITH MATERIAL AS DIRECTED BY THE ENGINEER. THE MATERIAL AND WORK SHALL BE PAID FOR IN ACCORDANCE WITH ARTICLE 783 OF THE STANDARD SPECIFICATIONS.

COMMITMENTS

NONE

GENERAL NOTES

1. ILLINOIS STATE LAW REQUIRES A 48-HOUR NOTICE TO BE GIVEN TO ALL UTILITIES WITHIN THE PROJECT AREA BEFORE DIGGING. FIELD MARKING OF FACILITIES MAY BE OBTAINED BY CONTACTING J.U.L.I.E. OR FOR NON-MEMBERS, THE UTILITY COMPANY DIRECTLY. AGENCIES KNOWN TO HAVE FACILITIES WITHIN THE PROJECT AREA ARE AS FOLLOWS:

	AERIAL	BURIED
*ENABLE MIDSTREAM PARTNERS		X
*HOME TELEPHONE PARTNERS	X	X
*NATURAL GAS PIPELINE COMPANY OF AMERICA		X
*SOUTHWESTERN ELECTRIC COOP. INC.	X	X
*CHARTER COMMUNICATIONS, INC. (CABLE TV)	X	X
*TRI-TOWNSHIP WATER DISTRICT		X

MEMBERS OF J.U.L.I.E. CALL TOLL FREE (800) 892-0123 OR 811 AND ARE INDICATED BY *. NON-J.U.L.I.E. MEMBERS MUST BE NOTIFIED INDIVIDUALLY.

2. THE CONTRACTOR AND THE ENGINEER SHALL BE AWARE THAT NO SURVEY WAS PERFORMED FOR THIS PROJECT. THE STATIONING, TOPOGRAPHY, AND QUANTITIES SHOWN IN THE PLANS WERE CREATED USING MICROFILM AND FIELD MEASUREMENTS. ALL SHALL BE ASSUMED TO BE APPROXIMATE. THE CONTRACTOR SHALL VERIFY DIMENSIONS AND CONDITIONS IN THE FIELD PRIOR TO CONSTRUCTION AND ORDERING OF MATERIALS.

3. THE ILLINOIS DEPARTMENT OF TRANSPORTATION STRONGLY ENCOURAGES THE PRIME CONTRACTOR AND THEIR APPROVED SUB-CONTRACTORS TO HIRE MINORITY, WOMEN AND DISADVANTAGED INDIVIDUALS FROM ITS FEDERALLY FUNDED HIGHWAY CONSTRUCTION CAREERS TRAINING PROGRAM (HCCTP) TO HELP MEET WORKFORCE AND TRAINEE GOALS. THIS PROGRAM IS TRAINING MINORITIES, WOMEN AND DISADVANTAGED INDIVIDUALS IN HIGHWAY CONSTRUCTION-RELATED SKILLS, E.G., MATH FOR THE TRADES, JOB READINESS, TECHNICAL SKILLS COURSEWORK (CARPENTRY, CONCRETE FLATWORK, BLUEPRINT READING, SITE PLANS, SITE WORK, TOOLS USE, ETC.) AND OSHA 10 HOUR CERTIFICATION, TO PREPARE THEM FOR A CAREER IN THE HIGHWAY CONSTRUCTION TRADES. GRADUATES ARE WELL-TRAINED AND READY TO BECOME PRODUCTIVE ENTRY-LEVEL CONSTRUCTION WORKERS. PLEASE CONTACT THE DISTRICT 8 EEO OFFICE AT 618-346-3360 AND/OR THE HCCTP COORDINATOR AT 618-874-6528 TO LEARN MORE ABOUT THE PROGRAM AND FOR ASSISTANCE IN MEETING WORKFORCE AND TRAINEE GOALS.

MIXTURE REQUIREMENTS

ROUTE	FAP 314 (IL 4)
SECTION	(110,111)RS-5
COUNTY	MADISON
CONTRACT	76M13

DESCRIPTION	SINGLE PASS MICRO-SURFACING ON IL 4 FROM BLUE SPRUCE LANE TO ST. CLAIR COUNTY LINE
-------------	------------------------------------------------------------------------------------

ADT (CONSTRUCTION YR.):	6000
MU%	6
SU%	6
20 YR. ESAL'S	2.42

MIXTURE USE	MICRO-SURFACING
AC/PG	
RAP % (MAX)	
DESIGN AIR VOIDS	
MIX COMPOSITION (Gradation)	
FRICTION AGG	MIXTURE "D"
QUALITY MGMT PROGRAM	

Plan quantities for Bituminous Concrete Surface Course items are calculated using a unit weight of 112 lb/sq yd/in (59.8 kg/sq m/25mm)

**STATE OF ILLINOIS
DEPARTMENT OF TRANSPORTATION**

**INDEX OF SHEETS, HIGHWAY STANDARDS, GENERAL NOTES,
AND COMMITMENTS**

SCALE: SHEET 1 OF 1 SHEETS STA. TO STA.

F.A.P. RTE.	SECTION	COUNTY	TOTAL SHEETS	SHEET NO.
314	(110,111)RS-5	MADISON	6	2
CONTRACT NO. 76M13				
ILLINOIS			FED. AID PROJECT	

CODE NO.	ITEM	UNIT	TOTAL QUANTITY	CONSTR. CODE	
				ROADWAY	RURAL
				80% FED 20% STATE	
40400001	FIBER-MODIFIED ASPHALT CRACK SEALING	FOOT	17500		17500
40400050	MICRO-SURFACING RUT FILLING	FOOT	70		70
40400121	MICRO-SURFACING, SINGLE PASS, MIXTURE D	SQ YD	49202		49202
40600290	BITUMINOUS MATERIALS (TACK COAT)	POUND	11070		11070
67100100	MOBILIZATION	L SUM	1		1
70100460	TRAFFIC CONTROL AND PROTECTION, STANDARD 701306	L SUM	1		1
70107025	CHANGEABLE MESSAGE SIGN	CAL DA	28		28
70300100	SHORT TERM PAVEMENT MARKING	FOOT	3418		3418
70300150	SHORT TERM PAVEMENT MARKING REMOVAL	SQ FT	1139		1139
* 78000200	THERMOPLASTIC PAVEMENT MARKING - LINE 4"	FOOT	50713		50713
* 78100100	RAISED REFLECTIVE PAVEMENT MARKER	EACH	213		213
78300200	RAISED REFLECTIVE PAVEMENT MARKER REMOVAL	EACH	213		213
X0327979	PAVEMENT MARKING REMOVAL - GRINDING	SQ FT	16904		16904

* SPECIALTY ITEM

MODEL: Default
 FILE: \\nas01c.pva\ill08a\EBID\NTEC\Illinois.gov\PIWDOT\Documents\DOT_Offices\Director\B:\projects\0876M13\CADD\sta\CAD\cherec\0876M13-stc-cy\pba\cdp

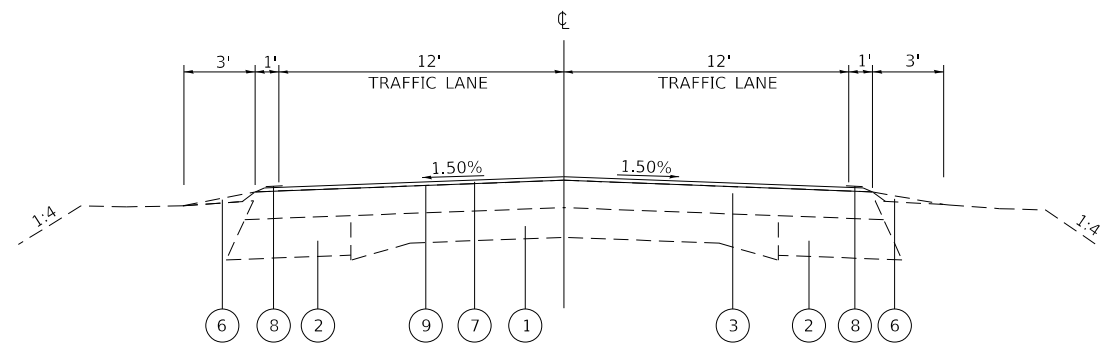
USER NAME = DintelmanJN	DESIGNED -	REVISED -
PLOT SCALE = 100.0000' / in.	DRAWN -	REVISED -
PLOT DATE = 1/31/2019	CHECKED -	REVISED -
	DATE -	REVISED -

**STATE OF ILLINOIS
DEPARTMENT OF TRANSPORTATION**

SUMMARY OF QUANTITIES

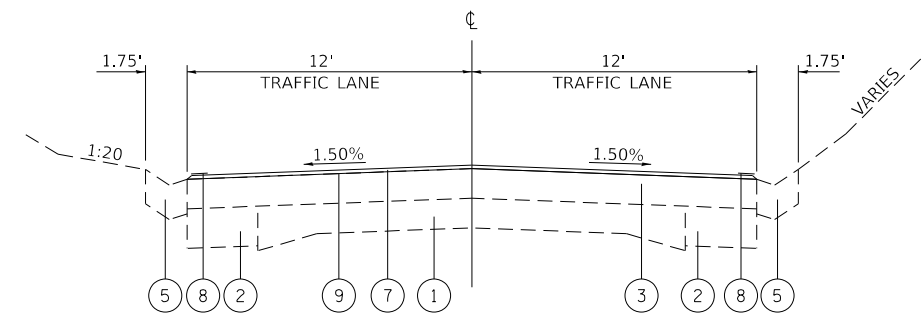
SCALE: SHEET 1 OF 1 SHEETS STA. TO STA.

F.A.P. RTE.	SECTION	COUNTY	TOTAL SHEETS	SHEET NO.
314	(110,111)RS-5	MADISON	6	3
CONTRACT NO. 76M13			ILLINOIS FED. AID PROJECT	



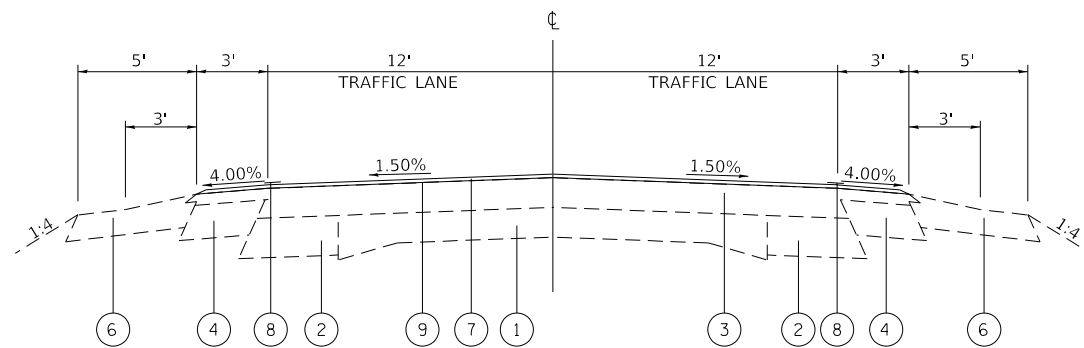
PROPOSED TYPICAL SECTION

STA 302+50 TO STA 310+35
 STA 319+25 TO STA 367+56.50
 STA 377+07.50 TO STA 415+00.00



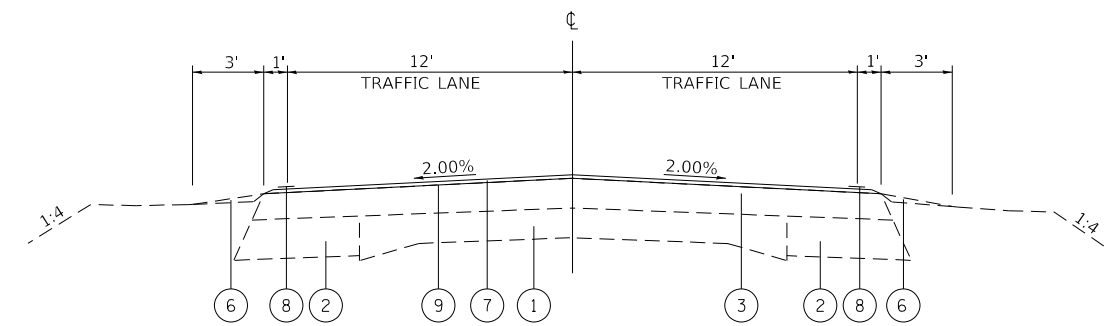
PROPOSED TYPICAL SECTION

STA 288+89 TO STA 302+50
 STA 310+35 TO STA 319+25



PROPOSED TYPICAL SECTION

STA 367+56.50 TO STA 372+07.50
 STA 373+73.50 TO STA 377+07.50
 BRIDGE OMISSION: STA 372+07.50 TO STA 373+73.50



PROPOSED TYPICAL SECTION

STA 415+00 TO STA 460+06.50

LEGEND

- ① EXISTING PCC PAVEMENT 9-6-9
- ② EXISTING BASE COURSE WIDENING 8"
- ③ EXISTING HMA RESURFACING ± 6"
- ④ EXISTING HMA SHOULDER
- ⑤ EXISTING CONCRETE CURB & GUTTER
- ⑥ EXISTING AGGREGATE SHOULDER
- ⑦ PROPOSED MICRO-SURFACING, SINGLE PASS, TYPE II, MIXTURE D
- ⑧ PROPOSED THERMOPLASTIC PAVEMENT MARKING
- ⑨ PROPOSED BITUMINOUS MATERIALS (TACK COAT)

MODEL: Default
 FILE: \\nrcs-pis\ill08\EBID\NTEC\Illinois\gov\PIV\DOT\Documents\DOT Office\Director\B\Projects\0876M13\CADD\staCAD\chres\0876M13-stc-typlcal.dgn

USER NAME = DintelmanJN	DESIGNED -	REVISED -
	DRAWN -	REVISED -
PLOT SCALE = 100.0000' / in.	CHECKED -	REVISED -
PLOT DATE = 1/31/2019	DATE -	REVISED -

**STATE OF ILLINOIS
 DEPARTMENT OF TRANSPORTATION**

TYPICAL SECTIONS

SCALE: SHEET 1 OF 1 SHEETS STA. TO STA.

F.A.P. RTE.	SECTION	COUNTY	TOTAL SHEETS	SHEET NO.
314	(110,111)RS-5	MADISON	6	4
			CONTRACT NO. 76M13	
		ILLINOIS	FED. AID PROJECT	

RESURFACING SCHEDULE				
LOCATION		BITUMINOUS MATERIALS (TACK COAT)	MICRO-SURFACING, SINGLE PASS, TYPE II, MIXTURE D	
		(POUND)	(SQ YD)	
STA.	TO	STA.		
288+29.00	TO	302+50.00	852.60	3789.33
302+50.00	TO	310+35.00	510.25	2267.78
310+35.00	TO	319+25.00	534.00	2373.33
319+25.00	TO	367+56.00	3140.15	13956.22
367+56.00	TO	372+08.00	339.00	1506.67
372+08.00	TO	377+08.00	300.00	1333.33
377+08.00	TO	415+00.00	2464.80	10954.67
415+00.00	TO	460+07.00	2929.55	13020.22
TOTAL			11070	49202

PAVEMENT MARKING SCHEDULE											
LOCATION		LENGTH	THERMOPLASTIC PAVEMENT MARKING 4"			RAISED REFLECTIVE PAVEMENT MARKER REMOVAL	RAISED REFLECTIVE PAVEMENT MARKERS	SHORT TERM PAVEMENT MARKING	SHORT TERM PAVEMENT MARKING REMOVAL	PAVEMENT MARKING REMOVAL - GRINDING	
STA.	TO		SOLID WHITE EDGE LINE	SKIP-DASH YELLOW	SOLID YELLOW LINE	EACH	EACH	FOOT	SQ FT	SQ FT	
288+29	TO	294+08	NO PASSING RT	579	1158	145	579	7	7	116	39
294+08	TO	300+72	NO PASSING LT RT	664	1328		1328	8	8	134	45
300+72	TO	320+45	NO PASSING LT	1973	3946	493	1973	25	25	396	132
320+45	TO	340+82	SKIP DASH	2037	4074	509		25	25	408	136
340+82	TO	351+30	NO PASSING RT	1048	2096	262	1048	13	13	210	70
351+30	TO	360+82	NO PASSING LT RT	952	1904		1904	12	12	192	64
360+82	TO	372+08	NO PASSING LT	1126	2252	282	1126	14	14	226	75
372+08	TO	385+00	SKIP DASH	1127	2254	282		14	14	226	75
385+00	TO	391+75	NO PASSING RT	675	1350	169	675	8	8	136	45
391+75	TO	396+85	SKIP DASH	510	1020	128		6	6	102	34
396+85	TO	403+04	NO PASSING LT	619	1238	155	619	8	8	124	41
403+04	TO	425+45	SKIP DASH	2241	4482	560		28	28	450	150
425+45	TO	433+32	NO PASSING RT	787	1574	197	7+87	10	10	158	53
433+32	TO	435+89	SKIP DASH	257	514	64		3	3	52	17
435+89	TO	442+38	NO PASSING LT RT	649	1298		1298	8	8	130	43
442+38	TO	443+45	NO PASSING LT	107	214	27	107	1	1	22	7
443+45	TO	450+28	NO PASSING RT	683	1366	171	683	9	9	138	46
450+28	TO	452+74	SKIP DASH	246	492	62		3	3	50	17
452+74	TO	458+21	NO PASSING LT	547	1094	137	547	7	7	110	37
458+21	TO	460+07	NO PASSING LT RT	186	372		372	2	2	38	13
SUB-TOTAL				17013	34026	3641	13046	213	213	3418	1139
TOTAL						50713		213	213	3418	1139

RUT FILLING SCHEDULE			
LOCATION	LENGTH	WIDTH	MICRO-SURFACING RUT FILLING
STATION			FOOT
393+90	70	6	70
GRAND TOTAL			70

CRACK SEALING SCHEDULE				
LOCATION			FIBER-MODIFIED ASPHALT CRACK SEALING (FOOT)	
STA.	TO	STA.		
288+29	TO	460+07	17500	
TOTAL			17500*	

* CRACK SEALING QUANTITY TO BE USED PRIMARILY ALONG THE LONGITUDINAL CENTER LINE JOINT. TRANSVERSE CRACKING TO BE DETERMINED BY THE ENGINEER.

MODEL: Default
FILE: \\nrc\p\1108\EBID\NTEC\Illinois\gov\PIV\DOT\Documents\DOT Office\Director\B\Projects\0876M13\CADD\staCAD\chere\0876M13-shc-tp\cal.dgn

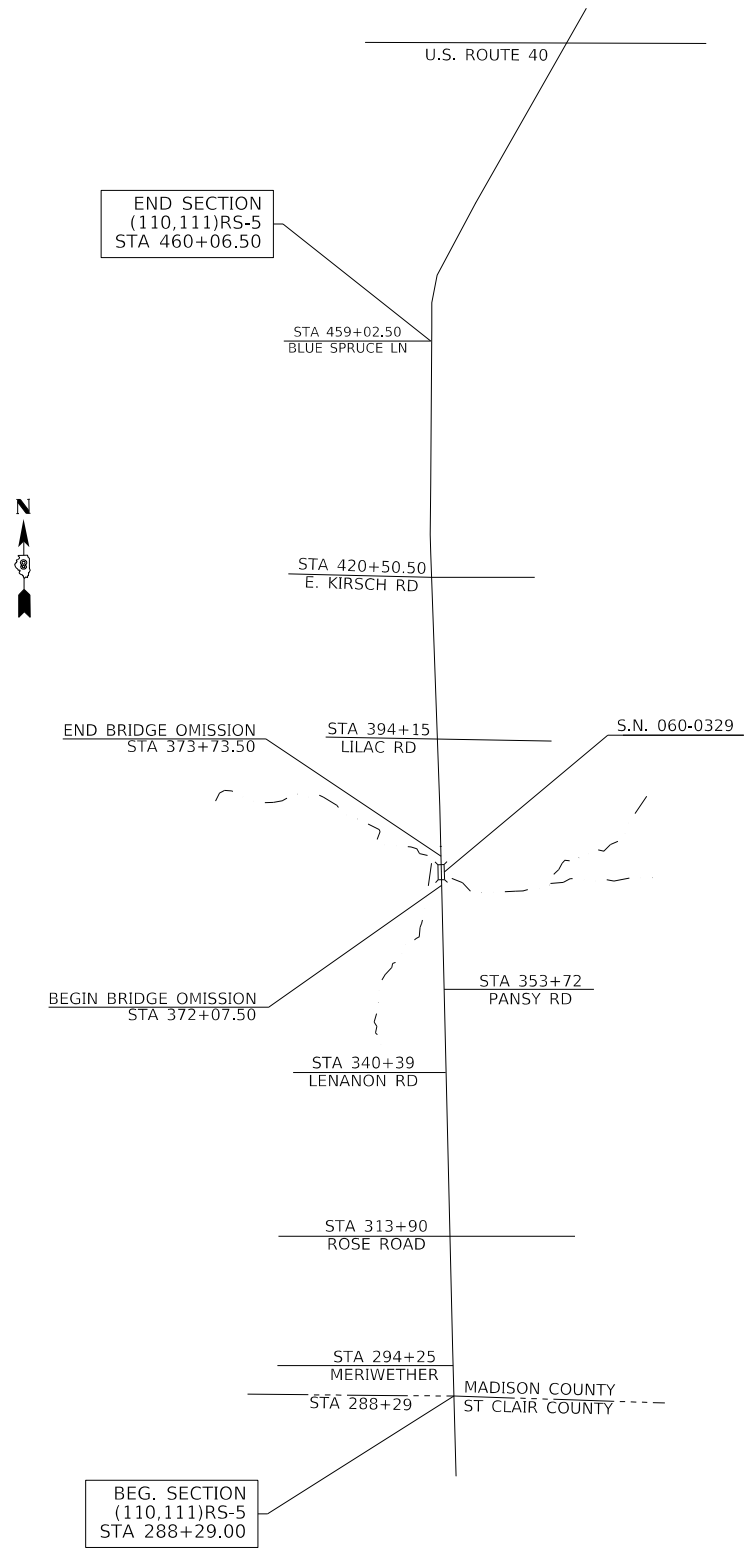
USER NAME = DintelmanJN	DESIGNED -	REVISED -
	DRAWN -	REVISED -
PLOT SCALE = 100.0000' / in.	CHECKED -	REVISED -
PLOT DATE = 1/31/2019	DATE -	REVISED -

STATE OF ILLINOIS
DEPARTMENT OF TRANSPORTATION

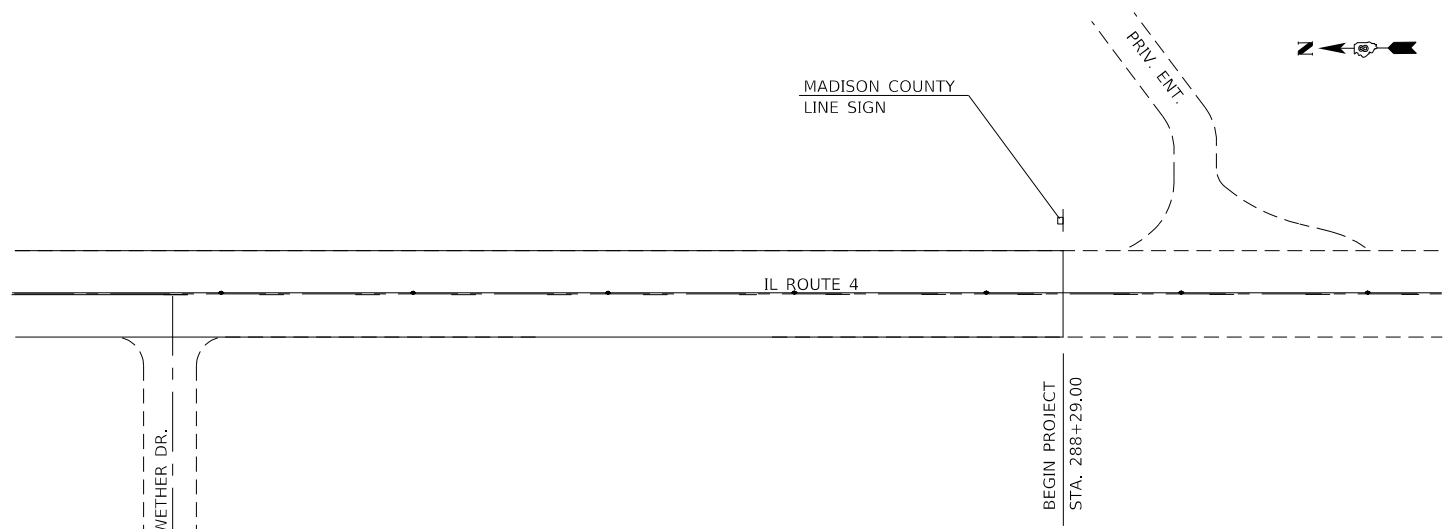
SCHEDULE OF QUANTITIES

SCALE: SHEET 1 OF 1 SHEETS STA. TO STA.

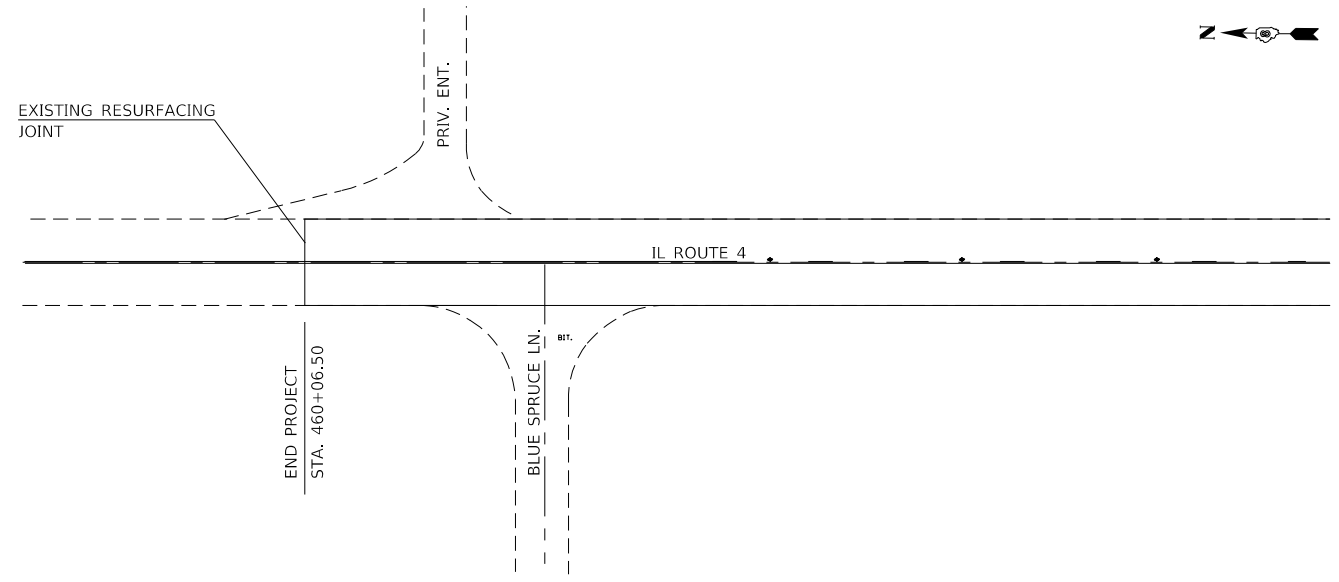
F.A.P. RTE.	SECTION	COUNTY	TOTAL SHEETS	SHEET NO.
314	(110,111)RS-5	MADISON	6	5
ILLINOIS FED. AID PROJECT			CONTRACT NO. 76M13	



LOCATION MAP



PROJECT BEGIN DETAIL



PROJECT END DETAIL

MODEL: Default
 FILE: \\nashc-pix1\IL08\EBID\NTEG\Illinois.gov\PIWD\DOT\Documents\1\DOT_Offices\DI\refct 8\Projects\0876M13\CADD\0876M13\CADD\0876M13-chn-csp\loc.dgn

USER NAME = DintelmanJN	DESIGNED -	REVISED -
	DRAWN -	REVISED -
PLOT SCALE = 100,0000' / in.	CHECKED -	REVISED -
PLOT DATE = 1/31/2019	DATE -	REVISED -

STATE OF ILLINOIS
DEPARTMENT OF TRANSPORTATION

LOCATION MAP, RESURFACING DETAILS

SCALE: SHEET 1 OF 1 SHEETS STA. TO STA.

F.A.P. RTE.	SECTION	COUNTY	TOTAL SHEETS	SHEET NO.
314	(110,111)RS-5	MADISON	6	6
CONTRACT NO. 76M13			ILLINOIS FED. AID PROJECT	